

District

FINAL ISSUE of TableTALK— See President's Message on page 2 for details

see
NLM
Regional
on
p. 3

New article added p. 20

TABLE

Tidbits

Game
Analyses

Locating
Games

Keeping
Winners



NLM REGIONAL

Alert! Special opportunity
to mine for **Gold points** this
fall if you are a Non-Life Master with
fewer than 750 masterpoints! From
September 28-30, Williamsburg, VA
hosts a D6 **GOLD RUSH**
REGIONAL!

WWW

District 6 TableTALK

EDITORIAL BOARD

Bill Cole, PUBLISHER
Donna Rogall, CREATIVE DIRECTOR, EDITOR
Lucy McCoy, MANAGING EDITOR
Steve Robinson, EMAIL MANAGER

CONTRIBUTING EDITORS:
Barbara Doran, Margot Hennings

COLUMNISTS:
Steve Robinson, Alan Schwartz, Shawn Stringer

DISTRICT SIX OFFICERS

ACBL District 6 Director:
Margot Hennings

Margot1Obridge@cox.net
President: Shawn Stringer
shstringer@aol.com

Vice President: Jane Farthing
jane.farthing@gmail.com

Secretary: Susan B. MacLaughlin
sbmak121@comcast.net

Treasurer: Ron Spieker
tip001@verizon.net

UNIT PRESIDENTS

Unit 109: Richmond: Barry Fratkin
fratco@mac.com

Unit 110: Peninsula: Karen Crowley
karen.thorne.crowley@gmail.com

Unit 135: Maryland: Lynn Jones
bridgelynn@comcast.net

Unit 139: Piedmont: David Butler
dbutler934@aol.com

Unit 146: VA State: Brian Boyce
brian@bfboyce.com

Unit 147: Wash. DC: Linda Marshall
ldajmarshall@msn.com

Unit 218: Northern Va: Marty Bley
nvbapresident2017to2019@gmail.com

Unit 231: SW Virginia: Rich Rio
richrio428@yahoo.com

*Send comments or inquiries to Lucy McCoy,
Managing Editor at lucymccoy@verizon.net*

DISTRICT **6** **Table**

PRESIDENT'S MESSAGE —*Shawn Stringer, shstringer@aol.com*

My term as President of District 6 ends on September 1, so my final letter provides the chance to look back over the last three years and see the changes that have occurred here in District 6 and also across much of bridge in this country. We have so many hardworking people in D6 and I appreciate them all - Tournament Chairs who work so hard to put on wonderful regionals; Bill Cole and his Grass Roots Committee members, who do such fine job running our GNT and NAP events which remain some of the largest and well organized in the country; our rock solid Treasurer, Ron Spieker, who has steadfastly overseen our finances; Lucy McCoy, our Tournament Coordinator, who has the unenviable job of scheduling events in a very crowded calendar with ever moving pieces; Don Berman for his work on the D6 website, particularly after our server crashed last year; the corps of volunteers too numerous to mention, whose efforts are critical to all of our events. I am especially grateful for the friendship and support of Margot Hennings who has served as a valuable sounding board and reliable interface with ACBL during some tumultuous times, allowing me to focus solely on our district.

The D6 Board, including all of the individual Unit Presidents, has fully supported my vision of inventorying, cleaning and upgrading our equipment. We have worked thousands of hours in these endeavors. Every D6 bid box has been run through my dishwasher. We have stripped off and replaced worn out felt from over 1200 metal boards, and repainted numbers and vulnerability – and still

...continued on p. 6, column 1

TO GET ON AN EMAIL LIST FOR **BRIDGE NEWS & BRIDGE PROBLEMS**, SEND A NOTE REQUESTING SUCH TO STEVE ROBINSON AT ROBINSWR@EROLS.COM



idbids

page

District 6 President's Message . . . inside cover Shawn Stringer	
D7 Regional: Charlotte, NC Oct 22-28	4
D7 Regional: N Charleston, SC Dec 27-Jan 2	5
District 6 STaCs: Aug 20-26 (Balt U135 & D4), Nov 12-18 & Dec 10-16	10
2018-19 North American Pairs—Club Qualification Begins	17
New article: D6 Youth on Expedition from Williamsburg to Atlanta Youth NABC & New Goodwill Members . . .	20
1-Year District 6 Calendar of Events . .	21



Ace Analyses

page

High Percentage Bridge Sometimes Do Nothing . . 7 by Alan Schwartz	
Robinson's Rules On Competing 8 by Steve Robinson	



Locating Games

D6 REGIONALS	page
Hunt Valley, MD Aug 13-19	2
Williamsburg, VA NLM Sep 28-30	3
SECTIONALS	
Virginia Beach, VA NLM Aug 25-26	6
Fairfax, VA Sep 6-9	7
Norfolk/Va Beach, VA Sep 14-16	8
Pikesville, MD NLM Sep 15-16	9
Williamsburg, VA Sep 28-30	10
Silver Spring, MD Oct 11-14	11
Richmond, VA Oct 12-14	12
D7 Abingdon, VA Oct 12-14	13
Fairfax, VA Oct 25-28	13
Richmond, VA NLM Nov 10	14
Charlottesville, VA Dec 7-9	15
Silver Spring, MD Jan 3-6	16
Richmond, VA Jan 11-13	17
Norfolk/Va Beach, VA Jan 25-27	18
Halethorpe, MD Feb 1-3	19



Keeping Winners

Reston, VA	page
D6 Regional Winners . .	14
District 6 Grand National Teams Winners back cover	

KO'S WITH NATURAL BRACKETS OF FEWER THAN 9 TEAMS MAY BE PLAYED IN ROUND ROBIN FORMAT AS PART OF ACBL TRIAL - DETAILS ON DISTRICT 6 WEBSITE

MONDAY, AUGUST 13

Kickoff KO 1:30 & 7:30
CONTINUES 10:30 & 3 TUESDAY
Open Pairs 1500/3000/3000+ . . . 1:30 & 7:30
Racehorse **Gold Rush** Pairs . . . 1:30 & 7:30
Fox Hunt Side Series (1st, 2nd of 4) 1:30 / 7:30
I/N Pairs 5/20/50 & 100/300/500 1:30 / 7:30
Charity Swiss Teams 7:30
AFTERNOON GAMES BENEFIT ACBL ED. FOUNDATION
EVENING GAMES BENEFIT LOCAL CHARITY

TUESDAY, AUGUST 14

0-5 MP PLAYERS **FREE** TODAY
Terrapin KO 10:30 & 3
CONTINUES 10:30 & 3 WEDNESDAY
Open Pairs 1500/3000/3000+ . . . 10:30 & 3
Steeplechase **Gold Rush** Pairs . . . 10:30 & 3
Fox Hunt Side Series (3rd, 4th of 4) 10:30 / 3
I/N Pairs 10:30 / 3 / 7:30
Stratified Swiss Teams 3
Evening Side Fast Pairs Series (1st of 4) 7:30
ZIP Swiss Teams 7:30

WEDNESDAY, AUGUST 15

Maryland KO 10:30 & 3
CONTINUES 10:30 & 3 THURSDAY
A/X Pairs 0-5000/5000+ 10:30 & 3
Mid-flight Pairs 0-1500/3000 . . . 10:30 & 3
Pimlico **Gold Rush** Pairs 10:30 & 3
Hunt Valley Side Series (1st, 2nd of 4) 10:30 / 3
I/N Pairs 10:30 / 3 / 7:30
Stratified Swiss Teams 3
Evening Side Fast Pairs Series (2nd of 4) 7:30
ZIP Swiss Teams 7:30

THURSDAY, AUGUST 16

Open Swiss 0-5000/5000+ 10:30 & 3
Mid-flight Swiss 0-1500/3000 . . . 10:30 & 3
Gold Rush Swiss 0-300/750 . . . 10:30 & 3
I/N Pairs 10:30 / 3 / 7:30
Hunt Valley Side Series (3rd, 4th of 4) 10:30 / 3
Evening Side Fast Pairs Series (3rd of 4) 7:30

FRIDAY, AUGUST 17

Hunt Cup KO 10:30 & 3
CONTINUES 10:30 & 3 SATURDAY
A/X Pairs 0-5000/5000+ 10:30 & 3
Mid-flight Pairs 0-1500/3000 . . . 10:30 & 3
Thoroughbred **Gold Rush** Pairs 10:30 & 3


HUNT VALLEY INN

Delta Hotel by Marriott

245 SHAWAN ROAD, HUNT VALLEY, MARYLAND 21031

Picturesque Countryside and the



FRIDAY, continued...

Orioles Side Series (1st, 2nd of 6) 10:30 / 3
I/N Pairs 10:30 / 3 / 7:30
Stratified Swiss Teams 3
Evening Side Fast Pairs Series (4th of 4) 7:30
ZIP Swiss Teams 7:30

SATURDAY, AUGUST 18

Open Pairs 1500/3000/3000+ . . . 10:30 & 3
Finish Line **Gold Rush** Pairs . . . 10:30 & 3
Orioles Side Series (3rd, 4th of 6) 10:30 / 3
I/N Pairs 10:30 / 3 / 7:30
3-Session Saturday KO . . . 11:30 & 3 & 7:30
*FEWER BOARDS & SHORTER SESSIONS
- DETAILS ON DISTRICT 6 WEBSITE*

Stratified Swiss Teams 3
ZIP Swiss Teams 7:30

SUNDAY, AUGUST 19

SEVEN 7-BOARD MATCHES WITH SHORT LUNCH BREAK
A/X/Y Swiss 4000/6000/6000+ . . . 10 & TBA
Bracketed B Teams 0-3000 10 & TBA
8 TEAMS PER BRACKET; 3 IN EACH BRACKET WIN GOLD
Orioles Side Series (5th, 6th of 6) . . . 10 / 2

• ALL KNOCKOUT (KO) EVENTS ARE BRACKETED, RANDOM DRAW & INCLUDE 0-300 PLAYERS; ONE- & TWO-BRACKET KOs ARE HANDICAPPED; NO PLAYBACKS BELOW TOP BRACKET IF POSSIBLE • STRATS DETERMINED BY MP AVERAGES, BUT NO PLAYER MAY EXCEED EVENT LIMIT; I/N EVENTS STRATIFIED BASED ON ATTENDANCE • ZIP SWISS (AKA TRIPLE NICKEL) IS 5 ROUNDS OF 5 BOARDS AND 5 MINUTES PER BOARD

The Hunt Valley Inn is once again a Marriott property! Call 888-236-2427 or 410-785-7000 by July 12 & mention "BRIDGE" for the \$119 rate

- Fitness center • Pools
- Free WiFi • Free parking on hotel property

—All New Schedule—

- Two-session events morning and afternoon
- Special three-session KO on Saturday
- New KO formats aim to keep teams in brackets competing against their peers

♣ **Expert Speakers**

Tuesday through Saturday

♦ **FAMOUS Panel Show**

Friday at 2pm

♥ **Renowned I/N program**

♠ **Hunt Valley Hospitality**

♣ **Six days of GOLD RUSH**

Tournament Chairs

Mary Jo Chiesa
quigs8448@aol.com
410-353-7953

Stuart Diener
stuardiener@gmail.com
443-465-6733

Partnerships

Tim Kuhn, 410-987-0096
tkuhn@adellplas.com

- OPEN EVENTS & SIDE SERIES STRATIFIED 0-750/750-3000/3000+, UNLESS NOTED
- **GOLD RUSH PAIRS (0-300/300-750)** AWARD GOLD POINTS TO OVERALL WINNERS & 0-750 SECTION TOPS; RED POINTS TO 0-300 STRAT • **ACBL MEMBER NUMBER REQUIRED TO PLAY**—ONE-MONTH AND ANNUAL MEMBERSHIPS EASILY AVAILABLE IN ADVANCE AND ONSITE.

www.districtsixbridge.org FOR MORE INFORMATION

Charm of Baltimore



GOLD RUSH!



Come Mine for Gold!!!!

Sponsored by District 6
—and Hosted by Unit 110—

NON-LIFE MASTER GOLD RUSH REGIONAL

DOUBLE TREE BY HILTON:

50 Kingsmill Rd., Williamsburg, VA • 757-220-2500

No player may have more than 750 masterpoints. Life Masters are ineligible.

FRIDAY, September 28

Gold Rush Pairs.....	10:00 & 2:30	Two-Session Event
Stratified Side Pairs [#]	10:00 / 2:30	Single Sessions
49er Pairs (0-5/5-20/20-49) Pairs.....	10:00	Single Session

SATURDAY, September 29

Gold Rush Pairs.....	10:00 & 2:30	Two Sessions
Stratified Side Pairs [#]	10:00 / 2:30	Single Sessions
49er Pairs (0-5/5-20/20-49) Pairs.....	10:00	Single Session

SUNDAY, September 30

Gold Rush Swiss Teams.....	10:00 & TBA	Two-Session Event
199er Stratified Swiss Teams.....	10:00 / 2:30	Single Sessions

Stratifications are based on average MP holdings—but no player may have more than 750 MPs. LMs are ineligible. Strats may change based on attendance.

Gold Rush Pairs/Teams: A = 300 – 750 NLM; B = 100 – 300; C = 0 – 100

Masterpoint Awards

Gold Rush Winners & Section Tops: 1/3 Gold, 2/3 Red
[#]Side Pairs Overall & Section Tops: 1/3 Gold, 2/3 Red
 (To win Gold, must play at least two single sessions)
 49er Pairs award Red points

NLM Regional Event Entry Fees: \$12 — ACBL Member number is required*

* Temporary one-month \$7.99 membership or Permanent membership with annual fee of \$49 may be purchased at the Volunteer Membership Desk near the entry sales desk. Inactive members will be charged an extra \$4 fee per session; inactive members with 0 - 20 MPs or who are ABA members are excluded from this fee.

Hosted by Unit 110, this NLM Gold Rush Regional is being held concurrently with the Unit 110 Sectional. See p.18 for full Sectional/Silver Point schedule.

Tournament Features

- ♣ Renowned Williamsburg hospitality—free snacks, coffee & soft drinks!
Free Sunday Lunch!
- ♦ Guest speakers at 9:15 each morning with handouts!
- ♥ Registration gifts, prize drawings, Section Tops, D6 Regional Free Plays for Overall wins!

visit District 6 at:
districtsixbridge.org

Hotel Information

Special \$101.00 Hotel Rate Reserve by August 28, 2018

Call **1-800-222-8733**

& Use Bridge Rate code "BRI"

OR

Send an email to Jane Farthing at jane.farthing@gmail.com who will send you a link to a unique website for booking your hotel room for this tournament.

Tournament Chair

Jane Farthing
jane.farthing@gmail.com
703-850-9635

Partnership Chair

Dianne Morton
mortondi@aol.com
757-258-3088

CHARLOTTE, NC ♦ OCTOBER 22-28, 2018

HILTON CHARLOTTE UNIVERSITY PLACE

704-547-7444 • 8629 J M KEYNES DRIVE

Room rate **\$104** • Deadline: **Sept. 22**

Deposit of one night required at booking, will be forfeited for cancellation after Sept. 22.

Booking code on Hilton.com: BRIDGE



Charlotte Halloween Regional

Conveniently located off I-85 North on Harris Blvd. East at University Place.

Nearby attractions:

- (Lots of Shopping, Dining, Entertainment)
- Concord Mills Shopping Mall
- Charlotte Motor Speedway
- The Shoppes at University Place
- UNC at Charlotte
- NASCAR Hall of Fame

Four Bracketed knockouts, Two Compact Knockouts, Four Two-session Swiss Team Events ... Excellent Intermediate/Newcomer Program with expert lectures daily ... Eight GOLD RUSH events in six days for 0-750 MP players ... Famous Mid-Atlantic Hospitality

...Racing for Gold in the NASCAR City!

MONDAY, OCT. 22

- Witches Bracketed Knockout ... 1:00 & 7:00
Continues 1:00 & 7:00 Tuesday
- Open Pairs (1500/3000/3000+) ... 1:00 & 7:00
- GOLD RUSH** Pairs ... 1:00 & 7:00
- Panthers Side Series (1st, 2nd of 4) ... 1:00 / 7:00
- Non-LM 49er & 499er Pairs ... 1:00 / 7:00
- Stratified Swiss Teams ... 7:00
Aft. pair games benefit ACBL Ed. Foundation
Eve. pair games benefit Loaves and Fishes

TUESDAY, OCT. 23 0-5 MP players play free today

- Tues-Wed Compact Knockout ... 9:00
Continues 9:00 Wednesday
- Lake Norman Side Series (1st of 5) ... 9:00
- Sunrise 49er & 499er Pairs ... 9:00
- Goblins Bracketed Knockout ... 1:00 & 7:00
Continues 1:00 & 7:00 Wednesday
- A/X Pairs ... 1:00 & 7:00
- Mid-Flight Pairs (0-3000) ... 1:00 & 7:00
- GOLD RUSH** Pairs (0-750) ... 1:00 & 7:00
- Panthers Side Series (3rd, 4th of 4) ... 1:00 / 7:00
- Non-LM 49er & 499er Pairs ... 1:00 / 7:00
- Stratified Board-a-Match Teams ... 7:00

Tournament Co-chairs

Arnold Hoffmann, 980-254-7476
ajhoffmann@carolina.rr.com

Marilyn Goodrich, 980-322-4684
mgoodrich@goodrich-hendry.com
charlottenregional@gmail.com

Partnerships

Alice Gray, 704-947-8942,
alicegray44@hotmail.com

JoAnn Massey, 704-880-4553,
joannmassey7@gmail.com

- STRATS DETERMINED BY MP AVERAGES, BUT NO PLAYER MAY EXCEED EVENT'S LIMIT.
- ALL KOs ARE BRACKETED, RANDOM DRAW WITH NO PLAYBACKS UNTIL UNAVOIDABLE. ONE- AND TWO-BRACKET KOs ARE HANDICAPPED.
- BRACKETED TEAMS TYPICALLY ARE ROUND ROBINS WITHIN GROUPS OF 7

WEDNESDAY, OCT. 24

- Wed-Thu Open Swiss (1500/3000/3000+) ... 9:00
- Wed-Thu **GOLD RUSH** Swiss Teams ... 9:00
Wed-Thu Swisses continue at 9:00 Thursday
- Lake Norman Side Series (2nd of 5) ... 9:00
- Sunrise NLM 49er & 499er Pairs ... 9:00
- Ghosts Bracketed Knockout ... 1:00 & 7:00
Continues 1:00 & 7:00 Thursday

- A/X Pairs ... 1:00 & 7:00
- Mid-Flight Pairs (0-3000) ... 1:00 & 7:00
- GOLD RUSH** Pairs (0-750) ... 1:00 & 7:00
- Hornets Side Series (1st, 2nd of 4) ... 1:00 / 7:00
- Non-LM 49er & 499er Pairs ... 1:00 / 7:00
- Stratified Swiss Teams ... 7:00

THURSDAY, OCT. 25

- Thur-Fri Compact Knockout ... 9:00
Continues 9:00 Friday
- Lake Norman Side Series (3rd of 5) ... 9:00
- Sunrise NLM 49er & 499er Pairs ... 9:00
- A/X Swiss Teams ... 1:00 & 7:00
- Mid-flight Swiss Teams (0-3000) ... 1:00 & 7:00
- GOLD RUSH** Swiss Teams ... 1:00 & 7:00
- Stratified Open Pairs ... 1:00 & 7:00
- Hornets Side Series (3rd, 4th of 4) ... 1:00 / 7:00
- Non-LM 49er & 499er Pairs ... 1:00 / 7:00
- Stratified Swiss Teams ... 7:00



OR 8 TEAMS, WITH THE TOP AND/OR BOTTOM BRACKETS PLAYED AS SWISS.

- OPEN EVENTS, INCLUDING SIDE SERIES, ARE STRATIFIED 0-750, 750-3000, 3000+ UNLESS OTHERWISE NOTED
- A/X STRATS: 5000/5000+
- MID-FLIGHT: 1500/3000 (NO PLAYER OVER 3000)

FRIDAY, OCT. 26 - GOODWILL DAY

- Fri-Sat Open Swiss (1500/3000/3000+) ... 9:00
- Fri-Sat **GOLD RUSH** Swiss Teams ... 9:00
Fri-Sat Swisses continue at 9:00 Saturday
- Lake Norman Side Series (4th of 5) ... 9:00
- Sunrise NLM 49er & 499er Pairs ... 9:00
- Zombies Bracketed Knockout ... 1:00 & 7:00
Continues 1:00 & 7:00 Saturday

- A/X Pairs ... 1:00 & 7:00
- Mid-Flight Pairs (0-3000) ... 1:00 & 7:00
- GOLD RUSH** Pairs (0-750) ... 1:00 & 7:00
- Knights Side Series (1st, 2nd of 5) ... 1:00 / 7:00
- Non-LM 49er & 499er Pairs ... 1:00 / 7:00
- Stratified Swiss Teams ... 7:00

SATURDAY, OCT. 27

- Lake Norman Side Series (5th of 5) ... 9:00
- Sunrise NLM 49er & 499er Pairs ... 9:00
- Bracketed Swiss Teams ... 1:00 & 7:00
- Open Pairs (1500/3000/3000+) 1:00 & 7:00
- GOLD RUSH** Pairs ... 1:00 & 7:00
- Knights Side Series (3rd, 4th of 4) ... 1:00 / 7:00



SUNDAY, OCT. 28

- A/X/Y Swiss Teams ... 10:00 & TBA
- Bracketed Flight B Teams (0-3000) ... 10:00 & TBA

- **GOLD RUSH STRATS: 300/750 (GOLD POINTS FOR 750 STRAT OVERALLS AND SECTION TOPS)**
- **NON-LIFE MASTER 49ER & 499ER GAMES STRATIFIED AT DIRECTOR'S DISCRETION**
- **SINGLE-SESSION PAIRS ALWAYS ACCOMMODATED**

FOR MORE INFORMATION: WWW.DISTRICT7BRIDGE.ORG

How to Dance the Charleston: Start with your feet together. Step back with your right foot. Kick back with your left foot. Step forward with your left foot to original position. Kick forward with your right foot. Repeat. Return to step 1 where you step back with your right foot.

CHARLESTON, SC MID-ATLANTIC REGIONAL

CHARLESTON'S NEW YEAR'S REGIONAL

DO THE CHARLESTON!

DO THE CHARLESTON!

STRATS DETERMINED BY MP AVERAGES, BUT NO PLAYER MAY EXCEED THE EVENT'S LIMIT

THURSDAY, DEC. 27

Rainbow Row Bracketed Knockout 1:00 & 7:00
Continues 1:00 & 7:00 Friday

Stratified Open Pairs 1:00 & 7:00
GOLD RUSH Pairs 1:00 & 7:00
Porgy & Bess Side Series (1st, 2nd of 4) 1:00 / 7:00
NLM 49er & 499er Pairs 1:00 / 7:00
Board-a-Match Teams 7:00
499er Swiss Teams 7:00

Aft pair games benefit ACBL Ed. Foundation
Eve games benefit Charleston Humane Society

FRIDAY, DEC. 28 - GOODWILL DAY

0-5 MP players play free today

Seabrook Island Compact Knockout 9:00
Continues 9:00 Saturday
Middleton Gardens Side Series (1st of 5) 9:00
Morning NLM 49er & 499er Pairs 9:00
Folly Beach Bracketed Swiss Teams ... 1:00 & 7:00
A/X Pairs 1:00 & 7:00
Mid-Flight Pairs (0-3000) 1:00 & 7:00
GOLD RUSH Pairs (0-750) 1:00 & 7:00
Porgy & Bess Side Series
(3rd, 4th of 4) 1:00 / 7:00
NLM 49er & 499er Pairs ... 1:00 / 7:00
Strati-flighted Swiss Teams 7:00
499er Swiss Teams 7:00

Embassy Suites Hotel & Convention Center

5055 International Blvd., North Charleston • (843) 747-1882

\$104/night (Code: MAB): suite with microwave, refrigerator, two cooked-to-order breakfasts each morning, & evening reception.

Free parking for bridge players (staying on site or not)

For reservations, one night deposit charged 30 days prior to tournament, cancelling within 14 days results in forfeiture of the deposit.

Nearby hotels with a similar rate for bridge players:

- **Hilton Garden Inn**, 5265 International Blvd. (843) 308-9330
- **Hyatt Place**, 3234 West Montague Ave. (843) 302-8600
- **Residence Inn**, 5035 International Blvd. (843) 266-3434

SATURDAY, DEC. 29

Two-session Open Swiss Teams 9:00
Two-session **GOLD RUSH** Swiss Teams 9:00
Two-session Swisses continue 9:00 Sun
Middleton Gardens Side Series (2nd of 5) 9:00
Morning NLM 49er & 499er Pairs 9:00
Do the Charleston Bracketed KO 1:00 & 7:00
Continues 1:00 & 7:00 Sunday

A/X Pairs 1:00 & 7:00
Mid-Flight Pairs (0-3000) 1:00 & 7:00
GOLD RUSH Pairs (0-750) 1:00 & 7:00
Citadel Side Series (1st, 2nd of 4) 1:00 / 7:00
NLM 49er & 499er Pairs 1:00 / 7:00
Board-a-Match Teams 7:00
499er Swiss Teams 7:00

SUNDAY, DEC. 30

Hunley Compact Knockout 9:00
Continues 9:00 Monday
Middleton Gardens Side Series (3rd of 5) 9:00
Morning NLM 49er & 499er Pairs 9:00
Open Swiss (Open/6000/4000) .. 1:00 & 7:00
Bracketed Flight B Teams
(0-3000) 1:00 & 7:00
At least 3 teams in each bracket win gold
Open Pairs
(1500/3000/3000+) .. 1:00 & 7:00
Citadel Side Series
(3rd, 4th of 4) 1:00 / 7:00
NLM 49er & 499er Pairs 1:00 / 7:00
Open Swiss Teams 7:00

• ALL KOs BRACKETED, RANDOM DRAW—NO PLAYBACKS UNTIL UNAVOIDABLE. 1- & 2-BRACKET KOs HANDICAPPED. TOP BRACKET MAY HAVE < 9 TEAMS & RUN AS A 2-SESSION ROUND ROBIN QUALIFYING 4 TEAMS TO THE KO STAGE • BRACKETED TEAMS TYPICALLY ROUND ROBINS WITHIN GROUPS OF 7 OR 9 TEAMS, WITH THE TOP &/OR BOTTOM BRACKETS RUN AS SWISS • ALL OPEN EVENTS, INCLUDING SIDE SERIES, STRATIFIED 0-750, 750-3000, 3000+ UNLESS OTHERWISE NOTED • A/X: 5000/5000+ • MID-FLIGHT: 1500/3000 (NO PLAYER OVER 3000) • GOLD RUSH: 300/750 (GOLD PTS FOR 750 STRAT OVERALLS & SECTION TOPS) • NLM 49ER & 499ER STRATIFIED AT DIRECTOR'S DISCRETION.

MONDAY, DEC. 31

Note 7:30 start for Mon evening

Spanish Moss Open Swiss Teams 9:00
Spanish Moss **GOLD RUSH** Swiss Teams 9:00
Spanish Moss Swisses continue 9:00 Tues
Middleton Gardens Side Series (4th of 5) 9:00
Morning NLM 49er & 499er Pairs 9:00
Pluff Mud Bracketed Knockout 1:00 & 7:30
Continues 1:00 & 7:00 Tuesday

A/X Pairs 1:00 & 7:30
Mid-Flight Pairs (0-3000) 1:00 & 7:30
GOLD RUSH Pairs (0-750) 1:00 & 7:30
Gullah Side Series (1st, 2nd of 6) 1:00 / 7:30
NLM 49er & 499er Pairs 1:00 / 7:30
Board-a-Match Teams 7:30

* NEW YEAR'S EVE PARTY *

Bring in the new year with a DJ spinning classic disco and beach music, cash bar, party favors, and breakfast

TUESDAY, JAN. 1

Open Swiss Teams 9:00
Middleton Gardens Side Series (5th of 5) 9:00
Morning NLM 49er & 499er Pairs 9:00
Open Pairs 1:00 & 7:00
Bracketed Swiss Teams 1:00 & 7:00
GOLD RUSH Pairs (0-750) 1:00 & 7:00
Gullah Side Series (3rd, 4th of 6) 1:00 / 7:00
Open Swiss Teams 7:00

WEDNESDAY, JAN. 2

Open Swiss Teams 10:00 & TBA
GOLD RUSH Swiss Teams 10:00 & TBA
Gullah Side Series (5th, 6th of 6) 10:00 / 2:00



WIN YOUR FINAL GOLD POINTS OF '18 AND FIRST OF '19!

Tournament Co-Chairs:

Steve Donaldson

folliboy@aol.com, (843) 412-8097

Ray Benton

raybenton44@gmail.com, (843) 209-1471

Partnerships: Eldon Clayman

brdgbums@gmail.com, (828) 439-1283

- Prizes for section tops and overall winners
- Hospitality in the Presidential suite Fri, Sat, Sun and Tues after the evening session
- Excellent Intermediate/Novice program with expert lectures
- Barbara Seagram, well-known bridge author and speaker, will give an Intermediate/Newcomer seminar from 10-noon, Thursday, Dec 27. \$10 in advance, \$20 at the door. Contact Steve Donaldson for reservations.

ON THE WEB: DISTRICT7BRIDGE.ORG

The arms also play an important role in dancing the Charleston. Try holding your arms straight out from your body and bending them at your elbows hands pointing up. Swing your arms from the elbow, to the right and then to the left. Combine this movement with the kickstep. You are dancing the Charleston.

Hosted by ♦ DEC 27, 2018-JAN 2, 2019 ♥ District 7 ♣

Norfolk/ Virginia Beach

2018 Non-Life Master Sectional



UNIT 146 BRIDGE CENTER

4966 Euclid Road
Virginia Beach, VA 23462

Directions: Take North Witchduck exit off I-264. After 4/10 mile, turn right onto Cleveland Street. After 3/10 mile, turn diagonally right onto Euclid Road. The Bridge Center is at 4966 Euclid Road, 3/10 mile on the left, in the U-shaped Pocahontas Office Park.

Nearby Hotels:

Hampton Inn, 5793 Greenwich Road, Virginia Beach, 757-490-9800
Motel 6, 4760 Euclid Road, Virginia Beach, 757-499-1935

Play for **SILVER POINTS!!!**

Saturday, August 25 (Lecture/Workshop between sessions; Lunch served)

Stratified Pairs (0-50, 50-200, 200-NLM up to 500)10:30 AM
Stratified Pairs (0-50, 50-200, 200-NLM up to 500)2:30 PM

Sunday, August 26 (Lunch served)

Stratified Swiss Teams (0-100, 100-200, 200-NLM up to 500)10:30 AM
(Play-through with 1/2 hour break for meal)

—Stratification based on partnership/team average may be adjusted at director's discretion, based on attendance.—

Tournament Chair:

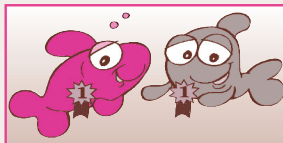
Kathleen Haglich, 757-467-4136, kathyvsh@gmail.com

Partnership Chair:

Brian Boyce, 757-412-4925, brian@bfboyce.com

Entries: \$10 per person per pairs session;
\$84 per team (Includes meal between sessions for 4 team members)
Additional \$4 for unpaid ACBL members

Great Hospitality: Includes free snacks, sodas and coffee for all events; plus a meal between sessions both days.



President's Message, continued from inside front cover

have another 1000 to be done. We have replaced board cases that dated from WWII. We are still trying to find new tables that will fit into our playing sites and that effort will continue. We have searched for years for 30-inch tables but most manufacturers now produce only 34-inch or larger. We constantly search for playing sites that will fit our space requirements and appeal to our players.

This will be the final issue of *TableTALK* after 16 years of publication. We have surveyed D6 members and learned that the vast majority no longer needed a printed publication as more and more players get event information from websites. All tournament information and flyers, plus results, will continue to be available through ACBL, D6 and Unit websites. Thanks to Donna Rogall for her work in producing the magazine, Bill Cole, who served as publisher and occasional contributor these many years, and Lucy McCoy, Managing Editor, as well as our regular columnists—Steve Robinson, Ron Kral, Alan Schwartz, Vince Wilmot, and the other contributors whose articles have improved the games of many bridge players.

In September, District 6 will be in the capable hands of Jane Farthing, who has twice chaired the Williamsburg Regional plus Unit 110 sectionals. I support Jane fully and trust that the players in District 6 will continue to step up to make our organization and our events strong.

Shawn Stringer,
D6 President



High Percentage Bridge

by ALAN SCHWARTZ
thndrstm@yahoo.com

Sometimes Do Nothing

Vul: E-W
Dealer: East

North

- ♠ Q8
- ♥ QT54
- ♦ J763
- ♣ Q93

West

- ♠ AKJ542
- ♥ 76
- ♦ T2
- ♣ J42

East	South	West	North
P	1♥	1♠	2♥
P	4♥	P	P
P			

At unfavorable vulnerability in a team game, as West, you decide not to stick your neck out with a 2♠ bid because even if you escape going for a number, you will only help the opponents play the hand.

You are on lead to 4♥. You cash the ♠AK, and Pard plays the ♠T, ♠6 playing Upside Down Count and Attitude. What do you do at trick three?

continued on pg. 16, column 3

♠ Fairfax, VA ♣ SEPTEMBER 6-9, 2018 ♦



NORTHERN VIRGINIA BRIDGE ASSOCIATION SEPTEMBER SENSATIONS SECTIONAL TOURNAMENT

The Arlington/Fairfax Elks Lodge #2188
703-560-2188 • 8421 Arlington Boulevard, Fairfax, VA

THURSDAY, SEPTEMBER 6

OPEN (2000+/2000/750) or 500/300/100 PAIRS10:30 a.m.
Kevin's Game: K of C Hall (KOCH), 5115 Little Falls Rd., Arlington, VA, 703-524-4788
*Evening games at: NVBA: *Beth El Hebrew Congregation* 3830 Seminary Rd, Alexandria, VA, and*
WBL: Obr Kodesh Congregation, 8300 Meadowbrook Ln, Chevy Chase, MD **NVBA (Beth El) WBL**
 Intermediate/Newcomer Lecture:6:30 p.m. 7:00 p.m.
 A/X (4000+/4000) or B/C/D (2500/1500/750) PAIRS:7:00 p.m. 7:30 p.m.
 NVBA 199ER (200/100/50) PAIRS; WBL 499ER (500/300/100) PAIRS:7:00 p.m. 7:30 p.m.
 NEWCOMER (0-20) PAIRS:7:00 p.m. 7:30 p.m.

FRIDAY, SEPTEMBER 7

Gene's Friday Morning Game at KOCH:9:30 a.m.
 OPEN (2000+/2000/750) or 499ER (500/300/100) PAIRS (NLMs only)
...REST OF TOURNAMENT AT ELKS LODGE...
 Intermediate/Newcomer Lecture:1:15 p.m.
 A/X (4000+/4000) or B/C/D (2500/1500/750) PAIRS:2 p.m.
 499ER (500/300/100) or 49ER (50/20/10) PAIRS:2 p.m.
 TRIPLE NICKEL SWISS—5 rounds, 5 boards, 5 minutes a board:7:30 p.m.
 499ER (500/300/100) PAIRS:7:30 p.m.

SATURDAY, SEPTEMBER 8

****ALL events on Sat. morning & afternoon award REGIONALLY RATED SILVER POINTS—an additional \$1 will be added to your entry fee to support Grass Roots events in our local area!****
 A/X PAIRS (4000+/4000)10:30 a.m. & 3 p.m.
2-session Play-thru event (single-session entries accommodated for 10:30 only)
 B/C/D (2500/1500/750), 499ER (500/300/100) or 49ER (50/20/10) PAIRS 10:30 a.m.
 Intermediate/Newcomer Lecture:2:15 p.m.
 A/B/C (2500+/2500/750) or 499ER (500/300/100) PAIRS:3 p.m.

SUNDAY, SEPTEMBER 9

A/X (6000+/6000) SWISS TEAMS10:30 a.m. & TBA
 BRACKETED B TEAMS (no single player >3000)10:30 a.m. & TBA
B Teams Bracketed by Total Team Masterpoints: three overall places in each.
A/X Swiss & B Teams: 2-session events, a brief break & food available on-site.
 499ER (500/300/100) SWISS TEAMS10:30 a.m. / 2:30 p.m.
 49ER (50/20) SWISS TEAMS10:30 a.m.

SINGLE SESSION EVENTS are indicated by a slash (/) separating the start times.

STRATIFICATION of events is based on average masterpoints of the team or pair. In any event or flight with an upper limit, no individual's total Masterpoint holding may exceed that upper limit. Games under 500 MP limit will be stratified based on attendance and may vary.

DIRECTIONS: From Route 50/Arlington Boulevard heading west from Route 495/Beltway: Continue on/Take Route 50 West one mile outside the Beltway, & turn left at Javier Road (the second stoplight after the intersection of 50 and 495). Take an immediate right onto the access road; the Elks Lodge will be on your left—parking on the side & in the rear. From Fairfax, heading East on Route 50: Pass the intersection of Route 50 and Prosperity Avenue & turn right where you see the Elks Lodge #2188 sign.

Plenty of free parking! On-site snack bar plus lots of free treats! Many great restaurants nearby!

Players with 0-5 Masterpoints play FREE in ALL games!

Tournament Chair

Margot Hennings,
703-560-0245

Partnership Chair

Jay Simon
nvbapartnerships@gmail.com
571-789-8338 (C)

Mid-Chart Conventions permitted in all A/X Events

Next NVBA Sectional Oct 25-28 at Arlington/Fairfax Elks Lodge (Thurs at Beth El)

ACBL member number required to play—one-month and annual memberships easily available in advance and onsite.

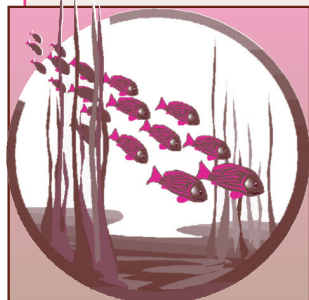
www.nvba.org

Norfolk/ Virginia Beach Fall Sectional

Unit 146 Bridge Center

4966 Euclid Road, Virginia Beach, VA 23462

—Stratification based on partnership/team average—



Directions: Take North Witchduck exit off I-264. After 4/10 mile, turn right onto Cleveland Street. After 3/10 mile, turn diagonally right on Euclid Road. The Bridge Center is at 4966 Euclid Road, 3/10 mile on the left, in the U-shaped Pocahontas Office Park.

Nearby Hotels: **Hampton Inn**, 5793 Greenwich Road, Virginia Beach, 757-490-9800
Motel 6, 4760 Euclid Road, Virginia Beach, 757-499-1935

Fri & Sat PM games regionally rated—extra points, no extra money.

Friday, September 14

(Light lunch served between sessions)

Stratified Pairs (single sessions) . . . 10:30 AM & 2:30 PM
(0-750, 750-1500, 1500+ MPs)

Novice Pairs (single sessions) . . 10:30 AM & 2:30 PM
(0-100, 100-200, 200-NLM up to 500)

Saturday, September 15

(Light lunch served between sessions)

Stratified Pairs (0-750, 750-1500, 1500+ MPs) 10:30 AM

Novice Pairs 10:30 AM
(0-100, 100-200, 200-NLM up to 500)

Bracketed Pairs/Board-A-Match Teams 2:30 PM

(Play in a stratified pairs game. At the same time, each pair is teamed according to MP (highest to lowest). *Two chances to win!*)

Sunday, September 16

Stratified Swiss Teams (0-750, 750-1500, 1500+ MPs) 10:30 AM & TBA

Novice Stratified Swiss Teams (0-100, 100-200, 200-NLM up to 500) . . 10:30 AM & TBA

Entries: \$10 per person per pairs session; \$84 per team (includes meal between sessions for 4 team members). Additional \$4 for unpaid ACBL members.

Great Hospitality: Includes free snacks, sodas and coffee for all events.

— Strata may be adjusted at director's discretion based on attendance—

Tournament & Partnership Chair

Brian Boyce

brian@bfboyce.com
757-434-0792

Hospitality Chairs

Mub-Sha Crawford

danmuhsha@cox.net
757-469-3329

Barbara Duer

bds02@sprynet.com
757-710-6578

Competing

Competing is defined as: If you pass, the auction could end. You don't have enough strength to make a game try. The parentheses around a bid in this article means that it's the opponents that are bidding. Take the auction: 1♥ – (1♠) – 2♥ – (2♠). In this auction the 1♥-bidder is the Opener. The 1♠-bidder is the Overcaller. The 2♥-bidder is the Responder and the 2♠-bidder is the Advancer. Since the spade bids have () around them, they are the opponents' bids. The assumption of competing is that if you have an eight-card fit, you are happy playing at the two-level and therefore your opponents should be unhappy and the opposite is true. If your opponents play all their eight-card fit part-scores at the two-level, you will not have a good score.

In the auction 1♥ – (1♠) – 2♥ – (2♠), Overcaller has at least five spades and Advancer has at least three spades. The opponents are at the two-level in at least an eight-card spade fit. If they over-called on a four-card suit or raised on only two, that's unlucky. When your opponents are in an eight-card fit at the two-level you don't figure to get a good score. It doesn't matter whether the



MARYLAND
BRIDGE
ASSOCIATION

Non Life Master Sectional

BRIDGE CLUB OF BALTIMORE

1319 Bedford Ave., Pikesville, MD 21208

Hospitality

Lunch & refreshments included!

Play for Silver!

*NLMs with fewer than **750** MPs*

Saturday, September 15

NLM StrataFlighted Pairs (750/200/100 & separate 50/20/10)10:30 am

NLM StrataFlighted Pairs (750/200/100 & separate 50/20/10)3:00 pm

Sunday, September 16

NLM StrataFlighted Pairs (750/200/100 & separate 50/20/10)12:30 pm

—All events are stratified by average masterpoints. Strata may be adjusted according to attendance.—

TOURNAMENT CHAIR:

Patricia Murty, 443-838-8309, 129firef@comcast.net

PARTNERSHIPS: **Jane Culver**, 410-461-2711, janeculver4@gmail.com

DIRECTIONS to the Bridge Club of Baltimore:

Baltimore Beltway to Reisterstown Road exit. Go south. Turn right on Old Court Road. Take the first left on Bedford Ave. Go one block. Turn into shopping center where Post Office is; the bridge club is to the far right.

game is matchpoints or IMPs. Therefore, when your opponents are in 2♠ and they have an eight-card fit, you should go out of your way to compete. Don't worry about strength. If it's a part-score hand, usually each side has around 20 HCPs. If Opener has six hearts he should bid 3♥. Bidding 3♥, which is a nine-card fit, will win more often than it will lose. 3♥ by Opener is not a game try. If Opener wants to make a game try over 2♠, there are four calls that he can make to invite game: 2NT, 3♣, 3♦ or 4♥ are all game tries. Responder should not bid 4♥ over Opener's 3♥-competitive bid. If Opener has only five hearts, he should usually pass since Responder will get another bid or Overcaller might keep bidding. Opener is in direct seat, and the opponents might bid further. If Opener has a prime hand (prime meaning short spades and good hearts), he could bid 3♥. If 2♠ gets passed back to Responder, he needs a very good excuse not to bid 3♥ and should always bid 3♥ if he has four hearts. Four + five = nine. Holding QJ of spades or queens and jacks is an excuse not to compete. If Responder has a good five-card or longer minor, he could bid three-of-the-minor giving Opener a choice of part-scores. If you let the opponents play in 2♠ in their eight-card fit, you are headed for a bad score; so, you have little to lose and lots to gain if you compete.

If you're the spade bidders, when should you bid again over 3♥? Your opponents are at the three-level in what could be an eight-card fit so you should usually bid again if you have nine spades between you. If you have six spades or your partner

Williamsburg Fall Sectional



DOUBLETREE BY HILTON: 50 Kingsmill Road • 757-220-2500

Special Hotel Rate of \$101.00 Ask for BRI rate

Friday, September 28

Stratified Pairs 10:00 am / 2:30 pm
(0-500, 500-1250, 1250+ MPs—Average points) (*single sessions*)

Saturday, September 29

Stratified Pairs (0-500, 500-1250, 1250+ MPs —Average points) 10:00 am
Bracketed Pairs/Board-A-Match Teams—*Two chances to win!* 2:30 pm
(0-500, 500-1250, 1250+) Stratified pairs game. At the same time, each pair is teamed according to masterpoints for a BAM.

Sunday, September 30

Stratified Swiss Teams (0-500, 500-1250, 1250+ MPs) 10:00 am & TBA
Two session event, \$100 per 4-person team—*Includes lunch!*

Entry Fees: \$10 for all sessions except Sunday. ACBL member number is required¹

¹Temporary one-month \$7.99 membership or Permanent membership with annual fee of \$49 may be purchased at the Volunteer Membership Desk near the entry sales desk. Inactive members will be charged an extra \$4 fee per session; inactive members with 0 - 20 MPs or who are ABA members are excluded from this fee.

Tournament Chair: **Jane Farthing**, jane.farthing@gmail.com, 703-850-9635

Partnership Chair: **Dianne Morton**, mortondi@aol.com, 757-258-3088

This sectional is held concurrently with a **NLM Gold Rush Regional**. (See p. 3 for details!) Two-thirds of the NLM Regional tables will count toward the Sectional tables for Masterpoint awards.

Featuring Williamsburg Hospitality!

Directions: I-64 to Rte. 199, exit 242 (Busch Gardens). Turn onto Rt. 60 East, turn right on Kingsmill Rd., the Doubletree is on the right.

has four spades, the one with the extra spade should compete to 3♠. It has been established that if you have a nine-card fit, competing at the three-level will be a winner in the long run. Number of HCPS should have nothing to do with your decision to compete.

Take the auction 1♠ – (2♦) – 2♠ – (3♦). The opponents are already at the three-level in 3♦. If you have a nine-card spade fit, you should compete to 3♠. If Opener bids 3♠ in this auction, he is not making a game try, he's competing. If Opener wants to make a game try he has three choices. 4♠ is an obvious game try. 3♥ and double are the other two game tries. If Opener wants to make a game try below 3♠ in this auction, he has to choose between double and 3♥. Opener doesn't have room to make a natural game try. He could have clubs or hearts or both to make a 3♥-game try. You can define what double means in

DISTRICT 6 STAC

(Sectional Tournament at Clubs)

Aug 20-26 (Balt U135 & D4), Nov 12-18 & Dec 10-16

- ♣ Win sectionally rated silver points at your favorite local clubs.
- ♣ Huge overall masterpoint awards; the more tables in play during any one session, the greater the awards.
- ♣ Clubs in MD, VA, and DE participate. Call any club for details, including entry fees and partnership arrangements.
- ♣ **District 6 STAC Coordinator:**
Don Berman
don.berman@verizon.net

your partnership. I like double to show diamond shortness, which allows Responder to pass with a diamond stack. If for some reason, you opened 1♠ with ♠ Axxxx ♥ Kxx ♦ x ♣ Kxx, you should bid 3♠. It's the sixth spade, which brings the spade total to nine that makes a difference, not the number of high-card points. However, if you have ♠ AQxxx ♥ Axx ♦ Qx ♣ Qxx, you should pass since you only have eight spades between you and your partner.

As Responder, who raised to 2♠, what are your options if 3♦ comes back to you? The auction has gone 1♠ – (2♦) – 2♠ – (3♦) – pass – (pass). If you have four spades, you have a nine-card fit and should bid 3♠. If you have only three spades, you probably should not compete to 3♠. If Opener bids 3♠ you should pass, no matter how strong you are. Opener is competing. He's only bidding 3♠ because he has six of them. The more points you have, the more likely it is that Opener will make 3♠.

The auctions 1♠ – (2♥) – 2♠ – (3♥) and 1♥ – (2♦) – 2♥ – (3♦) present a problem. How do you make a game try since there are no in-between bids available? You need to be able to bid three-of-your major when you hold six of them and have a nine-card fit. Therefore, double should be an artificial game try. It's called a maximal double.

Overcalling at the one-level can help you compete. I have gotten good results overcalling at the one-level any time I have a five-card suit and at least eight HCPs. Suit quality does not matter. ♠ Axx ♥ 65432 ♦ Axx ♣ xx is a 1♥ overcall. I very rarely get

WASHINGTONBRIDGELEAGUE.ORG

Mid-chart allowed in all events except I/N

♣ Silver Spring, MD ♦ OCTOBER 11-14, 2018 ♥



88th Annual D.C. CHAMPIONSHIPS

at the **MARGARET SCHWEINHAUT SENIOR CENTER**
1000 Forest Glen Rd, Silver Spring, MD **Friday-Sunday only**

THURSDAY, OCTOBER 11

- ♣ StrataFlighted A/X (unlim/2000) & B/C/D (1000/500/300) Pairs11:15 am
Rockville Duplicate Bridge Club, 301-503-3348 (Mark Lavine)
St. Mark Presbyterian Church, 10701 Old Georgetown Rd, N. Bethesda, MD
- ♦ StrataFlighted A/X (unlim/4000) & B/C/D (2500/1500/750) Pairs (*both sites*), Intermediate/Novice Pairs (500/300/100) (*Obr Kodesh*), Stratified 199er Pairs (200/100/50) (*Beth El*), & 0-20 Pairs (*both sites*)
Beth El Hebrew Congregation, 3830 Seminary Road, Alexandria7:00pm
Ohr Kodesh Congregation, 8300 Meadowbrook Ln., Chevy Chase7:30pm
I-495 to Connecticut Ave. S. 4th light left E-W Hwy 410. Left Meadowbrook Ln. 1st left Freyman Dr. Parking lot on left. No outside food allowed.

FRIDAY, OCTOBER 12

- ♣ *StrataFlighted A/X (unlim/4000) & B/C/D Pairs (2500/1500/750)(single sessions)11 am, 3 pm
- ♦ **Relaxed & Fun Stratified IMP Pairs/Teams** (unlim/2500/750) 7:30 pm
—**2 Chances to Win!**— This innovative game moves like a pair game & scores the better of your IMP pair & team game. Come as a team of 4 or as a pair & we'll find you teammates.
- ♠ Intermediate/Novice Pairs (500/300/100) & 49er Pairs (50/20/5)(single sessions) 11 am, 3 pm, 7:30 pm

—Lunch available for purchase—

SATURDAY, OCTOBER 13

Win upgraded (more) masterpoints today! (\$1 additional fee supports Grass Roots events.)

- ♣ *StrataFlighted A/X (unlim/4000) & B/C/D Pairs (2500/1500/750)(single sessions) ..11 am, 3:30 pm
- ♦ Intermediate/Novice Pairs (500/300/100) & 49er Pairs (50/20/5)(single sessions) ...11 am, 3:30 pm
- ♥ **Machlin Sportsmanship Award** Presentationbetween sessions

SUNDAY, OCTOBER 14

- ♠ **Eynon Trophy**  —Lunch available for purchase—
First awarded in 1931— Try to add your name to the famous names inscribed here!
Flights A/X (unlim/5000) Eynon Trophy Swiss Teams (*2 session playthrough w/break*) ...11 am & TBA
- ♣ Bracketed Flight B Teams (no single player >3000) (*2 session playthrough w/break*) ...11 am & TBA
B Teams Bracketed by total team masterpoints; three overall places in each.
- ♦ 500/300/100 Swiss Teams, VPs (single sessions)11 am, 3 pm
- ♣ **Lots of Intermediate & Novice Events w/ Silver Points! ♥ 0-5 MP play FREE! ♠**
Separate I/N events & strata as advertised as attendance allows. (Director's discretion.)

Hospitality includes snacks, drinks, & **Friday lunch & evening desserts.** Sat. & Sun. lunch available for purchase. **Tournament Chair: Brad Theurer**, 301-527-8819, batheurer256@gmail.com; **Partnerships: Barbara Doran**, 301-608-0347, barb.doran@verizon.net,

*StrataFlighted if attendance warrants—otherwise combined into Stratified Pairs (unlim/2500/750) Stratification by avg. masterpoints of the team or pair. No individual may exceed the event's upper limit.

Directions to the Margaret Schweinhaut Senior Center, 1000 Forest Glen Rd, Silver Spring, MD: I-495 to Georgia Avenue North (toward Wheaton). 1st light right on Forest Glen Rd. The Center is .7 mile on right.

Richmond Fall Sectional

—30% Bigger Playing Area—

—Plenty of Free Parking—

—Same Famous Richmond Hospitality—

ACCA Temple: 1712 Bellevue Avenue

Separate Friendly Bridge 0-300 games Fri. & Sat.

FRIDAY, OCTOBER 12 *Newcomer Lecture* . . .9:00 AM
RBA Friendly Bridge 0-300 game10:00 AM / 3:00 PM
Stratified Open Pairs (750/2000/2000+)10:00 AM
Stratified Open Pairs (750/2000/2000+)3:00 PM

SATURDAY, OCTOBER 13 *Newcomer Lecture* . .9:00 AM
RBA Friendly Bridge 0-300 game10:00 AM
Stratified Open Pairs (750/2000/2000+)10:00 AM
Bracketed Pairs/Board-a-Match Teams3:00 PM
A, B, and C play in sectional pairs game. At the same time, each pair is teamed according to MP (highest to lowest). Two chances to win!!

SUNDAY, OCTOBER 14—lunch provided
Free coffee, bagels and donuts at 9:30 AM

Bracketed Swiss Teams10:00 AM
Two brackets - Open and I/N bracket (no one player can have more than 500 points)

DIRECTIONS TO ACCA TEMPLE SHRINE, 1712 Bellevue Ave.:
From the West – take I-64 East to I-95 North. Take first exit (Exit 80 Hermitage/Lakeside). Stay straight on the ramp to the light. Turn left onto Hermitage Road. Go .2 of a mile and then turn right onto Bellevue Ave. Turn right into the parking lot. From the North – Take I-95 South to Exit 82 onto Route 301 towards Chamberlayne Ave. Go 1.4 miles and turn right onto Westwood Avenue. Go .9 miles and turn left onto Hermitage Road. Go .2 mile and turn right onto Bellevue. From the South – Take I-95 North. Merge with I-64 West and I-95 North. Stay on I-95 north towards Washington. Take Exit 80 (see above). From the East – Take I-64 West. Merge with I-95 N. Stay on I-95 north towards Washington and take Exit 80 (see above).



FAMOUS RICHMOND HOSPITALITY

Free coffee, snacks and soda available each session

TOURNAMENT CHAIRS

Barry & Winnie Fratkin
fratco@mac.com
804-741-6782 (H)
804-837-6782 (C)

PARTNERSHIP CHAIR

Anne Atwood
bsaintsd@aol.com,
804-357-1225

doubled and go for a number when I overcall so light. A 1♥ overcall lets partner know that you have five hearts. If the opponents land in 2♠ in an eight-card fit, partner can compete with 3♥. However, you need close to an opening bid to overcall at the two-level.

Minor opening bids are more complicated since you can open 1♣ with only three. In the auction 1♣ – (1♠) – 2♣ – (2♠), the opponents are at the two-level in an eight-card spade fit. If you have a seven-card club fit, you don't want to bid at the three-level. Therefore, it's up to Opener to bid 3♣ when he has four or more of them. He knows Responder has at least four clubs. When the opponents have an eight-card fit and are at the two-level, it's usually right to bid 3♣ even if you only have an eight-card club fit. Remember, the opponents are in an eight-card fit at the two-level, and therefore they are happy.

Sometimes you don't know what type of fit you and your partner have. In this case you should use the 'compete with shortness in their suit' rule. You hold ♠x ♥Kxxx ♦Axxxx ♣Jxx. The auction goes 1♣ – (1♠) – double – (2♠) – Pass – (Pass) to you. The opponents have an eight-card spade fit and they're at the two-level. I like 2NT in these type of auctions to say, "I don't know where we belong, you guess." 2NT having this meaning comes up a lot more often than 11 points and two spade stoppers. 2NT for takeout by any player helps you compete – especially when you don't know what your fit is.

If your opponents are at the two-level in an eight-card fit, they are smiling. It's your job to wipe that smile off their face.

**District 7 Sectional
Abingdon, VA
OCTOBER 12-14, 2018**

**SOUTHWEST VA HIGHER
EDUCATION CENTER**
One Partnership Circle
276-619-4300

Directions: From I-81 take Exit 14 towards Abingdon, go ¼ mile and turn right at stop light. After ½ mile the Higher Education Center will be at the bottom of the hill on your left.

Schedule:

FRIDAY - OCTOBER 12

Open Pairs and 299er Pairs
Single sessions: 1 pm & 7 pm

SATURDAY - OCTOBER 13

Open Pairs and 299er Pairs
Single sessions: 10 am & 2 pm
Finishes in time for Barter Theatre

SUNDAY - OCTOBER 14

Open Swiss Teams & 299er Swiss Teams (depending on attendance)
2 sessions: 10 am & tba

Tournament Chair

Auggie de Weerd, 619-886-5139
abingdonbridgeclub@yahoo.com

Partnership Chair

Gail Dalton, 423-341-0126
gbsdalton@gmail.com

Hospitality: Homemade goodies & snacks. Luncheon included each day.

Stratifications: Open: 0-750, 750-2500, 2500+ / 299'er: 0-50, 50-200, 200-300 (Stratification may change depending on attendance.)

*Fall
into
Fun!*

**NVBA FALL SECTIONAL
TOURNAMENT**

The Arlington/Fairfax Elks Lodge #2188
8421 Arlington Boulevard,
Fairfax, VA; 703-560-2188

THURSDAY, OCTOBER 25

OPEN (2000+/2000/750) PAIRS or 500/300/100 PAIRS10:30 a.m.

Kevin's Game: K of C Hall (KOCH), 5115 Little Falls Rd., Arlington, VA, 703-524-4788

*Evening games at: NVBA: *Beth El Hebrew Congregation* 3830 Seminary Rd, Alexandria, VA, and*

WBL: Ohr Kodesh Congregation, 8300 Meadowbrook Ln, Chevy Chase, MD NVBA (Beth El) WBL

Intermediate/Newcomer Lecture6:30 p.m. 7:00 p.m.

A/X (4000+/4000) or B/C/D (2500/1500/750) PAIRS7:00 p.m. 7:30 p.m.

NVBA 199ER (200/100/50) PAIRS; WBL 499ER (500/300/100) PAIRS7:00 p.m. 7:30 p.m.

NEWCOMER (0-20) PAIRS7:00 p.m. 7:30 p.m.

FRIDAY, OCTOBER 26

Gene's Friday Morning Game at KOCH:9:30 a.m.

OPEN (2000+/2000/750) or 499ER (500/300/100) PAIRS (NLMs only)

...REST OF TOURNAMENT AT ELKS LODGE...

Intermediate/Newcomer Lecture1:15 p.m.

A/X (4000+/4000) or B/C/D (2500/1500/750) PAIRS2 p.m.

499ER (500/300/100) or 49ER (50/20/10) PAIRS2 p.m.

TRIPLE NICKEL SWISS—5 rounds, 5 boards, 5 minutes a board7:30 p.m.

499ER (500/300/100) PAIRS7:30 p.m.

SATURDAY, OCTOBER 27

****ALL events on Sat. morning & afternoon award REGIONALLY RATED**

SILVER POINTS—an additional \$1 will be added to your entry fee to support Grass Roots events in our local area!**

A/X (4000+/4000) or B/C/D (2500/1500/750) PAIRS ..10:30 a.m. / 3 p.m.

499ER (500/300/100) or 49ER (50/20/10) PAIRS10:30 a.m. / 3 p.m.

Intermediate/Newcomer Lecture2:15 p.m.

SUNDAY, OCTOBER 28

A/X (6000+/6000) SWISS TEAMS10:30 a.m. & TBA

BRACKETED B TEAMS (no single player >3000)10:30 a.m. & TBA

B Teams Bracketed by Total Team Masterpoints: three overall places in each.

A/X Swiss & B Teams: 2-session events, a brief break & food available on-site.

499ER (500/300/100) SWISS TEAMS10:30 a.m. / 2:30 p.m.

49ER (50/20) SWISS TEAMS10:30 a.m.

SINGLE SESSION EVENTS are indicated by a slash (/) separating the start times.

STRATIFICATION of events is based on average masterpoints of the team or pair. In any event or flight with an upper limit, no individual's total Masterpoint holding may exceed that upper limit. Games under 500 MP limit will be stratified based on attendance and may vary.

DIRECTIONS: From Route 50/Arlington Boulevard heading west from Route 495/Beltway: Continue on/Take Route 50 West one mile outside the Beltway, & turn left at Javier Road (the second stoplight after the intersection of 50 and 495). Take an immediate right onto the access road; the Elks Lodge will be on your left—parking on the side & in the rear. From Fairfax, heading East on Route 50: Pass the intersection of Route 50 and Prosperity Avenue & turn right where you see the Elks Lodge #2188 sign.



Plenty of free parking! On-site snack bar plus lots of free treats! Many great restaurants nearby!

Players with 0-5 Masterpoints play **FREE** in ALL games!

Tournament Chair

Margot Hennings,
703-560-0245

Partnership Chair

Jay Simon
nvbapartnerships@gmail.com
571-789-8338 (C)

Mid-Chart Conventions permitted in all A/X Events

Next NVBA Sectional
Feb 21-24 at Arlington/
Fairfax Elks Lodge
(Thurs at Beth El)

ACBL member number required to play—one-month and annual memberships easily available in advance and onsite.

www.nvba.org



RICHMOND BRIDGE ASSOCIATION

Sponsors a

Non-Life Master Sectional

ACCA Temple

1712 Bellevue Ave., Richmond, VA

A Day Full of Opportunities
for Non-Life Masters
with Fewer than 500 MPs

SATURDAY, NOVEMBER 10

Expert Lecture10:00 A.M.
Stratified Open Pairs10:30 A.M.

Expert Lecture2:30 P.M.
Stratified Open Pairs3:00 P.M.

DIRECTIONS TO PLAYING SITE: From the West – take I-64 East to I-95 North. Take first exit (Exit 80 Hermitage/Lakeside). Stay straight on the ramp to the light. Turn left onto Hermitage Road. Go .2 of a mile and then turn right onto Bellevue Ave. Turn right into the parking lot. From the North – Take I-95 South to Exit 82 onto Route 301 towards Chamberlayne Ave. Go 1.4 miles and turn right onto Westwood Avenue. Go .9 miles and turn left onto Hermitage Road. Go .2 mile and turn right onto Bellevue. From the South – Take I-95 North. Merge with I-64 West and I-95 North. Stay on I-95 north towards Washington. Take Exit 80 (see above). From the East – Take I-64 West. Merge with I-95 N. Stay on I-95 north towards Washington and take Exit 80 (see above).

**FAMOUS RICHMOND
HOSPITALITY**
INCLUDES LUNCH!

ENTRY FEES

\$9.00* Per Session

NOTES: \$4 additional per session for unpaid ACBL members. *Grass Roots events with 40% more Silver Points.

STRATIFICATION

C = 0-50 MP; B = 50-200 MP; A = 200-500 MP (or at Director's discretion)

TOURNAMENT & PARTNERSHIP CHAIR

Ed Kinlaw

804-744-4870, or
mekinlaw@yahoo.com

Reston, VA

Regional Winners July 2-8, 2018

TOP POINT WINNERS

District 6 Players

- 1 125.82 Steve Robinson
- 2 100.53 Peter Boyd
- 3 90.31 Brad Theurer
- 4 85.93 Ai-Tai Lo
- 5 83.35 William Cole
- 6 71.53 Lyle Poe Jr
- 7 71.25 Frederick Allenspach
- 71.25 Janet Lee
- 9 70.63 Richard Wegman
- 10 69.70 Leo LaSota

District 6 Players <3000 MPs

- 1 71.25 Janet Lee
- 2 56.61 Kun He
- 3 55.81 Jerry Nolte
- 4 53.93 Jay Cherlow
- 5 53.48 Hongmo Wang
- 6 52.47 Albert Lauber
- 7 45.95 Mary Mudd
- 45.95 Barry Sparks
- 9 45.76 Barry Goulding
- 10 45.32 David Soukup
- 45.32 Hakan Berk

continued on pg. 15, column 1

Reston, VA
Regional Winners
July 2-8, 2018

TOP POINT WINNERS

...cont. from p. 14, column 3

District 6 Players <750 MPs

- 1 56.61 Kun He
- 2 53.48 Hongmo Wang
- 3 45.32 David Soukup
45.32 Hakan Berk
- 5 38.09 Gil Krawitz
- 6 36.05 David Goldfrank
- 7 29.44 Kathleen Haglich
- 8 28.81 Ivy Broder
- 9 27.65 Amy Brisson
- 10 27.30 Bernard Klein

District 6 Players <300 MPs

- 1 56.61 Kun He
- 2 36.05 David Goldfrank
- 3 28.81 Ivy Broder
- 4 27.30 Bernard Klein
- 5 25.73 Nooreen Razi
25.73 Syed Khan
- 7 20.14 Jerry Rosenthal
- 8 17.08 Jim Zhong
- 9 16.58 Linda Meade
- 10 15.17 Reina Lerner

♠ **Charlottesville, VA** ♣ **DECEMBER 7-9, 2018** ♦

Shenandoah Valley Winter Sectional



Comfort Inn Monticello

2097 Inn Dr, Charlottesville, VA 22911

Reservations: 434-977-3300

Directions *From I-64 Eastbound:* Exit 124 (Shadwell): Make a right at the light and take an immediate left by the island. Follow the paved driveway to the top of the hill.

From I-64 Westbound: Make a left at the light, pass the overpass and make a left at the island. Follow the paved driveway to the top of the hill.

From Route 29: Take the ramp to 250 East Bypass, drive 5 miles on 250 East Bypass, pass the overpass of I-64, stay on the 250 East Bypass and make a left at the island. Follow the paved driveway to the top of the hill.

*Non-Smoking
Tournament with
Hospitality Breaks*

*Free coffee, soft drinks,
and more ...*

Entries

*\$10.00/person
for pair games;
\$100.00/team—Includes
light lunch between
sessions; \$4 additional
per session for unpaid
ACBL members*

Tournament Chairs

Betsy Ruehl
540-942-3667
truehl@ntelos.net

Steve Rothman
434-296-1714

SCHEDULE OF EVENTS

FRIDAY, DECEMBER 7

10:30 AM . . .Open Stratified Pairs or 199er Pairs
The entry for these games is \$11. 40% more master-
points awarded helps fund the GNTs & NAPs

3:30 PM . . .Open Stratified Pairs or 199er Pairs

SATURDAY, DECEMBER 8

10:30 AM . . .Open Stratified Pairs or 199er Pairs
The entry for these games is \$11. 40% more master-
points awarded helps fund the GNTs & NAPs

3:30 PM . . .Open Stratified Pairs or 199er Pairs

Friday and Saturday Stratification Limits

0-750, 750-2000, 2000+ (199er at Director's discretion)
Stratification of pairs by average masterpoints. —No indi-
vidual may exceed the event's upper limit.

SUNDAY, DECEMBER 9

10:30 AM & TBABracketed Swiss Teams
8 teams in each bracket, 7 rounds, play-through

57th Annual

~ PRESIDENTIAL TOURNAMENT ~

at the **MARGARET SCHWEINHAUT SENIOR CENTER**

1000 Forest Glen Rd, Silver Spring, MD **Friday-Sunday only**

THURSDAY, JANUARY 3

- ♣ StrataFlighted A/X (unlim/2000) & B/C/D (1000/500/300) Pairs11:15 am
Rockville Duplicate Bridge Club, 301-503-3348 (Mark Lavine)
St. Mark Presbyterian Church, 10701 Old Georgetown Rd, N. Bethesda, MD
- ♦ StrataFlighted A/X (unlim/4000) & B/C/D (2500/1500/750) Pairs (*both sites*),
Intermediate/Novice Pairs (500/300/100) (*Obr Kodesh*), Stratified 199er Pairs
(200/100/50) (*Beth El*), & 0-20 Pairs (*both sites*)
Beth El Hebrew Congregation, 3830 Seminary Road, Alexandria7 pm
Ohr Kodesh Congregation, 8300 Meadowbrook Ln., Chevy Chase 7:30 pm
I-495 to Connecticut Ave. S. 4th light left E-W Hwy 410. Left Meadowbrook Ln.
1st left Freyman Dr. Parking lot on left. **No outside food allowed.**

FRIDAY, JANUARY 4

- ♣ *StrataFlighted A/X (unlim/4000) & B/C/D Pairs (2500/1500/750) (single sessions)11 am, 3 pm
- ♦ **Relaxed & Fun Stratified IMP Pairs/Teams** (unlim/2500/750) 7:30 pm
—**2 Chances to Win!**— This innovative game moves like a pair game & scores the better of your IMP pair & team game. Come as a team of 4 or as a pair & we'll find you teammates.
- ♠ Intermediate/Novice Pairs (500/300/100) & 49er Pairs (50/20/5) (single sessions) 11 am, 3 pm, 7:30 pm



New Life Master

Party—between sessions

SATURDAY, JANUARY 5

—Lunch available for purchase—

Win upgraded (more) masterpoints today! (\$1 additional fee supports Grass Roots events.)

- ♣ *StrataFlighted A/X (unlim/4000) & B/C/D Pairs (2500/1500/750) (single sessions) . .11 am, 3:30 pm
- ♦ Intermediate/Novice Pairs (500/300/100) & 49er Pairs (50/20/5) (single sessions)11 am, 3:30 pm

SUNDAY, JANUARY 6

WBL Trophy Race Winners' Presentation —Lunch available for purchase—

- ♠ Flights A/X (unlim/5000) Swiss Teams (*2 session playthrough w/break*)11 am & TBA
- ♣ Bracketed Flight B Teams (no single player >3000) (*2 session playthrough w/break*)11 am & TBA
B Teams Bracketed by total team masterpoints; three overall places in each.
- ♦ 500/300/100 Swiss Teams, VPs (single sessions)11 am, 3 pm
- ♣ **Lots of Intermediate & Novice Events w/ Silver Points! ♥ 0-5 MP play FREE!** ♠
Separate I/N events & strata as advertised as attendance allows. (Director's discretion.)

Hospitality includes snacks, drinks, & **Friday lunch & evening desserts**. Sat. & Sun. lunch available for purchase. **Tournament Chair: Brad Theurer**, 301-527-8819, batheurer256@gmail.com; **Partnerships: Barbara Doran**, 301-608-0347, barb.doran@verizon.net,

*StrataFlighted if attendance warrants—otherwise combined into Stratified Pairs (unlim/2500/750) Stratification by avg. masterpoints of the team or pair. No individual may exceed the event's upper limit.

Directions to the Margaret Schweinhaut Senior Center, 1000 Forest Glen Rd, Silver Spring, MD: I-495 to Georgia Avenue North (toward Wheaton). 1st light right on Forest Glen Rd. The Center is .7 mile on right.



2019...

*Cheers to a
New Year &
a New Deal!*

High Percentage Bridge, cont. from p. 7

Dummy is far from overwhelming. Still, any lead can cost the defense a trick. A spade gives them a ruff/sluff so that is out. A heart lead gives the opponents a finesse if Pard has the ♥K. A diamond lead could give the opponents a guess in that suit. A club lead could give the opponents a trick in a frozen suit situation. What is best?

If Pard has the ♥K, the contract is likely makeable regardless, as dummy is likely to have an entry with the ♣Q. Thus, a neutral heart return seems best. Declarer can still make the hand by guessing to play East for the doubleton ♦10, but that is against the odds. After pulling trump, declarer played ♦AK and a third diamond. That line of play would make the contract with doubleton ♦Qx or 3-3 diamonds and a forced club return, and successful guess. Because the lie of the diamonds was not as hoped, declarer went down. At the other table the ♦T was returned at trick three, which made the hand easy for declarer.

Here is the full deal:

North

- ♠ Q8
- ♥ QT54
- ♦ J763
- ♣ Q93

West

- ♠ AKJ542
- ♥ 76
- ♦ T2
- ♣ J42

East

- ♠ T96
- ♥ J2
- ♦ Q854
- ♣ K865

South

- ♠ 53
- ♥ AK983
- ♦ AK9
- ♣ AT7

2018-19

**NORTH AMERICAN
PAIRS**

**4 Pairs Qualify in the
0-2500 and NLM!
(3 in the Open)**

It's time to start thinking about the North American Pairs, a North American Championship that begins in your club and concludes at the Spring 2019 NABC in Memphis, TN. Come out and play in a local club qualifier. You've got to play to win!

Club qualifying for the 2018-2019 event continues until the end of August 2018. There are three Flights: Open, 0-2500 and Non-Life Master (with fewer than 500 points). Qualification in a flight qualifies you for all lower flights for which you are eligible. Qualification is by individual (not pair) — including flight eligibility — from any club qualifier in the ACBL directly to the District 6 Final. Flight eligibility is determined by your masterpoint holding on June 1, 2018. All players who play in the District Final must have qualified at the club level and be bona fide members of District 6. **There will be no exceptions.** See the District 6 website at

♠ **Richmond, VA** ♣ **JANUARY 11-13, 2019** ♦

Richmond Fall Sectional

—30% Bigger Playing Area—
—Plenty of Free Parking—
—Same Famous Richmond Hospitality—

ACCA Temple: 1712 Bellevue Avenue

Separate Friendly Bridge 0-300 games Fri. & Sat.

FRIDAY, JANUARY 11 *Newcomer Lecture* . . . 9:00 AM
RBA Friendly Bridge 0-300 game 10:00 AM / 3:00 PM
Stratified Open Pairs (750/2000/2000+) 10:00 AM
Stratified Open Pairs (750/2000/2000+) 3:00 PM

SATURDAY, JANUARY 12 *Newcomer Lecture* . . 9:00 AM
RBA Friendly Bridge 0-300 game 10:00 AM
Stratified Open Pairs (750/2000/2000+) 10:00 AM
Bracketed Pairs/Board-a-Match Teams 3:00 PM
A, B, and C play in sectional pairs game. At the same time, each pair is teamed according to MP (highest to lowest). Two chances to win!!

SUNDAY, JANUARY 13—*lunch provided*
Free coffee, bagels and donuts at 9:30 AM
Bracketed Swiss Teams 10:00 AM
Two brackets - Open and I/N bracket (no one player can have more than 500 points)

DIRECTIONS TO ACCA TEMPLE SHRINE, 1712 Bellevue Ave.:
From the West – take I-64 East to I-95 North. Take first exit (Exit 80 Hermitage/Lakeside). Stay straight on the ramp to the light. Turn right onto Hermitage Road. Go .2 of a mile and then turn right onto Bellevue Ave. Turn right into the parking lot. From the North – Take I-95 South to Exit 82 onto Route 301 towards Chamberlayne Ave. Go 1.4 miles and turn right onto Westwood Avenue. Go .9 miles and turn left onto Hermitage Road. Go .2 mile and turn right onto Bellevue. From the South – Take I-95 North. Merge with I-64 West and I-95 North. Stay on I-95 north towards Washington. Take Exit 80 (see above). From the East – Take I-64 West. Merge with I-95 N. Stay on I-95 north towards Washington and take Exit 80 (see above).



**FAMOUS RICHMOND
HOSPITALITY**

Free coffee, snacks
and soda available
each session

**TOURNAMENT
CHAIRS**

Barry & Winnie Fratkin
fratco@mac.com
804-741-6782 (H)
804-837-6782 (C)

**PARTNERSHIP
CHAIR**

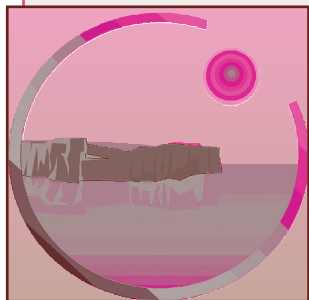
Anne Atwood
bsaintsd@aol.com,
804-357-1225

Norfolk/ Virginia Beach Winter Sectional

Unit 146 Bridge Center

4966 Euclid Road, Virginia Beach, VA 23462

—Stratification based on partnership/team average—



Directions: Take North Witchduck exit off I-264. After 4/10 mile, turn right onto Cleveland Street. After 3/10 mile, turn diagonally right on Euclid Road. The Bridge Center is at 4966 Euclid Road, 3/10 mile on the left, in the U-shaped Pocahontas Office Park.

Nearby Hotels: **Hampton Inn**, 5793 Greenwich Road, Virginia Beach, 757-490-9800
Motel 6, 4760 Euclid Road, Virginia Beach, 757-499-1935

Fri & Sat PM games regionally rated—extra points, no extra money.

Friday, January 25

(Light lunch served between sessions)

Stratified Pairs (single sessions)10:30 AM & 2:30 PM
(0-750, 750-1500, 1500+ MPs)

Novice Pairs (single sessions) . .10:30 AM & 2:30 PM
(0-100, 100-200, 200-NLM up to 500)

Saturday, January 26

(Light lunch served between sessions)

Stratified Pairs (0-750, 750-1500, 1500+ MPs) 10:30 AM

Novice Pairs10:30 AM
(0-100, 100-200, 200-NLM up to 500)

Bracketed Pairs/Board-A-Match Teams2:30 PM

(Play in a stratified pairs game. At the same time, each pair is teamed according to MP (highest to lowest). *Two chances to win!*)

Sunday, January 27

Stratified Swiss Teams (0-750, 750-1500, 1500+ MPs)10:30 AM & TBA

Novice Stratified Swiss Teams (0-100, 100-200, 200-NLM up to 500) . .10:30 AM & TBA

Entries: \$10 per person per pairs session; \$84 per team (includes meal between sessions for 4 team members). Additional \$4 for unpaid ACBL members.

Great Hospitality: Includes free snacks, sodas and coffee for all events.

— Strata may be adjusted at director's discretion based on attendance—

Tournament & Partnership Chair

Brian Boyce

brian@bfboyce.com

757-434-0792

Hospitality Chair

Bonny Deglow

bonnydegrow@gmail.com

757-620-3990

(www.districtsixbridge.org) for information on club games in your area.

The District 6 Final for all flights will be held on the weekend of November 10-11, 2018. The Open Flight and 0-2500 Flight Finals will be 4-session events, with roughly half the field qualifying for the second day. The NLM Flight Final will be a 2-session event held on Sunday, November 11.

The Open event and the Northern site for the 0-2500 and NLM competition will be at the White Oak Community Center, 1700 April Lane, Silver Spring, MD. Game time is noon and TBA on Saturday, and 11 and TBA on Sunday.

The 0-2500 and NLM will have a Southern site in Richmond VA, at the ACCA Temple, 1712 Bellevue Ave. (Bridge Rate is \$118.00 at the Hampton Inn, Glenside Rd. There are several other hotels nearby.) Game time is 10:30 am and 3:00 pm both days.

Players with 0-2500 MPs and NLMs with fewer than 500 MPs may play at either site.

Pre-registration is required in order to play in the District Finals. Pairs must pre-register by November 2. To pre-register, send the player names, contact information and player numbers and a check made

payable to District 6 in the amount of \$50.00, to cover two (2) sessions of the event.

For the NORTH, send it to: District 6, c/o Lucy McCoy, 3353 Taleen Ct., Annandale, VA 22003-1161.

Pre-register for the SOUTH by sending a check for \$50.00 along with player information to: Barry Fratkin, 1935 Hickoryridge Road, Richmond, VA 23238.

A list of registered pairs will be posted on the District 6 website after registration closes.

Qualifiers who play in the National Final will be subsidized (to various extents) for travel expenses and hotel rooms by the ACBL and/or District 6. Membership dues or Life Master service fee must be current and continuous from the start of the 2018-19 District Final to the completion of the North American Pairs Final at the Memphis NABC in order to play in the National Final.

For more information and directions to the playing sites, visit District 6 at:

www.districtsixbridge.org

or contact Bill Cole at:

colebridge@aol.com

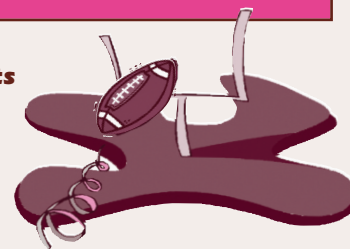
or 301-602-9024.

♣ Baltimore, MD ♦ FEBRUARY 1-3, 2019 ♥

The **MARYLAND BRIDGE ASSOCIATION** presents

BALTIMORE'S SUPERBOWL WEEKEND

at the



AMERICAN LEGION POST 109

✿ 1610 Sulphur Spring Rd., Halethorpe, MD 21227 ✿

Directions: See www.americanlegionpost109.org for detailed directions and map. Please note that there are two Sulphur Spring Roads here and do NOT turn onto Dewitt. If you're lost, call 410-242-5781.

Our ScheduleIncluding free coffee, soft drinks and refreshments and a Lecture with Game Analysis after the Saturday Morning Game! For the Sunday Swiss, sandwiches are available for purchase (partially subsidized by Maryland Bridge Association)

Catch the Silver!



FRIDAY, February 1

Stratified Grass Roots Pairs: 0-1500/3000/3000+ MPs1 pm
(The entry for this game is \$1 additional, 40% more masterpoints awarded! Helps fund the GNTs and NAPs)

Non-Life Master 499er Pairs: 0-100/200/500 MPs1 pm

Triple Nickel Swiss: (5 rounds, 5 boards, 5 minutes a board)7 pm

SATURDAY, February 2

Stratified Pairs: 0-1500/3000/3000+ MPs (single sessions) ..10 am & 3 pm

Non-Life Master 499er Pairs: 0-100/200/500 MPs10 am & 3 pm
(single sessions)

TOURNAMENT CHAIR

Ed Rothenheber

443-280-0828

rothenheber_ed@bah.com

PARTNERSHIPS

Pat Murty

410-323-6206

129firef@comcast.net

Surprises!



SUNDAY, February 3

Stratified Swiss Teams10:00 am - Playthru

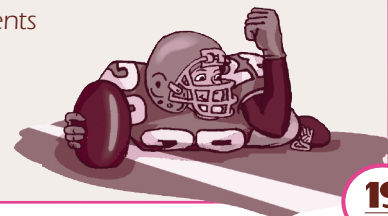
Stratified by average of total MPs

I/N Swiss Teams10:00 am & 2:00 pm

0-5/20/50 MPs & 100/200/500 MPs

2 single session events

**All Pair Events
are Single Sessions**



Thanks to Paul Linxwiler, Executive Editor, *ACBL Bridge Bulletin*, for permission to adapt text and photos based on the *NABC Daily Bulletin* for inclusion in this District 6 focused article. See p. 7 of "Youth NABC closes with record attendance" for the full DB write-up at: <http://cdn.acbl.org/nabc/2018/02/bulletins/db10.pdf>

District 6 Youth on Bridge Expedition from Williamsburg to Atlanta Youth NABC

The 11th Youth NABC, held concurrently with the 2018 Atlanta Summer NABC, ended with a celebratory dinner. Patty Tucker of Atlanta who dreamed of the event more than a decade ago, looked around the room of young players. She saw a variety of ages, races and cultures, all busy seeing old friends, making new ones and planning trips to the next YNABC, next summer in Las Vegas.

"This is what it's about," said Tucker. "The kids have one thing in common. They all love to play bridge. There are no social barriers."

The contingent from Williamsburg, including Evan Rabinowitz, was put together by **Jim Davis**, who has been leading groups of young players to YNABCs for the past five years, often at his own expense.

Said Rabinowitz, "Mister Davis is a real hero here."

Jim started the very successful Williamsburg/James City County after school bridge program in 2012. Undaunted by the challenges he faced getting volunteer bridge players to help teach classes,

he managed to get school administrators behind him, bringing school teachers into the mix. The challenge of finding teachers to participate and bridge players to help continues but Jim doesn't give up! He has hosted an annual youth tournament at the Williamsburg Regionals or winter sectionals every year since 2013, drawing youth from as far away as Virginia Beach. Ed Kinlaw and Paul Anderson, two directors from Richmond's Unit 109, always volunteer and work at the annual Williamsburg Youth Tournament.

Jim doesn't stop with the youth in the area, he also teaches adult classes and brings many new players into Unit 110 as ACBL members. He frequently plays with his adult students as a mentor.

The youth that Jim led to Atlanta numbered 19 this year. Williamsburg player Mary Gray is 17, very near to the upper age limit for participation in the tournament. "It's nice meeting a bunch of new kids, and it's kind of fun being the oldest one at the table," she said.



All but one of the youth group earned masterpoints. Many won trophies. The highest honor went to **Ashley Thomas**, who was chosen by the 237 other youth players to receive the Master Point Press Sportsmanship Award. That honor also includes a scholarship worth \$1,000.

When the school year starts this fall, Ashley will be a sophomore at Warhill High School in her home town. Pleased with being selected for the trophy, Ashley commented that "I always try to be nice." Although at present she is interested in community theater, Ashley said her ultimate goal is to become a veterinarian.



Upon their homecoming, Jim and Ashley (*Ashley—in absentia*) were recognized for their achievements during **District 6's Hunt Valley Regional** on Wednesday, August 15.

D6 President, Shawn Stringer, spoke and then presented Jim Davis (*in picture to the far left*) with a certificate of appreciation and a poster of the Daily Bulletin Youth NABC article (*shown being held by D6 Vice President, Jane Farthing, another Unit 110 member*).

The certificate expresses, "**With deep appreciation to Jim Davis for his tireless efforts to youth bridge** — District 6 is grateful for Jim's unrelenting dedication to

youth bridge in Williamsburg/James County. [...] For his devotion to youth and his mentoring of adults, District 6 extends its heartfelt thanks."

Jim Davis became both an ACBL and D6 Goodwill Member in 2014. Appointments to the District 6 Goodwill Committee are made annually by the units to members to recognize actions at the local level, and annually to the ACBL Goodwill Committee by the District Director to individuals whose actions extend beyond their local units. (Once on the National Committee, one is automatically on the D6 Committee as well.) These new Goodwill Members were inducted during the Hunt Valley Regional:

New Members of the ACBL National Goodwill Committee — August 2018

**Barry Fratkin Winnie Fratkin
Rusty Krauss**

New Members of the District 6 Goodwill Committee — August 2018

UNIT 109—The Richmond Bridge Assc.
Anne Alferink Harry Alferink

UNIT 110—Virginia Peninsula
Ron Alldaffer

UNIT 139—Virginia Piedmont
Terry Garner Mike Lane

UNIT 146—Virginia State Bridge Assc.
Beth Rafferty

UNIT 147—The Washington Bridge League
Hakan Berk

UNIT 218—The Northern Virginia Bridge Assc.
Ann Atcheson Katie Culp

All Goodwill Committee Members are listed on the D6 website at: <http://www.districtsix.org/?request=Goodwill>

The Mid-Atlantic...

Home to the ACBL's premier Regionals — hosting 33,000 tables during this past year. It's time to check your 2018-19 calendar and plan to play in the biggest and best tournaments of the year. Mid-

Atlantic regionals offer loads of Bracketed Knockouts, exciting Intermediate/ New-comer schedules and lec-

1 Year DISTRICT 6 Calendar OF EVENTS

tures, and our three favorite words: hospitality, hospitality, hospitality.

.....August, 2018

P 2...Aug 13-19 Hunt Valley, MD REGIONAL
Mary Jo Chiesa, quigs8448@aol.com, 410-353-7953 & Stuart Diener, stuarddiener@gmail.com, 443-465-6733

Aug 20-26 . . .D4 & D6 Balt. Unit 135 StAc
Don Berman, 301-776-3581, don.berman@verizon.net

P 6...Aug 25-26 Norfolk/Va. Beach, VA NLM
Kathleen Haglich, 757-467-4136, kathyvsh@gmail.com

P 4...Aug 28-Sep 3 Augusta, GA D7 REGIONAL
Robert Coleman, csrabridge@yahoo.com

.....September, 2018

P 7...Sep 6-9Fairfax, VA
Margot Hennings, 703-560-0245, margot10bridge@cox.net

P 8...Sep 14-16Norfolk/Va Beach, VA
Brian Boyce, 757-412-4925, brian@bfboyce.com

P 9...Sep 15-16Pikesville, MD NLM
Lynn Jones, 410-560-3244, bridgelynn@comcast.net

Sep 22-Oct 6ORLANDO, FL
15th World Bridge Series

P 3...Sep 28-30 . .Williamsburg, VA NLM REGNL
Jane Farthing, 703-850-9635, jane.farthing@gmail.com

P 10...Sep 28-30Williamsburg, VA
Jane Farthing, 703-850-9635, jane.farthing@gmail.com

.....October, 2018

P 11...Oct 11-14Silver Spring, MD
Brad Theurer, 301-527-8819, batheurer256@gmail.com

P 12...Oct 12-14Richmond, VA
Barry and Winnie Fratkin, 804-741-6782 (H) , 804-837-6782 (C), fratco@mac.com

P 13...Oct 12-14D7 Abingdon, VA
Auggie de Weerd, 619-886-5139, abingdonbridgeclub@yahoo.com

.....October, continued...

P 4...Oct 22-28 . .Charlotte, NC D7 REGIONAL
David Smith, davidbsmith@bellsouth.net

P 13...Oct 25-28Fairfax, VA
Margot Hennings, 703-560-0245, margot10bridge@cox.net

Oct 29-Nov 4D4 REGIONAL Lancaster, PA
John Klinger, dhklinger@epix.net

.....November, 2018

P 14...Nov 10Richmond, VA NLM
Ed Kinlaw, 804-744-4870, mekinlaw@yahoo.com

Nov 10-11D6 NAP Finals

Nov 12-18D6 & Unit 190 StAc
Don Berman, 301-776-3581, don.berman@verizon.net

Nov 22-Dec 2 . .HONOLULU, HI NATIONALS
Fall North American Bridge Championships

.....December, 2018

P 15...Dec 7-9Charlottesville, VA
Betsy Ruehl, 540-942-3667, etruehl@ntelos.net

Dec 10-16D6 & Unit 190 StAc
Don Berman, 301-776-3581, don.berman@verizon.net

P 5...Dec 27-Jan 2 Charleston, SC D7 REGNL
Karen Galleher, 843-318-6391, kgalleher@sc.rr.com

.....January, 2019

P 16...Jan 3-6Silver Spring, MD
Brad Theurer, 301-527-8819, batheurer256@gmail.com

P 17...Jan 11-13Richmond, VA
Barry and Winnie Fratkin, 804-741-6782 (H) , 804-837-6782 (C), fratco@mac.com

Jan 19-20GNT Flight A (0-6000)
1st weekend

P 18...Jan 25-27Norfolk/Va Beach, VA
Brian Boyce, 757-412-4925, brian@bfboyce.com

.....February, 2019

P 19...Feb 1-3Halethorpe, MD
Ed Rothenheber, 443-280-0828, rothenheber_ed@bah.com

Feb 4-10D6 & Unit 190 StAc
Don Berman, 301-776-3581, don.berman@verizon.net

Feb 11-17Wilmington, NC D7 REGIONAL
Larry Harding, larry.harding57@gmail.com

Feb 16-17GNT Open, Flight B, Flight C
1st weekend

Feb 21-24Fairfax, VA
Margot Hennings, 703-560-0245, margot10bridge@cox.net

Feb 25-Mar 3 . .Chattanooga, TN D7 REGIONAL
Bert Shramko, stdoms48@gmail.com

.....March, 2019

Mar 1-3Williamsburg, VA
Jane Farthing, 703-850-9635, jane.farthing@gmail.com

Mar 9-10GNT Open, Flight B, Flight C
2nd weekend

Mar 15-17Fredericksburg, VA
Deborah Hage, debhage@hotmail.com, 540-659-1321

Mar 14-17 . . .High Point, NC D7 NLM REGNL
Cindy Wright, 336-407-9842, crwbridge@yahoo.com

Mar 21-31MEMPHIS, TN NATIONALS
Spring North American Bridge Championships

.....April, 2019

Apr 4-7Silver Spring, MD
Brad Theurer, 301-527-8819, batheurer256@gmail.com

Apr 5-7Lynchburg, VA
Anne Barlow, abarlow503@gmail.com

Apr 6-7GNT Flight A (0-6000)
2nd weekend

Apr 12-14Norfolk/Va Beach, VA
Brian Boyce, 757-412-4925, brian@bfboyce.com

Apr 22-28Gatlinburg, TN D7 REGIONAL
Julia Misslin, 423-884-3550, jupe60@tds.net

.....May, 2019

May 2-5Fairfax, VA
Margot Hennings, 703-560-0245, margot10bridge@cox.net

May 6-12D6 StAc
Don Berman, 301-776-3581, don.berman@verizon.net

May 16-17Trappe, MD
John & Willie DiLaura, jwdilaura@yahoo.com, 443-262-8062

May 20-26Richmond, VA REGIONAL
George Lewis, richmondregional@aol.com

May 30-Jun 2Silver Spring, MD
Brad Theurer, 301-527-8819, batheurer256@gmail.com

May 31-Jun 2Blacksburg, VA
Rich Rio, 540-553-6228, richrio428@yahoo.com

.....June, 2019

Jun 7-9Halethorpe, MD
Ed Rothenheber, 443-280-0828, rothenheber_ed@bah.com

Jun 10-16D6 StAc
Don Berman, 301-776-3581, don.berman@verizon.net

Jun 10-16Greenville, SC D7 REGIONAL
Richard Brown, 864-855-1474, rbbrown100@charter.net

Jun 21-23Richmond, VA
Barry and Winnie Fratkin, 804-741-6782 (H) , 804-837-6782 (C), fratco@mac.com

Jun 24-30D4 REGIONAL King of Prussia, PA
Meyer Kotkin, mhk22@cornell.edu

Jun 28-30Norfolk/Va Beach, VA
Brian Boyce, brian@bfboyce.com, 757-434-0792

.....July, 2019

Jul 1-7Reston, VA REGIONAL
Amanda Carter, aecarter3@juno.com

Jul 18-28LAS VEGAS, NV NATIONALS
Summer North American Bridge Championships

2017-18 Grand National Teams — District 6 Winners!

Sixty teams competed in the Grand National Team competition this year. Congratulations to the winners! Following are the results of the District level competition. At the Summer 2018 NABC in Atlanta, District 6 first place winners competed against the other districts' qualifiers in the national finals in their brackets.

WINNERS: OPEN BRACKET

1 Leo LaSota - David Ruderman - Mark Chen - Brad Theurer.....8th - 16h in NABC Finals

- 2 Beth Palmer - William Cole - Steve Robinson - Peter Boyd
- 3 / 4 —Linda Marshall - Mary Tenenbaum - David Rodney - Avril Rodney
—Marc Warner - Dewayne Jones - Mark Dahl - David Butler
- 5 / 8 —Martin Graf - Mark Shaw - Andrew Gofreed - Alan Tenenbaum - Muh-Sha Crawford
—Rusty Krauss - Barry Falgout - David Milton - Stan Schenker
—Sorina Negulescu - Shawn Stringer - Daniela Tunsanu - Radu Tunsanu
—Donna Rogall - Clyde Kruskal - Sumner Steinfeldt - Hal Hindman

WINNERS: A BRACKET (0-6000)

1 Marc Warner - Joe Wallen - Robert Pustilnik - Franklin Price.....5th - 8th in NABC Finals

- 2 Mark Laken - Barry Ko - Joseph Trapani - Richard Baum
- 3 / 4 —Shawn Stringer - Julian Boyce - Donald Berman - Edward Rothenheber - Kenneth Hopke
—Tracy Brines - Thomas Hirsch - Howard Miller - Richard DePaulo
- 5 / 8 —Mike Berard - Murat Berk - Richard Wissing - David Grabiner - Art McCann - Peter Van Zijl
—Ellen Cherniavsky - Robin Taylor - Linda Marshall - Mary Tenenbaum
—Adam Gann - Zach Madden - Sven Pride - Vincent Wilmot Jr - Hal Hindman - David Genne
—Sorina Negulescu - Jeffrey Halle - Thomas Peters - Mary Peters

WINNERS: B BRACKET (0-2500)

1 Leah Shao, Will Colmer, Adam Gann, Hakan Berk

- 2 Albert Lauber - James Beller - Walter Smith Jr - Hadi Abushakra
- 3 / 4 —Eugene Fisher - Jeffrey Kosnett - Ernie Schuler - Thomas Grahame
—Michael Kelley - Eberhard Jehle - Cathryn Collins - Craig Huneke

WINNERS: C BRACKET (0-500 NLM)

1 Michael Corrigan, James Mosley, Harry Potter, Jeffrey Yutzler, Richard Padgett, Jennifer Colmer5th - 8th in NABC Finals

- 2 / 3 —Michael Murphy - Jean Murphy - Virginia Cenedella - Betsy Carlson
—Gary Scavongelli - Janice Scavongelli - Craig Pritzker - Charles Van Horn