

## TABLE

## TALK

see  
**New Events**  
on inside  
cover &  
p. 16

### NEW Regional Events

**Alert!** We have two new Knockout variations for you to try at the Chesapeake Regional!

1. The "Round Robin Knockout"
2. The "Start for FREE—Play for Three Knockout"

WWW

## **District 6 TableTALK**

### **EDITORIAL BOARD**

**Bill Cole, PUBLISHER**  
**Donna Rogall, CREATIVE DIRECTOR, EDITOR**  
**Lucy McCoy, MANAGING EDITOR**  
**Steve Robinson, EMAIL MANAGER**

**CONTRIBUTING EDITORS:**  
**Barbara Doran, Margot Hennings**

**COLUMNISTS:**  
**Shawn Stringer, Margot Hennings,**  
**Lynn Jones, Sylvia Shi**

### **DISTRICT SIX OFFICERS**

**ACBL District 6 Director:**

**Margot Hennings**

**Margot10bridge@cox.net**

**President: Shawn Stringer**

**shstringer@aol.com**

**Vice President: Jane Farthing**

**jane.farthing@gmail.com**

**Secretary: Susan B. MacLaughlin**

**sbmak121@comcast.net**

**Treasurer: Ron Spieker**

**tip001@verizon.net**

### **UNIT PRESIDENTS**

**Unit 109: Richmond: Barry Fratkin**  
**fratco@mac.com**

**Unit 110: Peninsula: Ron Alldaffer**  
**balldaffer@charter.net**

**Unit 135: Maryland: Lynn Jones**  
**bridgelynn@comcast.net**

**Unit 139: Piedmont: David Butler**  
**dbutler934@aol.com**

**Unit 146: VA State: Brian Boyce**  
**brian@bfboyce.com**

**Unit 147: Wash. DC: Ellen Cherniavsky**  
**eachernia@yahoo.com**

**Unit 218: Northern Va: Marty Bley**  
**nvbapresident2017to**  
**2019@gmail.com**

**Unit 231: SW Virginia: Rich Rio**  
**richrio428@yahoo.com**

*Send comments or inquiries to Lucy McCoy,  
Managing Editor at [lucymccoy@verizon.net](mailto:lucymccoy@verizon.net)*

# **DISTRICT** **6** **Table**

## **PRESIDENT'S MESSAGE** —*Shawn Stringer, [shstringer@aol.com](mailto:shstringer@aol.com)*

In my dual role as District 6 President and a Tournament Chair for the Chesapeake Regional (November 13-19, Cambridge, MD), I am doubly delighted to announce that ACBL has given permission for trial runs of two variations of standard Knockout events. While event sponsors do not like to change/add events once advertised, both of these events are a direct result of player input and have been designed and will be tweaked specifically to benefit all levels of players. Full descriptions will be posted on the District 6 website once finalized.

**Round Robin Knockout (RRKO):** The RRKO format is a four-session KO in which the first two sessions are played as an all-day round robin. At the end of the day, there will be four teams remaining in each bracket. The second day format will be the same as a standard KO, going from four teams to two to one bracket winner. Note that this format is not new in D6 since it is routinely used in our 0-6000 GNT events.

The benefit of the RRKO is that it allows for smaller brackets when there are not enough teams for the “ideal” 16-, 12- or 9-team bracket. The format helps avoid pulling into the top bracket teams who are more comfortable playing in Bracket 2. We plan to run the RRKO on Tuesday, November 14, at the Chesapeake Regional.

The second event doesn't yet have a catchy title, so I have nicknamed it the “Start for Free—Play for Three” KO. This event is a one-day 3-session KO, but it is not like other such KOs that run at 9, 1 & 7. This trial event will start at 10:30 AM and there will be just 18 boards, so that players who do not advance can still play in the 1 PM pair games. The second session will start at 2 PM and consist of 20 boards, and players should finish about the same time as other afternoon events.

Teams that do not advance can play Swiss or relax and enjoy an Eastern Shore dinner. The third session will start at the normal 7 PM time, but will have just 22 boards (unless the teams really want to play 24).

We plan to offer this KO on Saturday, November 18, of the Chesapeake Regional and the first session is FREE – you play as guests of District 6. Entry fees for the other two sessions are reduced to \$10/session. The many benefits of this format include:

- increases likelihood that teams can play where they want to play

TO GET ON AN EMAIL LIST FOR **BRIDGE NEWS & BRIDGE PROBLEMS**, SEND A NOTE REQUESTING SUCH TO STEVE ROBINSON AT [ROBINSWR1941@GMAIL.COM](mailto:ROBINSWR1941@GMAIL.COM)



## idbids

page

<b>District 6 President's Message</b> . . . inside cover	
Shawn Stringer	
<b>D7 Regional: Hilton Head, SC</b>	
Feb 5-11 . . . . .	2
<b>D7 Regional: Pine Mountain, GA</b> , Mar 19-25 . . . . .	4
<b>D7 Regional: Gatlinburg, TN</b>	
Apr 16-22 . . . . .	6
<b>District 6 STaCs:</b>	
Dec 11-17, Jan 22-28, & May 7-13 . . . . .	12
<b>1-Year District 6 Calendar of Events</b> . . .	20

- teams with four to six players are eligible
- all teams can play Sunday Swiss since this event gets finished in one day
- although three sessions, there are fewer boards than a typical 3-session event, and only two teams per bracket actually play the maximum of 60 boards

The Chesapeake Regional is fortunate to have a gorgeous facility, a super hotel staff, and a fantastic group of volunteers. Now we have some creative new events to offer – so I hope you will come out and play and enjoy a wonderful week on the Eastern Shore.



## Ace Analyses

page

<b>Looking Ahead from Toronto to San Diego</b>	
from District Director Margot Hennings . . . . .	11
<b>2017-18 Grand National Teams—Frequently Asked Questions</b> . . . . .	18
<b>2017-18 Grand National Teams—Get Your Team Together!</b> . . . . .	back cover



## Locating Games

<b>D6 REGIONALS</b>	page
<b>Cambridge, MD</b>	
Nov 13-19 . . . . .	3
<b>Williamsburg, VA</b>	
Feb 26-Mar 4 . . . . .	5
<b>SECTIONALS</b>	
<b>Williamsburg, VA</b>	
Nov 10-12 . . . . .	8
<b>Charlottesville, VA</b>	
Dec 8-10 . . . . .	9
<b>Silver Spring, MD</b>	
Jan 4-7 . . . . .	10
<b>Norfolk/Virginia Beach, VA</b>	
Jan 5-7 . . . . .	11
<b>Richmond, VA</b>	
Jan 12-14 . . . . .	12
<b>Halethorpe, MD</b>	
Feb 2-4 . . . . .	13
<b>Fairfax, VA</b>	
Feb 15-18 . . . . .	14
<b>Fredericksburg, VA</b>	
Mar 16-18 . . . . .	15
<b>Lynchburg, VA</b>	
Mar 23-25 . . . . .	16
<b>Silver Spring, MD</b>	
Apr 5-8 . . . . .	17
<b>Norfolk/Virginia Beach, VA</b>	
Apr 6-8 . . . . .	18
<b>Fairfax, VA</b>	
Apr 26-29 . . . . .	19
<b>Trappe, MD</b>	
May 17-18 . . . . .	20



## Keeping Winners

<b>Bethesda, MD</b>	page
D6 Regional Winners . . . . .	7
<b>Hunt Valley, MD</b>	
D6 Regional Winners . . . . .	7
<b>Toronto, Canada</b>	
D6 National Winners . . . . .	8
<b>2017-18 North American Pairs—District Level Winners</b> . . . . .	17

### District 6 TableTALK

(ISSN#1543-3978)

Printed copies of TableTALK will be available at District 6 events.

## ACBL'S THIRD LARGEST REGIONAL

This luxurious Marriott Resort and Spa, on this semi-tropical island paradise, will be the setting for a gala week featuring great bridge competition and Low Country Hospitality. Miles of white sand beaches, golf, sailing, tennis, outlet shopping and superb restaurants are island attractions.



### MONDAY, FEBRUARY 5

Gator Knockout .....	1 & 7
<i>Continues at 1 &amp; 7 Tuesday</i>	
Open Pairs (1500/3000/3000+).....	1 & 7
Gardenia GOLD RUSH Pairs.....	1 & 7
Seagull Side Series (1st, 2nd of 4) .....	1/7
Non-LM 49er & 499er Pairs .....	1/7
Stratified Swiss Teams .....	7
Non-LM 499er Swiss Teams.....	7
<i>Aft. pair games benefit ACBL Ed Foundation; Eve. pair games benefit local charity</i>	

### TUESDAY, FEBRUARY 6

*0-5 MP players play free today*

Azalea Compact Knockout.....	9
<i>Continues at 9 Wednesday</i>	
Pelican GOLD RUSH Pairs .....	9 & 1
Early Bird Side Series (1st of 5) .....	9
Sunrise Non-LM 49er & 499er Pairs .....	9
Seascape Knockout .....	1 & 7
<i>Continues 1 &amp; 7 Wednesday</i>	
AX Pairs .....	1 & 7
Mid-Flight Pairs .....	1 & 7
Seagull Side Series (3rd, 4th of 4) .....	1/7
Non-LM 49er & 499er Pairs .....	1/7
Stratified Board-a-Match Teams.....	7
"Need that Gold" Two-night GOLD RUSH Swiss Teams .....	7
<i>Continues at 7 Wednesday</i>	

### WEDNESDAY, FEBRUARY 7

Yemessee Two-Morning Open Swiss Teams (Open/3000) .....	9
<i>Continues at 9 Thursday</i>	
Camellia GOLD RUSH Pairs .....	9 & 1
Early Bird Side Game Series (2nd of 5) .....	9
Sunrise Non-LM 49er & 499er Pairs .....	9
Gullah Knockout .....	1 & 7
<i>Continues at 1 &amp; 7 Thursday</i>	
AX Pairs .....	1 & 7

### WEDNESDAY, continued...

Mid-Flight Pairs .....	1 & 7
Palmetto Side Series (1st, 2nd of 4) .....	1/7
Non-LM 49er & 499er Pairs .....	1/7
Stratified Swiss Teams .....	7
Non-LM 499er Swiss Teams.....	7

### THURSDAY, FEBRUARY 8

Osprey Compact Knockout .....	9
<i>Continues at 9 Friday</i>	
Cardinal GOLD RUSH Swiss Teams ..	9 & 1
GOLD RUSH Pairs .....	9 & 1
Early Bird Side Game Series (3rd of 5) ..	9
Sunrise Non-LM 49er & 499er Pairs .....	9
Mid-week AX Swiss Teams.....	1 & 7
Mid-week Mid-Flight Swiss Teams .....	1 & 7
Open Pairs.....	1 & 7
Palmetto Side Series (3rd, 4th of 4) .....	1/7
Non-LM 49er & 499er Pairs .....	1/7
Stratified Board-a-Match Teams .....	7
Non-LM 499er Swiss Teams.....	7

### FRIDAY, FEB 9—GOODWILL DAY

Heron Two-Morning Open Swiss Teams ..	9
<i>Continues at 9 Saturday</i>	
Ibis GOLD RUSH Pairs .....	9 & 1
Early Bird Side Game Series (4th of 5) ..	9
Dolphin Knockout.....	1 & 7
<i>Continues at 1 &amp; 7 Saturday</i>	
AX Pairs .....	1 & 7
Mid-Flight Pairs .....	1 & 7
Plantation Side Series (1st, 2nd of 6) .....	1/7
Non-LM 49er & 499er Pairs .....	1/7
50 & 100/300/500 .....	1/7
Stratified Swiss Teams .....	7
Non-LM 499er Swiss Teams.....	7

### SATURDAY, FEBRUARY 10

Stratified Swiss Teams .....	9
Early Bird Side Game Series (5th of 5) ..	9

## Marriott Resort and Spa

— (843) 686-8400 —

1 Hotel Circle  
Rt. 278 at Milepost #8

Bridge Rate  
\$115

— FREE PARKING FOR EVERYONE —

### Low Country Classic!

- ✦ Registration gifts and prizes for section tops and overall winners
- ✦ Expert lectures Tuesday through Saturday
- ✦ Renowned Mid-Atlantic Non-Life Master Program
- ✦ Open hospitality suite
- ✦ Partnership desk open one hour before game time
- ✦ Seven GOLD RUSH events for 0-750 MP players, including four games at 9:00 & 1:00



### Tournament Co-chairs

**ANN GRINDSTAFF**  
(843) 341-6337  
annkurt52@gmail.com

**TOM SCHLOSSBERG**  
(843) 757-2034  
tom.schloss@gmail.com

### I/N Chairs

**PETER & LIBBY SEERY**  
(843) 363-4027  
pseery1@gmail.com

### Partnerships

**ELLERI & MICHAEL MELNICK**  
(843) 671-5006  
mikejem32@yahoo.com

### Directors Course

Priscilla Smith will teach a director's course the weekend before the tournament, Feb 2-4.

*For more information or to sign up, contact: PRISCILLA SMITH (770) 973-7717, rufnsluf@mindspring.com*

- ✦ Strats determined by MP averages, but no player may exceed event's limit.
- ✦ All KOs are bracketed, random draw with no playbacks until unavoidable. 1- and 2-bracket KOs are handicapped.
- ✦ One session open events, including side series, stratified 0-750, 750-3000, 3000+
- ✦ Two-session open events stratified 0-1500, 1500-3000, 3000+
- ✦ AX/Y strats: 0-4000, 4000-6000, 6000+; AX strats: 0-5000, 5000+; Mid-flight strats: 0-2000, 2000-4000
- ✦ Gold Rush strats: 300/750 (gold points for 750 strat overalls and section tops)
- ✦ Under 500 MP games stratified at director's discretion
- ✦ Please do not feed the alligators

### SATURDAY, continued...

Sunrise Non-LM 49er & 499er Pairs.....	9
Sandpiper Bracketed Teams .....	1 & 7
Open Pairs .....	1 & 7
Magnolia GOLD RUSH Pairs.....	1 & 7
Plantation Side Series (3rd, 4th of 6) .....	1/7
Non-LM 49er & 499er Pairs .....	1/7
Stratified Board-a-Match Teams.....	7
Non-LM 499er Swiss Teams.....	7

### SUNDAY, FEBRUARY 11

AX/Y Swiss Teams .....	10 & TBA
Bracketed Flight B Swiss Teams 10 & TBA	
<i>0-3000 MP</i>	
<i>round robin w/in each bracket</i>	
Plantation Side Series (5th, 6th of 6) .....	10/2
Non-LM 49er & 499er Pairs .....	10/2

The Hyatt is a gorgeous resort on Maryland's historic Eastern Shore. Amenities include a championship golf course and a European health spa for pampering and relaxation.

—A short trip from major East Coast cities and Maryland/DC airports—

—Restaurants on site and in town provide festive Bay dining—

Terrific room rate of \$114

Call 888-421-1442 by Oct. 16 and mention "BRIDGE" to reserve

Book early—hotel will sell out!

Note hotel penalty for late cancellation



STRATS DETERMINED BY MP AVERAGES, BUT NO PLAYER MAY EXCEED EVENT LIMIT: STRATS FOR <500 EVENTS BASED ON ATTENDANCE

**Monday, November 13**

- Open Pairs 1500/3000/3000+ .....1 & 7
- Rockfish *Gold Rush* Pairs .....1 & 7
- Assateague Lighthouse KO .....1 & 7

*Continues 1 & 7 Tuesday*

- I/N Pairs 5/20/50 & 100/300/500 .....1 / 7
- Annapolis Side Series (1st, 2nd of 6) .....7
- Charity Swiss Teams .....7

*Afternoon games benefit ACBL Ed. Foundation  
Evening games benefit local charity*

**Tuesday, November 14**

- Choptank Compact KO .....9
- Two 12-board matches, continues 9 am Wed.*
- Baltimore Side Series (1st of 5) .....9
- I/N Pairs 5/20/50 & 100/200/300..9 / 1 / 7

*(0-5 players play FREE today)*

- Open Pairs 1500/3000/3000+ .....1 & 7
- Blue Heron *Gold Rush* Pairs .....1 & 7

\***Thomas Point Round Robin KO** .....1 & 7

*Continues 1 & 7 Wednesday*

- Annapolis Side Series (3rd, 4th of 6) .....1 / 7
- Stratified Swiss Teams .....7



**Chesapeake Regional**

HYATT REGENCY CHESAPEAKE BAY RESORT

100 HERON BOULEVARD  
CAMBRIDGE, MARYLAND

- Eastern shore hospitality every night—
- Terrific I/N program with guest lectures—
- Full Monday Gold Point schedule—
- Team events starting every day—
- Six Gold Rush games—

**Friday, November 17**

- Wicomico Stratified Swiss Teams .....9
- Baltimore Side Series (4th of 5) .....9
- I/N Pairs 5/20/50 & 100/200/300 .....9 / 1 / 7
- A/X Pairs 0-5000/5000+ .....1 & 7
- Mid-flight Pairs 0-1500/3000 .....1 & 7
- Terrapin *Gold Rush* Pairs .....1 & 7
- Sandy Point Lighthouse KO .....1 & 7

*Continues 1 & 7 Saturday*

- Kent Island Side Series (3rd, 4th of 4) .....1 / 7
- Stratified Swiss Teams .....7

**Saturday, November 18**

- Chester Stratified Swiss Teams .....9
- Baltimore Side Series (5th of 5) .....9
- I/N Pairs 5/20/50 & 100/200/300 .....9 / 1 / 7
- Open Pairs 1500/3000/3000+ .....1 & 7
- Oyster *Gold Rush* Pairs .....1 & 7

\***Start for FREE—Play for Three KO**

*(One-day, 3-session KO) .....10:30 / 2 / 7*

- Easton Side Series (1st, 2nd of 4) .....1 / 7
- Stratified Swiss Teams .....7

**Sunday, November 19**

- Cambridge A/X/Y Swiss
- 0-4000/6000/6000+ .....10 & TBA
- Bracketed Flight B Swiss 0-3000 .....10 & TBA
- No player over 3000 MPs; 8 teams per bracket;  
3 teams in each bracket win gold*
- Easton Side Series (3rd, 4th of 4) .....10 / 2

**Wednesday, November 15**

- Nanticoke Compact KO .....9
- Two 12-board matches, cont. 9 am Thurs.*

- Baltimore Side Series (2nd of 5) .....9
- I/N Pairs 5/20/50 & 100/200/300 .....9 / 1 / 7
- A/X Pairs 0-5000/5000+ .....1 & 7
- Mid-flight Pairs 0-1500/3000 .....1 & 7
- Blue Crab *Gold Rush* Pairs .....1 & 7
- Currituck Lighthouse KO .....1 & 7

*Continues 1 & 7 Thursday*

- Annapolis Side Series (5th, 6th of 6) .....1 / 7
- Stratified Swiss Teams .....7

**Thursday, November 16**

- Potomac Compact KO .....9
- Two 12-board matches, continues 9 am Friday*
- Baltimore Side Series (3rd of 5) .....9
- I/N Pairs 5/20/50 & 100/200/300 .....9 / 1 / 7
- Ralph White Open Swiss 0-5000/5000+ .....1 & 7
- Mid-flight Swiss 0-1500/3000 .....1 & 7
- Chesapeake *Gold Rush* Swiss .....1 & 7
- Kent Island Side Series (1st, 2nd of 4) 1 & 7

\***Two new KO formats Tues. & Sat. (See inside front cover of this issue)**

**Tournament Chairs**

Shawn Stringer 301-275-6363 shstringer@aol.com  
Jennifer Koonce 410-674-5158 kooncejf@comcast.net

**Partnerships**

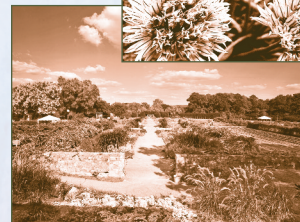
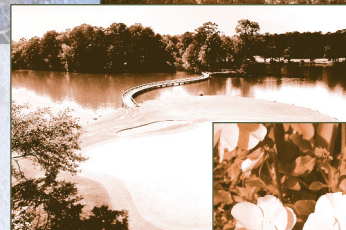
Zeke Letellier, 410-451-1772, zekeletellier@gmail.com

▶ OPEN EVENTS AND SIDE SERIES, ARE STRATIFIED 0-750/750-3000/3000+ UNLESS NOTED

- ▶ **GOLD RUSH EVENTS (0-300/300-750) AWARD GOLD POINTS TO OVERALL WINNERS AND 0-750 SECTION TOPS; RED POINTS TO 0-300 STRAT**
- ▶ **ALL KOs ARE BRACKETED, RANDOM DRAW: 1- & 2-BRACKET KOs HANDICAPPED; NO PLAYBACKS BELOW TOP BRACKET IF POSSIBLE**
- ▶ **TO BE SEEDED, PAIRS MUST BUY ENTRIES NO LATER THAN 15 MINUTES PRIOR TO GAME TIME**

PINE MOUNTAIN, GA ♦ MARCH 19-25, 2018

In the foothills of the Appalachians



# Callaway Gardens

**Great new venue: The Lodge and Spa at Callaway Gardens (844) 881-0424; 4504 Southern Pine Dr, Pine Mountain, GA**

**SOUTHERN PINES COTTAGES:** Two bedroom cottages at \$103 per bedroom. Most are a short walk to the Lodge & Spa, shuttle provided for further cottages, includes full kitchen, fireplace, screen porch, grill, hot tub (not handicap accessible)

\* \$103/night includes internet, access to gardens, fitness center, valet parking. All bridge events will be at the Lodge and Spa

ALL KNOCKOUTS ARE BRACKETED, RANDOM DRAW WITH NO PLAYBACKS UNTIL UNAVOIDABLE. 1 & 2-BRACKET KOs ARE HANDICAPPED.

## MONDAY, MARCH 19

Chattahoochee Valley DBC KOs . . . . . 7:30  
CONTINUES 1:30 & 7:30 TUESDAY  
Open Pairs . . . . . 1:30 & 7:30  
**Gold Rush** Pairs . . . . . 1:30 & 7:30  
Macon DBC Side Series (1st of 5) . . 7:30  
Non-LM 49er & 499er Pairs . 1:30 / 7:30  
Stratified Board-a-Match Teams . . . 7:30  
Non-LM 499er Swiss Teams . . . . . 7:30  
AFT. PAIR GAMES BENEFIT ACBL Ed FOUNDATION  
EVE. PAIR GAMES BENEFIT LOCAL CHARITY

## TUESDAY, MARCH 20

0-5 MP PLAYERS PLAY FREE TODAY  
Discovery Center Compact Knockout 9:30  
CONTINUES 9:30 WEDNESDAY  
Azalea Side Series (1st of 5) . . . . . 9:30  
Earlybird NLM 49er and 499er Pairs 9:30  
Day Butterfly Center Knockout 1:30 & 7:30  
CONTINUES 1:30 & 7:30 WEDNESDAY  
Open Pairs . . . . . 1:30 & 7:30  
**Gold Rush** Pairs . . . . . 1:30 & 7:30  
Macon DBC Side Series  
(3rd, 4th of 4) . . . . . 1:30 / 7:30  
Non-LM 49er & 499er Pairs . 1:30 / 7:30  
Stratified Swiss Teams . . . . . 7:30  
Non-LM 499er Swiss Teams . . . . . 7:30

## WEDNESDAY, MARCH 21

Two-Morning Open Swiss Teams . . . 9:30  
Two-Morning **Gold Rush** Swiss Teams 9:30  
CONTINUES 9:30 THURSDAY  
Azalea Side Game Series (2nd of 5). 9:30  
Earlybird NLM 49er and 499er Pairs 9:30  
Greystone Properties Knockout 1:30 & 7:30  
CONTINUES 1:30 & 7:30 THURSDAY  
Open Pairs . . . . . 1:30 & 7:30  
**Gold Rush** Pairs . . . . . 1:30 & 7:30  
Orchid Side Series (1st, 2nd of 4) 1:30 / 7:30  
Non-LM 49er & 499er Pairs . 1:30 / 7:30  
Stratified Board-a-Match Teams . . . 7:30  
Non-LM 499er Swiss Teams . . . . . 7:30

## THURSDAY, MARCH 22

Little White House Compact Knockout 9:30  
CONTINUES 9:30 FRIDAY

Azalea Side Game Series (3rd of 5) . 9:30  
Earlybird NLM 49er and 499er Pairs 9:30  
Dogwood Bracketed Swiss Teams 1:30 & 7:30  
Open Pairs . . . . . 1:30 & 7:30  
**Gold Rush** Pairs . . . . . 1:30 & 7:30  
Orchid Side Series (3rd, 4th of 4) 1:30 / 7:30  
Non-LM 49er & 499er Pairs . 1:30 / 7:30  
Stratified Board-a-Match Teams . . . 7:30  
Non-LM 499er Swiss Teams . . . . . 7:30

## FRIDAY, MARCH 23 - GOODWILL DAY

Two-Morning Open Swiss Teams . . . 9:30  
Two-Morning **Gold Rush** Swiss Teams 9:30  
CONTINUES 9:30 SATURDAY  
Azalea Side Game Series (4th of 5) . 9:30  
Earlybird NLM 49er and 499er Pairs 9:30  
Meadowlark Garden Knockout 1:30 & 7:30  
CONTINUES 1:30 & 7:30 SATURDAY  
Open Pairs . . . . . 1:30 & 7:30  
**Gold Rush** Pairs . . . . . 1:30 & 7:30  
Hydrangea Side Series  
(1st, 2nd of 5) . . . . . 1:30 / 7:30  
Non-LM 49er & 499er Pairs . 1:30 / 7:30  
Stratified Swiss Teams . . . . . 7:30  
Non-LM 499er Swiss Teams . . . . . 7:30

## SATURDAY, MARCH 24

Stratified Swiss Teams . . . . . 9:30  
Azalea Side Game Series (5th of 5) . 9:30  
Earlybird NLM 49er and 499er Pairs 9:30  
Robin Lake Bracketed  
Swiss Teams . . . . . 1:30 & 7:30  
Open Pairs (Open/3000/750) 1:30 & 7:30  
Hydrangea Side Series (3rd, 4th of 5)  
1:30 / 7:30  
Non-LM 49er & 499er Pairs . 1:30 / 7:30  
Stratified Board-a-Match Teams . . . 7:30  
Non-LM 499er Swiss Teams . . . . . 7:30

## SUNDAY, MARCH 25

Open Swiss Teams  
(Open/4000/1500) . . . . . 10:00 & TBA  
**Gold Rush** Swiss Teams . . . 10:00 & TBA  
Hydrangea Side Series (5th of 5) . . 10:00  
Non-LM 49er & 499er Pairs . . . . . 10:00

### Tournament Chairs

**Emory Whitaker**  
(478) 737-5273  
lewhitaker@cox.net

**Len Perkins**  
(478) 320-1194  
lenperkins@hotmail.com

### Partnerships

**Eldon Clayman** (828) 439-1283  
brdgbums@hci.net

\* Registration gifts & prizes for section tops & overall winners

\* Expert lectures Tues - Sat

\* Partnership desk open one hour before game time

\* Five Days of Gold Rush events for 0-750 players

\* Renowned Mid-Atlantic Non-Life Master program

• STRATS DETERMINED BY MP AVERAGES, BUT NO PLAYER MAY EXCEED THE EVENT'S LIMIT

• STRATS: GOLD RUSH: 300/750 (GOLD FOR 750 STRAT OVERALLS AND SECTION TOPS); 1-SESSION OPEN EVENTS, INCLUDING SIDE SERIES: 3000+/3000/750. 2-SESSION OPEN EVENTS: 3000+/3000/1500

• UNDER 500 MP EVENTS STRATIFIED AT DIRECTOR'S DISCRETION

MARCH 19-25, 2018 ♦ A District 7 Mid-Atlantic Regional



# Williamsburg DoubleTree by Hilton

50 Kingsmill Road ♦ Williamsburg, VA 23185 ♦ Free parking ♦ Free WiFi ♦ Indoor pool/Fitness center

Call 757-220-2500 and ask for the "BRIDGE" rate — an amazing \$87 deal! (plus tax)

## MONDAY, FEBRUARY 26

Kickoff KO .....1 & 7  
CONTINUES 1 & 7 TUESDAY  
Open Pairs 1500/3000/3000+ .....1 & 7  
Colonial GOLD RUSH Pairs .....1 & 7  
I/N Pairs 5/20/50 & 100/300/500 ..1/7  
Williamsburg Side Series  
(1st, 2nd of 6) .....1/7  
Stratified Swiss Teams .....7  
AFTERNOON GAMES BENEFIT ACBL Ed.  
FOUNDATION; EVENING GAMES BENEFIT  
CHESAPEAKE BAY FOUNDATION

## TUESDAY, FEBRUARY 27

Fort Story Compact KO .....9  
TWO 12-BOARD MATCHES; CONTINUES 9 AM WED  
Jamestown Morning Side Series  
(1st of 5) .....9  
I/N Pairs 5/20/50 & 100/300/500...9/1/7  
0-5 MP PLAYERS FREE TODAY  
Open Pairs 1500/3000/3000+ .....1 & 7  
Colonial II GOLD RUSH Pairs.....1 & 7  
Fort Eustis KO .....1 & 7  
CONTINUES 1 & 7 WEDNESDAY  
Williamsburg Side Series  
(3rd, 4th of 6) .....1/7  
Stratified Swiss Teams .....7

## WEDNESDAY, FEBRUARY 28

Early Bird Open Swiss  
1500/3000/3000+ .....9  
TWO SESSIONS; CONTINUES 9 AM THURSDAY  
Early Bird GOLD RUSH Swiss .....9  
TWO SESSIONS; CONTINUES 9 AM THURSDAY  
Jamestown Morning Side Series  
(2nd of 5) .....9  
I/N Pairs 5/20/50 & 100/300/500...9/1/7  
A/X Pairs 0-5000/5000+ .....1 & 7  
Mid-flight Pairs 0-1500/3000 .....1 & 7  
Colonial III GOLD RUSH Pairs.....1 & 7  
Langley KO.....1 & 7  
CONTINUES 1 & 7 THURSDAY

## WEDNESDAY, continued...

Williamsburg Side Series  
(5th, 6th of 6) .....1/7  
Stratified Swiss Teams .....7

## THURSDAY, MARCH 1

Jamestown Morning Side Series  
(3rd of 5) .....9  
I/N Pairs 5/20/50  
& 100/300/500 .....9/1/7  
A/X Swiss 0-5000/5000+ .....1 & 7  
Bracketed Flight B Swiss 0-3000 ..1 & 7  
NO PLAYER OVER 3000 MPs; 8 TEAMS PER  
BRACKET; 3 IN EACH WIN GOLD  
Lafayette Side Series (1st, 2nd of 4) 1 & 7

## FRIDAY, MARCH 2

Camp Peary Compact KO .....9  
TWO 12-BOARD MATCHES; CONTINUES 9 AM SAT.  
Jamestown Morning Side Series  
(4th of 5) .....9  
I/N Pairs 5/20/50 & 100/300/500 9/1/7  
A/X Pairs 0-5000/5000+ .....1 & 7  
Mid-flight Pairs 0-1500/3000 .....1 & 7  
Colonial IV GOLD RUSH Pairs .....1 & 7

- STRATS DETERMINED BY MP AVERAGES, BUT NO PLAYER MAY EXCEED EVENT LIMIT; <500 MP EVENT STRATS BASED ON ATTENDANCE
- OPEN EVENTS AND SIDE SERIES ARE STRATIFIED 0-750/750-3000/3000+, UNLESS NOTED
- GOLD RUSH EVENTS (0-300/300-750) AWARD GOLD POINTS TO OVERALL WINNERS AND 0-750 SECTION TOPS; RED POINTS TO 0-300 STRAT
- ALL KOs ARE BRACKETED, RANDOM DRAW AND INCLUDE 0-300 PLAYERS; ONE- AND TWO-BRACKET KOs ARE HANDICAPPED
- TO BE SEEDDED, PAIRS MUST BUY ENTRY NO LATER THAN 15 MIN. PRIOR TO GAME TIME

## Join us in historic Williamsburg!

### FRIDAY, continued...

Naval Weapons KO .....1 & 7  
CONTINUES 1 & 7 SATURDAY  
Lafayette Side Series (3rd, 4th of 4) ..1/7  
Stratified Swiss Teams .....7

### SATURDAY, MARCH 3

Jamestown Morning Side Series  
(5th of 5) .....9  
I/N Pairs 5/20/50 & 100/300/500..9/1/7  
Stratified Swiss Teams .....9  
Open Pairs 1500/3000/3000+ .....1 & 7  
Colonial V GOLD RUSH Pairs .....1 & 7  
Fort Monroe KO .....1 & 7  
CONTINUES 10 AM & TBA SUNDAY  
Yorktown Side Series (1st, 2nd of 4) ..1/7  
Stratified Swiss Teams .....7

### SUNDAY, MARCH 4

A/X/Y Swiss  
4000/6000/6000+ .....10 & TBA  
Bracketed Flight B Swiss  
0-3000.....10 & TBA  
NO PLAYER OVER 3000 MPs; 8 TEAMS PER  
BRACKET; 3 IN EACH WIN GOLD  
Yorktown Side Series (3rd, 4th of 4) ...10/2  
I/N Pairs 5/20/50 & 100/300/500...10/2



The Hilton is near Colonial Williamsburg, the largest living history museum in the U.S.

*Directions:*  
Located off Rt. 60, east of Colonial Williamsburg

*Plenty of free parking*

### Tournament Chairs

**Jane Farthing**  
[jane.farthing@gmail.com](mailto:jane.farthing@gmail.com)  
703-850-9635 c  
757-229-7275 h

**Karen Crowley**  
[Karen.Thorne.Crowley@gmail.com](mailto:Karen.Thorne.Crowley@gmail.com)  
678-371-6110 c

**Partnerships**  
**Ron Alldaffer**  
[ralldaffer@charter.net](mailto:ralldaffer@charter.net)  
757-613-9326 c  
757-279-0230 h

### Popular District 6 Intermediate/Novice Program

- Six Gold Rush events including morning Gold Rush Swiss
- Expert speakers before afternoon & evening games
- I/N partners guaranteed up to 1 hour before game time

**Fine Virginia hospitality every night!**

# America's Favorite Regional

GATLINBURG CONVENTION CENTER —PARKWAY & HISTORIC NATURE TRAIL

“/” indicates single session events. KOs are matched by random draw the first round and are guaranteed to finish in 3 or 4 rounds (no playback policy in effect). Compact KO teams limited to 4 members. All KO events are bracketed and include 0-500 MP players. The top bracket may be handicapped.

## MONDAY, APRIL 16

1 PM GAMES BENEFIT THE ACBL EDUCATIONAL FOUNDATION. 7 PM PAIR GAMES BENEFIT LOCAL CHARITY.  
**Millard Nachtwey Monday Open KOs** .....1 & 7  
 CONTINUE 1 & 7 TUESDAY.  
**Stratified Open (0-5000 & 5000+) Pairs** .....1 & 7  
**Stratified Mid-Flight (0-1500, 1500-3000) Pairs** .....1 & 7  
**Trillium Stratified 300/750 GOLD RUSH Pairs** (0-300 RED, 300-750 GOLD) .....1 & 7  
**Rocky Top Stratified Side Game Series** .....1 / 7 (1ST & 2ND OF 6 SESSIONS)  
 NLM 100/300/500 & 20/50/100 Stratified Pairs ...1 / 7  
**Clingman's Dome Dinner Bell Compact KOs** ...4:45  
 FIRST OF FOUR 12-BOARD MATCHES. FINISH APPROXIMATELY 6:30. CONTINUE 4:45 TUES, WED, THURS.  
 Strati-Flighted Swiss Teams .....7  
 NLM 100/300/500 Swiss Teams .....7  
 Stratified Board-a-Match Teams .....7

## TUESDAY, APRIL 17—1/N (players with less than 100 MP's) Special reception 4:30

**Gregory Bald (0-5000, 5000+) Swiss Teams** .9 am  
**Laurel Falls Mid-Flight (0-1500/1500-3000) Swiss Teams** .....9 am  
**Columbine GOLD RUSH (300/750) Swiss Teams** 9 am  
 GREGORY BALD, LAUREL FALLS, AND GOLD RUSH SWISS TEAMS ALL CONTINUE 9 AM WEDNESDAY.  
**Early Bird Stratified Open Pairs** .....9 am & 1  
**Laurel Falls Compact Morning KOs** .....9 am  
 TWO 12-BOARD MATCHES. CONTINUE 9 AM WEDNESDAY.  
**Elkmont Stratified Side Game Series** .....9 am  
 (1ST OF 5 SESSIONS)  
 Sunrise NLM 100/300/500 & 20/50/100  
 Stratified Pairs .....9 am  
**Stratified Open (0-5000, 5000+) Pairs** .....1 & 7  
**Stratified Mid-Flight (0-1500, 1500-3000) Pairs** .....1 & 7  
**Dogwood Stratified 300/750 GOLD RUSH Pairs** .....1 & 7  
**Gene Roy Tuesday Open KOs** .....1 & 7  
 CONTINUE 1 & 7 WEDNESDAY.  
**Rocky Top Stratified Side Game Series** .....1 / 7  
 (3RD & 4TH OF 6 SESSIONS)  
**0-5 Pairs (Free Today)** .....1 / 7  
 NLM 100/300/500 & 20/50/100 Stratified Pairs ...1 / 7  
**Susie Clayman Dinner Bell Compact KOs** ...4:45  
 FIRST OF FOUR 12-BOARD MATCHES. FINISH APPROXIMATELY 6:30. CONTINUE 4:45 WEDNESDAY, THURSDAY, FRIDAY.  
 Strati-Flighted Swiss Teams .....7

Stratified Board-a-Match Teams .....7  
 NLM 100/200/300 Swiss Teams .....7  
**WEDNESDAY, APRIL 18**

**The Sinks Open KOs** .....9 am  
 THREE SESSIONS. CONTINUE 9 AM THURSDAY & FRIDAY.  
**Elkmont Stratified Side Game Series** .....9 am  
 (2ND OF 5 SESSIONS)  
 Sunrise NLM 100/300/500 & 20/50/100  
 Stratified Pairs .....9 am  
**Early-Bird Stratified Open Pairs** .....9 am & 1  
**Wednesday Open KOs** .....1 & 7  
 CONTINUE 1 & 7 THURSDAY.  
**Stratified Open (0-5000, 5000+) Pairs** .....1 & 7  
**Stratified Mid-Flight (0-1500, 1500-3000) Pairs** .....1 & 7  
**Azalea Stratified 300/750 GOLD RUSH Pairs** ...1 & 7  
**Rocky Top Stratified Side Game Series** .....1 / 7  
 (5TH & 6TH OF 6 SESSIONS)  
 NLM 100/300/500 & 20/50/100 Stratified Pairs ...1 / 7  
**Judy Nolan Dinner Bell Compact KOs** .....4:45  
 FIRST OF FOUR 12-BOARD MATCHES. FINISH APPROXIMATELY 6:30. CONTINUE 4:45 THURSDAY, FRIDAY, SATURDAY.  
 Strati-Flighted Swiss Teams .....7  
 Stratified Board-a-Match Teams .....7  
 NLM 100/200/300 Swiss Teams .....7

## THURSDAY, APRIL 19

**Sugarlands (0-5000, 5000+) Swiss Teams** .9 am  
**Abrams Falls Mid-Flight (0-1500/1500-3000) Swiss Teams** .....9 am  
**Violets GOLD RUSH (300/750) Swiss Teams** 9 am  
 SUGARLANDS, ABRAMS FALLS, AND GOLD RUSH SWISS TEAMS ALL CONTINUE 9 AM FRIDAY.  
**Early-Bird Stratified Open Pairs** .....9 am & 1  
**Metcalf Bottoms Compact KOs** .....9 am  
 TWO 12-BOARD MATCHES. CONTINUE 9 AM FRIDAY  
**Elkmont Stratified Side Game Series** .....9 am  
 (3RD OF 5 SESSIONS)  
 Sunrise NLM 100/300/500 & 20/50/100  
 Stratified Pairs .....9 am  
**JoAnne Newby Thursday Open KOs** .....1 & 7  
 CONTINUE 1 & 7 FRIDAY.  
**Stratified Open (0-5000, 5000+) Pairs** .....1 & 7  
**Stratified Mid-Flight (0-1500, 1500-3000) Pairs** .....1 & 7  
**Rhododendron Stratified 300/750 GOLD RUSH Pairs** .....1 & 7  
**Mt. LeConte Stratified Side Game Series** .....1 / 7  
 (1ST & 2ND OF 4 SESSIONS)  
 NLM 100/300/500 & 20/50/100 Stratified Pairs ...1 / 7  
 Strati-Flighted Swiss Teams .....7  
 Stratified Board-a-Match Teams .....7  
 NLM 100/200/300 Swiss Teams .....7

## FRIDAY, APRIL 20 - Goodwill Day!

**Chimneys Compact Morning KOs** .....9 am  
 TWO 12-BOARD MATCHES. CONTINUE 9 AM SATURDAY.  
**Elkmont Stratified Side Game Series** .....9 am  
 (4TH OF 5 SESSIONS)

Sunrise NLM 100/300/500 & 20/50/100  
 Stratified Pairs .....9 am  
**Goodwill Fast Pairs** .....10 am & 1:30  
 (2 SESSIONS/24 BOARDS/5 MIN EA)  
**Marlene Wass Friday Open KOs** .....1 & 7  
 CONTINUE 1 & 7 SATURDAY.  
**Stratified Open (0-5000, 5000+) Pairs** .....1 & 7  
**Stratified Mid-Flight (0-1500, 1500-3000) Pairs** .....1 & 7  
**Iris Stratified 300/750 GOLD RUSH Pairs** ...1 & 7  
**Mt. LeConte Stratified Side Game Series** .....1 / 7  
 (3RD & 4TH OF 4 SESSIONS)  
 NLM 100/300/500 & 20/50/100 Stratified Pairs ...1 / 7  
 Strati-Flighted Swiss Teams .....7  
 Stratified Board-a-Match Teams .....7  
 NLM 100/200/300 Swiss Teams .....7

## SATURDAY, APRIL 21

**Grotto Falls Compact KOs** .....9 am & 1  
 FOUR 12-BOARD MATCHES. FINISH IN ONE DAY.  
**Elkmont Stratified Side Game Series** .....9 am  
 (FINAL SESSION)  
 Sunrise NLM 100/300/500 & 20/50/100  
 Stratified Pairs .....9 am  
**Smoky Mountain Fast Pairs** .....10 am & 1:30  
 (2 SESSIONS/24 BOARDS/5 MIN EA)  
**Two-Session Bracketed Swiss Teams** .....1 & 7  
 9 TEAM BRACKETS BY MPs— 4 TEAMS IN EACH BRACKET WIN GOLD (EXTRA TEAMS IN TOP BRACKET).  
**Stratified Open (0-5000, 5000+) Pairs** .....1 & 7  
**Stratified Mid-Flight (0-1500, 1500-3000) Pairs** .....1 & 7  
**Redbud Stratified 300/750 GOLD RUSH Pairs** ...1 & 7  
**Newfound Gap Stratified Side Game Series** .....1 / 7  
 (1ST & 2ND OF 4 SESSIONS)  
 NLM 100/300/500 & 20/50/100 Stratified Pairs ...1 / 7  
 Stratified Board-a-Match Teams .....7

## SUNDAY, APRIL 22 (SUNDAY SWISS INCLUDES LUNCH)

**Two-Session Geoff Greene Bracketed Swiss Teams** .....10 am/2  
 9 TEAM BRACKETS BY MPs— 4 TEAMS IN EACH BRACKET WIN GOLD (EXTRA TEAMS IN TOP BRACKET).  
**Newfound Gap Stratified Side Game Series** .10 am/2  
 (3RD & 4TH OF 4 SESSIONS)  
 NLM 100/300/500 & 20/50/100 Stratified Pairs 10 am/2  
 NLM 100/300/500 Stratified Swiss Teams ..10 am/2

Must play in 2+ sessions in Pairs events for Gold.

Unless otherwise indicated, masterpoint ranges for stratified events are 3000+/750-3000/0-750. Strati-Flighted events are A=6000+, X=4000-6000, Y=0-4000, B/C/D=1500-3000/750-1500/0-750.

Single session pairs are always accommodated. 1/N partners are guaranteed one hour before game time.

All events are stratified by average MPs. (Exception: When an event has an upper MP limit, all players must have fewer than that number of masterpoints.) Under 500 MP events are stratified at director's discretion.

Evening start time 7 p.m., 1st Overall Prizes, Strata Tops, Intermediate/Novice Trophies, Registration & Daily Gifts, Daily Bulletins, Drink & Food Chits

♦ APRIL 16-22, 2018 ♦ A District 7 Mid-Atlantic Regional ♥



### **TOURNAMENT CHAIRS**

Julia & Pete Misslin: 423-884-3550  
pmisslin@tds.net

### **PARTNERSHIPS**

Dr. Eldon Clayman: 828-439-1283  
brdgbums@gmail.com

### **INTERMEDIATE/NOVICE CHAIR**

Doris Pennala: 248-293-9798  
doryannp@yahoo.com

### **Online Partnership Desk:**

<http://bridgefinesse.com/>  
PDeskGatlinburg\_2018.html or  
<http://bit.ly/2rR8f4b>

### **Fast Results:**

Email your ACBL# (in subject line) to FastResultsHelpDesk@gmail.com. If you want a headshot photo linked to your name so it will appear in the online results page, send the photo to Help@TheCommonGame.com, with your ACBL# in the subject line.

**Entry Fees:** \$11/person/session  
(\$4/PERSON/SESSION ADDITIONAL FOR NON OR UNPAID ACBL MEMBERS)

**Credit Card Purchases:** Entry vouchers may be purchased using a debit card or major credit card (VISA, MasterCard, Discover, AMEX). See the *Daily Bulletin* for details.

- ◆ Times pm except where indicated.
- ◆ **Gold Point Events** in **Bold** Letters.

### **EASYBRIDGE! Accreditation**

9am-noon, Wed Apr 18  
Convention Center Hall 1

### **BECOME A CLUB DIRECTOR**

Course offered Fri Apr 12/Sun Apr 15  
Convention Center Meeting Room 5

For information on the above courses, contact: Priscilla Smith, 770-973-7717

### **TAP Seminar: Apr 14-15-16**

Tues-Wed-Thurs 8:30am-noon  
Meeting Room 5

Register at [www.acbl.org/tap](http://www.acbl.org/tap)

### **"PERFUME/COLOGNE" FREE**

### **World-Class Speakers**

Tues-Sat: 12:15 & 6:15  
in Hall 1 in the I/N area

### **GATLINBURGREGIONAL.ORG**

for up-to-date info, maps and Host & Sponsor hotel site listings

## **Bethesda, MD** **Regional Winners** **July 3-9, 2017**

### **TOP POINT WINNERS**

#### **District 6 Players**

- 1 113.32 Brad Theurer
- 2 103.59 William Cole
- 3 99.02 Mark Chen
- 4 80.45 Lyle Poe Jr
- 5 75.57 Sylvia Shi
- 6 75.19 Robert Bell
- 7 73.43 Lou Reich
- 8 73.32 Steve Robinson
- 73.32 Peter Boyd
- 10 70.21 Daniel Korbelt

#### **District 6 Players <3000 MPs**

- 1 53.39 Alexander Prairie
- 2 43.13 Carole Banks
- 3 40.20 Hadi Abushakra
- 4 39.00 Debnarayan Dhar
- 5 38.28 James Beller
- 38.28 Albert Lauber
- 38.28 Jay Cherlow
- 8 36.80 Tobi Bear
- 36.80 Susan Klaber
- 10 36.27 Betty Ladd
- 36.27 Mike Ladd

#### **District 6 Players <750 MPs**

- 1 36.80 Tobi Bear
- 2 31.49 Yizhong Fan
- 3 27.76 Charles Dearolf
- 4 26.34 Barry Tash
- 5 24.64 Gale Greenbaum
- 6 23.01 Bud Morgan
- 23.01 Alan Munro
- 8 22.53 Douglas Lahammer
- 9 21.16 Jess Feinman
- 10 21.11 Jim Dickson

#### **District 6 Players <300 MPs**

- 1 15.32 Yuan-Jye Liu
- 2 14.06 Ivy Broder
- 3 12.83 Elizabeth Jones
- 4 11.73 Charles Van Horn
- 5 11.58 Janet McGlynn
- 6 11.35 Joia Hertz
- 7 11.09 James Deckant
- 8 10.59 William Davis
- 9 10.03 Catalina Rivas
- 10 8.11 Alice Burin
- 8.11 David Dunston

## **Hunt Valley, MD** **Regional Winners** **August 7-13, 2017**

### **TOP POINT WINNERS**

#### **District 6 Players**

- 1 119.53 William Cole
- 2 112.06 Steve Robinson
- 3 107.35 Fred King
- 4 95.35 Brad Theurer
- 5 76.54 Muh-Sha Crawford
- 6 75.21 Robert Bell
- 7 72.76 Lyle Poe Jr
- 8 72.38 Mark Laken
- 9 72.35 Martin Graf
- 72.35 Andrew Gofreed
- 72.35 Mark Shaw

#### **District 6 Players <3000 MPs**

- 1 63.13 David Grabiner
- 63.13 Art McCann
- 3 51.92 John Becker
- 4 50.61 Tony Robson
- 50.61 Georgette Weiss
- 6 48.87 Edward Rothenheber
- 7 46.88 Carol Mumma
- 8 46.78 John Powell
- 9 43.81 Scott Waldron
- 10 43.65 Dave Tonnesen

#### **District 6 Players <750 MPs**

- 1 28.44 Elizabeth Fletcher
- 2 27.15 Douglas Lahammer
- 3 25.06 Barbara Pierce
- 4 23.55 Jim Dickson
- 5 22.76 Brian Sutton
- 6 20.92 Charlie Wermin
- 7 19.24 Craig Pritzker
- 8 19.18 Cynthia Veidt
- 19.18 Katherine Cook
- 10 18.44 Thad Uehling

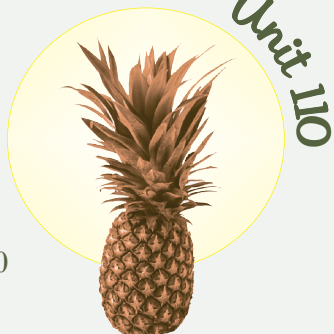
#### **District 6 Players <300 MPs**

- 1 23.55 Jim Dickson
- 2 19.24 Craig Pritzker
- 3 18.00 Amanda Stewart
- 4 17.21 Dave Hall
- 5 17.03 Marcia Goggans
- 6 15.57 Brian Mc Namara
- 7 14.45 Herb Lichtenstein
- 8 13.77 Janet McGlynn
- 9 12.80 Freddie Baldwin
- 10 11.55 Lisa Eklund

# Williamsburg Winter Sectional

**DOUBLETREE BY HILTON**

50 Kingsmill Road • 757-220-2500



## Friday, November 10

Stratified Pairs .....10:00 am & 2:30 pm  
(0-300, 300-1250, 1250+ MPs—Average points) *(single sessions)*

Newcomer/99er Pairs *(single sessions) (if attendance warrants)* 10:00 am & 2:30 pm

## Saturday, November 11

Stratified Pairs (0-300, 300-1250, 1250+ MPs —Average points) .....10:00 am

Newcomer/99er Pairs *(if attendance warrants)* .....10:00 am

Stratified Pairs/Board-A-Match Teams—*Two chances to win!* .....2:30 pm  
(0-300, 300-1250, 1250+) Stratified pairs game. At the same time, each pair is teamed according to masterpoints for a BAM.

## Sunday, November 12—Including lunch!

Bracketed Swiss Teams .....10:00 am & TBA  
*(Bracketed by average points. 7 rounds of 7 boards)*

**Entry Fees:** \$10 per person per session; \$88 *(includes lunch)* per Swiss Team  
\$3 additional/person/session for non or unpaid ACBL members

### Tournament Chair

**Jane Farthing:** jane.farthing@gmail.com, 703-850-9635

### Partnership Chair

**Ron Alldaffer:** ralldaffer@charter.net, 757-279-0230

**Williamsburg Hospitality!**

**Directions:** Located off Rt. 60, east of Colonial Williamsburg.

## District Six Honor Roll: Toronto, Ontario NABC, Summer, 2017

### TOP TEN LISTS

#### District Six Members

1	253.85	Beth Palmer
2	246.52	William Pettis
3	229.41	Ai-Tai Lo
4	197.21	William Cole
5	173.31	Sylvia Shi
6	118.40	R Jay Becker
7	110.91	Daniel Korbel
8	93.11	Noble Shore
9	78.06	Robert Bell
10	75.78	Lou Reich

#### District Six Members with 0-3000 MPs

1	55.25	Ann Acheson
	55.25	George Parkins
3	44.94	John McAllister
4	38.27	Jerry Nolte
5	37.15	Kenneth Hopke
6	36.04	Elizabeth Nolte
7	31.98	Eileen Inglesby-Houghton
8	31.50	Jeffrey Schwartz
9	30.38	Zachary Madden
10	28.00	David Hurst

#### District Six Members with 0-750 MPs

1	31.50	Jeffrey Schwartz
2	28.00	David Hurst
3	22.01	Chen Zhao
4	18.90	Barry Ko
5	16.86	William Lowry
6	13.82	Sam Pal
7	13.78	Garry Grossman
8	11.97	Michael Corrigan
9	11.97	Joseph Lebaron
10	9.95	Atish Sanyal
	9.95	Arvind Bhand

#### District Six Members with 0-300 MPs

1	22.01	Chen Zhao
2	16.86	William Lowry
3	9.95	Atish Sanyal
	9.95	Arvind Bhand
5	9.26	Alexander Stille
6	7.56	Carole Stringer
	7.56	Robbie Lloyd
8	7.16	Maxwell Burns
9	6.72	Kathleen Parkins
10	5.81	Barbara Devaney

**OVERALL PLACINGS  
IN NATIONALLY RATED EVENTS**

*Special congratulations to our  
1st place overall winners:*

**Ai-Tai Lo, William Cole, William  
Pettis, and Beth Palmer in the  
Roth Open Swiss Teams**

**MOREHEAD GRAND NATIONAL TEAMS –  
CHAMPIONSHIP FLIGHT**

- 3/4 Noble Shore, Germantown MD;  
Michael Gill, Columbia MD;  
Sylvia Shi, Rockville MD;  
Beth Palmer, Chevy Chase MD;  
William Pettis, Silver Spring MD;  
Ai-Tai Lo, Reston VA

**GOLDMAN GRAND NATIONAL TEAMS –  
FLIGHT A**

- 5/8 Ellen Cherniavsky, Silver Spring MD;  
Robin Taylor, Gaithersburg MD;  
David Genne, Washington DC;  
Clyde Kruskal, College Park MD;  
Hal Hindman, Centreville VA;  
Kenton Schoen, Alexandria VA

**VON ZEDTWITZ LIFE MASTER PAIRS**

- 47 Fred King, Mc Lean VA

**BRUCE 0-6000 LIFE MASTER PAIRS**

- 12 Jay Cherlow, Arlington VA;  
Albert Lauber, Washington DC

**YOUNG 0-2500 PAIRS**

- 15 Eric Gettleman, Ellicott City MD  
35 Eileen Inglesby-Houghton,  
Silver Spring MD;  
Steven Fox, Kensington MD

**0-10,000 NABC PAIRS**

- 23 Mark Laken, Glyndon MD;  
Stan Schenker, Herndon VA

**WAGAR WOMEN'S PAIRS**

- 3 Sylvia Shi, Rockville MD

**WERNHER OPEN PAIRS**

- 26 Chen Zhao, College Park MD  
28 Steve Robinson, Arlington VA;  
Peter Boyd, Darnestown MD  
40 Mark Dahl, Richmond VA

*continued on pg. 10, column 3*

♠ **Charlottesville, VA** ♣ **DECEMBER 8-10, 2017** ♦

# Shenandoah Valley Winter Sectional



**Comfort Inn Monticello**

2097 Inn Dr, Charlottesville, VA 22911

**Reservations:** 434-977-3300

**Directions** From I-64 Eastbound: Exit 124 (Shadwell): Make a right at the light and take an immediate left by the island. Follow the paved driveway to the top of the hill.

From I-64 Westbound: Make a left at the light, pass the overpass and make a left at the island. Follow the paved driveway to the top of the hill.

From Route 29: Take the ramp to 250 East Bypass, drive 5 miles on 250 East Bypass, pass the overpass of I-64, stay on the 250 East Bypass and make a left at the island. Follow the paved driveway to the top of the hill.

*Non-Smoking  
Tournament with  
Hospitality Breaks*

*Free coffee, soft drinks,  
and more ...*

**Entries**

*\$10.00/person  
for pair games;  
\$100.00/team—Includes  
light lunch between  
sessions; \$3 additional  
per person for non or  
unpaid ACBL members*

**Tournament Chairs**

**Betsy Ruehl**  
540-942-3667  
truehl@ntelos.net

**Steve Rothman**  
434-296-1714

## SCHEDULE OF EVENTS

### FRIDAY, DECEMBER 8

10:30 AM . . . Open Stratified Pairs or 199er Pairs  
The entry for these games is \$11. 40% more masterpoints awarded helps fund the GNTs & NAPs

3:30 PM . . . Open Stratified Pairs or 199er Pairs

### SATURDAY, DECEMBER 9

10:30 AM . . . Open Stratified Pairs or 199er Pairs  
The entry for these games is \$11. 40% more masterpoints awarded helps fund the GNTs & NAPs

3:30 PM . . . Open Stratified Pairs or 199er Pairs

**Friday and Saturday Stratification Limits**

0-750, 750-2000, 2000+ (199er at Director's discretion)  
Stratification of pairs by average masterpoints. —No individual may exceed the event's upper limit.

### SUNDAY, DECEMBER 10

10:30 AM & TBA . . . . . Bracketed Swiss Teams  
8 teams in each bracket, 7 rounds, play-through

56<sup>th</sup> Annual

~ PRESIDENTIAL TOURNAMENT ~

at the MARGARET SCHWEINHAUT SENIOR CENTER

1000 Forest Glen Rd, Silver Spring, MD (Friday-Sunday only)

THURSDAY, JANUARY 4

- ♣ StrataFlighted A/X (unlim/2000) & B/C/D (1000/500/300) Pairs . . . 11:15am  
Rockville Duplicate Bridge Club, 301-503-3348 (Mark Lavine) **NO ENTRY TILL 11AM**  
St. James Episcopal Church, 11815 Seven Locks Rd., Rockville
- ♦ StrataFlighted A/X (unlim/4000) & B/C/D (2500/1500/750) Pairs (both sites), Intermediate/Novice Pairs (500/300/100) (Ohr Kodesh), Stratified 199er Pairs (200/100/50) (KOCH), & 0-20 Pairs (both sites)  
Beth El Hebrew Congregation, 3830 Seminary Road, Alexandria 7:00pm  
Ohr Kodesh Congregation, 8300 Meadowbrook Ln., Chevy Chase 7:30pm  
No outside food allowed. I-495 to Connecticut Ave. S. 4<sup>th</sup> light left E-W Hwy 410. Left Meadowbrook Ln. 1<sup>st</sup> left Freyman Dr. Parking lot on left.

FRIDAY, JANUARY 5

- ♣ \*StrataFlighted A/X (unlim/4000) & B/C/D Pairs (2500/1500/750) (single sessions) . . . 11:00am, 3:00pm
- ♦ **Relaxed & Fun Stratified IMP Pairs/Teams** (unlim/2500/750) . . . . . 7:30pm  
—2 Chances to Win!— This innovative game moves like a pair game & scores the better of your IMP pair & team game. Come as a team of 4 or as a pair & we'll find you teammates.
- ♠ Intermediate/Novice Pairs (500/300/100) & 49er Pairs (50/20/5) (single sessions) . . 11am, 3pm, 7:30pm



New Life Master

Party—between sessions

SATURDAY, JANUARY 6

—Lunch available for purchase—

Win upgraded (more) masterpoints today! (\$1 additional fee supports Grass Roots events.)

- ♣ \*StrataFlighted A/X (unlim/4000) & B/C/D Pairs (2500/1500/750) (single sessions) . . . . . 11:00am, 3:30pm
- ♦ Intermediate/Novice Pairs (500/300/100) & 49er Pairs (50/20/5) (single sessions) . . . . . 11:00am, 3:30pm

SUNDAY, JANUARY 7

WBL Trophy Race Winners' Presentation —Lunch available for purchase—

- ♠ Flights A/X (unlim/5000) Swiss Teams (2 session playthrough w/break) . . . . . 11:00am & TBA
- ♣ Bracketed Flight B Teams (no single player >3000) (2 session playthrough w/break) . . 11:00am & TBA  
B Teams Bracketed by total team masterpoints; three overall places in each.
- ♦ 500/300/100 Swiss Teams, VPs (single sessions) . . . . . 11:00am, 3:00pm
- ♣ **Lots of Intermediate & Novice Events w/ Silver Points! ♥0-5 MP play FREE! ♠**  
Separate I/N events & strata as advertised as attendance allows. (Director's discretion.)

Hospitality includes snacks, drinks, & Friday lunch & evening desserts. Sat. & Sun. lunch available for purchase. Tournament Chair: Brad Theurer, 301-527-8819, [bathuerer256@gmail.com](mailto:bathuerer256@gmail.com); Volunteer Coordinator: Barbara Summers, 301-598-5838, [jimbarb1184@aol.com](mailto:jimbarb1184@aol.com); Partnerships: Barbara Doran, 301-608-0347, [barb.doran@verizon.net](mailto:barb.doran@verizon.net), Online Partnership Desk available.

\*StrataFlighted if attendance warrants—otherwise combined into Stratified Pairs (unlim/2500/750) Stratification by avg. masterpoints of the team or pair. No individual may exceed the event's upper limit.

Directions to the Margaret Schweinhaut Senior Center, 1000 Forest Glen Rd, Silver Spring, MD: I-495 to Georgia Avenue North (toward Wheaton). 1<sup>st</sup> light right on Forest Glen Rd. The Center is .7 mile on right.



2018...

Cheers to a New Year & a New Deal!

Toronto Overalls, cont. from p 9

- 42 Lyle Poe Jr, Ellicott City MD; Brad Theurer, Gaithersburg MD

FREEMAN MIXED B-A-M TEAMS

- 8 Beth Palmer, Chevy Chase MD; William Cole, Silver Spring MD
- 9 Robert Hopkins Jr - Joan Lewis, Arlington VA
- 14 William Pettis, Chevy Chase MD

SPINGOLD KNOCKOUT TEAMS

- 17/32 John McAllister, Charlottesville VA

0-6000 MINI-SPINGOLD KNOCKOUT TEAMS

- 3/4 Cecily Kohler, Washington DC; Andy Avery
- 9/16 Zachary Madden, Bethesda MD

0-2500 MINI-SPINGOLD KNOCKOUT TEAMS

- 3/4 Kenneth Hopke, Annandale VA; Jerry Nolte - Elizabeth Nolte, Oak Hill VA
- 9/16 Ryan Connors, Alexandria VA

BEAN RED RIBBON PAIRS

- 8 Barry Ko, Arlington VA
- 21 Jim Gaarder, Columbia MD; Jimmy Ritzenberg, Bethesda MD
- 26 Ryan Connors, Alexandria VA
- 28 Karen Kreutzberg - Thomas Sanzone, Blacksburg VA

ROTH OPEN SWISS TEAMS

- 1 **Ai-Tai Lo**, Reston VA; **William Cole - William Pettis**, Silver Spring MD; **Beth Palmer**, Chevy Chase MD

- 15 Daniel Korbel, Rockville MD
- 26 Peter Boyd, Darnestown MD; Steve Robinson, Arlington VA
- 31 Mark Dahl, Richmond VA

0-10,000 MIXED SWISS TEAMS

- 7 Sylvia Shi, Rockville MD
- 8 Jeffrey Schwartz - Annie Schwartz, Fairfax VA; David Fleischer, Alexandria VA; Eileen Inglesby-Houghton, Silver Spring MD
- 10 Monique Smith, Arlington VA; Linda Marshall, Bethesda MD; David Ruderman, Burtonsville MD; Merril Hirsh, Washington DC

## Looking Ahead from Toronto to San Diego

—REPORT FROM DISTRICT DIRECTOR MARGOT HENNINGS,

Margot10bridge@cox.net

Once again, as I did following Kansas City in the Spring, in this report, I will be looking forward from one NABC to the next in terms of ACBL Board of Directors (BOD) activity—this time from Toronto to San Diego. Your new CEO, Bahar Gidwani, is moving at lightning speed to look at all aspects of the ACBL from Membership to Marketing; from analyzing declining Tournament attendance to refining Tournament schedules and relaxing regulations to allowing experimental new events; from proposing strength-based ratings for players to simplifying the Masterpoint Award Chart. So, what happened in Toronto has in many instances been superseded by fast-paced activities that point to lots of decisions on the line in San Diego. Formal decisions affecting the rules and regulations of the organization are dealt with by the BOD at their three annual meetings held in conjunction with the three NABCs in the Spring, Summer, and Fall, and this Fall, our schedule is chock-full. For those less interested in the politics, rules and regulations, or finances of the organization, be sure not to skip the paragraphs at the end of this report that discuss proposed new ideas to work with clubs, creative experimental events that we are hoping to try in conjunction with regionals, and other tournament-related items. Ok, you can't quite ever get rid of the politics, but it should prove interesting reading nonetheless. ☺

Before I digress too much from what happened in Toronto, let's recap:

### **Congratulations to D6 Members on Top NABC Event Finishes in Toronto!**

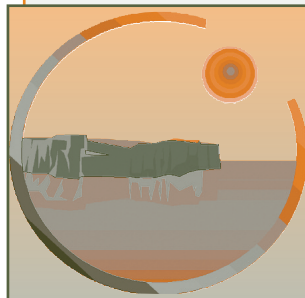
D6 winners and top finishers in NABC events are listed in the Honor Roll on page 9 of this issue of *TableTALK*. Special kudos go to Bill Cole, Ai-Tai Lo, Beth Palmer, and Bill Pettis in their four-handed win in the final weekend's three-day Roth Swiss—that's six intense sessions, playing every hand of every session. A very notable accomplishment!

### **Toronto as a Tournament Venue**

I have long loved this city ever since spending two summers at UT studying Russian as an undergraduate. It has obviously changed vastly since the mid-1970s, but retains its ethnic character and pedestrian-friendly walkways, both contributing to a great network of terrific, inexpensive, and easily accessible restaurants near the Convention

continued on pg. 12, column 3

♠ Norfolk/Va. Beach, VA ♣ JANUARY 5-7, 2018 ♦



## Norfolk/ Virginia Beach Winter Sectional

**Unit 146 Bridge Center**

4966 Euclid Road, Virginia Beach, VA 23462

—Stratification based on partnership/team average—

**Directions:** Take North Witchduck exit off I-264. After 4/10 mile, turn right onto Cleveland Street. After 3/10 mile, turn diagonally right on Euclid Road. The Bridge Center is at 4966 Euclid Road, 3/10 mile on the left, in the U-shaped Pocahontas Office Park.

**Nearby Hotels:** **Hampton Inn**, 5793 Greenwich Road, Virginia Beach, 757-490-9800  
**Motel 6**, 4760 Euclid Road, Virginia Beach, 757-499-1935

*Fri & Sat PM games regionally rated—extra points, no extra money.*

### **Friday, January 5**

*(Light lunch served between sessions)*

Stratified Pairs (single sessions) . . . . .10:30 AM & 2:30 PM

(0-750, 750-1500, 1500+ MPs)

Novice Pairs (single sessions) . . .10:30 AM & 2:30 PM

(0-100, 100-200, 200-NLM up to 500)

### **Saturday, January 6**

*(Light lunch served between sessions)*

Stratified Pairs (0-750, 750-1500, 1500+ MPs) 10:30 AM

Novice Pairs . . . . .10:30 AM

(0-100, 100-200, 200-NLM up to 500)

Bracketed Pairs/Board-A-Match Teams . . . . .2:30 PM

(Play in a stratified pairs game. At the same time, each pair is teamed according to MP (highest to lowest). *Two chances to win!*)

### **Sunday, January 7**

Stratified Swiss Teams (0-750, 750-1500, 1500+ MPs) . . . . .10:30 AM & TBA

Novice Stratified Swiss Teams (0-100, 100-200, 200-NLM up to 500) . .10:30 AM & TBA

**Entries:** \$10 per person per pairs session; \$84 per team (includes meal between sessions for 4 team members). Additional \$3 for unpaid or non-ACBL members.

**Great Hospitality:** Includes free snacks, sodas and coffee for all events.

— Strata may be adjusted at director's discretion based on attendance—

#### **Tournament Co-Chairs**

**Joan Park Buckle**

757-621-1888,

joanparkbuckle@gmail.com

**Beth Rafferty**, 804-512-3225,

raffertyb4705@gmail.com

#### **Partnership Chair**

**Brian Boyce**

757-434-0792,

brian@bfboyce.com

***Richmond Winter Sectional—NEW LOCATION!***

—30% Bigger Playing Area—

—Plenty of Free Parking—

—Same Famous Richmond Hospitality—

**ACCA Temple:** 1712 Bellevue Avenue

Separate Friendly Bridge 0-300 games Fri. & Sat.

—**NEW Morning Start Times**—

**FRIDAY, JANUARY 12** *Newcomer Lecture* . . . 9:00 AM  
 RBA Friendly Bridge 0-300 game . . . . .10:00 AM / 3:00 PM  
 Stratified Open Pairs (750/2000/2000+) . . . . .10:00 AM  
 Stratified Open Pairs (750/2000/2000+) . . . . . 3:00 PM

**SATURDAY, JANUARY 13** *Newcomer Lecture* . . 9:00 AM  
 RBA Friendly Bridge 0-300 game . . . . .10:00 AM  
 Stratified Open Pairs (750/2000/2000+) . . . . .10:00 AM  
 Bracketed Pairs/Board-a-Match Teams . . . . . 3:00 PM  
*A, B, and C play in sectional pairs game. At the same time, each pair is teamed according to MP (highest to lowest). Two chances to win!!*

**SUNDAY, JANUARY 14**—*lunch provided*  
*Free coffee, bagels and donuts at 9:30 AM*  
 Bracketed Swiss Teams . . . . .10:00 AM  
 8 teams in each bracket, seven rounds, play through

**DIRECTIONS TO ACCA TEMPLE SHRINE,** 1712 Bellevue Ave.:  
From the West – take I-64 East to I-95 North. Take first exit (Exit 80 Hermitage/Lakeside). Stay straight on the ramp to the light. Turn left onto Hermitage Road. Go .2 of a mile and then turn right onto Bellevue Road. Turn right into the parking lot. From the North – Take I-95 South to Exit 82 unto Route 301 towards Chamberlayne Ave. Go 1.4 miles and turn right onto Westwood Avenue. Go .9 miles and turn left onto Hermitage Road. Go .2 mile and turn right onto Bellevue. From the South – Take I-95 North. Merge with I-64 West and I-95 North. Stay on I-95 north towards Washington. Take Exit 80 (see above). From the East – Take I-64 West. Merge with I-95 N. Stay on I-95 north towards Washington and take Exit 80 (see above).



**FAMOUS RICHMOND HOSPITALITY**

Free coffee, snacks and soda available each session

**TOURNAMENT CHAIRS**

Barry & Winnie Fratkin  
 fratco@mac.com  
 804-741-6782 (H)  
 804-837-6782 (C)

**PARTNERSHIP CHAIR**

Anne Atwood  
 bsaintsd@aol.com,  
 804-784-2654

**Kansas City Report, cont. from p 11**

Center. And the Convention Center! This was one of the best if not THE best venue for an NABC in my memory, with spacious, well-lit playing rooms with windows and skylights for natural light. A contract for another Summer NABC is being worked on—the first available Summer slot is 2024, now that Chicago was approved in Toronto for Summer 2023 (along with Phoenix in lieu of Orlando in Fall 2022).

***Toronto meetings plus a 'Hail' & 'Farewell'***

As discussed and then voted on during the past several BOD meetings, for the first time these meetings were held on days that overlapped with bridge play. Board members arrived late Tuesday and met from Wednesday through Saturday, allowing no two-session play until Sunday, following the Board of Governors (BOG) meeting that morning. The net effect of this decision is that it cut the cost of our meetings from what had been seven days to only five. This is a policy that will continue to be examined for additional cost savings, albeit with exceptions such as the occurrence of Thanksgiving in the middle of our meetings in the Fall.

The beginning of the meetings saw a farewell reception for Robert Hartman, our outgoing CEO (paid for by those who attended), followed by a transition of leadership to Bahar Gidwani with a dynamic presentation to both the BOD and the BOG of an aggressive path forward.

***Key Accomplishments in Toronto***

• As of January 1, 2018, use of the “stop card” in the bid box is mandated to cease in tournament

**DISTRICT 6 STAC**

(Sectional Tournament at Clubs)

**Dec 11-17, Jan 22-28, and May 7-13**

- ♣ Win sectionally rated silver points at your favorite local clubs.
- ♣ Huge overall masterpoint awards; the more tables in play during any one session, the greater the awards.
- ♣ Clubs in MD, VA, and DE participate. Call any club for details, including entry fees and partnership arrangements.
- ♣ District 6 STaC Coordinator:

**Don Berman**  
 don.berman@verizon.net

♣ Baltimore, MD ♦ FEB 2-4, 2018 ♥

The **MARYLAND BRIDGE ASSOCIATION** presents

## BALTIMORE'S SUPERBOWL WEEKEND

at the

### AMERICAN LEGION POST 109

♣ 1610 Sulphur Spring Rd., Halethorpe, MD 21227 ♣

**Directions:** See [www.americanlegionpost109.org](http://www.americanlegionpost109.org) for detailed directions and map. Please note that there are two Sulphur Spring Roads here and do NOT turn onto Dewitt. If you're lost, call 410-242-5781.

**Our Schedule** .....Including free coffee, soft drinks and refreshments and a Lecture with Game Analysis after the Saturday Morning Game! For the Sunday Swiss, sandwiches are available for purchase (partially subsidized by Maryland Bridge Association)

Catch the Silver!



### FRIDAY, February 2

**Stratified Grass Roots Pairs:** 0-1500/3000/3000+ MPs .....1 pm  
(The entry for this game is \$1 additional, 40% more masterpoints awarded! Helps fund the GNTs and NAPs)

**Non-Life Master 499er Pairs:** 0-100/200/500 MPs .....1 pm  
**Triple Nickel Swiss:** (5 rounds, 5 boards, 5 minutes a board) .....7 pm

### SATURDAY, February 3

**Stratified Pairs:** 0-1500/3000/3000+ MPs (single sessions) ..10 am & 3 pm  
**Non-Life Master 499er Pairs:** 0-100/200/500 MPs .....10 am & 3 pm  
(single sessions)

#### TOURNAMENT CHAIR

**Ed Rothenheber**

443-280-0828

rothenheber\_ed@bah.com

#### PARTNERSHIPS

**Pat Murty**

410-323-6206

129firef@comcast.net

Surprises!



### SUNDAY, February 4

**Stratified Swiss Teams** . . . .10:00 am - Playthru

Stratified by average of total MPs

**I/N Swiss Teams** . . . . .10:00 am & 2:00 pm  
0-5/20/50 MPs & 100/200/500 MPs  
2 single session events

**All Pair Events  
are Single Sessions**



play. Although not incumbent on club owners to follow suit and extend this regulation to their games, many have already taken the stop card out of the bid box, so that you can get used to "practicing" waiting before bidding when a "skip bid" is made in front of you. **Alert:** Eliminating the stop card by no means allows fast passes or fast bids—you must maintain the table tempo.

• As you have been reading in your monthly *ACBL Bulletin*, a new series of convention charts currently designated as red, yellow, green and white in descending order of complexity was presented by Competitions & Conventions (C&C) Committee Members Danny Sprung and Tom Carmichael. Adopting these with whatever changes have been proposed following more Member review since Toronto is on the BOD agenda for San Diego and should go a long way in making duplicate bridge appear "easier" and more accessible for the social bridge players who have expressed that it is intimidating to make the transition from their social games to ours.

• Significant revisions were approved for the Code of Disciplinary Regulations (CDR) following months of hard work by Appeals and Charges Chair Georgia Heth and In-House Counsel Linda Dunn, with participation from the entire BOD. The CDR was overly complex and a daunting task to try and understand for anyone—primarily Unit and District Recorders and Appeals Committees. Changes were made to simplify the document (no more need for formal written motions, which are frequently detailed and time-consuming) to make it more "readable" as well as to include the use of negotiated resolutions, commonly known as plea bargains. If a reasonable agreed-upon resolution can be reached, this will greatly reduce the work of HQ staff in supporting Units and Districts in this area and virtually eliminate all appeals. A few years ago, stipulations for the mandatory removal of masterpoints in conjunction with specific probation and/or suspension penalties were added. These have now been removed.

• Teachers may now use prepared lesson plans for regular club games with a masterpoint limit of 20 or less, and award ACBL masterpoints as long as a minimum of 6 boards are played in conjunction with the lesson.

#### Financial Matters

The ACBL expects to break even at the end of the year. "New" expenses are being offset by budgeted items that have been cut:

• A new \$450K Customer Relations Management (CRM) system will replace the outdated AS400 servers and is much-needed to provide better financial recordkeeping, better customer service, and a long-overdue technology change.

• Penalties (\$80K) were incurred in breaking the contract to return to Orlando in 2022 but

## NVBA WINTER SECTIONAL

The Arlington/Fairfax Elks Lodge #2188  
8421 Arlington Boulevard, Fairfax, VA ♦ 703-560-2213

### THURSDAY, FEBRUARY 15

STRATIFIED OPEN PAIRS (2000+/2000/750) or 500/300/100 PAIRS .....10:30 a.m.

*Norma's Game: K of C Hall (KOCH), 5115 Little Falls Rd., Arlington, VA, 703-892-1292*

*Evening games at: NVBA: Note special NVBA Thursday night site: [Elks Lodge](#) and*

*WBL: [Ohr Kodesh Congregation, 8300 Meadowbrook Ln, Chevy Chase, MD](#) [NVBA \(Elks\)](#) [WBL](#)*

*Intermediate/Newcomer Lecture .....6:30 p.m. 7:00 p.m.*

STRATAFLIGHTED OPEN PAIRS (A/X=4000+/4000; B/C=2500/1500/750) ..7:00 p.m. 7:30 p.m.

NVBA 199ER PAIRS (200/100/50); WBL 499ER PAIRS (500/300/100) .....7:00 p.m. 7:30 p.m.

NEWCOMER PAIRS (0-20) .....7:00 p.m. 7:30 p.m.

### FRIDAY, FEBRUARY 16

*Gene's Friday Morning Game at KOCH: .....9:30 a.m.*

STRATIFIED OPEN (2000+/2000/750) or 500/300/100 PAIRS (NLMs only)

**...REST OF TOURNAMENT AT ELKS LODGE...**

*Intermediate/Newcomer Lecture .....1:15 p.m.*

STRATAFLIGHTED A/X (3000+/3000) or B/C (2000/750) PAIRS 2 p.m.

I/N (500/300/100) or 99ER (100/50/20) .....2 p.m.

TRIPLE NICKEL SWISS—5 rounds, 5 boards, 5 minutes a board ..7:30 p.m.

I/N (500/300/100) PAIRS .....7:30 p.m.

### SATURDAY, FEBRUARY 17

**\*\*ALL events on Sat. morning & afternoon award REGIONALLY RATED SILVER POINTS—an additional \$1 will be added to your entry fee to support Grass Roots events in our local area!\*\***

TROPHY EVENT: MARGOT & DON HENNINGS TROPHY PAIRS

(2 SESSIONS – Qualifying and Barometer Final) ..10:30 a.m. & 3 p.m.

STRATIFIED OPEN PAIRS (2000+/2000/750; Single session) 10:30 a.m.

*If too few pairs for separate game, pairs will be accommodated in Poissant Pairs*

I/N (500/300/100) or 49ER (50/20) PAIRS .....10:30 a.m.

STRATIFIED OPEN CONSOLATION (2000+/2000/750) .....3 p.m.

*—Open to Non-Qualifiers and New Entrants.*

*Intermediate/Newcomer Lecture .....2:15 p.m.*

I/N (500/300/100) PAIRS .....3 p.m.

### SUNDAY, FEBRUARY 18

FLIGHTS A/X (6000+/6000) BOARD-A-MATCH TEAMS 10:30 a.m. & TBA

BRACKETED FLIGHT B TEAMS (no single player >3000) 10:30 a.m. & TBA

*B Teams Bracketed by Total Team Masterpoints: three overall places in each.*

*A/X BAM & B Teams: 2-session events, a brief break & food available on-site.*

I/N (500/300/100) SWISS TEAMS .....10:30 a.m. / 2:30 p.m.

49ER (50/20) SWISS TEAMS .....10:30 a.m.

**SINGLE SESSION EVENTS are indicated by a slash (/) separating the start times.**

**STRATIFICATION** of events is based on average masterpoints of the team or pair. In any event or flight with an upper limit, no individual's total Masterpoint holding may exceed that upper limit. **Games under 500 MP limit will be stratified based on attendance and may vary.**

**DIRECTIONS:** From Route 50/Arlington Boulevard heading west from Route 495/Beltway: Continue on/Take Route 50 West—one mile outside the Beltway, & turn left at Javier Road (the second stoplight after the intersection of 50 and 495). Take an immediate right onto the access road; the Elks Lodge will be on your left—parking on the side & in the rear. **From Fairfax, heading East on Route 50:** Pass the intersection of Route 50 and Prosperity Avenue & turn right where you see the Elks Lodge #2188 sign.

*Plenty of free parking! On-site snack bar plus lots of free treats! Many great restaurants nearby!*

*Championship Events and 499er Events for Novice and Intermediate Players on Thursday and Friday!*

*Players with 0-5 Masterpoints play FREE in ALL games!*

#### Tournament Chair

*Margot Hennings,  
703-560-0245*

#### Partnership Chair

*Jay Simon  
nvbapartnerships@gmail.com  
571-789-8338 (C)*

*Mid-Chart Conventions  
permitted in all A/X Events*

#### Next NVBA Sectional

**Apr 26-29 at Arlington/  
Fairfax Elks Lodge  
(Thurs at KOCH)**

[www.nvba.org](http://www.nvba.org)

were deemed advisable to avoid further financial loss down the road.

- Despite its success, the Toronto Convention Center as a venue is expensive and the Spring NABC in Kansas City this year was not as profitable as estimated.

- The CEO Search Committee was able to save \$100K by working hard to find a new CEO without the expense of a professional search firm.

- Your new CEO has eliminated a number of planned expenses, including retention of an outside public relations firm, and is committed to “lean and mean” support for the BOD meetings at NABCs by bringing fewer ACBL staff members and working with the BOD to accomplish more in advance of each NABC.

#### World Bridge

Related to the above, the BOD narrowly passed a motion to require the three National Bridge Organizations (NBOs) comprising the ACBL—the United States Bridge Federation, the Canadian Bridge Federation and the Mexican Bridge Federation—to pay the \$167,000 annual dues (currently based on a commitment of \$1 from membership dues per ACBL Member) to the World Bridge Federation (WBF). ACBL will commit to increasing its fundraising efforts that would donate to these NBOs. Selection/election of representatives from ACBL to the WBF was left as is currently the case—with five reps elected by the BOD for staggered three-year terms—but creates a governance issue since this is now “representation without taxation” and something that the BOD will need to address.

#### More “Pajama Games?”

The first-ever Online Individual to be held during an NABC was run during Toronto as an experimental four-day, four-session Bridge Base Online (BBO) robot duplicate event. It was well-received, with the most criticism being levied against it the fact that it was one “open” event with no separate masterpoint-delimited events run alongside it. And then, of course, there are those robots—not everyone's favorite partner or opponent. As an experiment, it went well with ACBL HQ and the BOD looking at how to improve and expand such games in the future.

#### Key Actions Expected in San Diego

- Continued joint BOD – HQ discussions on how the Ten Big Ideas address the three main strategic priorities of the organization: 1) Increasing membership; 2) Continuing to invest in technology to secure our infrastructure and establish the future architecture of ACBLscore®; and 3) Addressing anticipated Volunteer shortages and burnout. Previous years' priorities—TDU, Finance, and Cheating—have been moved to operational status





Sponsored by the  
**RICHMOND BRIDGE ASSOCIATION**  
At the Fraternal Order of Eagles,  
21 Cool Springs Rd. (Route 607)  
Fredericksburg, VA



with many processes in place to help ensure they do not return to the level of a strategic concern.

- **Potential changes to the Fall NABC schedule**—The C&C Committee has been discussing for some time the inclusion of a KO event (named for Paul Soloway) at the beginning of the Fall NABC, so that there would be a prolonged KO event at every NABC. Whether and when to include it are different questions with the second being more complicated than the first. Jeff Meckstroth came before the BOD in Toronto to submit his proposed schedule, and there are other ideas that could be incorporated as well. Right now, if you want to play in the NABC Senior Mixed Pairs event, this precludes you from also playing in both the NABC+ Blue Ribbon Pairs and the Reisinger or the three-day Swiss on the final weekend. There is strong sentiment for starting the Soloway KO early in the schedule, but then it would overlap with the Senior KOs. Too many events? Need to make choices? Allow drop-ins? The answers are never easy.

### **Ten Big Ideas**

- **The Email:** As an ACBL Member, you will have received an email from Headquarters summarizing “Ten Big Ideas,” many of which are subsumed under or address the topics listed in the opening paragraph of this report. That email asked you to rank these Ideas in preference order, which you may have found difficult to do. Most of us on the BOD are in favor of the Ideas in principle—such as “Redistribution of Tournaments”—although we view some as ill-advised at this time or simply although reasonably “harmless,” not actions that are likely to produce much traction in attracting new Members or better satisfying current ones.

- **Tournament Tactics:** Are there too many tournaments, too many special games? I don't think anyone would argue with the assessment that there are—it is the implementation strategies for many of the proposed approaches HQ suggests with which many of us on the BOD disagree. Eliminating sectional tournaments as we have come to know them seems to be the most contentious. It is true that sectionals (and regionals and NABCs) conflict with club games and hurt the bottom line financially for club owners, especially those who run “full-time clubs” and have overhead expenses to pay. But, is eliminating face-to-face play at local venues rented several times a year to bring together friends and partners for the purpose of winning silver points the best way to “solve” this problem? Creative, out-of-the-box approaches are needed and in defense of what HQ is doing, putting those ideas out for the Members to think about and consider is one way to find out what the perspective is from different categories of Members—club owners, tournament sponsors, directors, players, everyone.

- **Experimental Events:** I am excited to try new

### **FRIDAY, MARCH 16**

Stratified Open Pairs (0-300, 300-1500, 1500+)\* ... 10:00 am  
Stratified Open Pairs (0-300, 300-1500, 1500+)\* ... 3:00 pm  
99er Pairs (*pending sufficient entries*) ..... 3:00 pm

### **SATURDAY, MARCH 17**

Newcomer Pairs 0-300 ..... 10:00 am  
Stratified Open Pairs (0-300, 300-1500, 1500+)\* ... 10:00 am  
Bracketed Pairs/BAM Teams ..... 3:00 pm  
*A, B, and C play Sectional Pairs game. Simultaneously, Director pairs teams according to masterpoints (highest to lowest) giving all TWO chances to win!*

### **SUNDAY, MARCH 18**

Bracketed Swiss Teams ..... 10:00 am & TBA  
*8 teams in each bracket, 7 rounds, playthrough, lunch available*

*\*Strata may be modified based on attendance*

### **LOCATION**

Fraternal Order of Eagles

21 Cool Springs Rd. (Route 607), Fredericksburg, VA

**DIRECTIONS:** Coming from the North: Take I95 South to Exit 133-A (Rt 17 Business/Falmouth). Coming from the South: Take I95 North to Exit 133, take turnoff to Falmouth. From the exit, continue to the 3rd light, at Rt 1 (approx. 2 miles). Be sure to be in the left lane and cross Rt 1 and continue approx 3 miles to 3rd light at Rt 607 (Cool Springs Rd). Turn right and Eagles is 1 block on left.

### **REFRESHMENTS**

(every session)

*Homemade Cookies  
Coffee, Tea, Soft Drinks  
Sunday: Doughnuts &  
Bagels and Box Lunch  
available between sessions*

### **TOURNAMENT CHAIR**

**Deborah Hage**  
(540) 498-1206  
debhage@hotmail.com

### **PARTNERSHIPS**

**Sheila Young**  
(540) 220-0868  
**Paul McGowan**  
(540) 785-3277

### **PAIR GAME STRATA**

0-300, 300-1500, 1500+

### **ENTRY FEES**

\$10 per player/session;  
\$88 per team on Sunday;

*\$3 additional per  
player/session for non or  
unpaid ACBL members*



## 40th Annual LYNCHBURG SPRING SECTIONAL

~Great Location!~

at the **FOREST RECREATION CENTER**  
1088 RUSTIC VILLAGE RD, FOREST, VA 24551

~Great Snacks and Hospitality!~

### FRIDAY, MARCH 23 (single session events)

Stratified Pairs (0-500, 500-2000, 2000+)\* . . . . . 10:00 A.M. / 2:00 P.M.

### SATURDAY, MARCH 24 (single session events)

Unit 139 Board Meeting . . . 1:00 P.M.

Stratified Pairs (0-500, 500-2000, 2000+)\* . . . . . 10:00 A.M. / 2:00 P.M.

### SUNDAY, MARCH 25

Stratified Swiss Teams (0-500, 500-2000, 2000+)\* . . . . . 10:00 A.M. & TBA

*\*Strata may be modified based on attendance*

**Entry Fees** – \$10/person/session, Sunday Team Game \$100/team  
\$3 additional/person for non/unpaid ACBL members

—Plenty of homemade food and catered lunch on Sunday!!!—

**Tournament Chair** – Anne Barlow (434) 237-8143, abarlow503@gmail.com

**Partnership Chair** – Jo Ann Stover (434) 616-6966, joann24501@aol.com

### Tournament Hotel

La Quinta Inn & Suites  
3320 Candler's Mtn Road  
Lynchburg, VA 24502  
434-847-8655

**Directions to Rec Center:** From US-29B South or North merge onto or take Rt. 501 North (Lynchburg Expressway). Follow 3.1 miles, turn left on Forest Rd. US-221. Go 4.6 miles. Turn left at light onto Thomas Jefferson Rd. (Rt. 811). Take 1st left onto Rustic Village Rd. From Roanoke take US-460 East toward Lynchburg. Turn left on Thomas Jefferson Rd. Go 5 miles, turn right on Rustic Village Rd.

approaches, yet appreciate the hurdles that have to be overcome in making any trial experiment successful. There are many issues currently with STaCs, for example—uneven fields yielding skewed overall results, inconsistent application of rules—that should give us all pause before surrendering to the idea that sectionals as we know them should be totally implemented in a club environment. But, this does not mean we should be wedded to the “same old, same old” for fear of making a misstep. So...**it looks like D6 will be among the first to try out several new events:**

—**The first experiment allows clubs to hold games that include the ability to win GOLD points at the club.** I have been working with Jay Whipple, the creator of the common game (TCG) and Fast Results, to make this happen—on a trial basis—in November during our D6 Chesapeake regional. The regional would be held as currently planned, but clubs that belong to TCG would be approved to allow players to pay an extra fee in advance to play face-to-face—no robots, no tablets, no wifi connections needed—in one to five “afternoon” club games and compete for **GOLD** in a five-day-long side series pairs event. You choose **WHEN** you play just like in a side series at a “regular” regional, and also **WHERE** you play—you may play in a different club every day. Go to <https://sites.google.com/site/racswingforgold/> to find out more, including how to encourage your favorite club to join TCG if it has not already done so.

—After considerable dialogue with HQ to iron out the technical aspects, D6 is being allowed to run two **new KO-like events in Chesapeake** in lieu of the Tuesday and the final Saturday “standard” KOs that were originally scheduled. Bill Cole, a former D6 President, was creatively thinking along the same lines as several others in nearby districts to figure out ways to make KOs more attractive to all players. Participation in the final (Day 6) KO at a Regional has been dropping to the point where it is difficult to create appropriate brackets so that competitiveness is assured and players enjoy playing. Same thing to a somewhat lesser extent on Tuesday (Day 2). Players are being “forced” to play in the top bracket when they really don’t “belong” there, and they (you!) are voting with their feet. No one has any fun—not the team with a player average of 2100 MPs who gets trounced or the team with a player average of 21,000 MPs that does the trouncing. We hope the two new events—a round-robin KO on Tuesday and a three-session one-day KO on Saturday will be fun for everyone.

—Restructuring of KOs is a top priority of the BOD Bridge Committee and is being spurred on its way by the Tournaments Task Force, of which I am the Chair. There are rules and regulations in place that govern how many MPs may be awarded in KO events, based on number of teams in a

**2017-2018 North American Pairs—District Winners**

The annual North American Pairs District 6 Qualifier took place September 23-24 with healthy attendance as always. In Flight A, Daniel Korbel and Sylvia Shi came in first. It was a tight contest, with only two matchpoints separating 2<sup>nd</sup> and 4<sup>th</sup>. On the flip side, in Flight B, Jim Gaarder and Jimmy Ritzenberg took first easily in the North site, and Ed Kinlaw and Govind Narayan were the top scorers from the Southern site. Joseph Lebaron and Myron Goldstein won the Flight C bracket in the North, with Jack Spooner and Donnie Walsh coming in first in the South. Congratulations to all qualifiers and we hope you have great success in Philadelphia!

—Flight A—

1. Daniel Korbel, Sylvia Shi
2. David Milton, Stan Schenker
3. Alan Sontag, Robin Taylor

—Flight B—

1. Jim Gaarder, Jimmy Ritzenberg (top finisher N site)
2. Ed Kinlaw, Govind Narayan (top finisher S site)
3. Brian McNamura, Arthur Weiss (2<sup>nd</sup> N site)
4. Peter Haglich, Joe Siqueira (next highest % from either site)

—Flight C—

1. Joseph Lebaron, Myron Goldstein (top finisher N site)
2. Jack Spooner, Donnie Walsh (top finisher S site)
3. Sartaj Alag, David Goldfrank (2<sup>nd</sup> N site)
4. James Stiff, Brian Knapik (2<sup>nd</sup> S site)

bracket and number of boards played within a session. This is being addressed on a trial basis for Chesapeake to allow for a smaller top bracket with some compensation for field strength to make up for the fewer number of teams. Formal changes are being proposed in San Diego that will implement these and other MP changes.

As always, contact me with any questions at [margot10bridge@cox.net](mailto:margot10bridge@cox.net). Hope to see many of you at the Chesapeake Regional!

—Margot

WASHINGTONBRIDGELEAGUE.ORG

Mid-chart allowed in all events except I/N

**71<sup>st</sup> Annual CITY OF WASHINGTON TOURNAMENT**  
at the **MARGARET SCHWEINHAUT SENIOR CENTER**  
1000 Forest Glen Rd, Silver Spring, MD (Friday-Sunday only)

**THURSDAY, APRIL 5**

- ♣ StrataFlighted A/X (unlim/2000) & B/C/D (1000/500/300) Pairs **Rockville Duplicate Bridge Club, 301-503-3348 (Mark Lavine) St. James Episcopal Church, 11815 Seven Locks Rd., Rockville** **NO ENTRY TILL 11AM**
- ♦ StrataFlighted A/X (unlim/4000) & B/C/D (2500/1500/750) Pairs (both sites), Intermediate/Novice Pairs (500/300/100) (Obr Kodesh), Stratified 199er Pairs (200/100/50) (KOCH), & 0-20 Pairs (both sites)  
**Beth El Hebrew Congregation, 3830 Seminary Road, Alexandria 7:00pm**
- ✳ **Kensington Town Hall, 3710 Mitchell St., Kensington, MD . . . . . 7:30pm**  
I-495 to Exit 33, Connecticut Ave. North (Rt. 185N to Kensington). 1.5 miles, right at light—Knowles Ave. 1<sup>st</sup> left at stop to parking lot on right. Additional parking in nearby lots.

**FRIDAY, APRIL 6**

- ♣ \*StrataFlighted A/X (unlim/4000) & B/C/D Pairs (2500/1500/750) (single sessions) . . . . . 11 am, 3 pm
- ♦ **Relaxed & Fun Stratified IMP Pairs/Teams** (unlim/2500/750) . . . . . 7:30 pm  
—2 Chances to Win!— This innovative game moves like a pair game & scores the better of your IMP pair & team game. Come as a team of 4 or as a pair & we'll find you teammates.
- ♣ Intermediate/Novice Pairs (500/300/100) & 49er Pairs (50/20/5) (single sessions) 11 am, 3 pm, 7:30 pm

—Lunch available for purchase—

**SATURDAY, APRIL 7**

**Win upgraded (more) masterpoints today! (\$1 additional fee supports Grass Roots events.)**

- ♣ \*StrataFlighted A/X (unlim/4000) & B/C/D Pairs (2500/1500/750) (single sessions) . . . 11 am, 3:30 pm
- ♦ Intermediate/Novice Pairs (500/300/100) & 49er Pairs (50/20/5) (single sessions) . . . 11 am, 3:30 pm

—Lunch available for purchase—

**SUNDAY, APRIL 8**

- ♣ Flights A/X (unlim/5000) Swiss Teams (2 session playthrough w/break) . . . . . 11 am & TBA
- ♣ Bracketed Flight B Teams (no single player >3000) (2 session playthrough w/break) . . . . 11 am & TBA  
B Teams Bracketed by total team masterpoints; three overall places in each.
- ♦ 500/300/100 Swiss Teams, VPs (single sessions) . . . . . 11 am, 3 pm

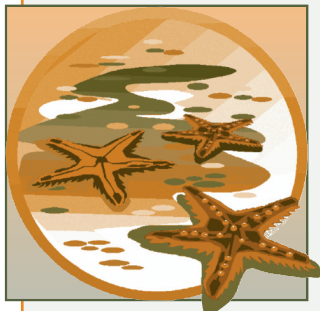
♣ **Lots of Intermediate & Novice Events w/ Silver Points!** ♥0-5 MP play FREE! ♠  
Separate I/N events & strata as advertised as attendance allows. (Director's discretion.)

**Hospitality** includes snacks, drinks, & **Friday lunch & evening desserts**. Sat. & Sun. lunch available for purchase. **Tournament Chair: Brad Theurer**, 301-527-8819, [bathurer256@gmail.com](mailto:bathurer256@gmail.com); **Volunteer Coordinator: Barbara Summers**, 301-598-5838, [jimbarb1184@aol.com](mailto:jimbarb1184@aol.com); **Partnerships: Barbara Doran**, 301-608-0347, [barb.doran@verizon.net](mailto:barb.doran@verizon.net), **Online Partnership Desk** available.

\*StrataFlighted if attendance warrants—otherwise combined into Stratified Pairs (unlim/2500/750) Stratification by avg. masterpoints of the team or pair. No individual may exceed the event's upper limit.

**Directions to the Margaret Schweinhaut Senior Center**, 1000 Forest Glen Rd, Silver Spring, MD: I-495 to Georgia Avenue North (toward Wheaton). 1<sup>st</sup> light right on Forest Glen Rd. The Center is .7 mile on right.





# Norfolk/ Virginia Beach Spring Sectional

**Unit 146 Bridge Center**

4966 Euclid Road, Virginia Beach, VA 23462

—Stratification based on partnership/team average—

**Directions:** Take North Witchduck exit off I-264. After 4/10 mile, turn right onto Cleveland Street. After 3/10 mile, turn diagonally right on Euclid Road. The Bridge Center is at 4966 Euclid Road, 3/10 mile on the left, in the U-shaped Pocahontas Office Park.

**Nearby Hotels:** **Hampton Inn**, 5793 Greenwich Road, Virginia Beach, 757-490-9800  
**Motel 6**, 4760 Euclid Road, Virginia Beach, 757-499-1935

*Fri & Sat PM games regionally rated—extra points, no extra money.*

## **Friday, April 6**

*(Light lunch served between sessions)*

Stratified Pairs (single sessions) . . . . .10:30 AM & 2:30 PM  
(0-750, 750-1500, 1500+ MPs)  
Novice Pairs (single sessions) . . .10:30 AM & 2:30 PM  
(0-100, 100-200, 200-NLM up to 500)

## **Saturday, April 7**

*(Light lunch served between sessions)*

Stratified Pairs (0-750, 750-1500, 1500+ MPs) 10:30 AM  
Novice Pairs . . . . .10:30 AM  
(0-100, 100-200, 200-NLM up to 500)  
Bracketed Pairs/Board-A-Match Teams . . . . .2:30 PM  
(Play in a stratified pairs game. At the same time, each pair is teamed according to MP (highest to lowest). *Two chances to win!*)

## **Sunday, April 8**

Stratified Swiss Teams (0-750, 750-1500, 1500+ MPs) . . . . .10:30 AM & TBA  
Novice Stratified Swiss Teams (0-100, 100-200, 200-NLM up to 500) . .10:30 AM & TBA

**Entries:** \$10 per person per pairs session; \$84 per team (includes meal between sessions for 4 team members). Additional \$3 for unpaid or non-ACBL members.

**Great Hospitality:** Includes free snacks, sodas and coffee for all events.

— Strata may be adjusted at director's discretion based on attendance—

### **Tournament Co-Chairs**

**Brian Boyce**  
757-434-0792,  
brian@bfboyce.com

**TBD**

### **Partnership Chair**

**Brian Boyce**  
757-434-0792,  
brian@bfboyce.com

## **2017-18 GRAND NATIONAL TEAMS FAQ**

### 1. What is the Grand National Teams (GNT)?

The GNT is a grass roots event in which you start by qualifying at a club, a Unit game, or at a Non-Life Master tournament. Then you compete at the District level. If you win your bracket, you will represent our District at the Summer Nationals in Atlanta, Georgia.

### 2. How many flights are in the GNT's?

There are four separate flights. The Open flight is for all players. "A" flight is for players with 0-6000 masterpoints. "B" flight is for players with 0-2500 masterpoints. "C" flight is for non-life masters with fewer than 500 masterpoints. Each flight is set up as a championship event against your peers. Your masterpoint card as of September 1, 2017 will identify your flight eligibility.

### 3. How do I enter the District competition?

Find teammates. Teams with four, five, or six players are allowed. You do not have to play with the team you qualify with at the local club game. However everyone on your team must be club qualified. For help in finding local club or Unit qualifying GNT games, see the District 6 website at [www.districtsixbridge.org](http://www.districtsixbridge.org). Then play at the location most convenient for you. Once you have qualified, the District competition begins. The first weekend of play for B and C is held at two different sites (Silver Spring, Maryland and Charlottesville, Virginia). For the Open and "A" flights, the first weekend of play is held in Silver Spring, Maryland.



NORTHERN VIRGINIA BRIDGE ASSOCIATION  
**PRING SECTIONAL TOURNAMENT**

**The Arlington/Fairfax Elks Lodge #2188**

8421 Arlington Boulevard, Fairfax, VA; 703-560-2188

4. Why do you have more than one site for District level competition?

We are trying to avoid long travel times as much as possible. By having sites in Silver Spring and Charlottesville for "B" and "C" flights, most of the District has less than a two hour drive to reach a site.

5. What happens after my "B" or "C" team advances at my District site?

The champions of each District site come together for a second weekend in Silver Spring, Maryland. In Flight C they play one day (Sunday) and in other flights-two days (Saturday and Sunday) The winning team in all four flights receives \$1500 and a chance to win a National Championship in July 2018 in Atlanta, Georgia.

6. Our team finds it difficult to free up time for four specific weekend days?

Form a five or six person team. The rules say each team member must intend to play half the boards or half the total sessions. So if you have a team member who can only play specific days or specific weekends, work your lineups accordingly. Also two session substitutes are possible. (See the Conditions of Contest on the District 6 website.)

7. How do I find out more information?

See the District 6 website at:  
[www.districtsixbridge.org](http://www.districtsixbridge.org)

For questions contact Lynn Jones at 410-560-3244 or email: [bridgelynn@comcast.net](mailto:bridgelynn@comcast.net)  
**Cost per team is \$100. This covers two sessions (one day) of play. Checks should be made out to District 6 and sent to Lynn Jones 10 Tenby Court Timonium, MD 21093, Please include player numbers.**

**THURSDAY, APRIL 26**

STRATIFIED OPEN PAIRS (2000+/2000/750) or 500/300/100 PAIRS .....10:30 a.m.  
*Norma's Game: K of C Hall (KOCH), 5115 Little Falls Rd., Arlington, VA, 703-892-1292*  
*Evening games at: NVBA: \*Beth El Hebrew Congregation\* 3830 Seminary Rd, Alexandria, VA, and*  
*WBL: Ohr Kodesh Congregation, 8300 Meadowbrook Ln, Chevy Chase, MD* **NVBA (KOCH) WBL**  
*Intermediate/Newcomer Lecture* .....6:30 p.m. 7:00 p.m.  
STRATAFLIGHTED OPEN PAIRS (A/X=4000+/4000; B/C=2500/1500/750) . 7:00 p.m. 7:30 p.m.  
NVBA 199ER PAIRS (200/100/50); WBL 499ER PAIRS (500/300/100) ..... 7:00 p.m. 7:30 p.m.  
NEWCOMER PAIRS (0-20) ..... 7:00 p.m. 7:30 p.m.

**FRIDAY, APRIL 27**

*Gene's Friday Morning Game at KOCH:* .....9:30 a.m.  
STRATIFIED OPEN (2000+/2000/750) or 500/300/100 PAIRS (NLMs only)  
**...REST OF TOURNAMENT AT ELKS LODGE...**  
*Intermediate/Newcomer Lecture* .....1:15 p.m.  
STRATAFLIGHTED A/X (3000+/3000) or B/C (2000/750) PAIRS 2 p.m.  
I/N (500/300/100) or 99ER (100/50/20) ..... 2 p.m.  
TRIPLE NICKEL SWISS—5 rounds, 5 boards, 5 minutes a board . 7:30 p.m.  
I/N (500/300/100) PAIRS ..... 7:30 p.m.

**SATURDAY, APRIL 28**

**\*\*ALL events on Sat. morning & afternoon award REGIONALLY RATED SILVER POINTS —an additional \$1 will be added to your entry fee to support Grass Roots events in our local area!\*\***  
STRATAFLIGHTED A/X or B/C PAIRS .....10:30 a.m. / 3 p.m.  
A/X (3000+/3000) or B/C (2000/750)  
I/N (500/300/100) or 49ER (50/20) PAIRS .....10:30 a.m.  
*Intermediate/Newcomer Lecture* ..... 2:15 p.m.  
I/N (500/300/100) PAIRS ..... 3 p.m.

**SUNDAY, APRIL 29**

FLIGHTS A/X (6000+/6000) SWISS TEAMS .....10:30 a.m. & TBA  
BRACKETED FLIGHT B TEAMS (no single player >3000) 10:30 a.m. & TBA  
*B Teams Bracketed by Total Team Masterpoints: three overall places in each.*  
*A/X Swiss & B Teams: 2-session events, a brief break & food available on-site.*  
I/N (500/300/100) SWISS TEAMS .....10:30 a.m. / 2:30 p.m.  
49ER (50/20) SWISS TEAMS .....10:30 a.m.

**SINGLE SESSION EVENTS are indicated by a slash (/) separating the start times.**

**STRATIFICATION** of events is based on average masterpoints of the team or pair. In any event or flight with an upper limit, no individual's total Masterpoint holding may exceed that upper limit. **Games under 500 MP limit will be stratified based on attendance and may vary.**

**DIRECTIONS:** From Route 50/Arlington Boulevard heading west from Route 495/Beltway: Continue on/Take Route 50 West -one mile outside the Beltway, & turn left at Javier Road (the second stoplight after the intersection of 50 and 495). Take an immediate right onto the access road; the Elks Lodge will be on your left—parking on the side & in the rear. From Fairfax, heading East on Route 50: Pass the intersection of Route 50 and Prosperity Avenue & turn right where you see the Elks Lodge #2188 sign.

Plenty of free parking! On-site snack bar plus lots of free treats! Many great restaurants nearby!

Championship Events and 499er Events for Novice and Intermediate Players on Thursday and Friday!  
**Players with 0-5 Masterpoints play FREE in ALL games!**

**Tournament Chair**  
*Margot Hennings,*  
703-560-0245

**Partnership Chair**  
*Jay Simon*  
nvbapartnerships@gmail.com  
571-789-8338 (C)

Mid-Chart Conventions permitted in all A/X Events

**Next NVBA Sectional Sept 6-9 at Arlington/Fairfax Elks Lodge (Thurs at KOCH)**

[www.nvba.org](http://www.nvba.org)



## Blue Crab Sectional

TRAPPE VOL FIRE CO. HALL

4001 Powell Avenue, Trappe, MD

*New Event Site with Elevator*

### THURSDAY MAY 17 (single sessions)

Stratified Pairs: 0-750/750-2000/2000+ .....10:00 AM & 2:15 PM

I/N Stratified Pairs: 0-50/50-100/100-299 .....10:00 AM & 2:15 PM

### FRIDAY MAY 18 (single sessions)

Stratified Pairs: 0-750/750-2000/2000+ .....10:00 AM & 2:15 PM

I/N Stratified Pairs: 0-50/50-100/100-299 .....10:00 AM & 2:15 PM

### Eastern Shore Hospitality

*Morning coffee; Afternoon cookies; Light lunch between all sessions*

#### Co-Chairs

JOHN & WILLIE DiLAURA

443-262-8062

[jwdilaura@yahoo.com](mailto:jwdilaura@yahoo.com)

PHIL FELDMAN

410-463-0982

[pfeldman@sequareu.com](mailto:pfeldman@sequareu.com)

#### Partnerships

WENDY RICHARDSON

410-463-6436

[hallie2@yahoo.com](mailto:hallie2@yahoo.com)

**Directions:** On US 50 East, come through Easton, six miles to Trappe. Turn right on Greenfield Avenue, 0.2 miles past High's Store. Powell Avenue is two blocks away. From Cambridge and further East, on US 50 West, cross the Choptank Bridge, 4 miles to turn left onto Main Street, drive a few blocks, Powell Avenue is on your Right.

#### Cambridge:

HYATT CHESAPEAKE.....844-497-2297

COMFORT INN.....410-901-0926

DAYS INN .....410-228-4444

#### Easton:

HOLIDAY INN EXPRESS .....855-230-0222

HAMPTON INN .....800-992-2694

FAIRFIELD INN.....844-335-5722



Choptank River Lighthouse

### The Mid-Atlantic...

Home to the ACBL's premier Regionals — hosting 33,000 tables during this past year. It's time to check your 2017-18 calendar and plan to play in the biggest and best tournaments of

#### .....November, 2017

● **P 8...Nov 10-12** .....Williamsburg, VA  
Jane Farthing, 703-850-9635, [jane.farthing@gmail.com](mailto:jane.farthing@gmail.com)

● **P 3...Nov 13-19** . Cambridge, MD **REGIONAL**  
Shawn Stringer, 301-275-6363, [shstringer@aol.com](mailto:shstringer@aol.com)

**Nov 23-Dec 3** . SAN DIEGO, CA **NATIONALS**  
Fall North American Bridge Championships

#### .....December, 2017

● **P 9...Dec 8-10** .....Charlottesville, VA  
Betsey Ruehl, 540-942-3667, [etruehl@ntelos.net](mailto:etruehl@ntelos.net)

**Dec 11-17** .....D6 & Unit 190 StAc  
Don Berman, 301-776-3581, [don.berman@verizon.net](mailto:don.berman@verizon.net)

**Dec 27-Jan 2** . Myrtle Beach D7 **REGIONAL**  
Karen Galleher, 843-318-6391, [kgalleher@sc.rr.com](mailto:kgalleher@sc.rr.com)

#### .....January, 2018

● **P 10...Jan 4-7** .....Silver Spring, MD  
Brad Theurer, 301-527-8819, [batheurer256@gmail.com](mailto:batheurer256@gmail.com)

● **P 11...Jan 5-7** .....Norfolk/Va Beach, VA  
Brian Boyce, 757-412-4925, [brian@bfboyce.com](mailto:brian@bfboyce.com)

● **P 12...Jan 12-14** .....Richmond, VA  
Barry and Winnie Fratkin, 804-741-6782 (H) ,  
804-837-6782 (C), [fratco@mac.com](mailto:fratco@mac.com)

**Jan 20-21** .....GNT Flight A (0-6000)  
1st weekend

**Jan 22-28** .....D6 & Unit 190 StAc  
Don Berman, 301-776-3581, [don.berman@verizon.net](mailto:don.berman@verizon.net)

#### .....February, 2018

● **P 13...Feb 2-4** .....Halethorpe, MD  
Ed Rothenheber, 443-280-0828,  
[rothenheber\\_ed@bah.com](mailto:rothenheber_ed@bah.com)

● **P 2...Feb 5-11** Hilton Head, SC D7 **REGIONAL**  
Ann Grindstaff, [annkurt@hargray.com](mailto:annkurt@hargray.com)

the year. Mid-Atlantic regionals offer loads of Bracketed Knockouts, exciting Intermediate/Newcomer schedules and

# 1 Year DISTRICT 6 Calendar OF EVENTS

lectures, and our three favorite words: hospitality, hospitality, hospitality.

.....February, continued...

**P 14...Feb 15-18** .....Fairfax, VA  
Margot Hennings, 703-560-0245,  
margot10bridge@cox.net

**P 5...Feb 26-Mar 4 Williamsburg, VA REGIONAL**  
Jane Farthing, 703-850-9635 c, 757-229-7275 h,  
jane.farthing@gmail.com, Karen Crowley, 678-371-6110,  
Karen.Thorne.Crowley@gmail.com

.....March, 2018

**Mar 8-18** ..PHILADELPHIA, PA **NATIONALS**  
Spring North American Bridge Championships

**P 15...Mar 16-18** .....Fredericksburg, VA  
Deborah Hage, debhage@hotmail.com, 540-659-1321

**P 4...Mar 19-25 Pine Mountain, GA D7 REGIONAL**  
Len Perkins, lenperkins@hotmail.com

**P 16...Mar 23-25** .....Lynchburg, VA  
Anne Barlow, abarlow503@gmail.com

.....April, 2018

**P 17...Apr 5-8** .....Silver Spring, MD  
Brad Theurer, 301-527-8819, batheurer256@gmail.com

**P 18...Apr 6-8** .....Norfolk/Va Beach, VA  
Brian Boyce, 757-412-4925, brian@bfboyce.com

**Apr 7-8** .....GNT Flight A (0-6000)  
2nd weekend

**Apr 14-15** ...GNT Open, Flight B, Flight C  
1st weekend

**P 6...Apr 16-22 Gatlinburg, TN D7 REGIONAL**  
Julia Misslin, 423-884-3550, jupe60@tds.net

**P 19...Apr 26-29** .....Fairfax, VA  
Margot Hennings, 703-560-0245, margot10bridge@cox.net

**Apr 30-May 6 Wilmington, DE D4 REGIONAL**  
Bruce and Judy Gwaltney, 302-478-2396,  
judygwalt@verizon.net

.....May, 2018

**May 5-6** .....GNT Open, Flight B, Flight C  
2nd weekend

**May 7-13** .....D6 StAC  
Don Berman, 301-776-3581, don.berman@verizon.net

**P 20...May 17-18** .....Trappe, MD  
John & Willie DiLaura, jwdilaura@yahoo.com, 443-  
262-8062

**May 22-28** ....Raleigh, NC D7 **REGIONAL**  
Audrey Shull, Audrey.shull@imp.com

.....June, 2018

**Jun 1-3** .....Halethorpe, MD  
Ed Rothenheber, 443-280-0828,  
rothenheber\_ed@bah.com

**Jun 1-3** .....Blacksburg, VA  
Rich Rio, 540-553-6228, richrio428@yahoo.com

**Jun 1-3** .....Williamsburg, VA  
Jane Farthing, 703-850-9635, jane.farthing@gmail.com

**Jun 7-10** .....Silver Spring, MD  
Brad Theurer, 301-527-8819, batheurer256@gmail.com

**Jun 11-17** .....D6 & Unit 190 StAC  
Don Berman, 301-776-3581, don.berman@verizon.net

**Jun 22-24** .....Richmond, VA  
Barry and Winnie Fratkin, 804-741-6782 (H) ,  
804-837-6782 (C), fratco@mac.com

**Jun 25-Jul 1** .....D4 **REGIONAL**  
Meyer Kotkin, **King of Prussia, PA**  
856-986-5109, guymath@comcast.net

.....July, 2018

**Jul 2-8** .....Reston, VA **REGIONAL**  
Amanda Carter, aecarter3@juno.com

**Jul 13-15** .....Norfolk/Virginia Beach, VA  
Brian Boyce, 757-434-0792, brian@bfboyce.com

.....July, continued...

**Jul 26-Aug 5** ....ATLANTA, GA **NATIONALS**  
Summer North American Bridge Championships

.....August, 2018

**Aug 13-19** ...Hunt Valley, MD **REGIONAL**  
Diane Jaworowsky, 410-461-2083, DianeJaw@verizon.net

**Aug 25-26** .Norfolk/Virginia Beach, VA **NLM**  
Kathleen Haglich, 757-467-4136, kathyvsh@gmail.com

**Aug 28-Sep 3** ..Augusta, GA D7 **REGIONAL**  
Robert Coleman, csrabridge@yahoo.com

.....September, 2018

**Sep 6-9** .....Fairfax, VA  
Margot Hennings, 703-560-0245, margot10bridge@cox.net

**Sep 14-16** .....Norfolk/Va Beach, VA  
Brian Boyce, 757-412-4925, brian@bfboyce.com

**Sep 28-30** .....Williamsburg, VA  
Jane Farthing, 703-850-9635, jane.farthing@gmail.com

.....October, 2018

**Oct 11-14** .....Silver Spring, MD  
Brad Theurer, 301-527-8819, batheurer256@gmail.com

**Oct 12-14** .....D7 Abingdon, VA  
Auggie de Weerd, 619-886-5139,  
abingdonbridgeclub@yahoo.com

**Oct 19-21** .....Richmond, VA  
Barry and Winnie Fratkin, 804-741-6782 (H) ,  
804-837-6782 (C), fratco@mac.com

**Oct 22-28** ....Charlotte, NC D7 **REGIONAL**  
David Smith, davidbsmith@bellsouth.net

**Oct 25-28** .....Fairfax, VA  
Margot Hennings, 703-560-0245, margot10bridge@cox.net

**Oct 29-Nov 4** .....D4 **REGIONAL**  
John Klingler, **Lancaster, PA**  
dhklingler@epix.net

## **2017-18 Grand National Teams — Get Your Team Together!**

It is time to get to your local club or unit game to qualify to win a partially subsidized trip to the **Summer 2018 NABC** in **ATLANTA, GEORGIA**. If you win, you will represent District 6 in the national finals of this grassroots competition.

The club/unit game qualification period began on September 1, 2017 and will end on May 5, 2018. To qualify, you can go out and play as often as you want and with whomever you want. As long as whatever team you play on wins at least 50% of its matches during a qualifying game, then you are eligible. You can form the team you want to play on in the District Finals from among all eligible players in your bracket.

The competition contains four brackets. In the Open bracket all players may enter. Bracket A is limited to players with 0-6000 masterpoints. Bracket B is limited to players with 0-2500 masterpoints. Bracket C is limited to Non-Life Masters with fewer than 500 masterpoints. Masterpoint eligibility is determined by the September 1, 2017 ACBL list of points. In club play, the Open and A brackets will be combined.

Masterpoints awarded at the club or unit level are half-red and half-black. These masterpoints are an easy way to earn colored points without traveling or changing your local partners or playing habits. At the District level competition, the match awards are red and the overall awards are gold. (Bracket C awards 25% gold and 75% red.)

We will be holding the first weekend of the District finals of Brackets B and C at one northern site (Schweinhaut Senior Center) and one southern site (Comfort Inn Monticello).

### ***You must pre-register to play. Pre-registration ends Midnight on the Thursday, nine days before the event.***

Team captains must submit a check or money order for \$100 made out to District Six with the names and ACBL numbers of all players, email address for the Captain, the level of Bracket you are playing in, and your choice of the northern or southern site (if you are playing in Bracket B or Bracket C). This covers 2 sessions (one day) of play. Checks for pre-registration may be submitted to the GNT Coordinator at the Southern site, Nan Massie, or may be sent to Lynn Jones 10 Tenby Court Timonium, MD 21093. For Bracket A, checks must be postmarked by January 10, 2018. For the Open, Bracket B and Bracket C, checks must be postmarked by April 5, 2018. Pre-registration payment and team information for Bracket A can also be provided to Steve Robinson, if you see him in person.

Any questions, please contact Lynn Jones at 401 560 3244 or [bridgelynn@comcast.net](mailto:bridgelynn@comcast.net). You can find Conditions of Contest, directions to sites, & where to qualify at [districtsixbridge.org](http://districtsixbridge.org).

### **Open Bracket**

#### **First Weekend:**

Schweinhaut Senior Center  
Silver Spring, MD  
Saturday, April 14, 12 Noon  
Sunday, April 15, 11 A.M.

#### **Second Weekend: For all qualified teams**

White Oak Community Center  
Saturday, May 5, 12 Noon  
Sunday, May 6, 11 A.M. ... Finals

### **Bracket A (0-6000 MP)**

#### **First Weekend:**

White Oak Community Center  
Silver Spring, MD  
Saturday, January 20, 12 Noon  
Sunday, January 21, 11 A.M.

#### **Second Weekend: For all qualified teams**

WBL Sectional  
Silver Spring, MD  
Saturday, April 7, 11A.M.  
Sunday, April 8, 11 A.M. ... Finals

### **Bracket B (0-2500 MP) } (-or-) Bracket C (0-500 MP)**

#### **First Weekend: Northern Site**

Schweinhaut Senior Center  
Silver Spring, MD  
Saturday, April 14, 12 Noon  
Sunday, April 15, 11 A.M.

#### **First Weekend: Southern Site**

Comfort Inn Monticello  
Charlottesville, VA  
Saturday, April 14, 12 Noon  
Sunday, April 15, Time TBA

#### **Second Weekend: For all qualified teams**

White Oak Community Center  
**B Bracket: both days; C Bracket: Sunday only unless large turnout**  
Saturday, May 5, 12 Noon  
Sunday, May 6, 11A.M. ... Finals