

# District

LAST MAILED ISSUE — See President's Message on page 2 for details

see  
2016-2017  
GNT FAQ  
on page  
18



## 2016-2017 Grand National Teams FAQ

### 1. What is the Grand National Teams (GNT)?

The GNT is a grass roots event in which you start by qualifying at a club, a Unit game, or at a Non-Life Master tournament. Then you compete at the District level. If you win your flight, you will represent our District at the 2017 Summer Nationals in Toronto, Canada.

WWW

## **District 6 TableTALK**

### **EDITORIAL BOARD**

Bill Cole, PUBLISHER  
Donna Rogall, CREATIVE DIRECTOR, EDITOR  
Lucy McCoy, MANAGING EDITOR  
Steve Robinson, CIRCULATION MANAGER  
Ellen Cherniavsky, MAILING LIST ● ● ● ●

CONTRIBUTING EDITORS:  
Barbara Doran, Margot Hennings

COLUMNISTS:  
Steve Robinson, Shawn Stringer,  
Margot Hennings, Sylvia Shi

### **DISTRICT SIX OFFICERS**

ACBL District 6 Director:  
Margot Hennings

Margot1Obridge@cox.net

President: Shawn Stringer  
shstringer@aol.com

Vice President: George Lewis  
george.lewis@conquestgraphics.com

Secretary: Susan B. MacLaughlin  
sbmak121@comcast.net

Treasurer: Ron Spieker  
tip001@verizon.net

Immediate Past President: Don Berman  
don.berman@verizon.net

### **UNIT PRESIDENTS**

**Unit 109: Richmond:** Barry Fratkin  
fratco@mac.com

**Unit 110: Peninsula:** Ron Alldaffer  
balldaffer@charter.net

**Unit 135: Maryland:** Ron Conlon  
rjconlon@hotmail.com

**Unit 139: Piedmont:** David Butler  
dbutler934@aol.com

**Unit 146: VA State:** Brian Boyce  
brian@bfboyce.com

**Unit 147: Wash. DC:** Ellen Cherniavsky  
eachernia@yahoo.com

**Unit 218: Northern Va:** Ron Kral  
RonKral@gmail.com

**Unit 231: SW Virginia:** Rich Rio  
richrio428@yahoo.com

Send comments or inquiries to Lucy McCoy,  
Managing Editor at lucymccoy@verizon.net

Any requests for changes to  
the mailing list must be sent  
directly to the ACBL at:

● ● ● ● AddressChange@ACBL.org

# DISTRICT **6** Table

## **PRESIDENT'S MESSAGE**

Starting with the first full issue in 2017, District 6 (D6) will no longer mail *TableTALK*. Copies of the magazine will be available to our members in different ways. Players may pick up copies of *TableTALK* at all of our regionals. In addition, copies will be sent to all Unit presidents, who will be responsible for distributing the magazine to clubs and sectionals.

This decision was the result of a survey of our members that indicated to the D6 Board that an increasing number of players get their bridge information from the Internet instead of from printed publications. This change in distribution allows D6 to make better use of technology and at the same time to reduce environmental waste. The significant cost savings will be used to defray the costs of replacing and upgrading equipment including printers, table mats, bid box inserts, boards and playing cards.

District 6 will continue to post *TableTALK* to the D6 website. Also, players who want to continue to have a written copy mailed to them will be able to pay a nominal cost of \$10.00 for a subscription. Subscription details will be provided in our next issue.

### **Summer 2016 North American Bridge Championships (NABCs):**

The NABCs that took place in Washington, DC at the end of July were a great success. The D6 Board appreciates the efforts of so many hard-working D6 players who expended their time and efforts to do so many jobs that contribute to a successful event. Special thanks go to Margot Hennings of Northern Virginia, and Susan Bowles of Virginia Beach who served as co-Chairs of the NABCs and who put in countless hours, days, months and truly years of dedicated service to make the NABC an event that our District was proud to support.

—Shawn Stringer,  
301-275-6363, shstringer@aol.com

TO GET ON AN EMAIL LIST FOR **BRIDGE NEWS & BRIDGE PROBLEMS**, SEND A  
NOTE REQUESTING SUCH TO STEVE ROBINSON AT ROBINSWR1941@GMAIL.COM



## **idbids**

page

### **District 6 President's**

**Message** . . . inside cover  
Shawn Stringer

### **D7 Regional: Charleston, SC**

Dec 27-Jan 2 . . . . .2

### **D7 Regional: Wilmington, NC**

Jan 23-29 . . . . .4

### **District 6 STaCs:**

Nov 7-13, Dec 12-18, &  
Jan 10-16 . . . . .12

### **2016-17 Grand National**

**Teams—FAQ** . . . . .18

### **1-Year District 6**

**Calendar of Events** . .20

### **2016-17 Grand National**

**Teams—Get Your Team Together!** . . . . .back cover



## **Ace Analyses**

page

### **DC NABC & District**

**Director Report**  
from District Director  
Margot Hennings . . . . .6

### **Robinson's Roundtable**

Defense to Transfer  
Responses . . . . .9  
by Steve Robinson



## **Locating Games**

### **REGIONALS**

page

#### **Norfolk, VA**

Nov 14-20 . . . . .3

#### **Richmond, VA**

May 23-29 . . . . .5

### **SECTIONALS**

#### **Charlottesville, VA**

Dec ~~9-11~~ 2-4 . . . . .9

#### **Silver Spring, MD**

Jan 5-8 . . . . .10

#### **Norfolk/Va Beach, VA**

Jan 6-8 . . . . .11

#### **Richmond, VA**

Jan 20-22 . . . . .12

#### **Baltimore, MD**

Feb 3-5 . . . . .13

#### **Fairfax, VA**

Feb 16-19 . . . . .14

#### **Williamsburg, VA**

Feb 24-26 . . . . .15

#### **Fredericksburg, VA**

Mar 17-19 . . . . .16

#### **Lynchburg, VA**

Mar 24-26 . . . . .17

#### **Kensington, MD NLM**

Mar 23-26 . . . . .18

#### **Norfolk/Va Beach, VA**

Mar 31-Apr 2 . . . . .19

#### **Silver Spring, MD**

Apr 6-9 . . . . .20



## **Keeping Winners**

page

### **Washington, DC NABC**

D6 National Winners . . .6

### **2016-17 North American**

**Pairs** —District 6  
Winners . . . . .8

### **Hunt Valley, MD**

D6 Regional Winners . . .9

### **District 6 TableTALK**

(ISSN#1543-3978)

TableTALK cannot guarantee postal delivery. If you miss an issue, please see:

[www.districtsix.org](http://www.districtsix.org)  
[www.mabcbridge.org](http://www.mabcbridge.org)  
or [www.acbl.org](http://www.acbl.org)

for tournament information.







# NORFOLK, VA MID-ATLANTIC REGIONAL

**Norfolk Waterside Marriott:** 235 E. MAIN ST.  
 CALL 1-800-228-9290 OR 757-627-4200  
 NORFOLK, VA 23510

—AND MENTION "BRIDGE" FOR THE \$107 BRIDGE RATE

\*Free parking & free Wifi for hotel guests\* **Nearby Attractions** include (most within walking distance): MacArthur Memorial, MacArthur Mall, Nauticus Museum, Battleship Wisconsin, Chrysler Museum, Harbor Cruises, and many more.

 **Fine Virginia hospitality every night**  **Plenty of restaurants within walking distance** 

*Come to  
Tidewater and  
play bridge  
with us!*



## Popular District 6 Intermediate Newcomer Program

• **Five Gold Rush pair games** • **I/N games every session** • **Expert speakers before afternoon and evening games**

STARTS DETERMINED BY MP AVERAGES,  
 BUT NO SINGLE PLAYER MAY EXCEED THE EVENT'S LIMIT

### MONDAY, NOVEMBER 14

Open Pairs 1500/3000/3000+ .....1 & 7  
 Ensign **GOLD RUSH** Pairs .....1 & 7  
 I/N Pairs 5/20/50 & 100/300/500 .....1 / 7  
 Semper Fi KO .....1 & 7

*Continues 1 & 7 Tuesday*

Nauticus Side Series (1st, 2nd of 5) .....1 / 7  
 Stratified Charity Swiss Teams .....7

*Afternoon games benefit ACBL Ed. Foundation  
 Evening games benefit Toys for Tots*

### TUESDAY, NOVEMBER 15

Chrysler Compact KO .....9  
*Two 12-board matches; continues 9 am Wed.*  
 Nauticus Side Series (3rd, 4th, 5th of 5) 9 / 1 / 7  
 I/N Pairs 5/20/50 & 100/300/500 .....9 / 1 / 7

*0-5 MP players FREE today*

Open Pairs 1500/3000/3000+ .....1 & 7  
 Captain **GOLD RUSH** Pairs .....1 & 7  
 MacArthur KO .....1 & 7

*Continues 1 & 7 Wednesday*

Stratified Swiss Teams .....7  
 I/N Swiss Teams 100/300/500 .....7

### WEDNESDAY, NOVEMBER 16

Elizabeth River Compact KO .....9  
*Two 12-board matches; continues 9 am Thu.*  
 Waterside Side Series (1st, 2nd, 3rd of 6) 9 / 1 / 7  
 I/N Pairs 5/20/50 & 100/300/500 .....9 / 1 / 7

Early Bird Open Pairs 1500/3000/3000+ .9 & 1  
 Early Bird **GOLD RUSH** Pairs .....9 & 1  
 Freemason KO .....1 & 7

*Continues 1 & 7 Thursday*

Stratified Swiss Teams .....7  
 I/N Swiss Teams 100/300/500 .....7

### THURSDAY, NOVEMBER 17

Marriott Compact KO .....9  
*Two 12-board matches; continues 9 am Fri.*

Waterside Side Series (4th, 5th, 6th of 6) 9 / 1 / 7  
 I/N Pairs 5/20/50 & 100/300/500 .....9 / 1 / 7  
 Open Pairs 1500/3000/3000+ .....1 & 7  
 A/X Swiss 0-5000/5000+ .....1 & 7  
 Bracketed B Teams 0-3000 .....1 & 7  
*8 teams per bracket; 3 in each win gold*

Stratified Swiss Teams .....7

### FRIDAY, NOVEMBER 18

Old Dominion Compact KO .....9  
*Two 12-board matches; continues 9 am Sat.*

USS Wisconsin Side Series (1st, 2nd of 4) .9 / 1  
 I/N Pairs 5/20/50 & 100/300/500 .....9 / 1 / 7  
 Open Pairs 1500/3000/3000+ .....1 & 7  
 Commander **GOLD RUSH** Pairs .....1 & 7  
 Scope KO .....1 & 7  
*Continues 1 & 7 Saturday*

Ghent Side Series (1st of 4) .....7

Stratified Swiss Teams .....7  
 I/N Swiss Teams 100/300/500 .....7

### SATURDAY, NOVEMBER 19

Stratified Swiss Teams .....9  
 USS Wisconsin Side Series (3rd, 4th of 4) .9 / 1  
 I/N Pairs 5/20/50 & 100/300/500 .....9 / 1 / 7  
 Open Pairs 1500/3000/3000+ .....1 & 7  
 Admiral **GOLD RUSH** Pairs .....1 & 7  
 Granby Street KO .....1 & 7  
*Continues 10 am & TBA Sunday*

Ghent Side Series (2nd of 4) .....7

Stratified Board-a-Match Teams .....7  
 I/N Swiss Teams 100/300/500 .....7

### SUNDAY, NOVEMBER 20

*Seven 7-board matches with short lunch break*  
 A/X Swiss 0-5000/5000+ .....10 & TBA  
 Bracketed B Teams 0-3000 .....10 & TBA  
*8 teams per bracket; 3 in each win gold*  
 Ghent Side Series (3rd, 4th of 4) .....10 / 2  
 I/N Pairs 5/20/50 & 100/300/500 .....10 / 2

- ALL KNOCKOUTS (KOs) ARE BRACKETED, RANDOM DRAW & INCLUDE 0-300 MP PLAYERS
- 1- & 2-BRACKET KOs ARE HANDICAPPED
- OPEN EVENTS & SIDE SERIES, ARE STRATIFIED 0-750/750-3000/3000+, UNLESS NOTED
- I/N EVENTS STRATIFIED BASED ON ATTENDANCE
- GOLD RUSH PAIRS (0-300/300-750) AWARD GOLD POINTS TO OVERALL WINNERS AND 0-750 SECTION TOPS; RED POINTS TO 0-300 START

### Partnerships

**Shary Schlain**

sharyschlain@cox.net  
 (757) 481-7897  
 (757) 339-2894

### Tournament Chairs

**Brian Boyce**

brian@bfboyce.com,  
 (757) 412-4925  
 (757) 434-0792

**Jennifer Christman**

jchristman8@cox.net  
 (757) 427-1244  
 (757) 574-7118



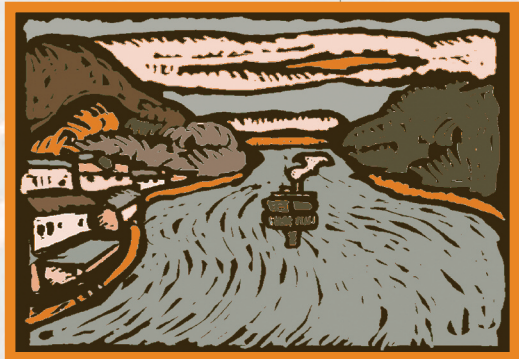
## Hilton Riverside

**301 N. Water Street \* (910) 763-5900**

\$105 room rate for bridge players through Jan. 17, 2017

All rooms have coffee pots, hair dryers, and irons. Free shuttle from Wilmington International Airport (via Hilton). To reserve online, go to <http://www.hilton.com/en/hi/groups/personalized/1/ILMNCHF-MAB-20170122/index.jhtml>

Parking \$11/day at the Hilton. Parking in downtown parking decks 4-6 blocks away for \$8/day, possible shuttle from free parking across the river (check the website/daily bulletin for details later)



### Tournament Features

- \* In the heart of the historic Port City, 25 minutes from Wrightsville Beach & the Atlantic Ocean.
- \* Easy walking to dozens of quality downtown restaurants
- \* Seven **GOLD RUSH** events for 0-750 MP players, including two 2-session morning Swisses
- \* Prizes for section tops and overall winners
- \* Excellent Intermediate/Novice program w/expert lectures

#### TOURNAMENT CO-CHAIRS

**Larry Harding**

(910) 270-9810, [larry.harding57@gmail.com](mailto:larry.harding57@gmail.com)

**Jaca Baynes**

(910) 793-9678, [jacabaynes@gmail.com](mailto:jacabaynes@gmail.com)

#### PARTNERSHIPS

**Eldon Clayman, (828) 439-1283, [brdgbums@hci.net](mailto:brdgbums@hci.net)**

- STRATS DETERMINED BY MP AVERAGES, BUT NO PLAYER MAY EXCEED EVENT'S LIMIT
- REGIONAL-RATED EVENTS IN ALL CAPS

*UNLESS NOTED OTHERWISE:* ► SINGLE-SESSION OPEN GAMES ARE STRATIFIED 750/3000/3000+ ► TWO-SESSION OPEN GAMES 1500/3000/3000+ ► GOLD RUSH EVENTS (0-750 MP) AWARD GOLD POINTS TO OVERALL WINNERS AND SECTION TOPS IN 0-750; RED POINTS TO 0-300 STRAT ► NON-LIFE MASTER (49ER AND 499ER) GAMES STRATIFIED AT DIRECTOR'S DISCRETION ► ALL KOs ARE BRACKETED, RANDOM DRAW WITH NO PLAYBACKS UNTIL UNAVOIDABLE. ONE- AND TWO-BRACKET KNOCKOUTS ARE HANDICAPPED. ► BRACKETED SWISS DIVIDED AT DIRECTOR'S DISCRETION BUT GENERALLY ALL BUT THE TOP BRACKET HAS 7 OR 8 TEAMS.

### MONDAY, JAN 23

Wilmington KNOCKOUT ..... 1:00 & 7:00  
 Continues 1:00 & 7:00 Tuesday  
 STRATIFIED OPEN PAIRS ..... 1:00 & 7:00  
**GOLD RUSH PAIRS** ..... 1:00 & 7:00  
 Wrightsville Side Series (1st, 2nd of 4) 1:00 / 7:00  
 NLM 49er & 499er Pairs ..... 1:00 / 7:00  
 Stratified Swiss Teams ..... 7:00  
 NLM 499er Swiss Teams ..... 7:00  
*Aft pair games benefit ACBL Charity Foundation*

### TUESDAY, JAN 24

**Players with fewer than 5 MP play free today**

Sand Dollar COMPACT  
 KNOCKOUT ..... 9:00  
*Continues 9:00 Wednesday*  
 Morning Side Series  
 (1st of 5) ..... 9:00  
 Earlybird NLM  
 49er & 499er Pairs ... 9:00  
 Brunswick  
 KNOCKOUT ... 1:00 & 7:00  
*Continues 1:00 & 7:00 Wednesday*

STRATIFIED OPEN PAIRS ..... 1:00 & 7:00  
**GOLD RUSH PAIRS** ..... 1:00 & 7:00  
 Wrightsville Side Series (3rd, 4th of 4) 1:00 / 7:00  
 NLM 49er & 499er Pairs ..... 1:00 / 7:00  
 Stratified Board-a-Match Teams ..... 7:00  
 NLM 499er Swiss Teams ..... 7:00

### WEDNESDAY, JAN 25

River Walk Two-session OPEN SWISS TEAMS 9:00  
 River Walk Two-session  
**GOLD RUSH SWISS TEAMS** ..... 9:00  
*Two-session Swisses continue 9:00 Thursday*  
 Morning Side Series (2nd of 5) ..... 9:00  
 Earlybird NLM 49er & 499er Pairs ..... 9:00  
 Riverboat KNOCKOUT ..... 1:00 & 7:00  
*Continues 1:00 & 7:00 Thursday*  
 STRATIFIED OPEN PAIRS ..... 1:00 & 7:00  
**GOLD RUSH PAIRS** ..... 1:00 & 7:00  
 Water Taxi Side Series (1st, 2nd of 4) .1:00 / 7:00

### WEDNESDAY, continued...

NLM 49er & 499er Pairs ..... 1:00 / 7:00  
 Stratified Swiss Teams ..... 7:00  
 NLM 499er Swiss Teams ..... 7:00

### THURSDAY, JAN 26

Shell Island COMPACT KNOCKOUT ..... 9:00  
*Continues 9:00 Friday*  
 Earlybird NLM 49er & 499er Pairs ..... 9:00  
 Morning Side Series (3rd of 5) ..... 9:00  
 Battleship KNOCKOUT ..... 1:00 & 7:00  
*Continues 1:00 & 7:00 Thursday*

STRATIFIED OPEN PAIRS ..... 1:00 & 7:00  
**GOLD RUSH PAIRS** ..... 1:00 & 7:00  
 Water Taxi Side Series (3rd, 4th of 4) .1:00 / 7:00  
 NLM 49er & 499er Pairs ..... 1:00 / 7:00  
 Stratified Board-a-Match Teams ..... 7:00  
 NLM 499er Swiss Teams ..... 7:00

### FRIDAY, JAN 27 - GOODWILL DAY

Coastline Two-session OPEN SWISS TEAMS .9:00  
 Coastline Two-session  
**GOLD RUSH SWISS TEAMS** ..... 9:00  
*Two-session Swisses continue 9:00 Saturday*

Morning Side Series (4th of 5) ..... 9:00  
 Earlybird NLM 49er & 499er Pairs ..... 9:00  
 UNCW Seahawks KNOCKOUT ..... 1:00 & 7:00  
*Continues 1:00 & 7:00 Saturday*

STRATIFIED OPEN PAIRS ..... 1:00 & 7:00  
**GOLD RUSH PAIRS** ..... 1:00 & 7:00  
 Trolley Side Series (1st, 2nd of 6) ... 1:00 / 7:00  
 NLM 49er & 499er Pairs ..... 1:00 / 7:00  
 Stratified Swiss Teams ..... 7:00  
 NLM 499er Swiss Teams ..... 7:00

### SATURDAY, JAN 28

Morning Side Series (5th of 5) ..... 9:00  
 Earlybird NLM 49er & 499er Pairs ..... 9:00  
 BRACKETED SWISS TEAMS ..... 1:00 & 7:00  
 OPEN PAIRS (750/3000/3000+) ... 1:00 & 7:00  
 Trolley Side Series (3rd, 4th of 6) ... 1:00 / 7:00  
 NLM 49er & 499er Pairs ..... 1:00 / 7:00

### SUNDAY, JAN 29

OPEN SWISS TEAMS ..... 9:30 & TBA  
**GOLD RUSH SWISS TEAMS** ..... 9:30 & TBA  
*Above Swisses are two-sessions with short break*  
 NLM 499er Swiss Teams ..... 9:30  
 Trolley Side Series (5th, 6th of 6) ... 9:30 / 1:30  
 NLM 49er & 499er Pairs ..... 9:30



**ALL EVENTS IN TWO  
LARGE BALLROOMS!**

**Doubletree by Hilton  
Richmond-Midlothian  
(804) 379-3800**

10800 Midlothian Turnpike, Richmond, Va 23235

BRIDGE RATE OF \$90.00+TAX—CALL EARLY.  
HOTEL WILL SELL OUT. BRIDGE RATE GOOD UNTIL  
MAY 4. 2-NIGHT MINIMUM WHEN BOOKING FOR  
FRIDAY NIGHT. RESERVATIONS FOR MORE THAN  
ONE NIGHT THAT ARE CANCELED AFTER CUT-OFF  
DATE OR DURING TOURNAMENT ARE SUBJECT TO  
ONE-NIGHT CHARGE.

**DIRECTIONS**

**From North** — Take Exit 79 off I-95 to Powhite  
Parkway, Exit Rt. 60 West Midlothian Turnpike,  
after 2 miles turn right onto Koger Center Blvd.

**From South** — Take I-95 North to Exit 67  
Chippenhams Parkway - 10 miles to Exit Rt. 60 West,  
after about 5 miles turn right onto Koger Center Blvd.

**From West** — I-64 East to I-195, follow to Powhite  
Parkway and follow rest of North's directions.

**From East** — I-64 to I-95 North to Exit 79 and  
follow North's directions.

★ Plenty of **Free Parking** ★

Seven **Gold Rush Games** ★ Many  
**Restaurants** Within Minutes of Hotel ★

Fabulous **Intermediate-Newcomer Program**  
includes Saturday afternoon **NOVICE NOSH**.  
**Partners** and **Teammates** guaranteed one  
hour before game time. Bridge **Lectures** daily  
& **Prizes** for all winners. **Immediate results**  
through **FastResults** and **ACBL Live**.

ALL KOs ARE BRACKETED AND RANDOM DRAW; ONE- AND  
TWO-BRACKET KOs HANDICAPPED; NO PLAYBACKS BELOW  
TOP BRACKET IF POSSIBLE

**TUESDAY, MAY 23**

Midlothian KO .....1 & 7  
*Continues 1 & 7 Wednesday*

Open Pairs 1500/3000/3000+ .....1 & 7  
GOLD RUSH Pairs .....1 & 7  
Powhatan Side Series (1st & 2nd of 4) .....1 / 7  
I/N Pairs 5/20/50 & 100/300/500 .....1 & 7  
Charity Swiss Teams .....7  
*Afternoon games benefit ACBL Ed. Foundation  
Evening games benefit local charity*

**WEDNESDAY, MAY 24—0-5 MP players FREE today**

Petersburg Compact KO .....9  
*Two 12-board matches; continues 9 am Thursday*  
Chesterfield Morning Side Series (1st of 5) .....9  
I/N Pairs 5/20/50 & 100/300/500 .....9 / 1 / 7



**WEDNESDAY, continued...**

Hanover KO .....1 & 7  
*Continues 1 & 7 Thursday*

Open Pairs 1500/3000/3000+ .....1 & 7  
GOLD RUSH Pairs .....1 & 7  
Powhatan Side Series (3rd & 4th of 4) .....1 / 7  
Stratified Board-a-Match Teams .....7  
I/N Swiss Teams 100/300/500 .....7

**THURSDAY, MAY 25**

Henrico Two-session Open Swiss .....9  
Henrico Two-session GOLD RUSH Swiss .....9  
*Two-session Swiss events continue 9 am Friday*  
Chesterfield Morning Side Series (2nd of 5) .....9  
I/N Pairs 5/20/50 & 100/300/500 .....9 / 1 / 7  
Ashland KO .....1 & 7  
*Continues 1 & 7 Friday*

A/X Pairs 0-5000/5000+ .....1 & 7  
Mid-flight Pairs 0-1500/3000 .....1 & 7  
GOLD RUSH Pairs .....1 & 7  
Prince George Side Series (1st & 2nd of 4) ...1 / 7  
Stratified Swiss Teams .....7

**FRIDAY, MAY 26**

Glen Allen Compact KO .....9  
*Two 12-board matches; continues 9 am Saturday*  
Chesterfield Morning Side Series (3rd of 5) .....9  
I/N Pairs 5/20/50 & 100/300/500 .....9 / 1 / 7  
Open Swiss Teams 0-5000/5000+ .....1 & 7  
Mid-flight Swiss Teams 0-1500/3000 .....1 & 7  
GOLD RUSH Swiss Teams .....1 & 7  
Open Pairs 1500/3000/3000+ .....1 & 7  
Prince George Side Series (3rd & 4th of 4) ...1 / 7  
Stratified Swiss Teams .....7

[WWW.DISTRICTSIX.ORG](http://WWW.DISTRICTSIX.ORG)

**Tournament Chairs**

**Jacki Shuman and George Lewis**  
(804) 307-4304 or [richmondregional@aol.com](mailto:richmondregional@aol.com)

**Partnerships: John Kloke**  
(804) 356-0029, [john@kbsmanage.com](mailto:john@kbsmanage.com)

**Alternative Housing Information:**

Contact tournament chairs or check  
online at [www.DistrictSix.org](http://www.DistrictSix.org)

**SATURDAY, MAY 27**

James River Compact KO .....9  
*Two 12-board matches; continues 9 am Sunday*  
Chesterfield Morning Side Series (4th of 5) ....9  
I/N Pairs 5/20/50 & 100/300/500 ...9 / 1 / 7  
Mechanicsville KO .....1 & 7  
*Continues 1 & 7 Sunday*

A/X Pairs 0-5000/5000+ .....1 & 7  
Mid-flight Pairs 0-1500/3000 .....1 & 7  
GOLD RUSH Pairs .....1 & 7  
Virginia Side Series (1st & 2nd of 6) .....1 / 7  
Stratified Swiss Teams .....7

**SUNDAY, MAY 28**

Stratified Swiss Teams .....9  
Chesterfield Morning Side Series (5th of 5) .....9  
I/N Pairs 5/20/50 & 100/300/500 .....9 / 1 / 7  
Open Pairs 1500/3000/3000+ .....1 & 7  
GOLD RUSH Pairs .....1 & 7  
Short Pump KO .....1 & 7  
*Continues 10 & TBA Monday*

Virginia Side Series (3rd & 4th of 6) .....1 / 7  
Stratified Board-a-Match Teams .....7  
I/N Swiss Teams 100/300/500 .....7

**MONDAY, MAY 29**

*Seven 7-board matches with short lunch break*  
A/X/Y Swiss Teams 4000/6000/6000+ .10 & TBA  
Bracketed Flight B Teams 0-3000 .....10 & TBA  
*No player over 3000 MPs*  
*8 teams per bracket; 3 in each bracket win gold*  
Virginia Side Series (5th & 6th of 6) .....10 / 2  
I/N Pairs 5/20/50 & 100/300/500 .....10 / 2

★ STRATS DETERMINED BY MP AVERAGES, BUT NO  
PLAYER MAY EXCEED EVENT LIMIT; STRATS FOR <500  
MP EVENTS BASED ON ATTENDANCE

★ OPEN EVENTS AND SIDE SERIES ARE STRATIFIED 0-  
750/750-3000/3000+, UNLESS NOTED

★ GOLD RUSH EVENTS (0-300/300-750) AWARD  
GOLD POINTS TO OVERALL WINNERS AND 0-750 SEC-  
TION TOPS; RED POINTS TO 0-300 STRAT

★ TO BE SEEDED, PAIRS MUST BUY ENTRIES NO LATER  
THAN 15 MINUTES PRIOR TO GAME TIME



## **District Six Honor Roll** **2016 Summer NABC** **Washington, D.C.**

### **TOP TEN LISTS**

#### **District Six Members**

1	173.38	Sylvia Shi
2	115.38	Daniel Korb
3	115.03	Stephen Drodge
4	110.88	Jian-Jian Wang
5	110.72	Steve Robinson
	110.72	Peter Boyd
7	97.49	Mohsin Chandna
8	89.77	Alexander Prairie
9	89.17	David Rodney
10	88.97	Dale Sanders

#### **District Six Members with 0-3000 MPs**

1	115.03	Stephen Drodge
2	110.88	Jian-Jian Wang
3	89.77	Alexander Prairie
4	88.97	Dale Sanders
5	76.49	Larry Kahn
	76.49	H John Edmonds
7	68.08	Richard DePaulo
8	55.45	George Parkins
	55.45	Ann Atcheson
10	54.48	Janet Lee

#### **District Six Members with 0-750 MPs**

1	88.97	Dale Sanders
2	49.58	Eric Gettleman
3	46.85	David Soukup
4	44.16	Peter Schiff
5	43.73	Terry Klein
6	43.30	Michael Lentz
7	39.89	Alex Marshall
8	39.00	Randal Burns
9	35.90	James Barnes
10	35.62	Stanley Barg

#### **District Six Members with 0-300 MPs**

1	39.00	Randal Burns
2	28.97	Kun He
3	26.19	Harry Potter
	26.19	James Mosley
5	25.02	Scott Lutrey
6	24.96	Barbara Teng
	24.96	Bob Lawrence
8	24.23	Daniel Morgan
9	24.12	Jacob Hornberger
10	23.67	David Handwerker

### **OVERALL PLACINGS** **IN NATIONALLY RATED EVENTS**

*Special Congratulations to our  
1st place overall winners:*

**Alexander Prairie, Stephen Drodge,  
Jian-Jian Wang & Sylvia Shi in the  
Goldman Flight A Grand National Teams**

**Sylvia Shi in the  
NABC 0-10,000 Mixed Swiss Teams**

**David Rodney & Rusty Krauss in the  
NABC 0-10,000 Open Pairs**

#### **GRAND NATIONAL TEAMS FLIGHT A**

**1 Alexander Prairie, Arlington VA;  
Stephen Drodge, Mc Lean VA;  
Jian-Jian Wang, Clarksville MD;  
Sylvia Shi, Rockville MD**

#### **VON ZEDTITZ LIFE MASTER PAIRS**

11	Steve Robinson, Arlington VA; Peter Boyd, Darnestown MD
29	Stan Schenker - David Milton, Herndon VA
35	Michael Klein, Falls Church VA
59	Robert Bell, Silver Spring MD; Lou Reich, Wheaton MD
80	Jason Meyer, Silver Spring MD; James Geist, Olney MD
82	Mark Shaw, Columbia MD; Martin Graf, Chevy Chase MD
87	Robin Taylor - Alan Sontag, Gaithersburg MD

### **DC NABC & District** **Director Report**

**—FROM DISTRICT DIRECTOR MARGOT  
HENNINGS, [Margot10bridge@cox.net](mailto:Margot10bridge@cox.net)**

In the previous issue of *TableTALK*, I summarized what happened during the Board of Directors (BOD) meetings in Reno this past Spring and previewed what I expected to be the primary motions and issues we would be dealing with in DC at our July meetings. This report updates that preview and reports on the NABC itself, as that was an important event for this district as well.

The DC NABC was a huge success, thanks to the hours and hours of Volunteer work by both Committee Chairs and daily workers; to Chief Corporate Sponsor, Rusty Krauss of KIG; to the

*continued on pg. 7 column 2*

93	Ronald Kral, Reston VA; Jose Cortina, Oak Hill VA
96	Eugene Schuyler, Arlington VA; Bob Boyd, Alexandria VA

#### **BRUCE 0-5000 LIFE MASTER PAIRS**

2	H John Edmonds, Gaithersburg MD; Larry Kahn, Vienna VA
10	Allan Sitterson, Leesburg VA; Peter Harrington, Potomac Falls VA
28	Joseph Trapani, Hydes MD; Mark Laken, Glyndon MD
33	Jeffrey Klemm, Mc Lean VA
51	Maureen Brines - Tracy Brines, Virginia Beach VA
52	Mark Tonnesen, Woodbridge VA; Charles Pecarro, Falls Church VA

#### **YOUNG 0-1500 LIFE MASTER PAIRS**

3	Eric Gettleman, Ellicott City MD
7	Mike Ladd - Betty Ladd, Vienna VA
8	Richard Wissing, Columbia MD; Peter Van Zijl, Elkridge MD
11	John Gauss, Arlington VA; Lawrence Fox, Fairfax Station VA

#### **NABC 0-10,000 PAIRS**

<b>1</b>	<b>David Rodney, Fairfax VA; Rusty Krauss, Vienna VA</b>
2	Mohsin Chandna, Washington DC; Jay Kelkar, Oak Hill VA
4	Helene Bauman, Arlington VA; Mickie Kivel, Potomac Falls VA
6	Barry Spector, Springfield VA
12	Janet Lee, Oakton VA
17	Hal Hindman, Centreville VA
19	Annie Schwartz, Fairfax VA; David Fleischer, Alexandria VA
20	Thomas Peters, Dayton MD; Robert Rovner, Chevy Chase MD
24	Mark Chen, Oak Hill VA; Brad Theurer, Gaithersburg MD
29	Dewayne Jones, Sandston VA; Marc Warner, Crozier VA
38	Barack Peled, Reisterstown MD; Sorina Negulescu, Ellicott City MD

#### **TRUSCOTT SENIORS SWISS**

11	Margot Hennings, Annandale VA; Cecily Kohler, Washington DC
30	Richard Wegman, Bethesda MD

#### **WERNHER OPEN PAIRS**

23	Michael Gill, Columbia MD; Noble Shore, Germantown MD
28	Benjamin Pope III, Norfolk VA; Richard DePaulo, Chesapeake VA
32	Harry Gellis, Midlothian VA; Kent Massie, Lexington VA

- 34 Peter Boyd, Darnestown MD;  
Steve Robinson, Arlington VA

#### **FREEMAN MIXED B-A-M TEAMS**

- 9 Fred King, Mc Lean VA;  
Rebecca Duty, Richmond VA;  
Lynn Jones, Timonium MD;  
Paul Benedict, Pikesville MD
- 12 Li Yiting, Herndon VA;  
Jian-Jian Wang, Clarksville MD;  
Sylvia Shi, Rockville MD;  
Beth Palmer, Chevy Chase MD;  
William Cole, Silver Spring MD

#### **0-5000 MINI SPINGOLD KNOCKOUT TEAMS**

- 3/4 Dale Sanders, Washington DC;  
Terry Klein, Brookeville MD
- 9/16 Jose Cortina - Debnarayan Dhar,  
Oak Hill VA; Steve Bunning, Vienna  
VA; Mel Yudkin, Annandale VA

#### **NABC 0-10,000 MIXED SWISS TEAMS**

- 1 Sylvia Shi**, Rockville MD
- 4 Mickie Kivel, Potomac Falls VA
- 6 Alan Tenenbaum - Mary  
Tenenbaum, Rockville MD;  
Ann Lindley - Alfred Duncker,  
Gaithersburg MD
- 7 Jim Wakefield, Fairfax Station VA;  
Helene Bauman, Arlington VA
- 10 David Fleischer, Alexandria VA;  
Angelo Zuccaro, Arlington VA;  
Carole Banks, Silver Spring MD;  
Lucy McCoy, Annandale VA

#### **BEAN RED RIBBON PAIRS**

- 4 Art McCann, Finksburg MD;  
David Grabiner, Columbia MD
- 12 Mary Peters - Thomas Peters,  
Dayton MD
- 14 Jeffrey Kosnett, Gaithersburg MD;  
Eugene Fisher, Potomac MD
- 15 Ryan Connors, Alexandria VA
- 16 Jim Gaarder, Columbia MD;  
Jimmy Ritzenberg, Bethesda MD
- 27 Joel Mashbaum, Ellicott City MD;  
Robert Dewey, Columbia MD
- 29 Richard Wissing, Columbia MD;  
Peter Van Zijl, Elkridge MD
- 30 M Bruce Todd, Salisbury MD;  
Fletcher Thompson, Annapolis MD
- 33 Joe Siqueira - Peter Haglich,  
Virginia Beach VA
- 35 Karen Kreutzberg - Thomas  
Sanzone, Blacksburg VA

#### **ROTH OPEN SWISS TEAMS**

- 16 Steve Robinson, Arlington VA;  
Peter Boyd, Darnestown MD
- 25 Daniel Korbel, Rockville MD

#### **DC NABC, cont. from p 6**

many sponsors throughout the district of the “named games” on the schedule; to the local “pros” and buyers for the auction proceeds that contributed to the ability of the tournament to offer discounted parking to commuters; and to Co-Chair Susan Bowles for her attention to detail, her imaginative ideas, and her steadfast dedication in the weeks leading up to the tournament as well as on-site during it. The table count was a bit under the ACBL estimate of 13,000, with local player attendance no doubt hindered by the non-stop work on metro, but all of those who attended were treated to our famous D6 hospitality, including a terrific performance by the Capitol Steps, nightly snacks, daily snack bar coupons for the two-session day-game players, and an outstanding Intermediate/Newcomer Program. There is not room to name all of the people who worked so hard throughout, so I will be sure that a list is posted on the D6 website as an appendix to this report.

#### ***Congratulations to D6 Members on Top-10 NABC Event Finishes in Your Home Town NABC (and oh by the way, a world crown for D6 women)!***

Sylvia Shi leads the list as a double winner of NABC events—she is certainly a rising star and in addition to her continuing accumulation of NABC “firsts,” is now the proud owner of a gold medal after posting a first-place finish together with her partner Beth Palmer, a many-time world champion, in Poland this past September in the World Women’s Teams. Congratulations to both Sylvia and Beth—this is a great accomplishment!

At the DC NABC, Sylvia’s team won both the 10,000 MP (10K) Mixed Swiss, and together with partner and teammates JJ Wang, Stephen Drodge, and Alex Prairie, the Flight A GNT. The 10K Mixed Swiss was kind to a number of D6 partnerships with Mary and Alan Tenenbaum/Ann Lindley/Al Duncker coming in 6<sup>th</sup>, Jim Wakefield and Helene Bauman 7<sup>th</sup>, and David Fleischer/Carole Banks/Angelo Zuccaro/Lucy McCoy 10<sup>th</sup>. The 10K Pairs also saw multiple partnerships from D6 do very well with Rusty Krauss and David Rodney scoring a win in that event, Jay Kelkar and Mohsin Chandna coming in 2<sup>nd</sup>, Helene Bauman and Mickie Kivel 4<sup>th</sup>, and Barry Spector with former D6 partner Randy Thompson 6<sup>th</sup>. Fred King/Becky Duty/Lynn Jones/Paul Benedict were 9<sup>th</sup> in the Mixed BAM; John Edmonds and Larry Kahn were 2<sup>nd</sup> in the 5K LMs with Al Sitterson and Peter Harrington 10<sup>th</sup>, Dale Sanders and Terry Klein were 3/4 in the 5K Mini-Spingold and Jose Cortina/Steve Bunning/Debnarayan Dhar/

Mel Yudkin were 9/16. Art McCann and David Grabiner were 4<sup>th</sup> in the Red Ribbon Pairs. Michael Lentz coming in 3/4 in the 1500 Mini-Spingold rounded out the high finishers by D6 members. Lots of moments where D6 players could be very proud. *For a complete list of those who did well at the DC NABC, please see page 6 of this issue of TableTALK.*

#### ***In-depth Planning Sessions***

ACBL President Ken Monzingo continued to set aside significant blocks of time for in-depth discussion of specific issues that can impact the success or failure of our Strategic Plan. Three key areas were discussed in DC:

**The Strategic Plan Itself:** A set of metrics and an analysis of our strategic projects (see my more detailed accounting in the previous issue of TableTALK) will be used going forward to assess progress. These can be found at <http://web2.acbl.org/documentLibrary/about/strategic2016.pdf> and at <http://web2.acbl.org/documentLibrary/about/MetricsScorecard.pdf>.

**Board Composition:** A 9-member Board Composition Committee (3 members of the BOD, 3 of the BOG and 3 at-large, including Daniel Korbel from D6) was formed this year to address issues of Board functionality and costs. In its first report to the full BOD, the Committee addressed issues of Board size (25 members, one from each ACBL District), how members are selected (currently through election by voting Unit members of each respective district), and how the BOD and the Board of Governors (BOG) interact. Their proposals were discussed on-site in DC by small focus groups including members of the Committee, the full BOD, and other interested parties, among them Harriette Buckman (former ACBL President) and Greg Humphreys (D6 member active in ACBL technology discussions). Feedback from these groups is being taken into consideration by the Committee and another report will be forthcoming this Fall in Orlando. The Governance Committee will also be proposing some changes in Orlando to address such things as frequency of meetings and structure of all BOD Committees.

#### ***Progress Against High-level Cheating***

The world of bridge and beyond has been replete with many articles in national and international publications about the years-long cheating escapades of some of the highest ranked players in the world, thankfully none American. Following initial accusations by Boye Brogland (who received the 2016 Sidney Lazard

continued on pg. 8

Sportsmanship Award at the Hall of Fame Dinner this summer at the DC NABC), Volunteers (some from among our best-known players here in D6) spent countless hours viewing video enabling the ACBL, as charging and prosecuting party, to bring a solid case to the Ethical Oversight Committee in DC. As a result, Fulvio Fantoni and Claudio Nunes of Italy and Lotan Fischer and Ron Schwartz of Israel were all found guilty of collusive cheating and permanently expelled from the ACBL. Both pairs lost all their masterpoints. Partners and teammates of the expelled pairs are subject to mandatory forfeiture of all masterpoints, titles and status ranks earned during the four years preceding the finding of guilt while playing with them.

**Key Actions in DC**

**NT Openers:** In a slight change from the motion as presented for approval in DC, what was passed by the BOD is the following: A notrump opening or overcall is natural if, by agreement, it contains no void, at most one singleton, which must be the A, K, or Q and no more than two doubletons. If the hand contains a singleton, it may have no doubleton.

**Alignment of Masterpoint Limits for Summer NABC Events:**

The limits of the Bruce LM Pairs and Mini-Spangold were raised to 6000 (from 5000) and the Young LM Pairs and "Micro"-Spingold from 1500 to 2500. This was done to parallel recent changes to the increased masterpoint limits for the GNIs. To make it possible to play in both the 0-10,000 Pairs and the lower Spingolds, the starts of the 6000 MP and 2500 MP Spingolds were moved to Tuesday.

**Conditions of Contest:** For the 2016/17 and 2017/2018 Collegiate Bridge Bowl, on-site, face-to-face finals (in Toronto at the Summer NABC in 2017) will be held for the top eight teams. This change from the four teams of the previous two years was made based on an extensive

survey of past Collegiate Bridge Bowl participants. The added expense of bringing the extra four teams to the next two Summer NABCs will be borne by an anonymous donor who is a long-time advocate of Junior bridge programs.

**Tournament Assistant (TA) Accreditation for Work at Sectionals:** A motion regarding the ability of TAs to work at Sectionals was passed: TAs must pass the TA accreditation exam and be approved by the Director-in-Charge of the tournament. Local Directors may no longer work at Sectionals without having passed the TA accreditation exam.

**Major Revisions to the Recorder Regulations:** At the recommendation of the Bridge Integrity Task Force, revisions to deal

**Miscellaneous:**

-The cost of Junior Memberships was reduced from \$15 to \$5, continuing all current benefits and substituting an electronic Bulletin for the mailed Bulletin.

-Motions related to allowing high school championships in the form of sectionals and regionals were defeated because it was demonstrated that there are already regulations in effect that allow these.

-A proposed motion to lengthen the term of the ACBL President from one year to two was defeated.

-The non-member entry surcharge for American Bridge Association (ABA) members was waived through calendar year 2017. (ABA

President Hank Irwin spoke to the BOD prior to the passage of this new regulation and stressed the need for continuing cooperation across these two major bridge organizations.)

-A motion to approve the 2021 Summer NABC in Providence, RI was passed.

**Request for Reconsideration from the Board of Governors (BOG):** In Reno this past Spring, the BOD passed a motion to stop providing voting results by Unit in District-wide races to the BOD as well as the candidates. This

motion was presented by Management as a result of some complaints from some small Units that this essentially violated individual voters' right to a secret ballot. At its Reno meeting, the BOG voted to send the motion back to the BOD for reconsideration. This motion was duly reconsidered in DC, and the right of a candidate to see the results of the vote was upheld and the original practice was restored. The decision from Reno was carefully considered by all members and the resulting decision in DC was not an easy one.

As always, contact me with any questions at [margot10bridge@cox.net](mailto:margot10bridge@cox.net). -Margot

**2016-2017 North American Pairs—District Winners**

The North American Pairs district finals concluded on September 25th.

Impressively, in flight A, Mike Gill and Noble Shore won with two solid sessions after entering the second day as the last place qualifier. Congrats and good luck to all qualifiers who will compete at the final stage in Kansas City, MO at the 2017 Spring NABC.

Flight A	Flight B	Flight C
<p><b>1. Noble Shore</b> <b>Michael Gill</b></p> <p>2. Eugene Kales Richard Ferrin</p> <p>3. Daniel Korbel Sylvia Shi</p>	<p><b>1. Adam Gann</b> <b>Zachary Madden</b> <i>(1st North)</i></p> <p>2. Michael Kelley, Leah Shao <i>(1st South)</i></p> <p>3. Thomas Peters, Robert Rovner <i>(2nd North)</i></p> <p>4. Albert Lauber, James Beller <i>(Next highest %)</i></p>	<p><b>1. Philip Sticha</b> <b>Randall Stephens</b> <i>(1st North)</i></p> <p>2. Michael Haddox, Schatz William Vandyke <i>(1st South)</i></p> <p>3. Anne Weismann, Karen Sandler <i>(3rd overall North)</i></p> <p>4. Jack Spooner, Donnie Walsh <i>(2nd South)</i></p>

more effectively with ethical violations were made to the Recorder Regulations. The most significant of these guarantees Reporter confidentiality. Please go to the ACBL website to see the full set of parameters now governing the Recorder as a result of what the BOD passed in DC. In addition, several changes were made to Appendix G of the Conditions of Contest dealing with screens (e.g., surrender of electronic devices by both players and kibitzers to be returned after all boards in the session have been played) when a Vugraph Operator is present, in order to address issues raised by the recent cheating cases.



**Hunt Valley, MD**  
**Regional Winners**  
**August 15-21, 2016**

**TOP POINT WINNERS**

**District 6 Players**

- 1 84.68 Sylvia Shi
- 2 82.23 William Cole
- 3 77.22 Fred King
- 4 69.39 William Pettis
- 5 68.31 Brad Theurer
- 6 64.71 Lynn Jones
- 7 63.92 Robert Bell
- 8 62.68 Martin Graf  
62.68 Mark Shaw
- 10 59.61 Harry Gellis

**District 6 Players <3000 MPs**

- 1 44.96 David Grabiner
- 2 43.30 Marc Warner
- 3 43.27 Art McCann
- 4 42.24 Joel Mashbaum
- 5 37.59 John Becker
- 6 36.60 Lawrence Nimmo
- 7 34.72 Michael Teague
- 8 34.10 Robert Kibler
- 9 33.94 Patricia Murty
- 10 32.90 Arthur Rocklin

**District 6 Players <750 MPs**

- 1 26.55 James Barnes
- 2 24.38 Priscilla Krueger
- 3 22.90 Terry Klein
- 4 21.64 Jane Culver
- 5 21.27 Elizabeth Fletcher
- 6 20.44 Paul Reamer
- 7 18.97 Barbara Maffei
- 8 18.93 Christine D Ambra  
18.93 Darlene Selz
- 10 18.49 Joy Oliver

**District 6 Players <300 MPs**

- 1 18.30 Martha Riviere
- 2 17.44 Mary Baril
- 3 16.35 Sherry Griffin
- 4 15.48 Marcia Goggans
- 5 15.30 Allen Jones
- 6 14.95 Douglas Lahammer
- 7 14.12 Scott Lutrey
- 8 13.69 Barbara Teng  
13.69 Bob Lawrence
- 10 13.66 Shirley Churchill

♠ Charlottesville, VA ♣ DECEMBER 2-4, 2016 ♦

***Shenandoah Valley Winter Sectional***

\* **New Dates** \* **New Location** \*



**Comfort Inn Monticello**

2097 Inn Dr, Charlottesville, VA 22911

**Reservations:** 434-977-3300

**Directions** *From I-64 Eastbound:* Exit 124 (Shadwell): Make a right at the light and take an immediate left by the island. Follow the paved driveway to the top of the hill.

*From I-64 Westbound:* Make a left at the light, pass the overpass and make a left at the island. Follow the paved driveway to the top of the hill.

*From Route 29:* Take the ramp to 250 East Bypass, drive 5 miles on 250 East Bypass, pass the overpass of I-64, stay on the 250 East Bypass and make a left at the island. Follow the paved driveway to the top of the hill.

**SCHEDULE OF EVENTS**

**FRIDAY, DECEMBER 2**

10:30 AM . . . Open Stratified Pairs or 199er Pairs  
 The entry for these games is \$11. 40% more masterpoints awarded helps fund the GNTs & NAPs

3:30 PM . . . Open Stratified Pairs or 199er Pairs

**SATURDAY, DECEMBER 3**

10:30 AM . . . Open Stratified Pairs or 199er Pairs  
 The entry for these games is \$11. 40% more masterpoints awarded helps fund the GNTs & NAPs

3:30 PM . . . Open Stratified Pairs or 199er Pairs

**Friday and Saturday Stratification Limits**

0-750, 750-2000, 2000+ (199er at Director's discretion)  
 Stratification of pairs by average masterpoints. —No individual may exceed the event's upper limit.

**SUNDAY, DECEMBER 4**

10:30 AM & TBA . . . . . Bracketed Swiss Teams  
 8 teams in each bracket, 7 rounds, play-through

*Non-Smoking  
 Tournament with  
 Hospitality Breaks*

*Free coffee, soft drinks,  
 and more ...*

**Entries**

*\$10.00/person  
 for pair games;  
 \$96.00/team—Includes  
 light lunch between  
 sessions; \$3 additional  
 per person for non or  
 unpaid ACBL members*

**Tournament Chairs**

**Betsy Ruehl**  
 540-942-3667  
 truehl@ntelos.net

**Steve Rothman**  
 434-296-1714

**55<sup>th</sup> Annual**

**~ PRESIDENTIAL TOURNAMENT ~**

at the **MARGARET SCHWEINHAUT SENIOR CENTER**

1000 Forest Glen Rd, Silver Spring, MD **(Friday-Sunday only)**

**THURSDAY, JANUARY 5**

- ♣ StrataFlighted A/X (unlim/2000) & B/C/D (1000/500/300) Pairs . . . 11:15am  
**Rockville Duplicate Bridge Club**, 301-503-3348 (Mark Lavine) **NO ENTRY TILL 11AM**  
*St. James Episcopal Church, 11815 Seven Locks Rd., Rockville*
- ♦ StrataFlighted A/X (unlim/3000) & B/C (2000/750) Pairs (*both sites*), 0-20 Pairs (*both sites*), Intermediate/Novice Pairs (500/300/100) (*Ohr Kodesh only*) & Stratified 199er (200/100/50) Swiss Teams (*Beth El only*)  
**Beth El Congregation**, 3830 Seminary Rd, Alexandria . . . . . 7:00pm  
**Ohr Kodesh Congregation**, 8300 Meadowbrook Ln., Chevy Chase 7:30pm  
I-495 to Connecticut Ave. S. 4<sup>th</sup> light left E-W Hwy 410. Left Meadowbrook Ln. 1<sup>st</sup> left Freyman Dr. Parking lot on left. No outside food allowed.

**FRIDAY, JANUARY 6**

- ♣ \*StrataFlighted A/X (unlim/3000) & B/C Pairs (2000/750) (single sessions) . . . . . 10:00am, 2:00pm
- ♦ **Stratified Triple Nickel Swiss Teams** (unlim/2000/750) . . . . . **Evening Party!** . . . . . 7:30pm  
—5 rounds, 5 boards a round, 5 minutes a board.
- ♠ Intermediate/Novice Pairs (500/300/100) & 49er Pairs (50/20/5) (single sessions) . . 10am, 2pm, 7:30pm

**♥ Panel Show & Party**



**to Honor New Life Masters between sessions**

**SATURDAY, JANUARY 7**

**Win upgraded (more) masterpoints today! \$1 additional fee supports Grass Roots events.**

- ♣ \*StrataFlighted A/X (unlim/3000) & B/C Pairs (2000/750) (single sessions) . . . . . 10:00am, 3:00pm
- ♦ Intermediate/Novice Pairs (500/300/100) & 49er Pairs (50/20/5) (single sessions) . . . . . 10:00am, 3:00pm

**SUNDAY, JANUARY 8**

**WBL Trophy Race Winners' Presentation** —Lunch available for purchase—

- ♠ Flights A/X (unlim/5000) Swiss Teams (*2 session playthrough w/break*) . . . . . 11:00am & TBA
- ♣ Bracketed Flight B Teams (no single player >3000) (*2 session playthrough w/break*) . . 11:00am & TBA  
B Teams Bracketed by total team masterpoints; three overall places in each.
- ♦ 500/300/100 Swiss Teams, VPs (single sessions) . . . . . 11:00am, 3:00pm

**♣ Lots of Intermediate & Novice Events with Silver Points! ♥**

*Separate I/N events & strata as advertised as attendance allows. (Director's discretion.)*

**Hospitality** includes snacks, drinks, & **Friday lunch & evening party.** Sunday lunch available for purchase.  
**Tournament Chair: Brad Theurer**, 301-527-8819, [bathurer256@gmail.com](mailto:bathurer256@gmail.com); **Hospitality Manager: Mike Zane**; **Volunteer Coordinator: Barbara Summers**, 301-598-5838, [jimbarb1184@aol.com](mailto:jimbarb1184@aol.com); **Partnerships: Barbara Doran**, 301-608-0347, [barb.doran@verizon.net](mailto:barb.doran@verizon.net), **Online Partnership Desk** available.

*\*StrataFlighted if attendance warrants—otherwise combined into Stratified Pairs (unlim/2000/500) Stratification by avg. masterpoints of the team or pair. No individual may exceed the event's upper limit.*

**Directions to the Margaret Schweinhaut Senior Center**, 1000 Forest Glen Rd, Silver Spring, MD: I-495 to Georgia Avenue North (toward Wheaton). 1<sup>st</sup> light right on Forest Glen Rd. The Center is .7 mile on right.



**2017...**

**Cheers to a New Year & a New Deal!**

**Defense to Transfer Responses**

More and more players are playing transfer responses to their non-forcing 1♣-opener. Technically they are "showing" bids since they only promise four cards. Playing transfers over notrump openers, partner is supposed to accept the transfer. Playing "showing bids" partner can bid whatever his system requires him to bid, and often it is not accepting the transfer. A 1♦-response is artificial and shows four or more hearts. A 1♥-response is artificial and shows four or more spades. I asked my expert panel — What defenses do you use after 1♣ - pass - 1♦, which shows four or more hearts? What defense do you use after 1♣ - pass - 1♠ which shows something other than four spades?

After 1♣ - Pass - 1♦ which shows at least four hearts, you have an extra bid. You can double 1♦ or you can bid 1♥. Higher calls can have the same meaning as if the auction went 1♣ - pass 1♥, which is natural.

For the rest of this article when I say 1♣ - 1♦, assume I'm saying 1♣ - Pass - 1♦, which shows at least four hearts, and when I say 1♣ - 1♠, assume I'm saying 1♣ - pass - 1♠, which shows something other than four spades.

The following is simple, which is what I play. Double of 1♦ shows diamonds. KQxxx of diamonds is enough to double 1♦. Bidding 1♥ is a takeout double of hearts. All other bids are as if the auction went 1♣ - 1♥ (natural). 1♠ is a 1♠-overcall. 1NT is a Sandwich strong notrump by an unpassed hand. By a passed hand it shows five-five or better in diamonds and spades. I play that 2♣ is Michaels showing at least 5-5 in diamonds and spades. 2♦ is natural and shows a better hand than doubling an artificial 1♦ response that shows hearts. A jump to 2♥, is natural and is what I would have bid had the auction gone 1♣ - 1♥ (natural). After 1♣ - 1♥ which shows four or more spades, double of an artificial 1♥ bid shows hearts. 1♠ is a takeout double, and 1NT is a Sandwich strong notrump by an unpassed

hand. By a passed hand it shows five-five or better in diamonds and hearts. 2♣ is Michaels showing at least 5-5 in diamonds and hearts. 2♥ is natural and shows a better hand than doubling 1♥. A jump to 2♠ is natural, and is what I would have bid had the auction gone 1♣ - 1♠ (natural).

The following experts play that double of 1♦ shows diamonds. This allows you to double 1♦ holding KQJxx of diamonds and nothing else. This is the disadvantage of playing Transfer Responses.

**Adam Wildavsky**—What everyone seems to play nowadays – Double of 1♦ shows diamonds and 1♥ is for takeout.

**Allan Siebert**—Double=diamonds. 2♦=weak or intermediate. 1♥=takeout. 1NT=natural.

**Mel Colchamiro**—After they bid 1♣ - 1♦, I play 1♥ = takeout of hearts, double = diamonds, 2♦ = stronger diamonds 1♠ = spades, 1NT = 15-18.

**Daniel Korbel**—It's normal to play double shows the artificial suit, and a one-level cue-bid is a takeout double.

**Richard Schwartz**—After 1♣ - 1♦, double = diamonds and 1♥ is a takeout double of 1♥. 2♥ is natural. 1NT is a natural 16-bad 19 HCP.

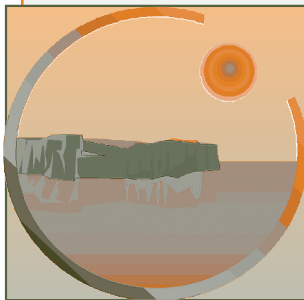
**Danny Gerstman**—For years I've been playing double of 1♦ to show diamonds and bidding 1♥ for takeout and 2♥ as natural with my hearts better than his, or at least I hope they are. But I realize that may not be best. It puts me into the auction whereas doubling 1♦ for takeout of hearts may be a lot safer: they surely can't leave that in.

**Sue Picus**—I like double of 1♦ is diamonds, and a bid of 1♥ is takeout of hearts.

**John Onstott**—We play simply: After 1♣ - 1♦, double = diamonds and 1♥ = takeout of hearts.

**Bobby Wolff**—I would prefer something simple wherein the double of the artificial bid was equivalent to an overcall in that suit, but if in turn I would bid that suit, it would be a takeout double of whatever suit was bid. If however I would bid two-of-that-suit, it would

hand. By a passed hand it shows five-five or better in diamonds and hearts. 2♣ is Michaels showing at least 5-5 in diamonds and hearts. 2♥ is natural and shows a better hand than doubling 1♥. A jump to 2♠ is natural, and is what I would have bid had the auction gone 1♣ - 1♠ (natural).



♠ Norfolk/Va. Beach, VA ♣ JANUARY 6-8, 2017 ♦

# Norfolk/ Virginia Beach Winter Sectional

**Unit 146 Bridge Center**

4966 Euclid Road, Virginia Beach, VA 23462

—Stratification based on partnership/team average—

**Directions:** Take North Witchduck exit off I-264. After 4/10 mile, turn right onto Cleveland Street. After 3/10 mile, turn diagonally right on Euclid Road. The Bridge Center is at 4966 Euclid Road, 3/10 mile on the left, in the U-shaped Pocahontas Office Park.

**Nearby Hotels:** **Hampton Inn**, 5793 Greenwich Road, Virginia Beach, 757-490-9800  
**Motel 6**, 4760 Euclid Road, Virginia Beach, 757-499-1935

*Fri & Sat PM games regionally rated—extra points, no extra money.*

## **Friday, January 6**

*(Light lunch served between sessions)*

Stratified Pairs (single sessions) . . . . .10:30 AM & 2:30 PM  
(0-750, 750-1500, 1500+ MPs)

Novice Pairs (single sessions) . . .10:30 AM & 2:30 PM  
(0-100, 100-200, 200-NLM up to 500)

## **Saturday, January 7**

*(Light lunch served between sessions)*

Stratified Pairs (0-750, 750-1500, 1500+ MPs) 10:30 AM

Novice Pairs . . . . .10:30 AM  
(0-100, 100-200, 200-NLM up to 500)

Bracketed Pairs/Board-A-Match Teams . . . . .2:30 PM

(Play in a stratified pairs game. At the same time, each pair is teamed according to MP (highest to lowest). *Two chances to win!*)

## **Sunday, January 8**

Stratified Swiss Teams (0-750, 750-1500, 1500+ MPs) . . . . .10:30 AM & TBA

Novice Stratified Swiss Teams (0-100, 100-200, 200-NLM up to 500) . .10:30 AM & TBA

**Entries:** \$10 per person per pairs session; \$84 per team (includes meal between sessions for 4 team members). Additional \$3 for unpaid or non-ACBL members.

**Great Hospitality:** Includes free snacks, sodas and coffee for all events.

— Strata may be adjusted at director's discretion based on attendance—

**Tournament  
Co-Chairs**  
**Susan Chambers**  
chamberssa@yahoo.com  
702-683-2463

**Iris Siqueira**  
joesiqueira@hotmail.com  
757-467-7459

**Partnership Chair**  
**Joe Siqueira**  
joesiqueira@hotmail.com  
757-467-7459



**SPACIOUS PLAYING AREA – AMPLE PARKING – FAMOUS HOSPITALITY**

*Separate Friendly Bridge 0-300 games on both  
Friday and Saturday*

**Clarion Hotel Central**

3207 North Boulevard, Richmond, VA 23230

Special Bridge Rate: \$59.00

Call 804-359-9441 for reservations

**FRIDAY, JANUARY 20**

*Newcomer Lecture* . . . . . 9:30 AM  
RBA Friendly Bridge 0-300 game . . . 10:30 AM / 3:00 PM  
 Stratified Open Pairs (750/2000/2000+) . . . . . 10:30 AM  
 Stratified Open Pairs (750/2000/2000+) . . . . . 3:00 PM

**SATURDAY, JANUARY 21**

*Newcomer Lecture* . . . . . 9:30 AM  
RBA Friendly Bridge 0-300 game . . . . . 10:30 AM  
 Stratified Open Pairs (750/2000/2000+) . . . . . 10:30 AM  
 Bracketed Pairs/Board-a-Match Teams . . . . . 3:00 PM  
*A, B, and C play in sectional pairs game. At the same time, each pair is teamed according to MP (highest to lowest). Two chances to win!!*

**SUNDAY, JANUARY 22**

*Free coffee, bagels and donuts at 9:30 AM*  
 Bracketed Swiss Teams . . . . . 10:30 AM  
 8 teams in each bracket, seven rounds, play through, lunch provided

**DIRECTIONS:** From North and West of Richmond: Take I-95-South to Exit 78/Boulevard, get in left side lane at bottom of exit ramp, turn Left onto N. Boulevard, Hotel is immediately on the right. From South and East of Richmond: Take I-95-North to Exit 78/Boulevard, get in right side lane at bottom of exit ramp, turn Right onto Hermitage Road, Hotel's rear entrance is immediately on the left.



**FAMOUS RICHMOND  
HOSPITALITY**

Free coffee, snacks  
and soda available  
each session

**TOURNAMENT  
CHAIRS**

Barry & Winnie Fratkin  
 fratco@mac.com  
 804-741-6782 (H)  
 804-837-6782 (C)

**PARTNERSHIP  
CHAIR**

Anne Atwood  
 bsaintsd@aol.com,  
 804-784-2654

be natural and, of course showing length at least five and usually more. 1NT against possible minimum strength would be strong and natural with a jump to show the two lowest suits and, of course, distributional. I have always been in favor of simplicity on defending opponents since in the heat of battle one "forget" (of an agreed upon bid) is likely to overcome any advantage a superior more intricate system might bring.

**John Mohan**—After 1♣ - 1♦, 1♥ is take-out. Double = good diamonds, but not good enough to overcall 2♦.

**Mark Lair**—Double = diamonds, 1♥ = take-out double of 1♥. 2♦ = more diamonds.

**Steve Bloom**—Cue bid = takeout, double shows that suit.

**Jeff Rubens**—Double = diamonds; 1♥ = spades and diamonds; 2♣ = natural.

**Jon Wittes**—I'm pretty sure we play double of 1♦ as showing diamonds, 2♦ as showing more diamonds, and 1♥ a takeout of 1♣ - 1♥.

*The following experts play the double of 1♦ to show diamonds. However, they have a different meaning for the 1♥-bid. Michaels showing 5-5 or better in spades and diamonds. I wonder what they would do if they held ♠Axxx♥x♦AKxx♣Kxxx after 1♣ - 1♦.*

**DISTRICT 6 STAC**

(Sectional Tournament at Clubs)

**Nov 7-13 & Dec 12-18,  
2016 & Jan 10-16, 2017**

- ♣ Win sectionally rated silver points at your favorite local clubs.
- ♣ Huge overall masterpoint awards ; the more tables in play during any one session, the greater the awards.
- ♣ Clubs in MD, VA, and DE participate. Call any club for details, including entry fees and partnership arrangements.

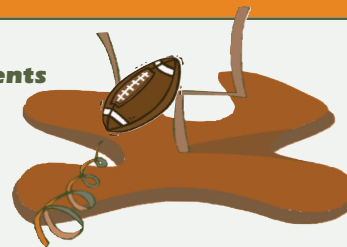
♣ District 6 STaC Coordinator:

**Don Berman**  
 don.berman@verizon.net

The **MARYLAND BRIDGE ASSOCIATION** presents

# BALTIMORE'S SUPERBOWL WEEKEND

at a **New Location:**



## AMERICAN LEGION POST 109

♣ 1610 Sulphur Spring Rd., Halethorpe, MD 21227 ♣

**Directions:** See [www.americanlegionpost109.org](http://www.americanlegionpost109.org) for detailed directions and map. Please note that there are two Sulphur Spring Roads here and do NOT turn onto Dewitt. If you're lost, call 410-242-5781.

**Our Schedule** .....Including free coffee, soft drinks and refreshments and a Lecture with Game Analysis after the Saturday Morning Game! For the Sunday Swiss, sandwiches are available for purchase (partially subsidized by Maryland Bridge Association)

Catch the Silver!



### FRIDAY, February 3

**Stratified Grass Roots Pairs:** 0-1500/3000/3000+ MPs .....1 pm  
(The entry for this game is \$1 additional, 40% more masterpoints awarded! Helps fund the GNTs and NAPs)

**I/N Stratified Pairs:** 0-200/500/1000 MPs .....1 pm  
**Triple Nickel Swiss:** (5 rounds, 5 boards, 5 minutes a board) .....7 pm

### SATURDAY, February 4

**Stratified Pairs:** 0-1500/3000/3000+ MPs (single sessions) ..10 am & 3 pm  
**I/N Stratified Pairs:** 0-200/500/1000 MPs (single sessions) ...10 am & 3 pm

Surprise!

### TOURNAMENT CHAIR

**Renate Conlon**  
443-527-4744  
[rjconlon@hotmail.com](mailto:rjconlon@hotmail.com)

### PARTNERSHIPS

**Pat Murty**  
410-323-6206  
[129firef@comcast.net](mailto:129firef@comcast.net)

### SUNDAY, February 5

**Stratified Swiss Teams** ...10:00 am - Playthru  
Stratified by average of total MPs  
**I/N Swiss Teams** .....10:00 am & 2:00 pm  
0-5/20/50 MPs & 100/200/500 MPs  
2 single session events

**All Pair Events  
are Single Sessions**



**David Berkowitz**—Double of 1♦ shows diamonds. 1♥ is Michaels. 1NT, 2♣ and 2♥ are natural.

**Alan Sontag**—Double of an artificial response shows that suit, cue bid at one-level = Michaels with unknown minor, two of promised suit = natural, 2♣ natural and all other bids as they sound.

*The following experts play double of 1♦ is takeout. They can't double 1♦ holding KQJxx of diamonds.*

**Marty Bergen**—Double = takeout, bidding the suit is natural.

**Kit Woolsey**—When the transfer bid is 1♦ or 1♥, double is takeout of the suit shown. A bid of the suit shown is natural. Otherwise, everything is natural.

**Mark Feldman**—After 1♣ - 1♦: Double = takeout of hearts, and 1♥ = four spades and a minor suit. After 1♣ - 1♥: double = hearts and 1♠ = takeout of spades. 2♥ shows six hearts and sound values.

**Allen Graves**—Double of 1♦ is takeout showing diamonds and spades. 1♥ is takeout showing clubs and spades. 1NT is strong.

*You can get more complicated where you can show spades and a specific minor, especially since most, who play Transfer Responses, play a short club. They open 1♣ on all balanced hand which means that their 1♦ opener is natural and unbalanced. They actually open 1♣ holding ♠Axxx♥xxx♦AKQx♣xx or even ♠Axx♥Kxx♦KQxxx♣xx. This makes it difficult to compete in the minors.*

**Gary Cohler**—Over 1♣ - 1♦, I like double is a takeout of clubs. 1♥ is takeout of hearts. Two-level bids are natural.

**Nick Nickell**—Double of 1♦ is takeout for spades and diamonds. 1♥ is takeout for spades, diamonds and clubs.

**Ralph Katz**—Double is takeout, and 1♥ is also takeout with four clubs

**Brian Platnick**—Over a major transfer, I play cue bid = takeout showing other major and clubs.

Double = other major and diamonds (but could just be decent hand).

## NVBA WINTER SECTIONAL

The Arlington/Fairfax Elks Lodge #2188  
8421 Arlington Boulevard, Fairfax, VA ♦ 703-560-2213

### THURSDAY, FEBRUARY 16

STRATIFIED OPEN PAIRS (2000+/2000/750) or 500/300/100 PAIRS .....10:30 a.m.

*Norma's Game: K of C Hall, 5115 Little Falls Rd., Arlington, VA, 703-892-1292*

*Evening games at: NVBA: Beth El Hebrew Congregation, 3830 Seminary Road, Alexandria, VA and  
WBL: Ohr Kodesh Congregation, 8300 Meadowbrook Ln, Chevy Chase, MD NVBA (Beth El) WBL*

*Intermediate/Newcomer Lecture .....6:30 p.m. 7:00 p.m.*

STRATAFLIGHTED OPEN PAIRS (A/X=3000+/3000; B/C=2000/750) .....7:00 p.m. 7:30 p.m.

NVBA 199ER SWISS TEAMS (200/100/50); WBL 499ER PAIRS (500/300/100) ..7:00 p.m. 7:30 p.m.

NEWCOMER PAIRS (0-20) .....7:00 p.m. 7:30 p.m.

### FRIDAY, FEBRUARY 17

*Gene's Friday Morning Game at KOCH: .....9:30 a.m.*

STRATIFIED OPEN (2000+/2000/750) or 500/300/100 PAIRS (NLMs only)

**...REST OF TOURNAMENT AT ELKS LODGE...**

*Intermediate/Newcomer Lecture .....1:15 p.m.*

STRATAFLIGHTED A/X (3000+/3000) or B/C (2000/750) PAIRS 2 p.m.

I/N (500/300/100) or 99ER (100/50) or 0-20 PAIRS .....2 p.m.

TRIPLE NICKEL SWISS—5 rounds, 5 boards, 5 minutes a board ..7:30 p.m.

I/N (500/300/100) PAIRS .....7:30 p.m.

### SATURDAY, FEBRUARY 18

STRATAFLIGHTED A/X (3000+/3000) or B/C (2000/750) PAIRS 9:30 a.m.

I/N (500/300/100), 49ER (50/20) or NEWCOMER (0-5) PAIRS ..9:30 a.m.

*Intermediate/Newcomer Lecture .....1:15 p.m.*

**\*\*ALL events on Sat. afternoon & evening award REGIONALLY RATED**

**SILVER POINTS** —an additional \$1 will be added to your entry fee to support Grass Roots events in our local area!\*\*

**TROPHY EVENT: WILLIAM POISSANT MEMORIAL PAIRS**

(2 SESSIONS – Qualifying and Barometer Final) .....2 & 7:30 p.m.

STRATIFIED OPEN PAIRS (2000+/2000/750; Single session) ...2 p.m.

I/N (500/300/100) or 49ER (50/20/5) PAIRS .....2 p.m.

STRATIFIED OPEN CONSOLATION (2000+/2000/750) ...7:30 p.m.

—Open to Non-Qualifiers and New Entrants.

I/N (500/300/100) PAIRS .....7:30 p.m.

### SUNDAY, FEBRUARY 19

FLIGHTS A/X (5000+/5000) BOARD-A-MATCH TEAMS 11 a.m. & TBA

BRACKETED FLIGHT B TEAMS (no single player >2500) ...11 a.m. & TBA

*B Teams Bracketed by Total Team Masterpoints: three overall places in each.*

*A/X Swiss & B Teams: 2-session events, a brief break & food available on-site.*

I/N (500/300/100) SWISS TEAMS (Single sessions) ..11 a.m. / 3:15 p.m.

49ER (50/20/5) SWISS TEAMS (Single session) .....11 a.m.

**STRATIFICATION** of events is based on average masterpoints of the team or pair. In any event or flight with an upper limit, no individual's total Masterpoint holding may exceed that upper limit.

**DIRECTIONS:** From Route 50/Arlington Boulevard heading west from DC and Arlington AND from Route 495/Beltway: Continue on/Take Route 50 West about one mile outside the Beltway, and turn left at Javier Road (the second stoplight after the intersection of 50 and 495). Take an immediate right onto the access road that runs parallel to Route 50. The Elks Lodge will be two buildings down on your left—parking on the side and in the rear. From Fairfax, heading East on Route 50: Pass the intersection of Route 50 and Prosperity Avenue—the Prosperity Medical Center will be on your right. Between the first and second lights after Prosperity, turn right into the access road that runs parallel to Route 50 and look for the Elks Lodge immediately to your right—parking on the far side of the building and in the rear.

*Plenty of free parking! On-site snack bar plus lots of free treats! Many great restaurants nearby!*

*Championship Events and a Full Schedule of 299er Events for Novice and Intermediate Players!*  
**Players with 0-5 Masterpoints play FREE in ALL games!**

#### Tournament Chair

Margot Hennings,  
703-560-0245

#### Partnership Chair

Marty Bley  
nvbapartnerships@gmail.com  
571.789.8338 (C)

*Mid-Chart Conventions permitted in all A/X Events*

**Next NVBA Sectional  
Apr 27-30 2017 at Arlington/  
Fairfax Elks Lodge  
(Thurs at Beth El)**

[www.nvba.org](http://www.nvba.org)

**Chip Martel**—After 1♣ - 1♦, several reasonable things to play. I choose double is takeout of hearts and 1♥ = four spades and a long minor.

**Barry Rigal**—Double of 1♦ is spades and better diamonds than clubs, and cuebid is spades with better clubs than diamonds. Parallel for 1♥ showing spades. Every call other than those in both sequences is natural including jump in hearts or spades.

**Drew Casen**—After 1♣ - 1♦ double = takeout double for spades and clubs. 1♥ = takeout for spades and diamonds. 2NT = 5-5 or better spades and diamonds (but a good hand). All other bids are natural. The same principles apply after 1♣ - pass - 1♥ (showing spades): double = takeout of hearts and clubs. 1♠ = takeout for hearts and diamonds. 2NT = 5-5 hearts and diamonds. If we overcall 1NT in fourth chair, we play full system on, ignoring ANY previous bids made by them.

*If it goes 1♣ - 1♥, no matter what the 1♥-bid shows, you should play that 1NT is natural and shows 15-18 HCP. I'll call it a Sandwich strong notrump. Too many pairs are opening and responding on garbage, and you could easily have enough points for game. If your partner overcalls a Sandwich strong notrump, where are you most likely to want to play with a weak hand? I'd say two-of-a-minor. However, if 2♣ is Stayman and 2♦ is a transfer to hearts, you can't play in two-of-a-minor. Therefore, after partner's Sandwich strong notrump, you should play two-of-any-suit as natural and non-forcing. Even two-of-either-major. If you have enough for game, you can use the three-level to transfer or bid Stayman.*

**Bart Bramley**—Over 1♣ - 1♦, I play double is a takeout of hearts (possibly including clubs, especially when 1♣ could be short), and 1♥ is Michaels showing five spades and a five-card minor. I don't feel strongly about these methods, except that I want to play similarly over 1♣ - 1♦ and 1♣ - 1♥, whatever methods I choose.

**John Carruthers**—Since we play Anti-Cue Bids against a natural one-of-a-minor – one-of-a-major, we also play one-of-a-major natu-



ral after 1♣-1red. Double is a takeout of the intended major. Simple.

The following expert plays double of the transfer bid is a strong notrump and 1NT is 5-5 in the two unbid suits.

**Joe Kivel**—I would treat the following bids as if the auction had gone 1♣-1♥. The following are natural bids after 1♣ - 1♦ —1♠, 2♣, 2♦, 2♥, and any higher bid are natural. Note that 2♥ is natural. A 1♥-bid is a takeout double of hearts. A double is a balanced takeout - i.e., equivalent to a strong no trump, and 1NT is a sandwich notrump - showing five spades and five or more diamonds.

What do you do after 1♣ - 1♠, which does not show four spades? Usually 1♠ shows either diamonds or a 1NT-response. In either case it denies a four-card major unless they have a game force. Experts are split as to whether double shows spades or is a takeout double of 1♣ - 1♦. I play that double of 1♠ is a takeout double, the same bid that I would have made over a natural 1♣ - 1♦. 1NT is a Sandwich strong notrump. 2♣ is Michaels and 2♦ is natural. If I have spades, I could bid 2♣.

Agreeing with me. How else do you bid ♠Axxx♥AQxx♦Kx♣xxx after 1♣ - 1♠?

**Adam Wildavsky**—Double is takeout for the majors, 1NT is strong and natural as usual. Two-of-a-minor means whatever it would have after 1♣ - 1♦.

**Allen Graves**—Over 1♠, double is takeout with majors. 1NT is strong.

**Kit Woolsey**—When the “transfer” bid is 1♠, we play double is takeout for the majors.

Otherwise, everything is natural.

**John Mohan**—After 1♣ - 1♠ it's more difficult. I think we need double as takeout and 1NT natural. If 1♣ is 2+ then 2♣ natural, otherwise Michaels (in former case, maybe 2♦ Michaels).

**Steve Bloom**—After the 1♠ response, double = takeout of clubs (or, if clubs is artificial, double = majors).

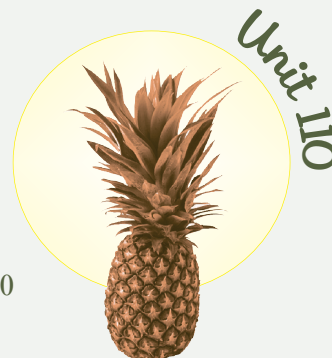
**Gary Cohler**—Over 1♠, double is major oriented, two-level bids are natural.

**Ralph Katz**—Double of 1♠ is major suit

## Williamsburg Winter Sectional

**DOUBLETREE BY HILTON**

50 Kingsmill Road • 757-220-2500



### Friday, February 24

Stratified Pairs .....10:30 am & 3:00 pm  
(0-300, 300-1250, 1250+ MPs—Average points) (*single sessions*)  
Newcomer/99er Pairs (*single sessions*) (*if attendance warrants*) 10:30 am & 3:00 pm

### Saturday, February 25

Stratified Pairs (0-300, 300-1250, 1250+ MPs —Average points) .....10:30 am  
Newcomer/99er Pairs (*if attendance warrants*) .....10:30 am  
Bracketed Pairs/Board-A-Match Teams—*Two chances to win!* .....3:00 pm  
(0-300, 300-1250, 1250+ MPs—Average points) A, B, C played in stratified pairs game. At the same time, each pair is teamed according to masterpoints for a BAM.

### Sunday, February 26—Including lunch!

Swiss Teams .....10:00 am

**Entry Fees:** \$10 per person per session; \$88 (*includes lunch*) per Swiss Team  
\$3 additional/person/session for non or unpaid ACBL members

#### Tournament Chair

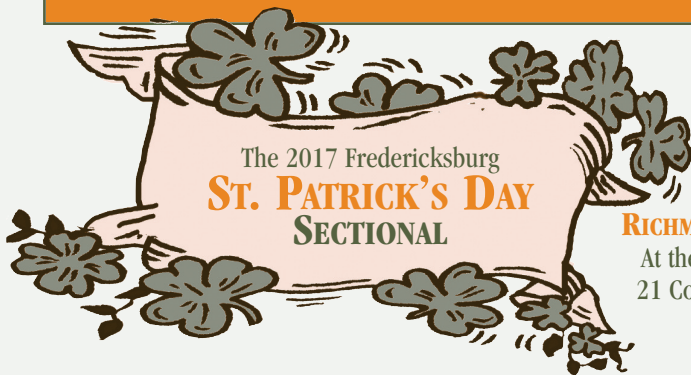
**Jane Farthing:** jane.farthing@gmail.com, 703-850-9635

#### Partnership Chair

**Ron Alldaffer:** ralldaffer@charter.net, 757-279-0230

**Williamsburg Hospitality!**

**Directions:** I-64 to Rte. 199, exit 242A (Busch Gardens). Turn right onto Rt. 60 East, turn right into Kingsmill on the James, the DoubleTree is on the right.



Sponsored by the  
**RICHMOND BRIDGE ASSOCIATION**  
At the Fraternal Order of Eagles,  
21 Cool Springs Rd. (Route 607)  
Fredericksburg, VA



**FRIDAY, MARCH 17**

Stratified Open Pairs (0-300, 300-1500, 1500+)\* . . . 10:00 am  
Stratified Open Pairs (0-300, 300-1500, 1500+)\* . . . 3:00 pm  
99er Pairs (*pending sufficient entries*) . . . . . 3:00 pm

**SATURDAY, MARCH 18**

Newcomer Pairs 0-300 . . . . . 10:00 am  
Stratified Open Pairs (0-300, 300-1500, 1500+)\* . . . 10:00 am  
Bracketed Pairs/BAM Teams . . . . . 3:00 pm  
*A, B, and C play Sectional Pairs game. Simultaneously, Director pairs teams according to masterpoints (highest to lowest) giving all TWO chances to win!*

**SUNDAY, MARCH 19**

Bracketed Swiss Teams . . . . . 10:00 am & TBA  
*8 teams in each bracket, 7 rounds, playthrough, lunch available*

*\*Strata may be modified based on attendance*

**LOCATION**

Fraternal Order of Eagles

21 Cool Springs Rd., Fredericksburg, VA (Route 607)

**DIRECTIONS:** Coming from the North: Take I95 South to Exit 133-A (Rt 17 Business/Falmouth). Coming from the South: Take I95 North to Exit 133, take turnoff to Falmouth. From the exit, continue to the 3rd light, at Rt 1 (approx. 2 miles). Be sure to be in the left lane and cross Rt 1 and continue approx 3 miles to 3rd light at Rt 607 (Cool Springs Rd). Turn right and Eagles is 1 block on left.

**REFRESHMENTS**  
(every session)  
*Homemade Cookies*  
*Coffee, Tea, Soft Drinks*  
*Sunday: Doughnuts & Bagels and Box Lunch available between sessions*

**TOURNAMENT CHAIR**  
**Deborah Hage**  
(540) 498-1206  
debhage@hotmail.com

**PARTNERSHIPS**  
**Sheila Young**  
(540) 220-0868  
**Paul McGowan**  
(540) 785-3277

**PAIR GAME STRATA**  
0-300, 300-1500, 1500+

**ENTRY FEES**  
\$10 per player/session;  
\$88 per team on Sunday;  
*\$3 additional per player/session for non or unpaid ACBL members*

takeout, could have either minor.

**Brian Platnick**—After 1♣ - 1♠. If it is game-forcing, Double = Michaels. If less than game-forcing, takeout with emphasis on Majors.

**Chip Martel**—After 1♣ - 1♠ which is artificial, usually no major regardless of whether tends to be diamonds, or wider range of, double = major suit oriented takeout, 2♣ = 5/4 majors and 2♦ = 5-5 majors. As a passed hand might be better to play double = overcall in suit bid.

**Mel Colchamiro**—After 1♣ -1♠, I play double = takeout oriented towards majors, 2♠ = spades, and 1NT = 15-18 HCP.

**Drew Casen**—After 1♣ - 1♠, double is takeout for majors. 1NT = Michaels both majors 5-5. All other bids are natural. If we overcall 1NT in fourth chair, we play full systems on, ignoring ANY previous bids made by them.

**Bart Bramley**—Over 1♣ - 1♠, I play double shows BOTH majors, since responder has denied a major. Here I feel more strongly that showing both majors is better than showing just spades.

*The following experts play that a double shows spades. This means that you have to wait holding a normal takeout double.*

**Daniel Korbel**— I would assume without discussion that double of 1♠ = spades but probably double should be takeout.

**Richard Schwartz**—After 1♣ - 1♠, double = spades. 1NT is natural: 16-bad 19 HCP.

**Danny Gerstman**—After a 1♠ response, my default decision there is that double should show spades and 2♠ should show more/better spades. If 1♠ showed some positive hand wherein it would be impossible for me to be bidding with strong notrump values, then 1NT by me should be a take-out bid.

**Marty Bergen**—After 1♣ -1♠, double = spades.

**Allan Siebert**—Double = spades, 2♠ = weak or intermediate hand. Double later = takeout. Any notrump = natural.

**David Berkowitz**—After 1♣ - 1♠, double

is a spade overcall. 1NT and 2♣ are natural. 2♦ = majors.

**Alan Sontag**—Over 1♣ - 1♠, we play double = 1♠ overcall, 2♣ natural and 2♦ = 5-4 or 5-5 in majors.

**Sue Picus**—Over 1♠, I play double shows an overcall in spades.

**John Onstott**—After 1♣ - 1♠, double = Spades

**Bobby Wolff**—When the opponents have denied four spades by a 1♠-bid, my double would show spades, with 2♠ or more natural. 1NT against possible minimum strength would be strong and natural with a jump to show the two lowest suits and, of course distributional.

**Mark Lair**—Over 1♠, Double = spades, 2♠ = natural.

**Mark Feldman**—After 1♣ - 1♠: Double = spades and 2♣ or 2♦ = majors depending upon the exact meaning of 1♠.

**Barry Rigal**—For 1♠, much depends on which weak hands they can hold. If it is diamond-centered, double = spades and 2♦ = Michaels. Every call other than those in both sequences is natural including jump in hearts or spades.

**Jeff Rubens**—Over 1♠, assuming 1♠ shows no major-suit length, double = spades; 1NT = majors; 2♣ = natural.

**Jon Wittes**—I don't recall ever coming across 1♣ - 1♠ showing something other than spades, but would play double as showing spades, 2♠ showing more spades. Not sure what a takeout bid would be, since we don't know what other than spades 1♠ shows.

*When the opponents come to your table and pre-alert you that they are playing Transfer Responses and you haven't discussed your defenses, play the simple defense. If they bid 1♣ - 1♦ or 1♣ - 1♥, play that double shows that suit and bidding the transfer suit is takeout. After 1♣ - 1♠ play double is takeout of 1♣ - 1♦. All higher bids are as if the auction went 1♣ - 1♥ (natural), 1♣ - 1♠ (natural) or 1♣ - 1♦ (natural). It's more important to know what you're playing than playing perfect methods and maybe simple is best.*



## 39th Annual LYNCHBURG SPRING SECTIONAL

~Great Location!~

at the **FOREST RECREATION CENTER**  
1088 RUSTIC VILLAGE RD, FOREST, VA 24551

~Great Snacks and Hospitality!~

### FRIDAY, MARCH 24 (single session events)

Stratified Pairs (0-500, 500-2000, 2000+)\* . . . . .10:00 A.M. / 2:00 P.M.

### SATURDAY, MARCH 25 (single session events)

**Unit 139 Board Meeting . . . 1:00 P.M.**

Stratified Pairs (0-500, 500-2000, 2000+)\* . . . . .10:00 A.M. / 2:00 P.M.

### SUNDAY, MARCH 26

Stratified Swiss Teams (0-500, 500-2000, 2000+)\* . . . . .10:00 A.M. & TBA

*\*Strata may be modified based on attendance*

**Entry Fees** – \$10/person/session, Sunday Team Game \$96/team  
**Plenty of homemade food and catered lunch on Sunday!!!**  
\$3 additional/person for non/unpaid ACBL members

**Tournament Chair** – **Sally Gilkey** (434) 384-8970, salgilkey@aol.com

**Partnership Chair** – **Jo Ann Stover** (434) 616-6966, joann24501@aol.com

### Tournament Hotel

**La Quinta Inn & Suites**  
3320 Candler's Mtn Road  
Lynchburg, VA 24502  
434-847-8655

**Bridge Rate:** \$89 plus tax  
incl. full breakfast buffet

**Directions to Rec Center:** From US-29B South or North merge onto or take Rt. 501 North (Lynchburg Expressway). Follow 3.1 miles, turn left on Forest Rd. US-221. Go 4.6 miles. Turn left at light onto Thomas Jefferson Rd. (Rt. 811). Take 1st left onto Rustic Village Rd. From Roanoke take US-460 East toward Lynchburg. Turn left on Thomas Jefferson Rd. Go 5 miles, turn right on Rustic Village Rd.





# Non Life Master Sectional

Saturday & Sunday: NEWPORT MILL MIDDLE SCHOOL  
11311 Newport Mill Road, Kensington, MD 20895

### Maryland Hospitality

Lunch & refreshments included Sat. & Sun.!

### Play for Silver!

NLMs with fewer than 500 MPs

**Thursday, March 23: OHR KODESH:** 8300 Meadowbrook Ln., Silver Spring, MD

NLM StrataFlighted Pairs (NLM<500/200/100 and separate 20/10/5) 7:30 pm

**Friday, March 24: ROCKVILLE DBC:** 11815 Seven Locks Rd., Potomac, MD

NLM Stratified Pairs (500/100/20) .....11:15 am

**Saturday, March 25: Rest of tournament at: NEWPORT MILL MIDDLE SCHOOL**

**Free ½ hour lesson before afternoon game, by Leslie Shafer, ACBL Teacher of the Year!**

NLM StrataFlighted Pairs (500/200/100 and separate 50/20/10) . . .10:30 am

NLM StrataFlighted Pairs (500/200/100 and separate 50/20/10) . . .3:00 pm

**Sunday, March 26** (All day playthrough with lunch break)

Stratified Swiss Teams (500/200/100) .....10:30 am

—All events are stratified by average masterpoints, but no individual's masterpoint total may exceed the event's upper limit. Strata may be adjusted according to attendance.—

### TOURNAMENT CHAIRS:

**Julie Marquette**, 301-642-9197, jmarq3428@yahoo.com & **Yaeko Perera**

**PARTNERSHIPS: Andrea Weiswasser**, andweis@aol.com

**DIRECTIONS to Newport Mill Middle School:** Take the Beltway (I-495) to the Georgia Ave exit (Exit 31A, MD 97) North (towards Wheaton). Go 1.6 miles then bear left onto Viers Mill Rd. Go 1.0 miles then turn left onto Newport Mill Rd. Go 1/4 mile to school on left.

## 2016-17 GRAND NATIONAL TEAMS FAQ

### 1. What is the Grand National Teams (GNT)?

The GNT is a grass roots event in which you start by qualifying at a club, a Unit game, or at a Non-Life Master tournament. Then you compete at the District level. If you win your flight, you will represent our District at the 2017 Summer Nationals in Toronto, Canada.

### 2. How many flights are in the GNT's?

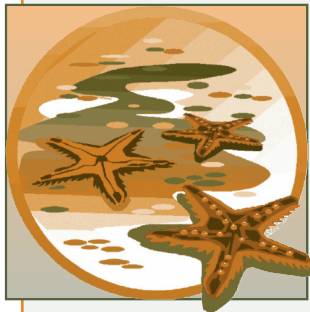
There are four separate flights. The Open flight is for all players. "A" flight is for players with 0-6000 masterpoints. "B" flight is for players with 0-2500 masterpoints. "C" flight is for non-life masters with fewer than 500 masterpoints. Each flight is set up as a championship event against your peers. Your masterpoint card as of September 1, 2016 will determine your flight eligibility.

### 3. How do I enter the District competition?

Find teammates. Teams with 4, 5 or 6 players are allowed. You do not have to play with the team you qualify with at the local club game. However, everyone on your team must be club qualified. For help in finding local club or Unit qualifying GNT games, see the District 6 website [www.districtsix.org](http://www.districtsix.org). Then play at the location most convenient for you. The District competition begins for Flight A in January 2017 and for the other three Flights in March 2017, so if you plan to play in the Flight A event, look for qualifying games in September-December 2016. The first weekend of play for Flights B and C is held at two different sites (Silver Spring, Maryland and Charlottesville, Virginia). For the Open and "A" flights, the first weekend of play is held in Silver Spring, Maryland.

### 4. Why do you have more than one site for District level competition?

We are trying to avoid long travel times as much as possible. By having sites in Silver Spring and Charlottesville for "B" and "C" flights, most of the District has less than a two hour drive to reach a site.



# Norfolk/ Virginia Beach Spring Sectional

**Unit 146 Bridge Center**

4966 Euclid Road, Virginia Beach, VA 23462

—Stratification based on partnership/team average—

**Directions:** Take North Witchduck exit off I-264. After 4/10 mile, turn right onto Cleveland Street. After 3/10 mile, turn diagonally right on Euclid Road. The Bridge Center is at 4966 Euclid Road, 3/10 mile on the left, in the U-shaped Pocahontas Office Park.

**Nearby Hotels:** **Hampton Inn**, 5793 Greenwich Road, Virginia Beach, 757-490-9800  
**Motel 6**, 4760 Euclid Road, Virginia Beach, 757-499-1935

*Fri & Sat PM games regionally rated—extra points, no extra money.*

**Friday, March 31**

*(Light lunch served between sessions)*

- Stratified Pairs (single sessions) . . . . .10:30 AM & 2:30 PM  
(0-750, 750-1500, 1500+ MPs)
- Novice Pairs (single sessions) . . .10:30 AM & 2:30 PM  
(0-100, 100-200, 200-NLM up to 500)

**Saturday, April 1**

*(Light lunch served between sessions)*

- Stratified Pairs (0-750, 750-1500, 1500+ MPs) 10:30 AM
- Novice Pairs . . . . .10:30 AM  
(0-100, 100-200, 200-NLM up to 500)
- Bracketed Pairs/Board-A-Match Teams . . . . .2:30 PM  
(Play in a stratified pairs game. At the same time, each pair is teamed according to MP (highest to lowest). *Two chances to win!*)

**Sunday, April 2**

- Stratified Swiss Teams (0-750, 750-1500, 1500+ MPs) . . . . .10:30 AM & TBA
- Novice Stratified Swiss Teams (0-100, 100-200, 200-NLM up to 500) . . .10:30 AM & TBA

**Entries:** \$10 per person per pairs session; \$84 per team (includes meal between sessions for 4 team members). Additional \$3 for unpaid or non-ACBL members.

**Great Hospitality:** Includes free snacks, sodas and coffee for all events.

— Strata may be adjusted at director's discretion based on attendance—

5. What happens after my "B" or "C" team advances at my District site?

The champions of each District site come together for a second weekend in Silver Spring, Maryland. In Flight C they play one day (Sunday) and in other flights-two days (Saturday and Sunday). The winning team in all four flights receives \$1500 and a chance to win a National Championship being held at the Summer NABC in Toronto, Canada.

6. Our team finds it difficult to free up time for four specific weekend days?

Form a five- or six-person team. The rules say each team member must intend to play half the boards or half the total sessions. So if you have a team member who can only play specific days or specific weekends, work your lineups accordingly. Also two session substitutes are possible (see Conditions of Contest on District 6 website).

7. How do I find out more information?

See District 6 website: [www.districtsix.org](http://www.districtsix.org). For answers to specific questions, contact Bill Cole: 301-602-9042 or [colebridge@aol.com](mailto:colebridge@aol.com).

**8. Pre-Registration**

Once you have qualified, formed your team and know which Flight event you are going to play in, you must pre-register your team. Team captains must submit a check or money order for \$100 made out to District Six with the names and ACBL numbers of all players, email address for the Captain, the level of Flight you are playing in, and your choice of the northern or southern site (if you are playing in Flight B or Flight C). This covers 2 sessions (one day) of play. Checks for pre-registration may be submitted to the GNT Coordinator at the Southern site, Nan Massie, or may be sent to Lucy McCoy, 3353 Taleen Ct., Annandale, VA 22003. For Flight A, checks must be postmarked by January 19, 2017. For the Open, Flight B and Flight C, checks must be postmarked by February 23, 2017. Pre-registration payment and team information for Flight A can also be provided to Steve Robinson, if you see him in person.

**Tournament Co-Chairs**  
*Kathy Burch*  
[kathy.m.burch@outlook.com](mailto:kathy.m.burch@outlook.com)

*Stephanie McLeod*  
[mstmcleod@earthlink.co](mailto:mstmcleod@earthlink.co)  
757-351-2508

**Partnership Chair**  
*Stephanie McLeod*  
[mstmcleod@earthlink.co](mailto:mstmcleod@earthlink.co)  
757-351-2508



♣ Silver Spring, MD ♦ APRIL 6-9, 2017 ♥

70<sup>th</sup> Annual

# CITY OF ~ WASHINGTON TOURNAMENT ~

at the **MARGARET SCHWEINHOUT SENIOR CENTER**  
1000 Forest Glen Rd, Silver Spring, MD (Friday-Sunday only)



## THURSDAY, APRIL 6

- ♣ StrataFlighted A/X (unlim/2000) & B/C/D (1000/500/300) Pairs . . .11:15am  
**Rockville Duplicate Bridge Club**, 301-503-3348 (Mark Lavine) **NO ENTRY TILL 11AM**  
*St. James Episcopal Church, 11815 Seven Locks Rd., Rockville*
- ♦ StrataFlighted A/X (unlim/3000) & B/C (2000/750) Pairs (both sites), 0-20 Pairs (both sites), Intermediate/Novice Pairs (500/300/100) (Obr Kodesh only) & Stratified 199er (200/100/50) Swiss Teams (Beth El only)  
**Beth El Congregation**, 3830 Seminary Rd, Alexandria . . . . . 7:00pm  
**Ohr Kodesh Congregation**, 8300 Meadowbrook Ln., Chevy Chase 7:30pm  
I-495 to Connecticut Ave. S. 4<sup>th</sup> light left E-W Hwy 410. Left Meadowbrook Ln. 1<sup>st</sup> left Freyman Dr. Parking lot on left. No outside food allowed.

## FRIDAY, APRIL 7

The Tournament Committee and the WBL Board is re-considering the events normally run on Fridays in order to best serve the membership. The schedule will be updated online at [www.districtsix.org](http://www.districtsix.org) and in the next issue of *TableTALK*. Suggestions and comments are welcome. Contact Tournament Chair, Brad Theurer at 301-527-8819 or [batheurer256@gmail.com](mailto:batheurer256@gmail.com).

## SATURDAY, APRIL 8

**Win upgraded (more) masterpoints today! \$1 additional fee supports Grass Roots events.**

- ♣ \*StrataFlighted A/X (unlim/3000) & B/C Pairs (2000/750) (single sessions) . . . . . 10:00am, 3:00pm
- ♦ Intermediate/Novice Pairs (500/300/100) & 49er Pairs (50/20/5) (single sessions) . . . . . 10:00am, 3:00pm

—Lunch available for purchase—

## SUNDAY, APRIL 9

- ♠ Flights A/X (unlim/5000) Swiss Teams (2 session playthrough w/break) . . . . . 11:00am & TBA
- ♣ Bracketed Flight B Teams (no single player >3000) (2 session playthrough w/break) . . 11:00am & TBA  
B Teams Bracketed by total team masterpoints; three overall places in each.
- ♦ 500/300/100 Swiss Teams, VPs (single sessions) . . . . . 11:00am, 3:00pm

♣ **Lots of Intermediate & Novice Events with Silver Points!** ♥

*Separate I/N events & strata as advertised as attendance allows. (Director's discretion.)*

**Hospitality** includes snacks, drinks, & **Friday lunch**. Sunday lunch available for purchase. **Tournament Chair: Brad Theurer**, 301-527-8819, [batheurer256@gmail.com](mailto:batheurer256@gmail.com); **Hospitality Manager: Mike Zane**; **Volunteer Coordinator: Barbara Summers**, 301-598-5838, [jimbarb1184@aol.com](mailto:jimbarb1184@aol.com); **Partnerships: Barbara Doran**, 301-608-0347, [barb.doran@verizon.net](mailto:barb.doran@verizon.net), **Online Partnership Desk** available.

\*Strataflighted if attendance warrants—otherwise combined into Stratified Pairs (unlim/2000/500) Stratification by avg. masterpoints of the team or pair. No individual may exceed the event's upper limit.

**Directions to the Margaret Schweinhaut Senior Center**, 1000 Forest Glen Rd, Silver Spring, MD: I-495 to Georgia Avenue North (toward Wheaton). 1<sup>st</sup> light right on Forest Glen Rd. The Center is .7 mile on right.

## The Mid-Atlantic...

Home to the ACBL's premier Regionals — hosting 33,000 tables during this past year. It's time to check your 2016-17 calendar and plan to play in the biggest and best tournaments of

### .....November, 2016

Nov 7-13 . . . . .D6 & Unit 190 StAc  
Don Berman, 301-776-3581, [don.berman@verizon.net](mailto:don.berman@verizon.net)

● P 3...Nov 14-20 **Norfolk/Va Beach, VA REGIONAL**  
Brian Boyce, 757-434-0792, [brian@bfbboyce.com](mailto:brian@bfbboyce.com)

Nov 24-Dec 4 . . .ORLANDO, FL **NATIONALS**  
Fall North American Bridge Championships

### .....December, 2016

● P 9...Dec 2-4 . . . . .Charlottesville, VA  
Betsey Ruehl, 540-942-3667, [etruehl@ntelos.net](mailto:etruehl@ntelos.net)

Dec 12-18 . . . . .D6 & Unit 190 StAc  
Don Berman, 301-776-3581, [don.berman@verizon.net](mailto:don.berman@verizon.net)

● P 2...Dec 27-Jan 2 **N Charleston, SC D7 REGIONAL**  
Steven Donaldson, 843-412-8097, [folliboy@aol.com](mailto:folliboy@aol.com)

### .....January, 2017

● P 10...Jan 5-8 . . . . .Silver Spring, MD  
Brad Theurer, 301-527-8819, [batheurer256@gmail.com](mailto:batheurer256@gmail.com)

● P 11...Jan 6-8 . . . . .Norfolk/Va Beach  
Susan Chambers, 702-683-2463,  
[chamberssa@yahoo.com](mailto:chamberssa@yahoo.com)

Jan 10-16 . . . . .D6 & Unit 190 StAc  
Don Berman, 301-776-3581, [don.berman@verizon.net](mailto:don.berman@verizon.net)

● P 12...Jan 20-22 . . . . .Richmond, VA  
Barry and Winnie Fratkin, 804-741-6782 (H) ,  
804-837-6782 (C), [fratco@mac.com](mailto:fratco@mac.com)

● P 4...Jan 23-29 **Wilmington, NC D7 REGIONAL**  
Larry Harding, [Larry.Harding57@gmail.com](mailto:Larry.Harding57@gmail.com)

Jan 28-29 . . . . .Flight A GNT  
1<sup>st</sup> weekend

### .....February, 2017

● P 13...Feb 3-5 . . . . .Baltimore, MD  
Renate Conlon, 443-527-4744, [rjconlon@hotmail.com](mailto:rjconlon@hotmail.com)

the year. Mid-Atlantic regionals offer loads of Bracketed Knockouts, exciting Intermediate/Newcomer schedules and

# 1 Year DISTRICT 6 Calendar OF EVENTS

lectures, and our three favorite words: hospitality, hospitality, hospitality.

.....February, continued...

- **P 14...Feb 16-19** .....Fairfax, VA  
Margot Hennings, 703-560-0245, margot10bridge@cox.net
- **P 15...Feb 24-26** .....Williamsburg, VA  
Jane Farthing, 703-850-9635, jane.farthing@gmail.com
- Feb 20-26** ... Asheville, NC D7 REGIONAL  
Stewart Manning, smanning42@frontier.com

.....March, 2017

- Mar 4-5** .....Flights B, C and Open GNT  
1st weekend
- Mar 9-19** ... KANSAS CITY, MO NATIONALS  
Spring North American Bridge Championships
- **P 16...Mar 17-19** .....Fredericksburg, VA  
Deborah Hage, 540-498-1206, debhage@hotmail.com
- **P 18...Mar 23-26** ....Kensington, MD NLM  
Julie Marquette, 301-642-9197, jmarq3428@yahoo.com

- **P 17...Mar 24-26** .....Lynchburg, VA  
Sally Gilkey, 434-384-8970, salgilkey@aol.com

- **P 19...Mar 31-Apr 2** ... Norfolk/Va Beach, VA  
Kathy Burch, kathy.m.burch@outlook.com

.....April, 2017

- **P 20...Apr 6-9** .....Silver Spring, MD  
Brad Theurer, 301-527-8819, batheurer256@gmail.com
- Apr 8-9** .....Flight A GNT  
2nd weekend
- Apr 17-23** ... Gatlinburg, TN D7 REGIONAL  
Julia Misslin, 423-884-3550, jupe60@tds.net

- Apr 27-30** .....Fairfax, VA  
Margot Hennings, 703-560-0245, margot10bridge@cox.net

.....May, 2017

- May 5-7** .....Williamsburg, VA  
Jane Farthing, 703-850-9635, jane.farthing@gmail.com
- May 8-14** .....D6 & Unit 190 STaC  
Don Berman, 301-776-3581, don.berman@verizon.net
- P 5...May 23-29** ... Richmond, VA REGIONAL  
George Lewis, george.lewis@lewisct.com & Jacki Shuman, 804-307-4304, richmondregional@aol.com

.....June, 2017

- Jun 2-4** .....Blacksburg, VA  
Rich Rio, 540-553-6228, richrio428@yahoo.com
- Jun 2-4** .....Baltimore, MD  
Renate Conlon, 443-527-4744, rjconlon@hotmail.com
- Jun 3-4** .....Flights B, C and Open GNT  
2nd weekend
- Jun 5-11** ....Greenville, SC D7 REGIONAL  
Richard Brown, 864-855-1474, rbrown100@charter.net
- Jun 12-18** .....D6 & Unit 190 STaC  
Don Berman, 301-776-3581, don.berman@verizon.net
- Jun 19-25** .....D4 REGIONAL  
King of Prussia, PA  
Meyer Kotkin, 856-986-5109, guymath@comcast.net

- Jun 23-25** .....Richmond, VA  
Barry and Winnie Fratkin, 804-741-6782 (H) , 804-837-6782 (C), fratco@mac.com

.....July, 2017

- Jul 3-9** .....Bethesda, MD REGIONAL  
Marty Bley, 240-441-9885, District6regionalbethesda@gmail.com
- Jul 14-16** .....Virginia Beach, VA  
Brian Boyce, 757-434-0792, brian@bfboyce.com  
Jack Mallery, jmallery1@verizon.net
- Jul 20-30** .....TORONTO, ON NATIONALS  
Summer North American Bridge Championships

.....July, continued...

- Jul 31-Aug 6** Columbia, SC D7 REGIONAL  
Elizabeth Beckwith, elizbeck2011@gmail.com)

.....August, 2017

- Aug 7-13** .... Hunt Valley, MD REGIONAL  
Diane Jaworivsky, 410-461-2083, DianeJaw@verizon.net
- Aug 24-27** .....Silver Spring, MD  
Brad Theurer, 301-527-8819, batheurer256@gmail.com
- Aug 29-Sep 4** ... Atlanta, GA D7 REGIONAL  
Jack Feagin, 404-252-9246, jfeagin2@bellsouth.net

.....September, 2017

- Sep 8-10** .....Norfolk/Va Beach  
Jennifer Christman, jchristman8@cox.net
- Sep 14-17** .....Fairfax, VA  
Margot Hennings, 703-560-0245, margot10bridge@cox.net
- Sep 23-24** .....D6 NAP Finals  
Sylvia Shi , 289-788-0385, sylviamshi@gmail.com
- Sep 29-Oct 1** .....Williamsburg, VA  
Jane Farthing, 703-850-9635, jane.farthing@gmail.com

.....October, 2017

- Oct 5-8** .....Fairfax, VA  
Margot Hennings, 703-560-0245, margot10bridge@cox.net
- Oct 13-15** .....Richmond, VA  
Barry and Winnie Fratkin, 804-741-6782 (H) , 804-837-6782 (C), fratco@mac.com
- Oct 19-22** .....Silver Spring, MD  
Brad Theurer, 301-527-8819, batheurer256@gmail.com
- Oct 23-29** ... Charlotte, NC D7 REGIONAL  
David Smith, davidbsmith@bellsouth.net
- Oct 30-Nov 5** .....D4 REGIONAL  
Lancaster, PA  
John Klinger, dhklinger@epix.net

## 2016-17 Grand National Teams — Get Your Team Together!

It is time to get to your local club or unit game to qualify to win a partially subsidized trip to the **Summer 2017 NABC** in **Toronto, Ontario**. If you win, you will represent District 6 in the national finals of this grassroots competition.

The club/unit game qualification period began on September 1, 2016 and will end on May 18, 2017. To qualify, you can go out and play as often as you want and with whomever you want. As long as whatever team you play on wins at least 50% of its matches during a qualifying game, then you are eligible. You can form the team you want to play on in the District Finals from among all eligible players in your bracket.

The competition contains four brackets. In the Open bracket all players may enter. Bracket A is limited to players with 0-6000 masterpoints. Bracket B is limited to players with 0-2500 masterpoints. Bracket C is limited to Non-Life Masters with fewer than 500 masterpoints. Masterpoint eligibility is determined by the September 1, 2016 ACBL list of points. In club play, the Open and A brackets will be combined.

Masterpoints awarded at the club or unit level are half-red and half-black. These masterpoints are an easy way to earn colored points without traveling or changing your local partners or playing habits. At the District level competition, the match awards are red and the overall awards are gold. (Bracket C awards 25% gold and 75% red.)

We will be holding the first weekend of the District finals of Brackets B and C at one northern site (White Oak Community Center) and one southern site (Comfort Inn Monticello).

### ***You must pre-register to play. Pre-registration ends Midnight on the Thursday, nine days before the event.***

Team captains must submit a check or money order for \$100 made out to District Six with the names and ACBL numbers of all players, email address for the Captain, the level of Bracket you are playing in, and your choice of the northern or southern site (if you are playing in Bracket B or Bracket C). This covers 2 sessions (one day) of play. Checks for pre-registration may be submitted to the GNT Coordinator at the Southern site, Nan Massie, or may be sent to Lucy McCoy, 3353 Taleen Ct., Annandale, VA 22003. For Bracket A, checks must be postmarked by January 19, 2017. For the Open, Bracket B and Bracket C, checks must be postmarked by February 23, 2017. Pre-registration payment and team information for Bracket A can also be provided to Steve Robinson, if you see him in person.

Any questions, please contact Bill Cole at 301-602-9024 or [colebridge@aol.com](mailto:colebridge@aol.com). You can find Conditions of Contest, directions to sites, & where to qualify at [districtsix.org](http://districtsix.org).

### **Open Bracket**

#### First Weekend:

White Oak Community Center  
Silver Spring, MD  
Saturday, March 4, 12 Noon  
Sunday, March 5, 11 A.M.

#### Second Weekend: For all qualified teams Site TBA

Saturday, June 3, Time TBA  
Sunday, June 4, Time TBA ... Finals

### **Bracket A (0-6000 MP)**

#### First Weekend:

White Oak Community Center  
Silver Spring, MD  
Saturday, January 28, 12 Noon  
Sunday, January 29, 11 A.M.

#### Second Weekend: For all qualified teams

Margaret Schweinhaut Senior Center  
Silver Spring, MD  
Saturday, April 8, Time TBA  
Sunday, April 9, Time TBA ... Finals

### **Bracket B (0-2500 MP) } (-or-) Bracket C (0-500 MP)**

#### First Weekend: Northern Site

White Oak Community Center  
Silver Spring, MD  
Saturday, March 4, 12 Noon  
Sunday, March 5, 11 A.M.

#### First Weekend: Southern Site

Comfort Inn Monticello  
Charlottesville, VA  
Saturday, March 4, Time TBA  
Sunday, March 5, Time TBA

#### Second Weekend: For all qualified teams Site TBA

#### B Bracket: both days; C Bracket: Sunday only unless large turnout

Saturday, June 3, Time TBA  
Sunday, June 4, Time TBA ... Finals