

District

TABLE

Tidbits
Locating Games
Keeping
Winners
Game Analyses

see
Bridge
Courses on
page 7

“Renowned Bridge
Courses Offered at the
Williamsburg Regional,
Sunday, February 28

For new players: Whirlwind Bridge's
Learn Bridge in a Day?® from 1 to 6 pm.

For club directors: Williamsburg Club
Director Update Course — starting at
6 pm after the LBIAD?® course

WWW

District 6 TableTALK

EDITORIAL BOARD

Bill Cole, PUBLISHER
Donna Rogall, CREATIVE DIRECTOR, EDITOR
Lucy McCoy, MANAGING EDITOR
Steve Robinson, CIRCULATION MANAGER
Ellen Cherniavsky, MAILING LIST

CONTRIBUTING EDITORS:
Barbara Doran, Margot Hennings

COLUMNISTS:
Steve Robinson, Shawn Stringer,
Margot Hennings, Lynn Jones

DISTRICT SIX OFFICERS

ACBL District 6 Director:
Margot Hennings

Margot10bridge@cox.net

President: Shawn Stringer
shstringer@aol.com

Vice President: Richard Deyerle
rickdey_49@hotmail.com

Secretary: Susan B. MacLaughlin
sbmak121@comcast.net

Treasurer: Ron Spieker
tip001@verizon.net

Immediate Past President: Don Berman
don.berman@verizon.net

UNIT PRESIDENTS

Unit 109: Richmond: Harry Gellis
hpgellis@yahoo.com

Unit 110: Peninsula: Ron Alldaffer
balldaffer@charter.net

Unit 135: Maryland: Ron Conlon
rjconlon@hotmail.com

Unit 139: Piedmont: David Butler
dbutler934@aol.com

Unit 146: VA State: Brian Boyce
brian@bfboyce.com

Unit 147: Wash. DC: Ellen Cherniavsky
eachernia@yahoo.com

Unit 218: Northern Va: Ron Kral
RonKral@gmail.com

Unit 231: SW Virginia: Rich Rio
richrio428@yahoo.com

*Send comments or inquiries to Lucy McCoy,
Managing Editor at lucymccov@verizon.net*

Any requests for changes to
the mailing list must be sent
directly to the ACBL at:

••• AddressChange@ACBL.org

DISTRICT

6

Table

PRESIDENT'S MESSAGE

On behalf of District 6, I am honored to congratulate Anne Duty, one of our regional and sectional tournament directors, for winning the ACBL's Fred Friendly award for 2015. The award is named for the late Paul Stehly, known to his colleagues as Fred Friendly. Anne was chosen as the recipient of this award for her outstanding work in assuring that players in all of the events that she runs enjoy the bridge experience. In addition to directing, Anne has played for many years and has served as Tournament Co-Chair for the Virginia Beach Regional. Anne is especially deserving of the award because of the calm and courteous way she treats the players, the volunteers, and her fellow directors. Thanks to Anne for all of her contributions to making District 6 tournaments a success!

A number of our most experienced directors are winding down their directing careers. District 6 encourages club directors, cruise ship directors and sectional tournament level directors to take advantage of courses that ACBL offers. These courses are designed to enhance director skills and help participants advance to a level where they can set up and run sectional and regional tournaments. One such class is the Club Director Update Course, which Doug Grove will teach before the start of the 2016 Williamsburg Regional in two three-hour sessions on Sunday evening, Feb. 28 and Monday morning, Feb. 29. The cost is 25.00. See the ad on p.7 of this *TableTALK* for more details.

—Shawn Stringer,
301-275-6363, shstringer@aol.com

TO GET ON AN EMAIL LIST FOR **BRIDGE NEWS & BRIDGE PROBLEMS**, SEND A
NOTE REQUESTING SUCH TO STEVE ROBINSON AT ROBINSWR1941@GMAIL.COM



idbids

page

District 6 President's

Message . . . inside cover
Shawn Stringer

District 4 Regional:

Wilmington, DE
Mar 28-Apr 3 2

District 7 Regional:

Gatlinburg, TN
Apr 11-17 4

Renowned Bridge Courses

Offered at the Williamsburg Regional 7

Denver Delights 11

from District Director,
Margot Hennings

District 6 STaC:

May 2-8 13

ACBL to Support Local

Charities—Nominate your Charity for a Contribution 16



Ace Analyses

page

Congratulations to Last

Year's New Life Masters from District 6 17

1-Year District 6

Calendar of Events . . . 20

Grand National Teams 2015-

2016—Get Your Open, B or C Team Together back cover



Locating Games

REGIONALS

page

Williamsburg, VA
Feb 29-Mar 6 3

SECTIONALS

Fairfax, VA
Feb 18-21 6

Charlottesville, VA
Mar 11-13 7

Fredericksburg, VA
Mar 18-20 8

Norfolk/Va Beach, VA
Apr 1-3 9

Lynchburg, VA
Apr 1-3 10

Silver Spring, MD
Apr 7-10 11

Fairfax, VA
May 12-15 12

Cambridge, MD
May 19-21 13

Williamsburg, VA
May 20-22 14

Front Royal, VA
May 20-22 15

Blacksburg, VA
Jun 3-5 16

Norfolk/Va Beach, VA
Jun 3-5 17

Kensington, MD NLM
Jun 4-5 18

Baltimore, MD
Jun 10-12 19

Richmond, VA
Jun 24-26 . . . 20



Keeping Winners

page

Cambridge, MD

D6 Regional Winners . . . 6

Denver, CO NABC

D6 National Winners . . . 8

District 6 TableTALK

(ISSN#1543-3978)

TableTALK cannot guarantee postal delivery. If you miss an issue, please see:

www.districtsix.org
www.mabcbridge.org
or www.acbl.org

for tournament information.

WILMINGTON, DE DISTRICT 4 REGIONAL

—DELAWARE' "FIRST STATE" REGIONAL—
CROWNE PLAZA WILMINGTON
630 Naamans Road ♦ Claymont, Delaware 19703
302-792-2700



NLM & GOLD RUSH SCHEDULE OF EVENTS

Speakers: Tuesday - Saturday: 12:15pm

NLM PAIRS (0-750)

STRATIFIED BY ATTENDANCE, SINGLE SESSIONS

9am & 1pm ...Tuesday - Saturday

GOLD RUSH PAIRS (0-300/300-750)

MUST PLAY BOTH SESSIONS.

1 & 7pmTues, Wed, Fri

GOLD RUSH SWISS TEAMS

(0-300/300-750)

MUST PLAY BOTH SESSIONS.

1 & 7pmThursday

**0-5 Pairs Play Free
on Tuesday!**

REGIONAL TOURNAMENT COMMITTEE

Chairs:

Bruce and Judy Gwaltney

judygwalt@verizon.net

(302) 478-2396

Co-Chair:

Jeff Ruben, jmrdel@aol.com

302-475-0469

PARTNERSHIPS

Anne Priebe, annepriebe@comcast.net

(302) 593-1906

**For additional information, go to
district4.info**

SCHEDULE OF OPEN EVENTS

MONDAY, MARCH 28

7pm Bracketed Mon-Tues KO Teams
(*CONT. 9AM, 1 & 7PM TUE*)
Stratified Open Pairs (750/3000/3000+)

TUESDAY, MARCH 29

9am ...Stratified Morn Side Game Series (750/3000/3000+)
1 & 7pm Bracketed Tues-Wed KO Teams (*CONT. 1 & 7PM WED*)
Stratified Open Pairs (1500/3000/3000+)
Stratified Side Game Series I (750/3000/3000+)
Gold Rush Pairs (0-300/300-750)

7pm ...Stratified BAM Teams (750/3000/3000+)

WEDNESDAY, MARCH 30

9am ...Stratified Morning Side Game Series (750/3000/3000+)
Compact Morn Bracketed Wed-Thurs KOs (*CONT. 9AM THURS*)
1 & 7pm Bracketed Wed-Thurs KO Teams (*CONT. 1 & 7PM THURS*)
Stratified Open Pairs (1500/3000/3000+)
Stratified Side Game Series I (750/3000/3000+)
Gold Rush Pairs (0-300/300-750)

7pm ...Stratified Swiss Teams (750/3000/3000+)

THURSDAY, MARCH 31

9am ...Stratified Morning Side Game Series (750/3000/3000+)
Stratified Swiss Teams (750/3000/3000+)
1 & 7pm Stratified Open Swiss Teams (1500/3000/3000+)
Stratified Open Pairs (750/3000/3000+)
Stratified Side Game Series II (750/3000/3000+)
Gold Rush Swiss Teams (0-300/300-750)

FRIDAY, APRIL 1

9am ...Stratified Morning Side Game Series (750/3000/3000+)
Compact Morn Bracketed Fri-Sat KOs (*CONT. 9AM SAT*)
1 & 7pm Bracketed Fri-Sat KO Teams (*CONT. 1 & 7PM SAT*)
Stratified Open Pairs (1500/3000/3000+)
Stratified Side Game Series II (750/3000/3000+)
Gold Rush Pairs (0-300/300-750)

7pm ...Stratified BAM Teams (750/3000/3000+)

SATURDAY, APRIL 2

9am ...Stratified Morning Side Game Series (750/3000/3000+)
Stratified Swiss Teams (750/3000/3000+)
1 & 7pm Open Pairs (*QUALIFY W/BAROMETER FINAL*)
Stratified B/C/D Pairs (500/1500/3000)
Stratified Side Game Series II (750/3000/3000+)

SUNDAY, APRIL 3

10am ...Bracketed Round Robin Swiss—7 rounds
*LUNCH TICKETS WILL BE SOLD ON SUNDAY MORNING
DURING REGISTRATION.*



CROWNE PLAZA WILMINGTON

630 Naamans Road
Claymont, DE 19703

—Located at I-95 and Naamans Road—

—15 MINUTES—
FROM PHILADELPHIA AIRPORT

♦ **FREE PARKING** ♦

302-792-2700

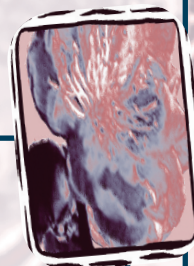
Room Rate

\$116 Single/Double

Reservation

Deadline:

February 26, 2016



TOURNAMENT NOTICES

- ♦ Mid-chart conventions in separate Open and Top Bracket KO events.
- ♦ KOs may be handicapped at the discretion of the director.

WILLIAMSBURG, VA MID-ATLANTIC REGIONAL



Williamsburg DoubleTree by Hilton

50 Kingsmill Road ♦ Williamsburg, VA 23185 ♦ Free parking ♦ Free WiFi ♦ Indoor pool/Fitness center
 Call (757) 220-2500 and mention "BRIDGE" for the \$87 (plus tax) rate. If full, Courtyard by Marriott (less than 1 mile from DoubleTree), 470 McLaws Circle: Call (757) 221-0700 and mention "Mid-Atlantic Bridge" for the \$87 (plus tax) rate

MONDAY, FEBRUARY 29

Leap Day Open Pairs
 1500/3000/3000+1 & 7
 Leap Day GOLD RUSH Pairs1 & 7
 I/N Pairs 5/20/50 & 100/300/500 ..1/7
 Kickoff KO1 & 7
 CONTINUES 1 & 7 TUESDAY
 Williamsburg Side Series
 (1st, 2nd of 6)1/7
 Stratified Swiss Teams7
 AFTERNOON GAMES BENEFIT ACBL Ed.
 FOUNDATION; EVENING GAMES BENEFIT
 WOUNDED WARRIOR PROJECT

TUESDAY, MARCH 1

Fort Story Compact KO9
 Two 12-BOARD MATCHES; CONTINUES 9 AM WED
 Jamestown Morning Side Series
 (1st of 5)9
 I/N Pairs 5/20/50 & 100/300/500...9/1/7
 0-5 MP PLAYERS FREE TODAY
 Open Pairs 1500/3000/3000+1 & 7
 Colonial I GOLD RUSH Pairs1 & 7
 Fort Eustis KO1 & 7
 CONTINUES 1 & 7 WEDNESDAY
 Williamsburg Side Series
 (3rd, 4th of 6)1/7
 Stratified Board-a-Match Teams7
 I/N Swiss Teams 100/300/5007

WEDNESDAY, MARCH 2

Early Bird Open Pairs
 1500/3000/3000+9
 TWO SESSIONS; CONTINUES 9 AM THURSDAY
 Early Bird GOLD RUSH Swiss9
 TWO SESSIONS; CONTINUES 9 AM THURSDAY
 Jamestown Morning Side Series
 (2nd of 5)9
 I/N Pairs 5/20/50 & 100/300/500..9/1/7
 Open Pairs 1500/3000/3000+1 & 7
 Colonial II GOLD RUSH Pairs1 & 7

WEDNESDAY, continued...

Langlely KO1 & 7
 CONTINUES 1 & 7 THURSDAY
 Williamsburg Side Series
 (5th, 6th of 6)1/7
 Stratified Swiss Teams7
 I/N Swiss Teams 100/300/5007

THURSDAY, MARCH 3

Jamestown Morning Side Series
 (3rd of 5)9
 I/N Pairs 5/20/50 & 100/300/500..9/1/7
 A/X Swiss 0-5000/5000+1 & 7
 Bracketed Flight B Swiss 0-3000 ..1 & 7
 8 TEAMS PER BRACKET; 3 IN EACH WIN GOLD
 Lafayette Side Series (1st, 2nd of 4) 1 & 7
 Stratified Board-a-Match Teams7

FRIDAY, MARCH 4

Camp Peary Compact KO9
 Two 12-BOARD MATCHES; CONTINUES 9 AM SAT.
 Jamestown Morning Side Series
 (4th of 5)9
 I/N Pairs 5/20/50 & 100/300/500 9/1/7
 Open Pairs 1500/3000/3000+1 & 7
 Colonial III GOLD RUSH Pairs1 & 7

- STRATS DETERMINED BY MP AVERAGES, BUT NO PLAYER MAY EXCEED EVENT LIMIT
- OPEN EVENTS AND SIDE SERIES ARE STRATIFIED 0-750/750-3000/3000+, UNLESS NOTED
- GOLD RUSH PAIRS (300/750) AWARD GOLD POINTS TO OVERALL WINNERS AND 0-750 SECTION TOPS; RED POINTS TO 0-300 STRAT
- ALL KOs ARE BRACKETED, RANDOM DRAW AND INCLUDE 0-300 PLAYERS; ONE- AND TWO-BRACKET KOs ARE HANDICAPPED
- UNDER 500 MP EVENTS STRATIFIED BASED ON ATTENDANCE

It's Leap Year! Enjoy your extra day playing bridge!

FRIDAY, continued...

Naval Weapons KO1 & 7
 CONTINUES 1 & 7 SATURDAY
 Lafayette Side Series (3rd, 4th of 4) ..1/7
 Stratified Swiss Teams7
 I/N Swiss Teams 100/300/5007

SATURDAY, MARCH 5

Jamestown Morning Side Series
 (5th of 5)9
 I/N Pairs 5/20/50 & 100/300/500..9/1/7
 Stratified Swiss Teams9
 Open Pairs 1500/3000/3000+1 & 7
 Colonial IV GOLD RUSH Pairs1 & 7
 Fort Monroe KO1 & 7
 CONTINUES 10 AM & TBA SUNDAY
 Yorktown Side Series (1st, 2nd of 4) ..1/7
 Stratified Board-a-Match Teams7
 I/N Swiss Teams 100/300/5007

SUNDAY, MARCH 6

A/X Swiss 0-5000/ 5000+10 & TBA
 Bracketed Flight B Swiss 0-3000 10 & TBA
 8 TEAMS PER BRACKET; 3 IN EACH WIN GOLD
 Yorktown Side Series (3rd, 4th of 4) ...10/2
 I/N Pairs 5/20/50 & 100/300/500...10/2

The Hilton is near Colonial Williamsburg, the largest living history museum in the U.S.

Directions:
 Interstate 64 to Route 199 (Busch Gardens), Exit 242A. Turn right onto Rt 60 East, right again at 4th traffic signal to Kingsmill on the James. Plenty of free parking.

Tournament Chair

Jane Farthing
 jane.farthing@gmail.com
 (703) 850-9635 (c)
 (757) 229-7275 (h)

Partnerships
 Ron Alldaffer
 ralldaffer@charter.net
 (757) 613-9326 (c)
 (757) 279-0230 (h)

Popular District 6 Intermediate/Novice Program

- Five Gold Rush Pair Games
- Morning Gold Rush Swiss
- Expert speakers before afternoon and evening games
- I/N partners guaranteed up to 1 hour before game time

Fine Virginia hospitality every night!



Hosted by

FEBRUARY 29-MARCH 6, 2016

District 6

GATLINBURG, TN MID-ATLANTIC REGIONAL

When you make your reservation with **Host & Sponsor hotels**, please tell them you are part of the **Gatlinburg Regional Bridge Tournament!** Most of our **Host/Sponsor hotels** are holding rates at or near **2015 prices**, but check for other fees and taxes. Our **host hotels** are within walking distance of the **Convention Center** or provide shuttle service.

Clarion Inn & Suites 1100 Parkway (800) 933-0777 clariongatlinburg.info HB,WiFi,R,M,CM,Fit,HP,HT,TR, Bal Your top choice for affordable luxury. \$110 (double queen or single king). \$160 (1-BR suites featuring J,FP). Other hotel fees may apply. Reserve by 3/15.

Econo Lodge on the River 310 Cottage Drive (800) 933-8670 reaganhotels.com WiFi,R,CM,TR 3 blocks from Conv. Ctr. Rooms with private balconies overlooking the river available. From \$76.99.

The Edgewater Hotel 402 River Road (800) 423-9582 edgewater-hotel.com CB,WiFi,R,M,CM,Fit,G,TR,Bal Interior corridors w/covered parking—within walking distance to Conv. Ctr.

Gatlinburg Inn 755 Parkway (865) 436-5133 gatlinburginn.com B,WiFi,HP Great downtown location, 100 yds to Conv. Ctr. Rooms from \$79 to \$199. Newly remodeled rooms.

Glenstone Lodge 504 Historic Nature Trail (800) 362-9522 glenstonelodge.com R,CM,WiFi,FP,HP,HT,TR,Bal,I/OP Newly remodeled spacious rooms. \$86 (double Q or K). Use code "bridge." 4-min. walk to Conv. Ctr. Restaurant with breakfast buffet (\$8.95). Outstanding customer service.

Hampton Inn 967 Parkway - 50 yards from Conv. Ctr. (888) 476-6597 or (865) 436-4878 hamptoninn.com HB,WiFi,M,R,HP,Bal Recently remodeled; located 1/2 block from Conv. Ctr. Close to downtown restaurants and attractions.

Hilton Garden Inn Gatlinburg 635 River Road (877) 742-8444 hiltongardeninn.com WiFi,R,M,CM,TS Gatlinburg's newest premier hotel in the heart of downtown. Restaurant with full bar, in-room dining. Variety of rooms. Reserve before 3/16.

Mountain House Inn Downtown 247 Newton Lane (800) 462-7298 or (865) 436-6626 mountainhousemotorinn.com WiFi,M,CM,I/OHP,Bal,S,TS,WP From \$60 double queen or king w/sleeper sofa. 40" smart flat screen TV, 2 blks from Conv. Ctr.

Old Creek Lodge 680 River Road (888) 430-7200 oldcreeklodge.com B,WiFi,Bal,M,R Large riverfront rooms with many extras! Close to Conv. Ctr. Specify Tournament rate to get lowest rate available starting @ \$91.

Quality Inn Creekside 125 LeConte Creek Drive (800) 473-8319 qualityinn.com HBR,M,CM Secluded but convenient to Conv. Ctr. Some rooms w/balconies over a mountain stream. From \$90.

Reagan Resorts Inn 938 Parkway (800) 933-

For up-to-date information & maps and all Host/Sponsor Hotel information, visit our website at: www.gatlinburgregional.org

8674 reaganhotels.com R,WiFi,CM,CB Directly next door to Conv. Ctr., on the main Parkway. Jacuzzi rooms available. From \$111.99/night.

Royal Townhouse Motor Inn 937 Parkway WiFi,CM,R,TR (800) 433-8792 or (865) 436-5818 Across the street from Conv. Ctr. \$67.95+tax, 1-4 guests.

Sidney James Mountain Lodge 610 Historic Nature Trail (800) 876-6888 sidneyjames.com WiFi,R,CM,IP,TS 186 units w/balconies over mountain stream. Suites with FP and Jacuzzis. On-site café. From \$70.

The following hotels, motels, and condominiums are our SPONSORS.

Best Western Crossroads Inn 440 Parkway (800) 925-8889 HB,WiFi,R,M,CM,HP,TR Large spacious rooms, restaurant, from \$79.99.

Best Western Twin Islands 539 Parkway (800) 223-9299 HB,WiFi,R,M,CM,HP,HT Most balconies overlook water, riverwalk. From \$89.99.

Brookside Resort & Event Center 463 E. Parkway CB,WiFi,Bal,FP,TR brooksideresort.com (800) 251-9597 Spacious creekside rooms, shortcut to Conv. Ctr. From \$79 (mention Bridge tourney, get 15% discount).

Chalet Inn 516 Sunset Dr (800)-933-8675 reaganhotels.com WiFi,R,CM 3+ blocks from Conv. Ctr. Rates from \$66.99.

Country Inn & Suites 421 Reagan Lane (865)-412-1004 countryinns.com gatlinburgtn.com HB,IP,USA,WiFi,WD,Bal Gatlinburg's newest select service hotel located downtown; 1 block from Conv. Ctr.

Courtyard by Marriott-Gatlinburg 315 Historic Nature Trail (888)-236-2427 WiFi Gatlinburg's newest upscale hotel. Located across from Conv. Ctr. and steps from downtown. Bistro open for breakfast, lunch, dinner.

Days Inn & Suites (800) 294-2113 1109 Parkway B,WiFi,R,M,CM,G,USA daysinns.com smoky-mountains.com Walking distance to Conv. Ctr. and major restaurants. Deluxe room with K or 2 Qs from \$79. Suites and Jacuzzis are 15% off.

Fairfield Inn and Suites 168 Parkway B,WiFi,I/OP,Fit,TS marriott.com gtlnc.com (866) 430-3659 Award winning hotel with all new look inside. Rates from \$99 weekdays.

Gatlinburg Chateau Rentals 102 Baskins Creek Bypass (800) 780-0586 TR,K Located 1/2 mile from Conv. Ctr. Two BR condos. From \$109.

Gillette Motel 235 Historic Nature Trail (800) 437-0815 or (865) 436-5601 gillettemotel.com WiFi,R,M,CM Directly across from Conv. Ctr.

Some rooms have Jacuzzis.

Greystone Lodge on the River 559 Parkway greystonelodge.com (800) 451-9202 or (865) 436-5621 CB,WiFi,R,CM,Fit,G,HP,TS,Bal 3-yr. renovation project comp. 1/2 mile from Conv. Ctr. centrally located in heart of downtown adjacent to Ripley's Aquarium. Rms. overlook mountain stream. Exc. auto access/parking. \$85 (queen/king).

Holiday Inn Club Vacations® Smoky Mountain Resort 235 Historic Nature Trail (866) 327-3014 bit.ly/1vhtQB K,M,R,WiFi,CM,Bal,Fit,FP,HP,HT,WD,WP Large villas—all the luxuries of home, beautiful views; 2 blocks from Conv. Ctr. 1-BR villa—\$149; 2-BR villa—\$203; min. stay 2 nights. Reserve by 3/1/16. Group Code: GBT.

Laurel Inn Condominiums 354 East Holly Ridge Road WiFi,K,FP (800) 548 2076 laurelinncondo.com 1 and 2 BR, fully equipped condos, some with Jacuzzis. From \$89.

Microtel 11 Historic Nature Trail WiFi,HBO (866) 399-0107 microtelinn.com Across from the Conv. Ctr. Rooms feature one queen bed; 2-room suites available.

Motel 6 309 Ownby St WiFi,R,M,TR motel6gatlinburg.com (800) 233-0325 Close to Conv. Ctr. and major restaurants. Deluxe rooms with K or 2 Qs from \$59. Suites & Jacuzzi 15% off.

Oak Square Condominiums 685 River Road (800) 423-5182 gatlinburggoaksquare.com WiFi,K,TR Condo luxury at motel prices. 1 & 2-BR suites. Near Conv. Ctr. From \$89.

Olde Gatlinburg Rentals 306 Baskins Creek Road (888) 432-3701 WiFi,TS,Bal,K oldegatlinburgrentals.com Luxury 1 & 2-BR condos. From \$79

Parkview Inn 200 E. Parkway (865) 436-5043 parkviewinn14@gmail.com WiFi,CM Weekday rate \$49.99; Fri-Sat \$54.99.

Sleep Inn & Suites 335 East Parkway CB,WiFi,CM,IP,Fit,WD sleepinggatlinburgtn.com (866) 753-3717 2 double beds: \$65.99. Kings available.

Summit Manor Condominiums 125 LeConte Creek Dr. (866) 712-1319 or (800) 473-8319 summitmanorgatlinburg.com Adjacent to and managed by the Quality Inn Creekside. Fully furnished 1-BR unit \$119.99, 2 BR unit \$209.99. Stay 6 nights, 7th is free.

Zoder's Inn & Suites zoders.com 402 Parkway (800) 720-5228 WiFi,R,IP,Fit,CM,CB,TR,Bal Rooms, suites, and cottages from \$79/night to \$232/night with 10% off for bridge players.

Ask for Tournament Rate! In some cases, a limited number of rooms are available at the quoted rate.

TOURNAMENT CHAIRS

Julia & Pete Misslin: 423-884-3550
pmisslin@tds.net

PARTNERSHIPS

Dr. Eldon Clayman: 828-439-1283
brdgbums@hci.net

INTERMEDIATE/NOVICE CHAIR

Doris Pennala: 248-293-9798
doryannp@yahoo.com

Mid-Atlantic Partnership Desk:

http://bridgefinesse.com/PDeskGatlinburg_2016.html

Fast Results:

FastResultsHelpDesk@gmail.com
Email your ACBL# (in subject line).
If you want a headshot photo linked to your name so it will appear in the online results page, send the photo to Help@TheCommonGame.com, with your ACBL# in the subject line.

Entry Fees: \$11/person/session
(\$4 ADDITIONAL FOR NON OR UNPAID ACBL MEMBERS)

Credit Card Purchases: Entry vouchers for any Gatlinburg event may be purchased using a debit card or major credit card (VISA, MasterCard, Discover, AMEX). See the *Daily Bulletin* for details.

◆ Times pm except where indicated.
◆ **Gold Point Events in Bold Letters.**

EASYBRIDGE! Accreditation

9am-noon, Wed Apr 13 or Sat Apr 16
Convention Center Hall 1

BECOME A CLUB DIRECTOR

Course offered Fri Apr 8-Sun Apr 10
Convention Center Room 12

For information on the above courses, contact: Priscilla Smith, 770-973-7717

TAP Seminar: Apr 14-15-16

Thurs-Fri-Sat 8:30am-noon,
To enroll email education@acbl.org

"PERFUME/COLOGNE" FREE

AIRPORT TAXI SERVICE: Paradise Taxi, (865- 659-1380), \$65 for 1-4; \$10 each additional. Call early to ensure reservations. No extra fees for passengers staying at different locations as long as they are in the downtown area. **HOTEL AMENITY CODES:** B=Breakfast; Bal=Private Balcony; CB=Continental Breakfast; CM=Coffee Maker; Fit=Fitness Center; FP=Fireplace; G=Garage Parking; HB=Hot Breakfast; HP=Heated Pool; HT=Hot Tub; I/OP=Indoor/Outdoor Pool; IP=Indoor Pool; K=Full Kitchen; M=Microwave; P=Pool; R=Refrigerator; S=Shuttle Service; TR=On Trolley Route, stop nearby; TS=Trolley Stop; USA=USA Today free; WD=Washer/Dryer; WP=Whirlpool Tub; *All hotels have Cable TV.* ◆KOs matched by random draw every round & guaranteed to finish in 3 or 4 rounds. Compact KO teams limited to 4 members. ◆Unless otherwise indicated, masterpoint ranges for stratified events: 3000+/750-3000/0-750. Strati-Flighted events: A=5000+ X=0-5000, B/C/D=1500-3000/ 750-1500/0-750. ◆The top bracket may be handicapped. ◆Single-session pairs are always accommodated. ◆I/N Partners guaranteed one hour before game time. ◆Under 300 MP events stratified at director's discretion. ◆All events are stratified by average MPs. (Exception: When an event has an upper MP limit, all players must have fewer than that number of MPs.)

GATLINBURG, TN MID-ATLANTIC REGIONAL

America's Favorite Regional

GATLINBURG CONVENTION CENTER — PARKWAY & HISTORIC NATURE TRAIL

World-Class Speakers

Tues-Sat: 12:15 & 6:45pm
in Hall 1 in the I/N area

New! Monday KO's start at 1 p.m.! New! Swiss events have been added in the mornings.

MONDAY, APRIL 11

ALL 1 PM GAMES BENEFIT THE ACBL EDUCATIONAL FOUNDATION. ALL 7:30 PM PAIR GAMES BENEFIT LOCAL CHARITY.

Millard Nachtwey Monday Open KO's1 & 7:30
CONTINUE 1 & 7:30 TUESDAY.

100/200/300 & 5/20/50 Stratified Pairs . .1 / 7:30
(SINGLE SESSIONS)

Stratified Mid-Flight (0-1500, 1500-3000) Pairs
1 & 7:30

Stratified Open (0-5000 & 5000+) Pairs 1 & 7:30

Trillium Stratified 300/750 GOLD RUSH Pairs
(0-300 RED, 300-750 GOLD)1 & 7:30

Rocky Top Stratified Side Game Series . . .1 / 7:30
(1ST & 2ND OF 6 SESSIONS)

Clingman's Dome Dinner Bell Compact KO's . .4:45
FIRST OF FOUR 12-BOARD MATCHES. FINISH APPROXIMATELY 6:30. CONTINUE 4:45 TUES, WED, THURS.

Strati-Flighted Swiss Teams7:30

100/200/300 Swiss Teams7:30

Stratified Board-a-Match Teams7:30

TUESDAY, APRIL 12

Gregory Bald (0-5000, 5000+) Swiss Teams .9 am

Laurel Falls Mid-Flight (0-1500/1500-3000) Swiss Teams9 am

Columbine GOLD RUSH (300/750) Swiss Teams 9 am
GREGORY BALD, LAUREL FALLS, AND GOLD RUSH SWISS TEAMS ALL CONTINUE 9 AM WEDNESDAY.

Early Bird Stratified Open Pairs9 am & 1

Laurel Falls Compact Morning KO's9 am
TWO 12-BOARD MATCHES. FINISH BY NOON. CONT. 9 AM WED.

Elkmont Stratified Side Game Series9 am
(1ST OF 5 SESSIONS)

Sunrise 100/200/300 & 5/20/50 Stratified Pairs 9 am

Stratified Mid-Flight (0-1500, 1500-3000) Pairs1 & 7:30

Stratified Open (0-5000, 5000+) Pairs . .1 & 7:30

Dogwood Stratified 300/750 Gold Rush Pairs 1 & 7:30

Gene Roy Tuesday Open KO's1 & 7:30
CONTINUE 1 & 7:30 WEDNESDAY.

Rocky Top Stratified Side Game Series . . .1 / 7:30
(3RD & 4TH OF 6 SESSIONS)

0-5 Pairs (Free Today)1 / 7:30

100/200/300 & 5/20/50 Stratified Pairs . .1 / 7:30

Susie Clayman Dinner Bell Compact KO's4:45

FIRST OF FOUR 12-BOARD MATCHES. FINISH APPROXIMATELY 6:30. CONTINUE 4:45 WEDNESDAY, THURSDAY, FRIDAY.

Strati-Flighted Swiss Teams7:30

Stratified Board-a-Match Teams7:30

100/200/300 Swiss Teams7:30

WEDNESDAY, APRIL 13

The Sinks Open KO's9 am
THREE SESSIONS. CONTINUE 9 AM THURSDAY & FRIDAY.

Elkmont Stratified Side Game Series9 am
(2ND OF 5 SESSIONS)

Sunrise 100/200/300 & 5/20/50 Stratified Pairs 9 am

Marci Buehler Wednesday Open KO's1 & 7:30
CONTINUE 1 & 7:30 THURSDAY.

Stratified Mid-Flight (0-1500, 1500-3000) Pairs1 & 7:30

Stratified Open (0-5000, 5000+) Pairs . .1 & 7:30

Azalea Stratified 300/750 Gold Rush Pairs 1 & 7:30

Rocky Top Stratified Side Game Series . . .1 / 7:30
(5TH & 6TH OF 6 SESSIONS)

100/200/300 & 5/20/50 Stratified Pairs . .1 / 7:30

Tremont Dinner Bell Compact KO's4:45
FIRST OF FOUR 12-BOARD MATCHES. FINISH APPROXIMATELY 6:30. CONTINUE 4:45 THURSDAY, FRIDAY, SATURDAY.

Strati-Flighted Swiss Teams7:30

Stratified Board-a-Match Teams7:30

100/200/300 Swiss Teams7:30

THURSDAY, APRIL 14

Sugarlands (0-5000, 5000+) Swiss Teams . .9 am

Abrams Falls Mid-Flight (0-1500/1500-3000) Swiss Teams9 am

Violets GOLD RUSH (300/750) Swiss Teams 9 am
SUGARLANDS, ABRAMS FALLS, AND GOLD RUSH SWISS TEAMS ALL CONTINUE 9 AM FRIDAY.

Early-Bird Stratified Open Pairs9 am & 1

Metcalf Bottoms Compact KO's9 am

Elkmont Stratified Side Game Series9 am
(3RD OF 5 SESSIONS)

Sunrise 100/200/300 & 5/20/50 Stratified Pairs 9 am

Vince Carcello Thursday Open KO's1 & 7:30
CONTINUE 1 & 7:30 FRIDAY.

Stratified Mid-Flight (0-1500, 1500-3000) Pairs1 & 7:30

Stratified Open (0-5000, 5000+) Pairs . .1 & 7:30

Rhododendron Stratified 300/750 GOLD RUSH Pairs1 & 7:30

Mt. LeConte Stratified Side Game Series . .1 / 7:30
(1ST & 2ND OF 4 SESSIONS)

100/200/300 & 5/20/50 Stratified Pairs . .1 / 7:30

Strati-Flighted Swiss Teams7:30

Stratified Board-a-Match Teams7:30

100/200/300 Swiss Teams7:30

FRIDAY, APRIL 15 - Goodwill Day!

Chimneys Compact Morning KO's9 am
TWO 12-BOARD MATCHES. CONTINUE 9 AM SATURDAY.

Elkmont Stratified Side Game Series9 am
(4TH OF 5 SESSIONS)



Friday, continued...

Sunrise 100/200/300 & 5/20/50 Stratified Pairs 9 am

Marlene Wass Friday Open KO's1 & 7:30
CONTINUE 1 & 7:30 SATURDAY.

Stratified Mid-Flight (0-1500, 1500-3000) Pairs1 & 7:30

Stratified Open (0-5000, 5000+) Pairs . .1 & 7:30

Iris Stratified 300/750 GOLD RUSH Pairs 1 & 7:30

Mt. LeConte Stratified Side Game Series . .1 / 7:30
(3RD & 4TH OF 4 SESSIONS)

100/200/300 & 5/20/50 Stratified Pairs . .1 / 7:30

Strati-Flighted Swiss Teams7:30

Stratified Board-a-Match Teams7:30

100/200/300 Swiss Teams7:30

Lose-N-Snooze KO's11:00

2nd Chance Late Night Speedball Bracketed KO's 12 am

SATURDAY, APRIL 16

Grotto Falls Compact KO's9 am & 1
FOUR 12-BOARD MATCHES. FINISH IN ONE DAY.

Elkmont Stratified Side Game Series9 am
(FINAL SESSION)

Sunrise 100/200/300 & 5/20/50 Stratified Pairs 9 am

Cades Cove Compact KO's1 & 7:30
FOUR 12-BOARD MATCHES. FINISH IN ONE DAY.

Stratified Mid-Flight (0-1500, 1500-3000) Pairs1 & 7:30

Stratified Open (0-5000, 5000+) Pairs . .1 & 7:30

Redbud Stratified 300/750 GOLD RUSH Pairs 1 & 7:30

Newfound Gap Stratified Side Game Series 1 / 7:30
(1ST & 2ND OF 4 SESSIONS)

100/200/300 & 5/20/50 Stratified Pairs . .1 / 7:30

Strati-Flighted Swiss Teams7:30

Stratified Board-a-Match Teams7:30

100/200/300 Swiss Teams7:30

"Groundhog Day" Zip KO's (Free)11:00
NEW MATCHES AND NEW BRACKETS ADDED UNTIL THE LAST PLAYER FALLS ASLEEP

SUNDAY, APRIL 17

Two-Session Swiss: Seven 7-Board Matches 10 am
ENTRY INCLUDES LUNCH. AXXY SWISS (0-4000, 4000-6000, 6000+); BRACKETED FLIGHT B SWISS TEAMS (NO PLAYER OVER 3000 MPs); 8 TEAM BRACKETS BY MPs - 3 TEAMS IN EACH BRACKET WIN GOLD.

Newfound Gap Stratified Side Game Series 10 am / 2
(3RD & 4TH OF 4 SESSIONS)

100/200/300 & 5/20/50 Stratified Pairs 10 am / 2

100/300/500 Stratified Swiss Teams . . .10 am / 2
(SINGLE SESSIONS)

Hosted by ♦ APRIL 11-17, 2016 ♡ District 7 ♠

New! Mid-Flight (0-1500, 1500-3000) pairs games Mon-Sat! Sunday Swiss now includes A/X/Y (0-4000, 4000-6000, 6000+)

**NVBA WILLIAM POISSANT
MEMORIAL TOURNAMENT**

The Arlington/Fairfax Elks Lodge #2188
8421 Arlington Boulevard, Fairfax, VA ♦ 703-560-2213

THURSDAY, FEBRUARY 18

STRATIFIED OPEN PAIRS (2000+/2000/750) or 500/300/100 PAIRS10:30 a.m.

Norma's Game: K of C Hall, 5115 Little Falls Rd., Arlington, VA, 703-892-1292

*Evening games at: NVBA: Beth El Hebrew Congregation, 3830 Seminary Road, Alexandria, VA and
WBL: Ohr Kodesh Congregation, 8300 Meadowbrook Ln, Chevy Chase, MD* **NVBA (Beth El) WBL**

Intermediate/Newcomer Lecture6:30 p.m.

STRATAFLIGHTED OPEN PAIRS (A/X=3000+/3000; B/C=2000/750)7:00 p.m. 7:30 p.m.

NVBA 199ER SWISS TEAMS (200/100/50/20); WBL NLM PAIRS (NLM/100/50) 7:00 p.m. 7:30 p.m.

FRIDAY, FEBRUARY 19

Gene's Friday Morning Game at KOCH:9:30 a.m.

STRATIFIED OPEN (2000+/2000/750) or 500/300/100 PAIRS (NLMs only)

...REST OF TOURNAMENT AT ELKS LODGE...

Intermediate/Newcomer Lecture1:15 p.m.

STRATAFLIGHTED A/X (3000+/3000) or B/C (2000/750) PAIRS 2 p.m.

I/N (500/300/100) or 49ER (50/20/5) PAIRS2 p.m.

TRIPLE NICKEL SWISS—5 rounds, 5 boards, 5 minutes a board .7:30 p.m.

I/N (500/300/100) PAIRS7:30 p.m.

***** Join the FUNd! *** —\$1 extra/game Sat. & Sun.
means extra fun at this Summer's DC NABC!**

SATURDAY, FEBRUARY 20

STRATAFLIGHTED A/X (3000+/3000) or B/C (2000/750) PAIRS 9:30 a.m.

I/N (500/300/100), 49ER (50/20) or NEWCOMER (0-5) PAIRS ..9:30 a.m.

Intermediate/Newcomer Lecture1:15 p.m.

TROPHY EVENT: WILLIAM POISSANT MEMORIAL PAIRS

(2 SESSIONS – Qualifying and Barometer Final)2 & 7:30 p.m.

STRATIFIED OPEN PAIRS (2000+/2000/750; Single session) ...2 p.m.

I/N (500/300/100) or 49ER (50/20/5) PAIRS2 p.m.

STRATIFIED OPEN CONSOLIDATION (2000+/2000/750) ...7:30 p.m.

—Open to Non-Qualifiers and New Entrants.

I/N (500/300/100) PAIRS7:30 p.m.

SUNDAY, FEBRUARY 21

FLIGHTS A/X (5000+/5000) BOARD-A-MATCH TEAMS 11 a.m. & TBA

BRACKETED FLIGHT B TEAMS (no single player >2500) ..11 a.m. & TBA

B Teams Bracketed by Total Team Masterpoints: three overall places in each.

A/X Swiss & B Teams: 2-session events, a brief break & food available on-site.

I/N (500/300/100) SWISS TEAMS (Single sessions) ..11 a.m. / 3:15 p.m.

49ER (50/20/5) SWISS TEAMS (Single session)11 a.m.

STRATIFICATION of events is based on average masterpoints of the team or pair. In any event or flight with an upper limit, no individual's total Masterpoint holding may exceed that upper limit.

DIRECTIONS: From Route 50/Arlington Boulevard heading west from DC and Arlington AND from Route 495/Beltway: Continue on/Take Route 50 West about one mile outside the Beltway, and turn left at Javier Road (the second stoplight after the intersection of 50 and 495). Take an immediate right onto the access road that runs parallel to Route 50. The Elks Lodge will be two buildings down on your left—parking on the side and in the rear. **From Fairfax, heading East on Route 50:** Pass the intersection of Route 50 and Prosperity Avenue—the Prosperity Medical Center will be on your right. Between the first and second lights after Prosperity, turn right into the access road that runs parallel to Route 50 and look for the Elks Lodge immediately to your right—parking on the far side of the building and in the rear.

Plenty of free parking! On-site snack bar plus lots of free treats! Many great restaurants nearby!

Championship Events and a Full Schedule of 299er Events for Novice and Intermediate Players!

Players with 0-5 Masterpoints play FREE in ALL games!

Tournament Chair

*Margot Hennings,
703-560-0245*

Partnership Chair

*Marty Bley
nvbapartnerships@gmail.com
240-441-9885 (C)*

Mid-Chart Conventions permitted in all A/X Events

**Next NVBA Sectional
May 12-15 at Arlington/
Fairfax Elks Lodge
(Thurs at Beth El)**

www.nvba.org

**Cambridge, MD
Regional Winners
November 9-15, 2015**

TOP POINT WINNERS

District 6 Players

- 1 98.01 Sylvia Shi
- 2 83.04 William Pettis
- 3 81.75 William Cole
- 4 76.51 Sumner Steinfeldt
- 5 74.03 Brad Theurer
- 6 70.32 Alan Schwartz
70.32 Annie Schwartz
- 8 66.98 Fred King
- 9 65.13 Kenneth Davis
- 10 62.62 Lynn Jones
62.62 Paul Benedict

District 6 Players <3000 MPs

- 1 44.17 Adrienne Kuehneman
- 2 43.22 Mary Tenenbaum
- 3 39.59 Zachary Madden
- 4 39.21 John Becker
- 5 39.00 Wrus Kristiansen
- 6 38.34 Jeanne Land
- 7 37.92 Peter Harrington
37.92 Allan Sitterson
- 9 36.34 Maureen Brines
- 10 35.17 Alexander Salpeter

District 6 Players <750 MPs

- 1 35.17 Alexander Salpeter
- 2 32.28 Glenn Terrell
32.28 Dottie Terrell
- 4 30.31 Jack Smuck
- 5 25.38 Carolyn Riegle
- 6 22.42 Sharon Astarte
- 7 21.38 Susan Chambers
- 8 20.61 Don Schwikert
20.61 Pamela Schwikert
- 10 20.55 Suryun Yoo

District 6 Players <300 MPs

- 1 20.55 Suryun Yoo
- 2 19.24 Elizabeth Fletcher
- 3 15.09 Gordon Prager
- 4 15.07 Karen Crowley
15.07 James Crowley
- 6 14.26 Francesca Mazarella
- 7 13.50 Scott Lutrey
- 8 13.41 Lorraine Claggett
- 9 12.90 Barbara Gifford
- 10 12.57 Myron Goldstein

Can you Learn Bridge in a Day?® –Yes!

Know anyone who wants to learn to play the game you love?

Sunday, February 28 at the Williamsburg regional (see p.3) from 1 pm to 6 pm.

Cost: \$25 advance, \$30 at the door, includes materials & reception.

Registration: Karen Crowley, 678-371-6110, karen.thorne.crowley@gmail.com

Club Directors!

Leap into the New Year with Good Resolutions!

Interested in refreshing your skills to make YOUR club a great place to play? Plan now to resolve to be a more successful director in the coming year—understand how to respond to challenging rulings and how to handle difficult situations at the table! Doug Grove (in Williamsburg, February 28 and 29) and Dan Plato (in Gatlinburg, April 12 and 13) will be teaching a Club Director Update course. In D6, the course will be held right before the start of the 2016 Williamsburg Regional, in two three-hour sessions on Sunday evening and Monday morning. The material covered in each session is distinct – attendees should plan on participating in both sessions.

The course will start at 6:30 pm on Sunday, February 28 and continue at 9:00 am on Monday, February 29, and will be held in rooms 2 & 3 in the conference center on the lower level of the host hotel. Additional information will be available on the D6 website. This course must meet minimum attendance requirements in order to be financially viable. Please send an email to Margot Hennings at margot10bridge@cox.net to let us know of your interest in participating. To enroll, please send a check for \$25.00 made out to District 6 (clearly marked that it is for the “Williamsburg Club Director Update Course”) to D6 Treasurer Ron Spieker, 4845A 28th St. S, Arlington, VA 22206-1365. This course is being subsidized by D6 and by ACBL in order to make it available to you at a low cost.

JEFFERSON BRIDGE SECTIONAL

Great Hospitality and Prizes!



199er games may be run for all events and stratifications may be adjusted at the Director's discretion based on attendance.

...FRIDAY, MARCH 11

10:30 AM 199ER AND STRATIFIED OPEN PAIRS

3:30 PM 199ER AND STRATIFIED OPEN PAIRS

...SATURDAY, MARCH 12

10:30 AM 199ER AND STRATIFIED OPEN PAIRS

3:30 PM 199ER AND STRATIFIED OPEN PAIRS

...SUNDAY, MARCH 13

Lunch served during the break between sessions

10:30 AM & TBA BRACKETED SWISS TEAMS

8 teams per bracket, 7 rounds

Stratification of teams by average masterpoints. No individual may exceed the event's upper limit: A/X: 0-3000/3000+; B/C: 0-500/500-2000.

Host Hotel:

434-977-3300

COMFORT INN MONTICELLO

BRIDGE RATE: \$89.95 WHICH INCLUDES *free breakfast buffet* AND *free parking*. CONTACT NAN MASSIE FOR HOTEL ALTERNATIVES.



Directions: COMFORT INN IS LOCATED AT 2097 INN DRIVE. THIS IS LESS THAN 0.1 MILE EAST OF THE INTERSECTION OF ROUTE 250 EAST AND INTERSTATE 64 EXIT 124 AT SHADWELL. TURN NORTH ON NORTH HILL ROAD, TURN LEFT ON INN DRIVE. GO UP THE PAVED DRIVE TO THE COMFORT INN WHICH IS AT THE TOP OF THE HILL.

TOURNAMENT CHAIR

NAN MASSIE

.....

DIRECTOR

CATHY HILDEBRAND

.....

PARTNERSHIPS

NAN MASSIE

(434) 531-5547

(CHOBIDGE@AOL.COM)

.....

ENTRY FEES

\$3 additional per person per session for non or unpaid ACBL members

PAIR GAMES

\$10.00

SUNDAY SWISS GAME

\$96 for 4-member team, includes lunch

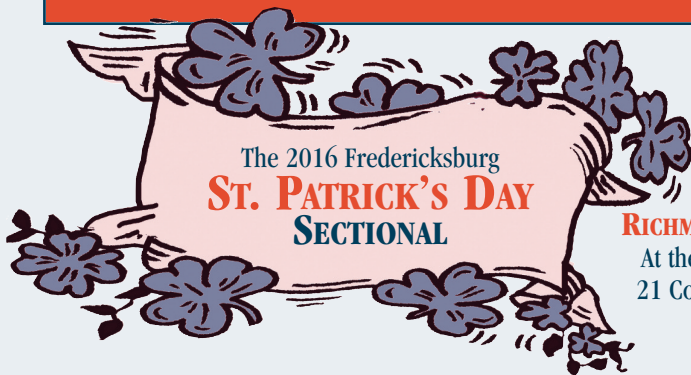
.....

STRATIFICATION FOR OPEN PAIR GAMES

A: 1250+

B: 500 (OR LM) -1250

C: 0-500 (NLM)



Sponsored by the
RICHMOND BRIDGE ASSOCIATION
At the Fraternal Order of Eagles,
21 Cool Springs Rd. (Route 607)
Fredericksburg, VA



FRIDAY, MARCH 18

Stratified Open Pairs10:00 am
Stratified Open Pairs3:00 pm
99er Pairs (*pending sufficient entries*)3:00 pm

SATURDAY, MARCH 19

Newcomer Pairs 0-30010:00 am
Stratified Open Pairs10:00 am
Bracketed Pairs/BAM Teams3:00 pm
A, B, and C play Sectional Pairs game. Simultaneously, Director pairs teams according to masterpoints (highest to lowest) giving all TWO chances to win!

SUNDAY, MARCH 20

Bracketed Swiss Teams10:00 am & TBA
8 teams in each bracket, 7 rounds, playthrough, lunch available

LOCATION

Fraternal Order of Eagles

21 Cool Springs Rd., Fredericksburg, VA (Route 607)

DIRECTIONS: Coming from the North: Take I95 South to Exit 133-A (Rt 17 Business/Falmouth). Coming from the South: Take I95 North to Exit 133, take turnoff to Falmouth. From the exit, continue to the 3rd light, at Rt 1 (approx. 2 miles). Be sure to be in the left lane and cross Rt 1 and continue approx 3 miles to 3rd light at Rt 607 (Cool Springs Rd). Turn right and Eagles is 1 block on left.

REFRESHMENTS
(every session)
Homemade Cookies
Coffee, Tea, Soft Drinks
Sunday: Doughnuts & Bagels and Box Lunch available between sessions

TOURNAMENT CHAIR
Deborah Hage
(540) 659-1321
debhage@hotmail.com

PARTNERSHIPS
Sheila Young
(540) 220-0868

Paul McGowan
(540) 785-3277

PAIR GAME STRATA
0-300, 300-1500, 1500+

ENTRY FEES
\$10 per player/session;
\$88 per team on Sunday;
\$3 additional per player/session for non or unpaid ACBL members

District Six Honor Roll:
Denver Fall NABC,
Nov 27 - Dec 6, 2015

TOP TEN LISTS

District Six Members

1	131.93	Steve Robinson
2	116.25	Sylvia Shi
3	84.02	Ai-Tai Lo
4	78.77	Beth Palmer
5	55.26	Mark Laken
6	54.65	William Cole
7	53.99	Ellen Cherniavsky
	53.99	Eugene Kales
9	53.73	Mark Dahl
10	53.66	Helene Bauman

District Six Members with 0-3000 MPs

1	40.98	Robert Brady
2	32.16	Jeremy Lewis
3	27.26	Marvin Raines
4	26.69	George Parkins
	26.69	M David Jackson
6	15.18	Marc Warner
7	15.10	William Lowry
8	14.05	Robert O Connor
9	13.69	William Belanich
	13.69	Nancy Golden

District Six Members with 0-750 MPs

1	32.16	Jeremy Lewis
2	15.10	William Lowry
3	14.05	Robert O Connor
4	7.98	Randal Burns
5	5.57	Patricia Stuehler
6	5.25	Kay Rogers
7	4.77	Robert Gray
8	4.76	Richard Wilson
9	4.58	John Adams
10	4.06	Anthony Hawks

**OVERALL PLACINGS
IN NABC AND NABC+ EVENTS**

*Special congratulations to our
1st place overall winners:*

**Steve Robinson
and
Sylvia Shi**

*in the
NABC+ Mixed Swiss Teams*

NAIL LIFE MASTER OPEN PRS

- 19 Ai-Tai Lo, Reston VA
29 Robert Brady, Mc Lean VA

0-10000 SWISS TEAMS

- 4 Brian Schoenfeld,
Virginia Beach VA

SUPER SENIOR PAIRS

- 16 Mark Laken, Glyndon MD

MITCHELL OPEN BAM TEAMS

- 30/32 Fred King, Mc Lean VA
42/43 Greg Humphreys, Charlottesville VA

**MARSHA MAY STERNBERG WOMEN'S
BAM TEAMS**

- 3 Beth Palmer, Chevy Chase MD

continued on pg. 10, column 3

♠ **Norfolk/Va. Beach, VA** ♣ **APRIL 1-3, 2016** ♦



**Norfolk/
Virginia Beach**
Spring Sectional

Unit 146 Bridge Center

4966 Euclid Road, Virginia Beach, VA 23462

—Stratification based on partnership/team average—

Directions: Take North Witchduck exit off I-264. After 4/10 mile, turn right onto Cleveland Street. After 3/10 mile, turn diagonally right on Euclid Road. The Bridge Center is at 4966 Euclid Road, 3/10 mile on the left, in the U-shaped Pocahontas Office Park.

Nearby Hotels: **Hampton Inn**, 5793 Greenwich Road, Virginia Beach, 757-490-9800 (\$79 bridge rate), **Motel 6**, 4760 Euclid Road, Virginia Beach, 757-499-1935

Fri & Sat PM games regionally rated—extra points, no extra money.

Friday, April 1

(Light lunch served between sessions)

Stratified Pairs (single sessions) 10:30 AM & 2:30 PM
(0-750, 750-1500, 1500+ MPs)

Novice Pairs (single sessions) . . 10:30 AM & 2:30 PM
(0-100, 100-200, 200-NLM up to 500)

Saturday, April 2

(Light lunch served between sessions)

Stratified Pairs (0-750, 750-1500, 1500+ MPs) 10:30 AM
Novice Pairs 10:30 AM
(0-100, 100-200, 200-NLM up to 500)

Bracketed Pairs/Board-A-Match Teams 2:30 PM

(Play in a stratified pairs game. At the same time, each pair is teamed according to MP (highest to lowest). *Two chances to win!*)

Sunday, April 3

Stratified Swiss Teams (0-750, 750-1500, 1500+ MPs) 10:30 AM & TBA
Novice Stratified Swiss Teams (0-100, 100-200, 200-NLM up to 500) . . 10:30 AM & TBA

Entries: \$10 per person per pairs session; \$84 per team (includes meal between sessions for 4 team members). Additional \$3 for unpaid or non-ACBL members.

Great Hospitality: Includes free snacks, sodas and coffee for all events.

— Strata may be adjusted at director's discretion based on attendance—

**Tournament
Co-Chairs**

Gail Cervarich
gailcervarich@gmail.com
757-399-1011

Cindy Booth
cboo62@yahoo.com
757-777-7668

Partnership Chair

Sid Cervarich
zwags@cox.net
757-237-2628



38th Annual LYNCHBURG SPRING SECTIONAL

~Great Location!~

at the **FOREST RECREATION CENTER**
1088 RUSTIC VILLAGE RD, FOREST, VA 24551

~Great Snacks and Hospitality!~

FRIDAY, APRIL 1 (single session events)

Stratified Pairs (0-500, 500-2000, 2000+)* 10:00 A.M. / 2:00 P.M.

SATURDAY, APRIL 2 (single session events)

Unit 139 Board Meeting . . . 1:00 P.M.

Stratified Pairs (0-500, 500-2000, 2000+)* 10:00 A.M. / 2:00 P.M.

SUNDAY, APRIL 3

Stratified Swiss Teams (0-500, 500-2000, 2000+)* 10:00 A.M. & TBA

**Strata may be modified based on attendance*

Entry Fees – \$10/person/session, Sunday Team Game \$96/team

Plenty of homemade food and catered lunch on Sunday!!!

\$3 additional/person for non/unpaid ACBL members

Tournament Chair – **Anne Barlow** (434) 237-8143, abarlow503@gmail.com

Partnership Chair – **Jo Ann Stover** (434) 616-6966, smlstover@aol.com

Tournament Hotel

La Quinta Inn & Suites

3320 Candler's Mtn Road
Lynchburg, VA 24502

434-847-8655

Bridge Rate: \$89 plus tax
incl. full breakfast buffet

Directions to Rec Center: From US-29B South or North merge onto or take Rt. 501 North (Lynchburg Expressway). Follow 3.1 miles, turn left on Forest Rd. US-221. Go 4.6 miles. Turn left at light onto Thomas Jefferson Rd. (Rt. 811). Take 1st left onto Rustic Village Rd. From Roanoke take US-460 East toward Lynchburg. Turn left on Thomas Jefferson Rd. Go 5 miles, turn right on Rustic Village Rd.

NABC & NABC+ Overalls, cont. from p 9

0-10000 IMP PAIRS

10 Jay Kelkar, Oak Hill VA

KAPLAN BLUE RIBBON PAIRS

12 Ai-Tai Lo, Reston VA

42 Richard Wegman, Bethesda MD

53 Mark Dahl, Richmond VA

56 Robert Brady, Mc Lean VA

75 William Cole, Silver Spring MD;
Beth Palmer, Chevy Chase MD

SENIOR MIXED PAIRS

27 Fred King, Mc Lean VA

28 Ellen Cherniavsky, Silver Spring
MD; Eugene Kales, Arlington VA

BAZE SENIOR KO TEAMS

5/8 Steve Robinson, Arlington VA;
Peter Boyd, Darnestown MD

5/8 Mark Dahl, Richmond VA

NABC+ MIXED SWISS TEAMS

1 Steve Robinson, Arlington VA;
Sylvia Shi, Rockville MD

5 Ellen Cherniavsky - William Cole -
William Pettis, Silver Spring MD;
Beth Palmer, Chevy Chase MD;
Eugene Kales, Arlington VA

9 Helene Bauman, Arlington VA;
Mickie Kivel, Potomac Falls VA

21 Linda Marshall, Bethesda MD;
Steven Schatzow, Washington DC

Denver Delights

—REPORT FROM DISTRICT
DIRECTOR MARGOT HENNINGS,

Margot10bridge@cox.net

After a somewhat cautionary beginning with snow and ice in the forecast and materializing to some extent over the first few days of the tournament, the recent NABC in Denver was well-organized and reasonably well attended, although it did miss its mark of an estimated 10,000 tables. The snow of the first days discouraged some folks from making it there, despite the fact that few cities in North America handle snow as well as Denver does—and that comment was made by many Bostonians and other New Englanders!

The playing site was one of the best in recent memory, with ample space and light, lots of accessible bathrooms, a free shuttle for 20 blocks up and down the main street right outside the Sheraton, lots of hot restaurants, and unfortunately—as one of the only downsides—lots of heat in the playing areas for most events. ACBL Live worked better than ever with rapid updates as soon as scores were sent in by directors, and access to regional KO results and half-time national event Swiss and KO leaderboards, too. Hospitality was plentiful and centrally located, and the registration and prize desks were open frequently to accommodate players in mid-morning and afternoon events as well as at the more traditional 1:00 and 7:30 start times.

The cards were not as kind to the District 6 (D6) players who traveled so far to play as they have been in recent NABC events, but we were not without some notable successes:

Congratulations to.....

Steve Robinson and Sylvia Shi, the only D6 players to snag a win in a national event, came in first in the second weekend's NABC Mixed Swiss. This event also saw placements by Ellen Cherniavsky, Bill Cole, Beth Palmer, Bill Pettis, and Gene Kales, who came in 5th Overall in the Mixed Swiss; and by Mickie Kivel and Helene Bauman, who came in 9th Overall. Other Top Twenty finishes in national events include Beth Palmer, 3rd in the Women's

continued on pg. 12, column 3

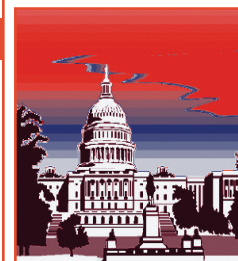
♣ Silver Spring, MD ♦ APRIL 7-10, 2016 ♥

69th Annual

ALERT! Schweinhaut Center Friday - Sunday ALERT!

CITY OF ~ WASHINGTON TOURNAMENT ~

at the **MARGARET SCHWEINHAUT SENIOR CENTER**
1000 Forest Glen Rd, Silver Spring, MD **Friday-Sunday only**



THURSDAY, APRIL 7

- ♣ StrataFlighted Open (unlim/2000) or 1000/500/300 Pairs11:15am
Rockville Duplicate Bridge Club, 301-503-3348 (Mark Lavine) **NO ENTRY TILL 11AM**
St. James Episcopal Church, 11815 Seven Locks Rd., Rockville
- ♦ StrataFlighted Open Pairs (A/X unlim/3000, B/C/D Separate 2000/1000/500) (both sites); Stratified NLM Pairs (NLM/100/50) & 0-20 Pairs (Ohr Kodesh only); Stratified 199er Swiss Teams (Beth El only)
Beth El Congregation, 3830 Seminary Rd, Alexandria7:00pm
Ohr Kodesh Congregation, 8300 Meadowbrook Ln., Chevy Chase 7:30pm
I-495 to Connecticut Ave. S. 4th light left E-W Hwy 410. Left Meadowbrook Ln. 1st left Freyman Dr. Parking lot on left. No outside food allowed.

FRIDAY, APRIL 8

- ♣ *StrataFlighted A/X (unlim/3000) or B/C/D Pairs (2000/1000/500) (single sessions) 10:00am, 2:00pm
- ♦ **Stratified Triple Nickel Swiss Teams** (unlim/2000/750) ... **Post-Game Party!** ... 7:15pm
with beer, wine & desserts
- ♠ Intermediate/Novice Pairs (300/200/100/50/20) (single sessions)10:00am, 2:00pm, 7:15pm

SATURDAY, APRIL 9

- Win upgraded (more) masterpoints today! \$1 additional fee supports Grass Roots events.**
- ♣ *StrataFlighted A/X (unlim/3000) or B/C/D Pairs (2000/1000/500) (single sessions) ..10:00am, 3:00pm
 - ♦ Intermediate/Novice Pairs (300/200/100) or Newcomer Pairs (50/20/5) (single sessions) 10:00am, 3:00pm

SUNDAY, APRIL 10

- Lunch available for purchase.** A/X Swiss & B Teams: 2 session playthroughs w/break
- ♣ Flights A/X (unlim/5000) Swiss Teams11:00am & TBA
 - ♦ Bracketed Flight B Teams (no single player >3000)11:00am & TBA
B Teams Bracketed by total team masterpoints; three overall places in each.
 - ♥ 300/100/50 Swiss Teams, VPs (single sessions)11:00am, 3:00pm
- ♣ **Lots of Intermediate & Novice Events with Silver Points!** ♥
Separate I/N events & strata as advertised as attendance allows. (Director's discretion.)

Hospitality includes snacks, drinks, & **Friday lunch & evening party.** Sunday lunch available for purchase.
Chair: Steve Schatzow, 202-332-3729, sschatzow@his.com. **Volunteer Coordinator: Barbara Summers**, 301-598-5838, jimbarb1184@aol.com; **Hospitality Chair: Mike Zane**, 301-653-1215, Mikezane@msn.com;
Partnerships: Barbara Doran, 301-608-0347, barb.doran@verizon.net, **Online Partnership Desk** available.
**StrataFlighted if attendance warrants—otherwise combined into Stratified Pairs (unlim/2000/500) Stratification by avg. masterpoints of the team or pair. No individual may exceed the event's upper limit.*

Directions to the Margaret Schweinhaut Senior Center, 1000 Forest Glen Rd, Silver Spring, MD: I-495 to Georgia Avenue North (toward Wheaton). 1st light right on Forest Glen Rd. The Center is .7 mile on right.

WASHINGTONBRIDGELEAGUE.ORG

Mid-chart allowed in all events except I/N



NORTHERN VIRGINIA BRIDGE ASSOCIATION
PRING SECTIONAL TOURNAMENT

The Arlington/Fairfax Elks Lodge #2188
8421 Arlington Boulevard, Fairfax, VA; 703-560-2188

THURSDAY, MAY 12

STRATIFIED OPEN PAIRS (2000+/2000/750) or 500/300/100 PAIRS10:30 a.m.

Norma's Game: K of C Hall, 5115 Little Falls Rd., Arlington, VA, 703-892-1292

Evening games at: NVBA: Beth El Hebrew Congregation, 3830 Seminary Road, Alexandria, VA and

WBL: Ohr Kodesh Congregation, 8300 Meadowbrook Ln, Chevy Chase, MD **NVBA (Beth El) WBL**

Intermediate/Newcomer Lecture6:30 p.m.

STRATAFLIGHTED OPEN PAIRS (A/X=3000+/3000; B/C=2000/750)7:00 p.m. 7:30 p.m.

NVBA 199ER SWISS TEAMS (200/100/50/20); WBL NLM PAIRS (NLM/100/50) 7:00 p.m. 7:30 p.m.

FRIDAY, MAY 13

Gene's Friday Morning Game at KOCH:9:30 a.m.

STRATIFIED OPEN (2000+/2000/750) or 500/300/100 PAIRS (NLMs only)

...REST OF TOURNAMENT AT ELKS LODGE...

Intermediate/Newcomer Lecture1:15 p.m.

STRATAFLIGHTED A/X (3000+/3000) or B/C (2000/750) PAIRS 2 p.m.

I/N (500/300/100) or 49ER (50/20/5) PAIRS2 p.m.

TRIPLE NICKEL SWISS—5 rounds, 5 boards, 5 minutes a board .7:30 p.m.

I/N (500/300/100) PAIRS7:30 p.m.

**Join the FUNd!* \$1 extra/game Sat. & Sun., plus player auction on Sat. means extra fun at this Summer's DC NABC!*

SATURDAY, MAY 14

STRATAFLIGHTED A/X (3000+/3000) or B/C (2000/750) PAIRS 9:30 a.m.

I/N (500/300/100), 49ER (50/20) or NEWCOMER (0-5) PAIRS .9:30 a.m.

Intermediate/Newcomer Lecture1:15 p.m.

BRACKETED COMPACT KO—All brackets are handicapped 2 & 7:30 p.m.

4 12-board matches start Sat aft—end Sat eve. All teams play 1st 2 matches.

STRATAFLIGHTED A/X (3000+/3000) or B/C (2000/750) PAIRS .2 p.m.

I/N (500/300/100) or 49ER (50/20/5) PAIRS2 p.m.

STRATIFIED OPEN (2000+/2000/750) or I/N (500/300/100) PAIRS 7:30 p.m.

SUNDAY, MAY 15

FLIGHTS A/X (5000+/5000) SWISS TEAMS11 a.m. & TBA

BRACKETED FLIGHT B TEAMS (no single player >2500) .11 a.m. & TBA

B Teams Bracketed by Total Team Masterpoints: three overall places in each.

A/X Swiss & B Teams: 2-session events, a brief break & food available on-site.

I/N (500/300/100) SWISS TEAMS (Single sessions) .11 a.m. / 3:15 p.m.

49ER (50/20/5) SWISS TEAMS (Single session)11 a.m.

STRATIFICATION of events is based on average masterpoints of the team or pair. In any event or flight with an upper limit, no individual's total Masterpoint holding may exceed that upper limit.

DIRECTIONS: From Route 50/Arlington Boulevard heading west from DC and Arlington AND from Route 495/Beltway: Continue on/Take Route 50 West about one mile outside the Beltway, and turn left at Javier Road (the second stoplight after the intersection of 50 and 495). Take an immediate right onto the access road that runs parallel to Route 50. The Elks Lodge will be two buildings down on your left—parking on the side and in the rear. **From Fairfax, heading East on Route 50:** Pass the intersection of Route 50 and Prosperity Avenue—the Prosperity Medical Center will be on your right. Between the first and second lights after Prosperity, turn right into the access road that runs parallel to Route 50 and look for the Elks Lodge immediately to your right—parking on the far side of the building and in the rear.

Plenty of free parking! On-site snack bar plus lots of free treats! Many great restaurants nearby!

Championship Events and a Full Schedule of 299er Events for Novice and Intermediate Players!
Players with 0-5 Masterpoints play FREE in ALL games!

Tournament Chair

Margot Hennings,
703-560-0245

Partnership Chair

Marty Bley
nvbapartnerships@gmail.com
571.789.8338 (C)

Mid-Chart Conventions permitted in all A/X Events

Next NVBA Sectional Sep 8-11 at Arlington/Fairfax Elks Lodge (Thurs at Beth El)

www.nvba.org

Board-a-Match Teams; Brian Schoenfeld, 4th in the 10K Swiss; Steve Robinson and Peter Boyd, 5th/8th in the Senior KOs; Jay Kelkar, 10th in the 10K IMP Pairs; and Ai-Tai Lo, 19th in the Nail Open Pairs.

Regional wins were scored by: Mark Laken in the first Saturday Daylight Open Pairs; Jim Wakefield, Helene Bauman, and Mickie Kivel in the first Saturday Compact KO Bracket 1; Robert O'Connor in the first Sunday Daylight Gold Rush Pairs, and again with William Lowry in the Mon/Tues KO Bracket 4; Barry and Winnie Fratkin, Nancy Golden, and William Belanich in the Wed/Thurs AM Compact KO Bracket 2; Greg Humphreys, in the Wed/Thurs KO Bracket 2; Marshall Kushner in the Thurs/Fri Side Game Series; and Monique Smith and Merrill Hirsh in the second Sat/Sun KO Bracket 2.

Elections and Appointments

Congratulations go to Ken Monzingo of District 22 (San Diego), who was elected ACBL President for 2016. In addition to being on the ACBL Board of Directors (BOD), Ken is the editor of the Western Conference district newspapers. On the BOD, Ken has been very involved over the past couple of years helping to re-think the NABC schedules and has chaired the Conditions of Contest Committee. Paul Janicki and Al Levy were re-elected as two of the five ACBL representatives to the World Bridge Federation (WBF) serving three-year terms.

Three significant appointments were also announced in Denver. I was delighted to hear that Patty Tucker, from our sister district, D7, and creator of the very successful Learn Bridge in a Day (LBIAD) Program (taught by Patty at the recent Reston Regional and another to be held in Williamsburg at the regional there on Sunday, February 28), as well as many junior programs, was appointed the ACBL Honorary Member of the Year. Debbie Rosenberg of D21 (northern CA) was appointed as the Nadine Wood Volunteer of the Year for her ongoing work with juniors, and Flora Pettit of D16 (Texas/Mexico) was appointed the Aileen Osofsky Goodwill Member of the Year.

Looking Forward: Financial and Operational Considerations

Challenges: The Board faces ongoing challenges from outdated technology (particularly infrastructure), retiring directors and the resultant recruitment and training of new directing staff, and the need to continue to address the integrity of our game. As I have stated in previous reports, there is an urgent need to bring our technology infrastructure and our IT performance to an acceptable level after decades of neglect, requiring both equipment and personnel. Tournament Director University (TDU) is entering its second year of two-tiered training for newer directors to gain the skills and confidence needed to direct small sectionals and more experienced directors to gain advanced skills needed to run regionals. Finally, the ACBL's ability and willingness to deal with the high-profile cheating issues have been shown with the appointment of a blue ribbon Bridge Integrity Task Force to identify the steps needed to create a fair playing environment where ethical violations are not tolerated. In support of this commitment, a dozen new cameras and stands have been purchased for use in videotaping later rounds of NABC+ team games and many are in use throughout the playing areas during NABC

DISTRICT 6 STAC

(Sectional Tournament at Clubs)

May 2-8, 2016

- ♣ Win sectionally rated silver points at your favorite local clubs.
- ♣ Huge overall masterpoint awards ; the more tables in play during any one session, the greater the awards.
- ♣ Clubs in MD, VA, and DE participate. Call any club for details, including entry fees and partnership arrangements.
- ♣ District 6 STAC Coordinator:
Don Berman
don.berman@verizon.net

♣ **Cambridge, MD** ♦ **MAY 19-21, 2016** ♥



Blue Crab Sectional
AMERICAN LEGION HALL
601 Radiance Dr. and US 50

THURSDAY MAY 19 (single sessions)

Stratified Pairs: 0-750/750-2000/2000+.....10:00 AM & 3:00 PM

I/N Stratified Pairs: 0-50/50-100/100-300.....10:00 AM & 3:00 PM

FRIDAY MAY 20 (single sessions)

Stratified Pairs: 0-750/750-2000/2000+.....10:00 AM & 3:00 PM

I/N Stratified Pairs: 0-50/50-100/100-300.....10:00 AM & 3:00 PM

SATURDAY MAY 21 (Play-through – single-session teams accommodated)

Swiss Teams: 0-750/750-2000/2000+.....10:00 AM / TBA

I/N Swiss Teams: 0-50/50-100/100-300.....10:00 AM / TBA

Eastern Shore Hospitality

*Morning coffee and tea; Afternoon cookies; Light lunch between all sessions
Thu and Fri bridge lecture between sessions*

Co-Chairs:

ALBANUS PHILLIPS

443-521-1509

albanus_phillips@yahoo.com

PHIL FELDMAN

410-463-0982

pfeldman@sequareu.com

Partnerships:

WENDY RICHARDSON

410-463-6436

Hallie2@yahoo.com

Directions to Playing Site: **From north:** follow US 50 east across the Choptank River bridge. Make a u-turn (left) at the first light (Maryland Av.). The Legion Hall is on the right, before the bridge. **From south:** drive on US 50 west until the Choptank River bridge. The Legion is the last building before the bridge.

COMFORT INN & SUITES 410-901-0926

Special Bridge Rate - \$89, breakfast included

HYATT CHESAPEAKE BAY RESORT 410-228-2503

Special Bridge Rate



Choptank River Lighthouse

Williamsburg Spring Sectional

DOUBLETREE BY HILTON

50 Kingsmill Road • 757-220-2500



Friday, May 20

Stratified Pairs10:30 am & 3:00 pm
(0-300, 300-1250, 1250+ MPs—Average points) (*single sessions*)
Newcomer/99er Pairs (*single sessions*) (*if attendance warrants*) 10:30 am & 3:00 pm

Saturday, May 21

Stratified Pairs (0-300, 300-1250, 1250+ MPs —Average points)10:30 am
Newcomer/99er Pairs (*if attendance warrants*)10:30 am
Bracketed Pairs/Board-A-Match Teams—*Two chances to win!*3:00 pm
(0-300, 300-1250, 1250+ MPs—Average points) A, B, C played in stratified pairs game. At the same time, each pair is teamed according to masterpoints for a BAM.

Sunday, May 22—Including lunch!

Bracketed Swiss Teams (by average points) (*7 rounds of 7 boards*)10:00 am

Entry Fees: \$10 per person per session; \$88 (*includes lunch*) per Swiss Team
\$3 additional/person/session for non or unpaid ACBL members

Tournament Chair

Jane Farthing: jane.farthing@gmail.com, 703-850-9635

Partnership Chair

Ron Alldaffer: ralldaffer@charter.net, 757-279-0230

Williamsburg Hospitality!

Directions: I-64 to Rte. 199, exit 242A (Busch Gardens). Turn right onto Rt. 60 East, turn right into Kingsmill on the James, the DoubleTree is on the right.

pair events. Videos of all taped matches are now available on YouTube.

Finances: A much needed IT backbone, the addition of critical new personnel, director training, and a commitment to aggressively address cheating do not come without significant costs. At the fall meetings, both the next year's operating and capital budgets are presented, with final approval by the BOD at the spring meetings. For 2016, the operating budget currently shows an excess of expenses over revenue of \$61,534, and the capital budget is estimated at \$399,000. Management and the Finance committee together took an original projection of over a \$1M loss and worked very hard to get it down to the \$61+K figure. In order to gain this reduction, a number of fee increases were unavoidable—a short summary follows, all effective April 1, 2016, except as noted: All regional and sectional fees are increased by approximately 2%; STaC fees are increased by approximately 3%; the open sectional surcharge is increased by approximately 9%; and, TD session fees are increased by approximately 9% (varying percentages depending on the TD levels assigned). The \$1.25 club game fee was rescinded and the club per-table fee is increased by approximately 11%; and the short game (12-17 boards) per-table fee is increased by approximately 6%. STaCs and all unit and special games held at clubs will now be subject to the per-table fee. The NABC team screen table surcharge (passed selectively in Las Vegas in the summer of 2015 for NABC+ events only) was rescinded and NABC+ entry fees will increase by 15%, effective at the Summer 2016 NABC. In addition, at events held at NABCs, entry fees for team events of two sessions or more will be charged on a per person rather than a per-team basis. Although somewhat controversial, this final motion passed with 4/5 support of the BOD, and makes sense when you consider that registration gifts, prizes, hospitality/food, and masterpoints are all given away on a per person basis. Although this same policy is not mandated for events at sectionals and regionals, most on the BOD felt strongly that

SHENANDOAH VALLEY SECTIONAL

WARREN COUNTY PARKS & RECREATION

200 East 8th Street, Front Royal, VA 22630

DIRECTIONS: From Rt 66 to exit 6. follow Shenandoah Ave South over the two bridges (Shenandoah river north fork and south fork). Left on 14th St. Go through an S curve onto Commerce Ave. Go through another S curve and 8th St is the first street you come to with the Parks & Rec building immediately on your left.



a consistent policy of charging for teams on a per-member basis should be encouraged in every district.

Operations: As the 2016 President, Ken has been instructed to form a Board Composition Advisory Committee consisting of members of the BOD, the Board of Governors (BOG), Management, and at-large members to review the current size of the BOD, areas from which they are elected, how they are elected (based on geographical district versus size—the Senate model versus the Congressional model), and whether the current size of the BOD is optimal to retain appropriate representation of the diverse needs of members who reside in cities, in towns, and in very sparsely populated areas. The Committee will present a final report no later than the Spring NABC 2017 Board Meeting.

Other BOD Actions and New Programs of Interest

- The 0-1500 LM Pairs (held in the summer) will now simply be called the 0-1500 Pairs so that all players with fewer than 1500 masterpoints, whether they are LMs or not, may participate in this event. The impetus for this action was to allow Flight C GNT folks who are knocked out of the national event, held prior to the start and during the first days of the Summer NABC, to participate.
- A Ranking Committee surveyed segments of the membership over the past months to find out how they felt about the current Life Master ranks, and based on the analysis of the survey results, the BOD approved two new ranks recommended by this committee—Ruby for those players who achieve 1500 MPs and have at least 300 silver/red/gold platinum points, and Sapphire for those players who achieve 3500 MPs and have at least 350 gold/platinum points and 700 silver/red/gold/platinum points. In addition, Bronze LM masterpoint requirements are raised from 500 to 750 for those who joined ACBL after January 1, 2010.
- In a further move to tighten the noose on

FRIDAY, MAY 20

11:00AM and 4:30 PM

Stratified Open Pairs (*single sessions*)
(Unlim/1000/300)

299er Pairs (*single sessions*)
(if enough pairs available)

SATURDAY, MAY 21

10:30AM and 3:30 PM

Stratified Open Pairs (*single sessions*)
(Unlim/2000/750)

299er Pairs (*single sessions*)
(if enough pairs available)

SUNDAY, MAY 22

10:30 AM Stratified Swiss Teams
(By Team Average: Unlim/1250/500)

Strata may be adjusted at director's discretion based on attendance.

TOURNAMENT HOTEL:

Holiday Inn Front Royal
111 Hospitality Drive, Front Royal, VA 22630 • (540) 631-3050 • hifrontroyalva.com
Located 2 miles north of I-66 at exit 6 at approximately 7900 Rt. 522.

TOURNAMENT CHAIR:

Gerry O'Malley
gerrysdeals@gmail.com
(540) 550-4410

PARTNERSHIP CHAIR:

Dagmar Loose
tdloose@aol.com

HOSPITALITY: Coffee, soda, water, snacks available all sessions. Box lunch available Sunday: \$7.50.

Southwest Virginia ♦ Unit 231 ♦ Sectional

*Cash prizes ♦ Lunch provided each day
Snacks, coffee, soft drinks during all sessions*

❖ Schedule ❖

Friday, June 3

- ❖ Stratified Pairs10 am & 2 pm
(0-300, 300-1250, 1250+ MPs)
(single sessions)
- ❖ 99er Pairs.....10 am & 2 pm
(single sessions) (if attendance warrants)

Saturday, June 4

- ❖ Stratified Pairs (single session)10 am
(0-300, 300-1250, 1250+ MPs)
- ❖ Bracketed Pairs/Board-A-Match Teams2 pm
(Play in a stratified pairs game. At the same time, each pair is teamed according to MP, highest with lowest, etc. *Two chances to win!*)

Sunday, June 5

- ❖ Stratified Swiss Teams ...10 am & TBA

Directions to the Blacksburg Recreation Center

- ❖ **From I-81:** Take exit 118 B & follow signs to Blacksburg, which puts you on US route 460 W. After the light at Southgate Dr. (entrance to VT's athletic compound), go 2.5 miles further & take Tom's Creek Rd. exit. Turn right onto Tom's Creek Rd. At the first light turn left onto Patrick Henry Dr. Continue 1.1 miles to Blacksburg Recreation Center on the right.
- ❖ **From points west:** Take US route 460 E to Tom's Creek Rd. exit & turn left on Tom's Creek Rd. Continue as above.

BLACKSBURG RECREATION CENTER

725 Patrick Henry Dr.,
Blacksburg, VA 24060

Tournament Coordinator

Rich Rio, 540-553-6228
richrio428@yahoo.com

Partnership Chair

Susan Bricken
540-998-9751
sbricken@yahoo.com

Entry Fees

\$10 per person, per session. \$96 per Swiss Team. (\$3.00 additional per person per session for non or unpaid ACBL members.)

players who may be tempted to cheat or to partner with those who do, the ACBL Code of Disciplinary Regulations was amended to provide that partners and teammates of convicted cheaters also lose all masterpoints, titles and status ranks earned while playing with them for the prior four years.

- Since its enactment several years ago, the non-member surcharge at sectionals and regionals has been retained by the sponsor (the unit or district). Passed at the Denver meeting is the requirement that this fee now be remitted to the ACBL since it is at HQ that the costs of processing non-members are borne.
- Beginning in 2016, email marketing tools empowered by Pianola will be available directly to units and districts. This toolset will remove ACBL from being the "middle man" to its members and allow easy access to the ACBL database to customize messages to targeted groups—Non-LMs, lapsed members. The ACBL Marketing Department will be contacting Unit Presidents in January to set up an account—if a Unit needs more than one account, please contact marketing@acbl.org for assistance.

ACBL to Support Local Charities — Nominate your Charity for a Contribution

During the North American Bridge Championships here in Washington, DC this July, the ACBL will make a contribution to local Washington area charities, as determined by the sponsoring units. If you are active in a local charity or support a local charity that could use up to \$5,000 from ACBL, please contact Charity Chair Joan Lewis (joanlewis@aha.org) to get a copy of the one-page application form. The NABC Charity Committee will meet in the spring to select the charity/charities to receive all or part of the \$5,000. Charities selected MUST be 501c(3) organizations, as determined by the IRS.

**Congratulations to
Last Year's New Life
Masters from District 6!**

October 2014

Jill Benson, Bethesda MD
Joan Burgess, Colonial Heights, VA
Gail Ginsburgh, Bethesda, MD
Judith Passerini, Harbinger, NC
Jo Prager, Pasadena, MD
Paul Rich, Chester, VA

November 2014

Wendy Branoff, Baltimore, MD
Michael Canes, McLean, VA
Chieko Franck, Centreville, VA
Douglas Grove, Silver Spring, MD
Barbara Kolodkin, Baltimore, MD
James Wade, Arlington, VA

December 2014

Katherine Cook, Jarrettsville, MD
Elizabeth Edwards, Charlottesville, MD
Terry Fridley, Lexington, VA
Ken Greene, Virginia Beach, VA
Jean Kiker, Charlottesville, VA
Suzanne King, Lexington, VA
Jim Maas, Moneta, VA
Michael Nee, Moneta, VA
Mitchell Riley, Rockville, VA
Alexander Robertson, Nellysford, VA
Marguerite Robertson, Nellysford, VA
Leo Rogers, Williamsburg, VA
Carol Taylor, Williamsburg, VA
Marc Warner, Crozier, VA

January 2015

Gary Grossman, North Bethesda, MD
Ray Jakobovits, Williamsburg, VA
Sylvia Kaldor, Grasonville, MD
Ellen Kelley, Washington, DC
Joy Oliver, Damascus, MD

continued on pg. 18, column 3

♠ Norfolk/Va. Beach, VA ♣ JUNE 3-5, 2016 ♦



**Norfolk/
Virginia Beach
Summer Sectional**

Unit 146 Bridge Center

4966 Euclid Road, Virginia Beach, VA 23462

—Stratification based on partnership/team average—

Directions: Take North Witchduck exit off I-264. After 4/10 mile, turn right onto Cleveland Street. After 3/10 mile, turn diagonally right on Euclid Road. The Bridge Center is at 4966 Euclid Road, 3/10 mile on the left, in the U-shaped Pocahontas Office Park.

Nearby Hotels: Hampton Inn, 5793 Greenwich Road, Virginia Beach, 757-490-9800 (\$79 bridge rate), Motel 6, 4760 Euclid Road, Virginia Beach, 757-499-1935

Fri & Sat PM games regionally rated—extra points, no extra money.

Friday, June 3

(Light lunch served between sessions)

Stratified Pairs (single sessions)10:30 AM & 2:30 PM
(0-750, 750-1500, 1500+ MPs)
Novice Pairs (single sessions) . .10:30 AM & 2:30 PM
(0-100, 100-200, 200-NLM up to 500)

Saturday, June 4

(Light lunch served between sessions)

Stratified Pairs (0-750, 750-1500, 1500+ MPs) 10:30 AM
Novice Pairs10:30 AM
(0-100, 100-200, 200-NLM up to 500)
Bracketed Pairs/Board-A-Match Teams2:30 PM
(Play in a stratified pairs game. At the same time, each pair is teamed according to MP (highest to lowest). *Two chances to win!*)

Sunday, June 5

Stratified Swiss Teams (0-750, 750-1500, 1500+ MPs)10:30 AM & TBA
Novice Stratified Swiss Teams (0-100, 100-200, 200-NLM up to 500) . .10:30 AM & TBA

Entries: \$10 per person per pairs session; \$84 per team (includes meal between sessions for 4 team members). Additional \$3 for unpaid or non-ACBL members.

Great Hospitality: Includes free snacks, sodas and coffee for all events.

— Strata may be adjusted at director's discretion based on attendance—

**Tournament
Co-Chairs**

Bill Mannschreck

wmannschre@aol.com
757-340-0885, 757-647-1545(m)

Judy Mannschreck

tenisjudy@aol.com
757-340-0885, 757-803-3421(m)

Partnership Chair

**Bill
Mannschreck**



Non Life Master Sectional

NEWPORT MILL MIDDLE SCHOOL

11311 Newport Mill Road, Kensington, MD 20895

Maryland Hospitality

Lunch & refreshments included!

Play for Silver!

NLMs with fewer than 500 MPs

Saturday, June 4

Free ½ hour lesson before each game today, by Leslie Shafer, ACBL Columnist!

NLM StrataFlighted Pairs (500/200/100 and separate 50/20/10) . . . 10:30 am

NLM StrataFlighted Pairs (500/200/100 and separate 50/20/10) . . . 2:30 pm

Sunday, June 5 *(All day playthrough with lunch break)*

Stratified Swiss Teams (500/200/100) . . . 10:30 am

—All events are stratified by average masterpoints, but no individual's masterpoint total may exceed the event's upper limit. Strata may be adjusted according to attendance.—

TOURNAMENT CHAIRS:

Leslie Shafer & Julie Marquette, 301-642-9197, jmarq3428@yahoo.com

PARTNERSHIPS: **Judy Retchin**, jeretchin@aol.com

DIRECTIONS to Newport Mill Middle School: Take the Beltway (I-495) to the Georgia Ave exit (Exit 31A, MD 97) North (towards Wheaton). Go 1.6 miles then bear left onto Viers Mill Rd. Go 1.0 miles then turn left onto Newport Mill Rd. Go 1/4 mile to school on left.

Congratulations, New LMs! cont. from p 17

February 2015

Anne Atwood, Richmond, VA
Arlene Bearman, Pikesville, MD
Joy Brown, Leesburg, VA
George Caley, Winchester, VA
Thelma Cameron, Winchester, VA
Shirley Crockett, Irvington, VA
James Edwards III, Virginia Beach, VA
Donald Freedman, McLean, VA
Teresa Hall, Radford, VA
Nancy Jester, Williamsburg, VA
Nicolas Karamaoun, Blacksburg, VA
Speed Larsen, Charlottesville, VA
Cathy McGarrigan, Fort Washington, MD
Thomas Newlund, Radford, VA
Mary Peyton, Keswick, VA
Bryan Selz, Chesterfield, VA
Darlene Selz, Chesterfield, VA
Cheryl Solomon, Roanoke, VA
Ronald Vande Bunte, Fredericksburg, VA
Charles Williams, Cockeysville, MD

March 2015

Robert Gemmer, Odenton, MD
Alice Layman, Charlottesville, VA
Roberta Shaker, Annapolis, MD
Henry Wilson, Bel Air, MD

April 2015

Dean Baird, Fairfax Station, VA
Duchesne Clark, Centreville, MD
Shirley Clark, Centreville, MD
Margaret Cooke, Washington, DC
Peter Isard, Washington, DC
Murray Jacobson, Baltimore, MD
Frederick Kovner, Virginia Beach, VA
Karen Kreutzberg, Blacksburg, VA
Jack Mallery, Virginia Beach, VA
Neil Sandson, Timonium, MD

May 2015

Cary Baber, Roanoke, VA
Brenda Dunaway, Chevy Chase, MD
Debra Gardner, Richmond, VA
Susan Hooper, Boynton Beach, FL
Richard Shaker, Annapolis MD

June 2015

Martha Barnard, Saluda, VA
Frants Becker, Aldie, VA

Patricia Benevento, Charlottesville, VA
Brian Brunsvold, Falls Church, VA
Robert Deffinbaugh, Lusby, MD
Robert Lumbert, Severn MD
Jack Mortick, Silver Spring, MD
James Rucker, Richmond, VA
Donald Smith, Woodbridge, VA
Laura Soles, Richmond, VA
Rosalie Zaia, Annapolis, MD
Kathleen Zellmer, Bethesda, MD

July 2015 - None

August 2015

David Amey, Falls Church, VA
Marge Amey, Falls Church, VA
Elliott Dworin, Nellysford, VA
Maggie Eckman, Palmyra, VA
Thomas Grahame, Washington, DC
Marlene Gross, McLean, VA
Donna Hickling, Falls Church, VA
Leslie Jessell, Kensington, MD
Mark Jones, Alexandria, VA
Ken Kimball, Clifton, VA
Hussein Maarouf, Fairfax, VA
Alex Marshall, Vinton, VA
David Marshall, Bethesda, MD
John Merold, Oak Hill, VA
Bud Morgan, Vienna, VA
Shirley Prikals, Oak Hill, VA
Peter Schiff, Potomac, MD
Jeffrey Schwartz, Fairfax, VA
Donna Sinrud, The Villages, FL
Howard Stevens, Alexandria, VA
W T Taschek, Haymarket, VA
Thad Uehling, Lothian, MD
Bob Yellen, Washington, DC

September 2015

Linda Ankers, Virginia Beach, VA
Andres Doernberg, Washington, DC
Judy Edgar, Cambridge, MD
Pat Kibler, Falls Church, VA
Gil Krawitz, Potomac Falls, VA
Cheryl Krongard, Pikesville, MD
Michael Kuehl, Bethesda, MD
Rosemary Kuntz, Olney, MD
Stephen Salitrik, Frederick, MD
Dennis Serpico, Ellicott City, MD
Thomas Stagnaro, Riva, MD
Charles Van Gorder
Michael Watts, Lanham, MD

♣ **Baltimore, MD** ♦ **JUNE 10-12, 2016** ♥

The **Maryland Bridge Association**

—presents—

**Baltimore's
Summer Sectional**

at the
COMFORT INN - BWI AIRPORT

6921 Baltimore-Annapolis Blvd., Baltimore, MD 21225 ☆ **410-789-9100**

Our Schedule! ☆☆☆

Including free coffee, soft drinks and refreshments and a Lecture with Game Analysis after the Saturday Morning Game! For the Sunday Swiss, sandwiches are available for purchase (partially subsidized by Maryland Bridge Assn.)

—All pair events are single session—

FRIDAY, June 10

Stratified Grass Roots Pairs (0-1500/3000/3000+ MPs)1 pm
(The entry fee for this game is \$1 additional. 40% more masterpoints awarded!
Helps fund the GNTs and NAPS)

I/N Stratified Pairs (0-200/500/1000 MPs)1 pm

Triple Nickel Swiss: (5 rounds, 5 boards, 5 minutes a board)7 pm

SATURDAY, June 11—2 single session events ☆

Stratified Pairs (0-1500/3000/3000+ MPs)10 am & 3 pm

I/N Stratified Pairs (0-200/500/1000 MPs)10 am & 3 pm

SUNDAY, June 12

Stratified Swiss Teams Stratified by average of total MPs10 am - Playthru

I/N Swiss Teams (0-5/20/50 and 100/200/500) 2 single session events10 am & 2 pm

DIRECTIONS from North and South: take Baltimore-Washington Parkway (MD Route 295) to Baltimore Beltway East (I-695 toward Glen Burnie). Take the Northbound Camp Meade Road Exit #6A and continue north for two miles. You can see the Comfort Inn at the next traffic light.

☆☆☆
Tournament Chair

Renate Conlon, 443-527-4744, rjconlon@hotmail.com

☆☆☆
Partnerships

Pat Murty, 410-323-6206,
129firef@comcast.net

☆☆☆
Silver Points!



SPACIOUS PLAYING AREA – AMPLE PARKING – FAMOUS HOSPITALITY

*Separate Friendly Bridge 0-300 games on both
Friday and Saturday*

Clarion Hotel Central

3207 North Boulevard, Richmond, VA 23230

Special Bridge Rate: \$59.00

Call 804-359-9441 for reservations

FRIDAY, JUNE 24

Newcomer Lecture 9:30 AM
RBA Friendly Bridge 0-300 game ... 10:30 AM / 3:00 PM
Stratified Open Pairs (750/2000/2000+) 10:30 AM
Stratified Open Pairs (750/2000/2000+) 3:00 PM

SATURDAY, JUNE 25

Newcomer Lecture 9:30 AM
RBA Friendly Bridge 0-300 game 10:30 AM
Stratified Open Pairs (750/2000/2000+) 10:30 AM
Bracketed Pairs/Board-a-Match Teams 3:00 PM
*A, B, and C play in sectional pairs game. At the
same time, each pair is teamed according to MP
(highest to lowest). Two chances to win!!*

SUNDAY, JUNE 26

Free coffee, bagels and donuts at 9:30 AM
Bracketed Swiss Teams 10:30 AM
8 teams in each bracket, seven rounds, play through,
lunch provided

DIRECTIONS: From North and West of Richmond: Take I-95-South to Exit 78/Boulevard, get in left side lane at bottom of exit ramp, turn Left onto N. Boulevard, Hotel is immediately on the right. From South and East of Richmond: Take I-95-North to Exit 78/Boulevard, get in right side lane at bottom of exit ramp, turn Right onto Hermitage Road, Hotel's rear entrance is immediately on the left.



**FAMOUS RICHMOND
HOSPITALITY**

Free coffee, snacks
and soda available
each session

**TOURNAMENT
CHAIRS**

Barry & Winnie Fratkin
fratco@mac.com
804-741-6782 (H)
804-837-6782 (C)

**PARTNERSHIP
CHAIR**

Anne Atwood
bsaintsd@aol.com,
804-784-2654

The Mid-Atlantic Bridge Conference
Home to the ACBL's premier Regionals
— hosting 33,000 tables during this
past year. It's time to check your
2016-17 calendar and plan to play in
the biggest and best tournaments of

.....February, 2016

Feb 5-7 **Baltimore, MD**
Renate Conlon, 443-527-4744, rjconlon@hotmail.com

Feb 8-14 **D6 & Unit 190 StaC**
Don Berman, 301-776-3581, don.berman@verizon.net

Feb 8-14 . . . **Hilton Head, SC D7 REGIONAL**
Ann Grindstaff, (843) 341-6337, AnnKurt52@gmail.com;
Dave McClintock, (843) 705-2704, tsdavem@hotmail.com

● **P 6...Feb 18-21** **Fairfax, VA**
Margot Hennings, 703-560-0245, margot10bridge@cox.net

● **P 3...Feb 29-Mar 6 Williamsburg, VA REGIONAL**
Jane Farthing, 703-850-9635, jane.farthing@gmail.com

.....March, 2016

Mar 10-20 **RENO, NV NATIONALS**
Spring North American Bridge Championships

● **P 7...Mar 11-13** **Charlottesville, VA**
Nan Massie, 434-531-5547, chobridge@aol.com

● **P 8...Mar 18-20** **Fredericksburg, VA**
Deborah Hage, 540-659-1321, debhage@hotmail.com

● **P 2...Mar 28-Apr 4** **D4 REGIONAL
Wilmington, DE**
Bruce and Judy Gwaltney,
302-478-2396, judygwalt@verizon.net

.....April, 2016

● **P 9...Apr 1-3** **Norfolk/Va Beach**
Gail Cervarich, 757-399-1011, gailcervarich@gmail.com

● **P 10...Apr 1-3** **Lynchburg, VA**
Anne Barlow, 434-237-8143, abarlow503@gmail.com

● **P 11...Apr 7-10** **Silver Spring, MD**
Steve Schatzow, 202-332-3729, ssschatzow@his.com

● **P 4...Apr 11-17 Gatlinburg, TN D7 REGIONAL**
Pete and Julia Misslin, 423-884-3550, pmislin@tds.net

Apr 30-May 1 . . . **Flights B, C and Open GNT**
1st weekend

the year. Mid-Atlantic regionals offer loads of Bracketed Knockouts, exciting Intermediate/Newcomer schedules and

1 Year **DISTRICT 6** **Calendar** **OF EVENTS**

lectures, and our three favorite words: hospitality, hospitality, hospitality.

.....May, 2016

May 2-8 **D6 and U190 StAc**
 Don Berman, 301-776-3581, don.berman@verizon.net

P 12....May 12-15 **Fairfax, VA**
 Margot Hennings, 703-560-0245,
 margot10bridge@cox.net

P 13....May 19-21 **Cambridge, MD**
 Albanus Phillips, 443-521-1509, albanus_phillips@yahoo.com
 & Phil Feldman, 443-521-1509, pfeldman@sequreu.com

P 14....May 20-22 **Williamsburg, VA**
 Jane Farthing, 703-850-9635,
 jane.farthing@gmail.com

P 15....May 20-22 **Front Royal, VA**
 Gerry O'Malley, 540-550-4410,
 gerrysdeals@gmail.com

May 21-22 **Flights B, C and Open GNT**
 2nd weekend

May 24-30 **Raleigh, NC D7 REGIONAL**
 Audrey and Lance Shull, 919-280-5447, 919-531-5535,
 Audrey.shull@sas.com, Lance.Shull@gmail.com

.....June, 2016

P 16....Jun 3-5 **Blacksburg, VA**
 Rich Rio, 540-553-6228, richrio428@yahoo.com

P 17....Jun 3-5 **Norfolk/Va Beach**
 William Mannschreck, 757-340-0885, 757-647-1545(m),
 wmannschre@aol.com

P 18....Jun 4-5 **Kensington, MD NLM**
 Leslie Shafer & Julie Marquette, 301-642-9197,
 jmarq3428@yahoo.com

P 19....Jun 10-12 **Baltimore, MD**
 Renate Conlon, 443-527-4744, rjconlon@hotmail.com

Jun 13-19 . . . **NABC Promotional FUND Week**

P 20....Jun 24-26 **Richmond, VA**
 Barry and Winnie Fratkin, 804-741-6782 (H) ,
 804-837-6782 (C), fratco@mac.com

.....June, continued...

Jun 20-26 **D4 REGIONAL**
King of Prussia, PA
 Meyer Kotkin,
 215-891-0602, mhk22@cornell.edu

.....July, 2016

Jul 7-10 **Silver Spring, MD**
 Steve Schatzow, 202-332-3729, sschatzow@his.com

Jul 8-10 **Charlottesville, VA**
 Betsy Ruehl, 540-942-3667, etruehl@ntelos.net

Jul 11-17 . . **Chattanooga, TN D7 REGIONAL**
 Bert Shramko, 423-961-4123, bshramko@comcast.net

Jul 21-31 . . . **WASHINGTON, DC NATIONALS**
 Summer North American Bridge Championships

.....August, 2016

Aug 15-21 **Hunt Valley, MD REGIONAL**
 Diane Jaworowsky, 410-461-2083, DianeJaw@verizon.net

Aug. 27-28 **Norfolk/VA Beach NLM**
 Kathy Haglich , 757-467-4136, kathyvsh@gmail.com

Aug 30-Sep5 . . **Atlanta, GA D7 REGIONAL**
 Jack Feagin, 404-252-9246, jfeagin2@bellsouth.net

.....September, 2016

Sep 8-11 **Fairfax, VA**
 Margot Hennings, 703-560-0245,
 margot10bridge@cox.net

Sep 16-18 **Norfolk/Va Beach**
 Jennifer Christman, 757-574-7118, jchristman8@cox.net
 & Lynnette Regan, 757-627-6061 , LHRegan@yahoo.com

Sep 24-25 **D6 NAP Finals**
 Barb Doran, 301-608-0347, barb.doran@verizon.net

Sep 30-Oct 2 **Williamsburg, VA**
 Jane Farthing, 703-850-9635, jane.farthing@gmail.com

Sep 30-Oct 2 **Baltimore, MD**
 Renate Conlon, 443-527-4744, rjconlon@hotmail.com

.....October, 2016

Oct 6-9 **Silver Spring, MD**
 Steve Schatzow, 202-332-3729, sschatzow@his.com

Oct 14-16 **Richmond, VA**
 Barry and Winnie Fratkin, 804-741-6782 (H) ,
 804-837-6782 (C), fratco@mac.com

Oct. 20-23 **Fairfax, VA**
 Margot Hennings, 703-560-0245, margot10bridge@cox.net

Oct 24-30 . . . **Charlotte, NC D7 REGIONAL**
 Arnold Hoffman, 704-875-6923,
 ajhoffmann@carolina.rr.com

Oct 31-Nov 6 **D4 REGIONAL**
Manheim, PA
 John Klingler,
 dhklingler@epix.net (Lancaster County)

.....November, 2016

Nov 7-13 **D6 & Unit 190 StAc**
 Don Berman, 301-776-3581, don.berman@verizon.net

Nov 9-15 . . **Norfolk/Va Beach, VA REGIONAL**
 Brian Boyce, brian@bfboyce.com

Nov 24-Dec 4 . . **ORLANDO, FL NATIONALS**
 Fall North American Bridge Championships

.....December, 2016

Dec 9-11 **Charlottesville, VA**
 Betsy Ruehl, 540-942-3667, etruehl@ntelos.net

Dec 12-18 **D6 & Unit 190 StAc**
 Don Berman, 301-776-3581, don.berman@verizon.net

Dec 27-Jan 2 **N Charleston, SC D7 REGIONAL**
 Steven Donaldson, 843-412-8097, folliboy@aol.com

.....January, 2017

Jan 23-29 . . **Wilmington, NC D7 REGIONAL**
 Larry Harding,
 Larry.Harding57@gmail.com



Grand National Teams 2015-16—Get Your Open, B or C Team Together!

District 6 will be holding the first weekend/semi-finals of the GNT Flights B and C at one northern and one southern site on April 30 and May 1 for Flight B, and on April 30 for Flight C. The first weekend of the Open GNT competition will be on April 30 and May 1 at the White Oak Community Center in Silver Spring. Cost per team is \$100. This entry fee pays for the first day (2 sessions). Money should be sent to: Lynn Jones, 10 Tenby Court, Timonium, MD 21093. Make checks payable to District 6. Please include each player's name and ACBL number and provide a contact e-mail address for the Team Captain.

You must pre-register to play. Pre-registration ends Midnight on the Thursday, nine days before the event.

Any questions, please contact Lynn Jones at 410-560-3244 or bridgelynn@comcast.net. You can find Conditions of Contest, directions to sites, & where to qualify at www.districtsix.org

Open Bracket

First Weekend: White Oak Community Center
Saturday, April 30, 12 Noon
Sunday, May 1, 11 A.M.

Second Weekend: Sites TBA
Saturday, May 21, 12 Noon
Sunday, May 22, 11 A.M. ... Finals

B Bracket (0-2500 MP)

First Weekend: Northern Site:
White Oak Community Center
Saturday, April 30, 12 Noon
Sunday, May 1, 11 A.M.

First Weekend: Southern Site
Charlottesville, Cavalier Inn
Saturday, April 30, 12 Noon
Sunday, May 1, 11 AM

Second Weekend: For all qualified teams
Sites TBA
Saturday, May 21, 12 Noon
Sunday, May 22, 11 A.M. ... Finals

C Bracket (0-500 MP)

First Weekend: Northern Site
Saturday, April 30, 12 Noon
White Oak Community Center

First Weekend: Southern Site
Saturday, April 30, 12 noon
Charlottesville, Cavalier Inn

Second Weekend: For all qualified teams
Sunday, May 22, 11 A.M.
Site TBA ... Finals